

106B Skirt

Burda sizes 36, 38, 40, 42, 44

Skirt length from waist: 66 cm (26 ins)

Upper skirt edge sits 6 cm (2 3/8 ins) above waist

Materials

Fine crosswise stretch gabardine,
width: 150 cm (59 ins)
length: 2.00 m (2 1/4 yds) for all sizes.

Interfacing.

8 flat inside buttons.

Recommended fabrics: Skirt fabrics with some body, with or without elastane.

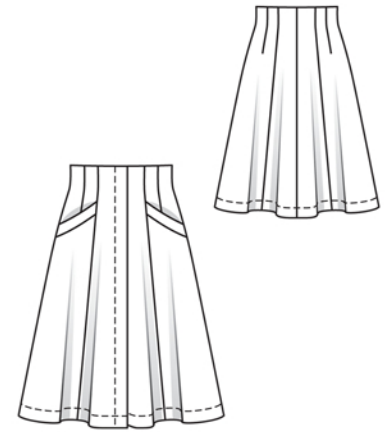
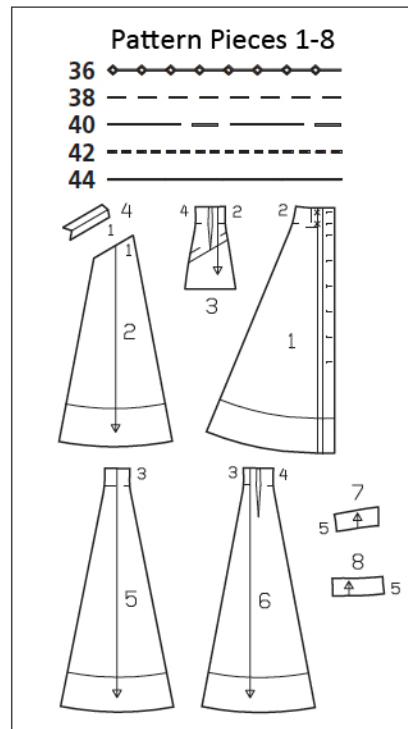
Preparations

Print the pattern out on letter or A4 sized paper. It is **very** important to not scale the document. Your pattern will print on multiple pages, which you will then tile together. Arrange the sheets on a large, hard and flat surface matching up the numbers and letters (i.e. 6A to 6A). Cut or fold one of the sides and match the edge to its corresponding side. Then, tape down in place so paper is secure.

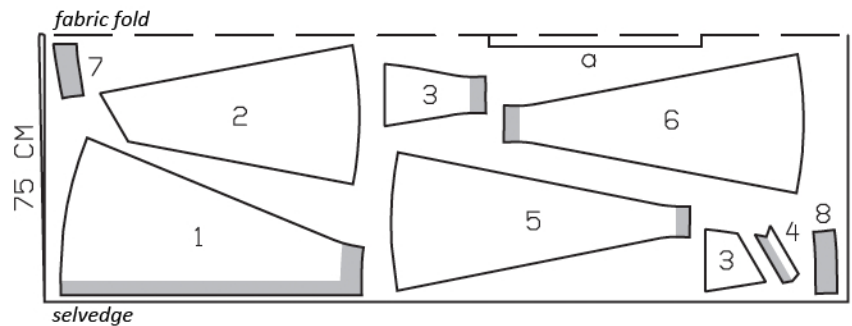
Trace the pattern pieces from the pattern sheet following the lines and markings for style 106B and your size. Trace the pocket piece from piece 3 as a separate pattern piece.

burda style magazine patterns do not have seam allowance included.

Seam and hem allowance to be added:
Seams and edges 1.5 cm (5/8 in), hem 4 cm (1 5/8 ins).



Cut from a double layer of fabric, right side facing in.



Cutting Out

- 1 centre front skirt panel 2x
- 2 side front skirt panel 2x
- 3 side hip yoke with integrated pocket piece 2x
- pocket piece 2x
- 4 welt 2x
- 5 centre back skirt panel 2x
- 6 side back skirt panel 2x
- 7 front facing 2x
- 8 back facing 2x

Draft the following piece NOT included in the pattern:

- a) backing strip for concealed fastening, 60 cm (23 3/4 ins) long, 5.5 cm (2 1/4 ins) wide (incl. allowances).

Interfacing: See shaded area on pattern layout. Iron interfacing, 5 cm (2 ins) wide, to wrong side of upper edges of skirt panels.

Sewing

Stitch darts. Press toward centre.

Fold welts lengthwise, with right side facing out, and press. Baste open long edges of each welt together to upper edge of side front skirt panel (seam number 1). Stitch pocket pieces to upper skirt panel edges, over welts. Turn pocket pieces to inside. Turn welts up and press. Pin welts to side hip yokes, at abutting lines. Stitch lower pocket edges together. Baste ends of welts in place. Baste pocket edges to wrong side of side skirt panels.

Stitch centre back seam, front and back section seams, and side seams. Press seam allowances open.

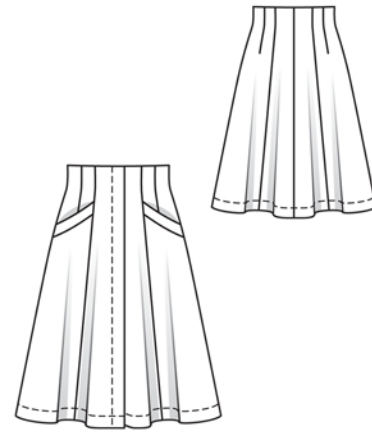
Press hem allowance to inside and stitch 2 cm (3/4 in) from lower edge.

Work buttonholes in right facing. Lay backing strips on inside of right front facing, beginning at upper skirt edge (right side facing wrong side). Stitch backing strip next to facing fold line and to inside facing edge. Neaten inside facing edges.

On front edges, turn self-facings to outside and pin to upper edge. On facing for upper skirt edge, stitch centre back seam and side seams. Pin facing right sides together with upper skirt edge – front facing ends lie over self-facings. Stitch along upper skirt edge. Turn upper facing up and stitch to seam allowances, close to seam. Turn facings to inside. Press front and upper edges. Sew self-facings to upper facing and to hem edge. Sew lower facing edge to seams.

Topstitch front skirt edges as marked.

Stitch hem in place, 3 cm (1 1/4 ins) from edge.



Additional Information:

Burda patterns do not include seam and hem allowances. We recommend adding 1-2 cm (3/8 - 3/4 inch) for seams and 2-5 cm (3/4 - 2 inch/es) for hems. Refer to your specific pattern instructions for exact measurements.

The fabric requirements are based on the fabric used for the original designs. These amounts will change if you use fabric of a different width. The pattern of the fabric determines whether all the pieces must be cut in the same direction or whether some can be reversed to save fabric.

The cutting layout printed with the instructions shows the best way to place the pattern pieces on our original fabric. Fold the fabric double with the right side facing in. The fabric then has a fold edge and a selvedge edge. When cutting from a single fabric layer, the right side should face up.

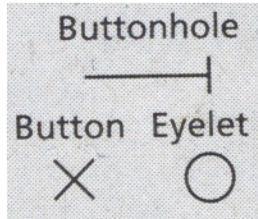
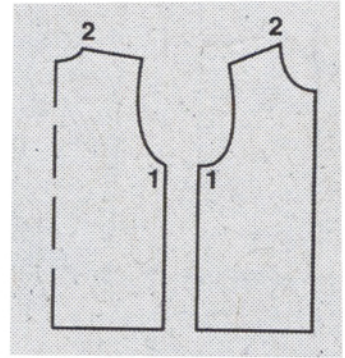
Pattern pieces which are shown in the cutting layout with broken outlines should be pinned to the fabric with their printed side facing down.

Grey shaded areas in the cutting layout indicate which pieces are to be interfaced.

Transfer the pattern piece lines to the wrong side of your fabric with burda dressmaker's carbon paper. Hand-baste along lines (e.g. for pockets or centre front) to make them visible on the right side of the fabric.

Key Symbols:

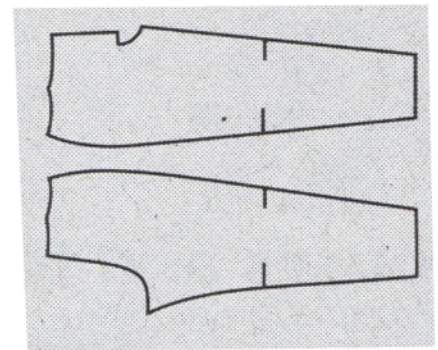
Seam numbers
show where pattern pieces must be sewn together. Match pieces with the same numbers.



Seam marks
on long seams. Match the small symbols to one another.



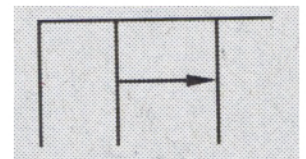
Presser foot
is the symbol for seam and top-stitching lines.



Scissors
indicate edges to be cut without seam allowances and also slash lines, e.g. pocket openings.



Pleat symbol
Fold pleat in direction of arrow.



Placket/slit mark
Indicates beginning/end of placket/slit.

