

118 Skirt

Burda sizes 34, 36, 38, 40, 42

Length from waist 40 cm (15 3/4 ins)

Materials

Fine gabardine with crosswise stretch, width: 150 cm (59 ins)
length: 1.00 m (1 1/8 yds) for all sizes.

Interfacing.

1 zip, 12 cm (5 ins) long.

2 flat inside buttons.

Recommended fabrics: Lightweight skirt fabrics with some body, with or without elastane.

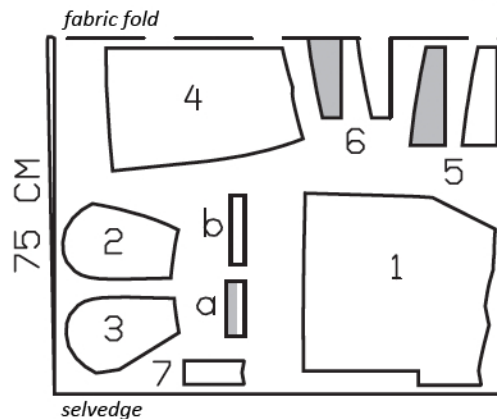
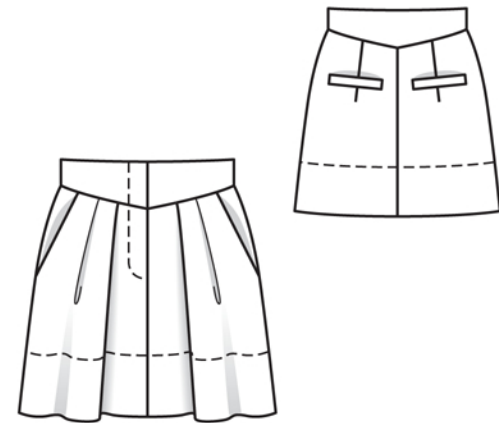
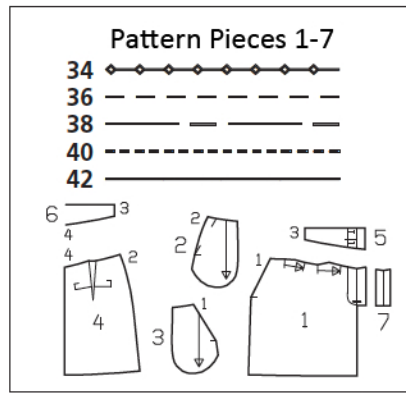
Preparations

Print the pattern out on letter or A4 sized paper. It is **very important** to not scale the document. Your pattern will print on multiple pages, which you will then tile together. Arrange the sheets on a large, hard and flat surface matching up the numbers and letters (i.e. 6A to 6A). Cut or fold one of the sides and match the edge to its corresponding side. Then, tape down in place so paper is secure.

Trace the pattern pieces from the pattern sheet following the lines and markings for style 118 and your size. The stitching line at the zip slit is marked for size 34. For sizes 36 – 42, mark the stitching line the same distance from centre front as for size 34.

burda style magazine patterns do not have seam allowance included.

Seam and hem allowance to be added:
Seams and edges 1.5 cm (5/8 in), hem 10 cm (4 ins).



Cut from a double layer of fabric, right side facing in.

Cutting Out

- 1 front skirt panel 2x
- 2 side hip yoke with integrated pocket piece 2x
- 3 pocket piece 2x
- 4 back skirt panel 2x
- 5 front waistband 4x
- 6 back waistband, on a fold 2x
- 7 left underlap 1x

Draft the following pieces NOT included in the pattern:

- a) 2 welts, 11.5 cm (4 1/2 ins) long, 4 cm (1 1/2 ins) wide, finished width 2 cm (3/4 in),
- b) 2 backing strips for welt joining seams, 15 cm (6 ins) long, 3 cm (1 1/4 ins) wide (incl. allowances).

Interfacing: See shaded area on pattern layout. Interface outer waistband pieces.

Sewing

Stitch centre seam on back skirt panels, beginning exactly at seam line on upper edge. Press seam allowances open. Stitch back darts and press toward centre.

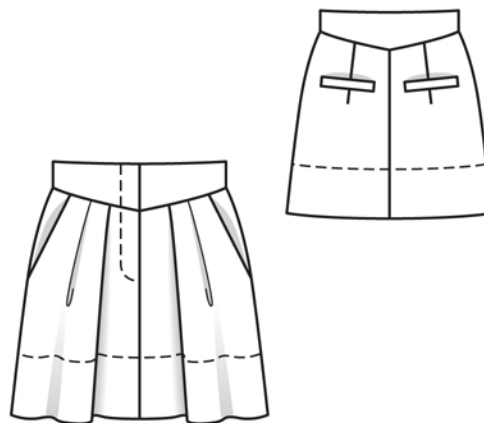
Fold welts lengthwise, with right side facing in, and stitch across ends. Turn welts right side out. Trim allowances on joining edges to 7 mm (1/4 in) wide. Stitch welts right sides together with skirt back, along marked joining line, catching backing strips on inside. Turn welts up and press backing strips down. Sew narrow edges of welts in place by hand.

Stitch centre front seam, leaving slit open for zip. Press seam allowances onto right skirt panel. Fold pleats in direction of arrows and baste.

Hip yoke pockets: Stitch pocket pieces right sides together with pocket opening edges of front skirt panels. Turn pocket pieces up and stitch to seam allowances, close to seam. Turn pocket pieces to inside. Pin pocket opening edges to side hip yokes at abutting lines. Stitch edges of pocket pieces together. Baste pockets to wrong side of skirt front.

Zip slit: Press self-facings on slit edges to inside. Stitch along centre front on the right and stitch 5 mm (3/16 in) before centre front on the left. Stitch zip under left slit edge (underlap), stitching close to teeth of zip. Pin slit closed, matching centres. Stitch loose zip tape to right facing, not catching skirt piece. Baste facing in place. Topstitch slit from upper edge to 3 cm (1 1/4 ins) before the end, as marked. Fold underlap piece lengthwise, right side facing in. Stitch across bottom end. Turn right side out. Lay underlap under left slit edge and pin to facing. Stitch facing to underlap, close to zip joining seam. Lay opening closed again and topstitch to the end, thereby catching the underlap.

Stitch side seams.



Stitch side seams on inner and outer waistband units. Stitch outer waistband to upper skirt edge, leaving right waistband end extending from centre front. Stitch left waistband end to underlap of slit. Press seam allowances of joining seam onto waistband. Lay inside waistband unit right sides together with attached outer waistband unit. Stitch upper edges together. Turn inside waistband up. Press seam allowances open. Trim right front waistband end to 1.5 cm (5/8 in) before centre front. Work buttonholes in inside right front waistband piece. Turn inside waistband to outside and stitch across ends. Turn waistband right side out. Turn edge of inside waistband under and baste in place, approx. 4 cm (1 1/2 ins) long, then lay remaining edge flat over joining seam, not turned under. Topstitch waistband close to all edges. Topstitch right front waistband edge as continuation of zip stitching line, as marked.

Press hem allowance to inside and baste. Topstitch 9 cm (3 3/4 ins) from lower edge.

Additional Information:

Burda patterns do not include seam and hem allowances. We recommend adding 1-2 cm (3/8 - 3/4 inch) for seams and 2-5 cm (3/4 - 2 inch/es) for hems. Refer to your specific pattern instructions for exact measurements.

The fabric requirements are based on the fabric used for the original designs. These amounts will change if you use fabric of a different width. The pattern of the fabric determines whether all the pieces must be cut in the same direction or whether some can be reversed to save fabric.

The cutting layout printed with the instructions shows the best way to place the pattern pieces on our original fabric. Fold the fabric double with the right side facing in. The fabric then has a fold edge and a selvedge edge. When cutting from a single fabric layer, the right side should face up.

Pattern pieces which are shown in the cutting layout with broken outlines should be pinned to the fabric with their printed side facing down.

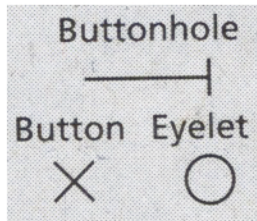
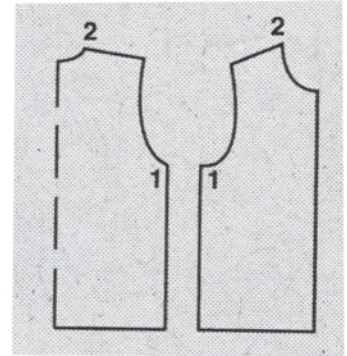
Grey shaded areas in the cutting layout indicate which pieces are to be interfaced.

Transfer the pattern piece lines to the wrong side of your fabric with burda dressmaker's carbon paper. Hand-baste along lines (e.g. for pockets or centre front) to make them visible on the right side of the fabric.

Key Symbols:

Seam numbers

show where pattern pieces must be sewn together. Match pieces with the same numbers.

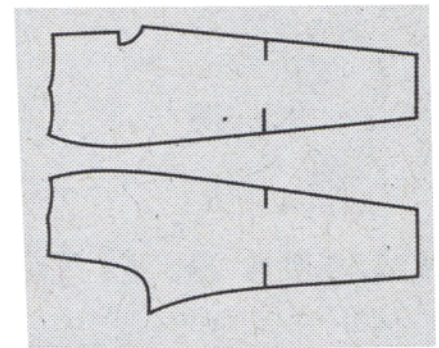


Seam marks

on long seams. Match the small symbols to one another.



Presser foot is the symbol for seam and top-stitching lines.



Scissors

indicate edges to be cut with-out seam allowances and alsoslash lines, e. g. pocket openings.



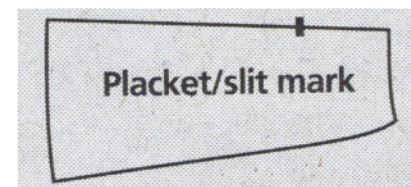
Pleat symbol

Fold pleat in direction of arrow.



Placket/slit mark

Indicates beginning/ end of placket/slit.



Gather
Ease
Stretch

