

122A Trousers

Burda sizes 36, 38, 40, 42, 44

Side length 114 cm (45 ins)

Upper edge of trousers sits 4 cm (1 5/8 ins) above waist at centre back and 2.5 cm (1 in) above waist at centre front

Hem circumference 58 cm (23 ins)

Materials

Twill,
width: 140 cm (55 ins)
length: 1.80 – 2.25 – 2.25 – 2.30 – 2.30 m
(2 – 2 5/8 – 2 5/8 – 2 5/8 – 2 5/8 yds).

A piece of lining fabric, approx. 30 x 35 cm (12 x 14 ins), for pocket pieces.

Interfacing.

1 invisible zip, 22 cm (9 ins) long.

1 button.

Recommended fabrics: Softly draping trouser fabrics.

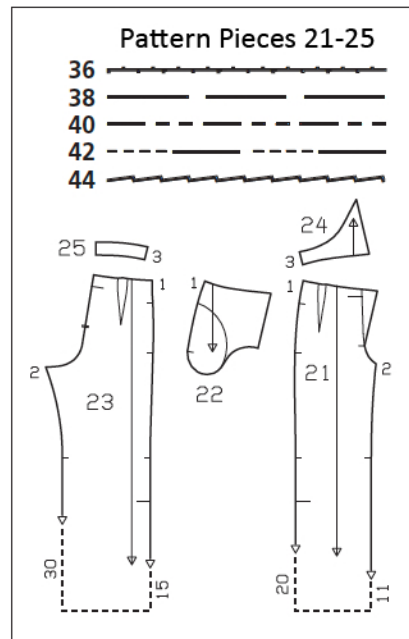
Preparations

Print the pattern out on letter or A4 sized paper. It is very important to not scale the document. Your pattern will print on multiple pages, which you will then tile together. Arrange the sheets on a large, hard and flat surface matching up the numbers and letters (i.e. 6A to 6A). Cut or fold one of the sides and match the edge to its corresponding side. Then, tape down in place so paper is secure.

Trace the pattern pieces from the pattern sheet following the lines and markings for style 122A and your size. Trace the small pocket piece from piece 22 as a separate pattern piece.

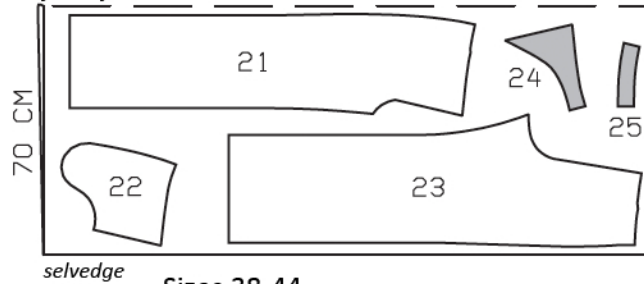
burda style magazine patterns do not have seam allowance included.

Seam and hem allowance to be added:
Seams and edges 1.5 cm (5/8 in), hem 7 cm (2 3/4 ins).



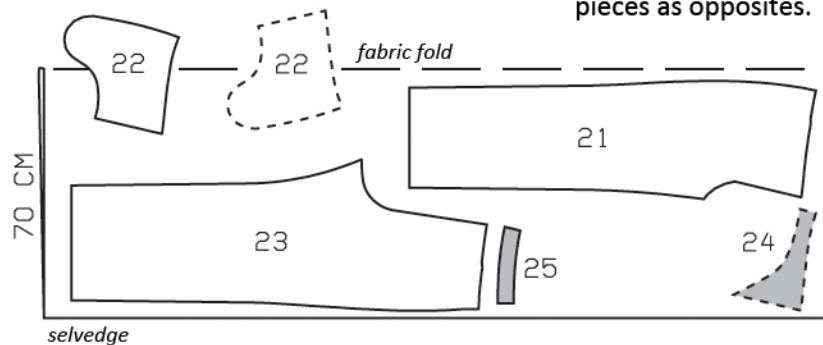
Size 36

fabric fold



selvedge

Sizes 38-44



selvedge

Cut from a double layer of fabric, right side facing in. The pieces shown extending over the fabric fold should be cut last from a single layer of fabric. Cut right and left pieces as opposites.

Cutting Out

Main fabric:

- 21 front trouser piece 2x
- 22 large pocket piece 2x
- 23 back trouser piece 2x
- 24 front facing 2x
- 25 back facing 2x

Lining:

- 22 small pocket piece 2x

Interfacing: See shaded area on pattern layout.

Sewing

Stitch darts in front and back trouser pieces and press toward centre. Stitch side seams, not stitching across pocket openings.

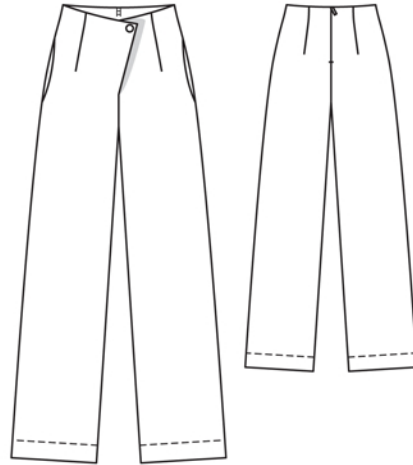
Inseam pockets: Pin pocket pieces right sides together with seam allowances of pocket opening edges – small pocket piece in front, large pocket piece in back. Stitch pieces in place along seam line at pocket opening edges and close to side seams above pocket openings. Press pocket pieces forward and stitch together. Baste pocket pieces to wrong side of trouser fronts.

Stitch inside leg seams. Press seam allowances open.

Sew invisible zip to back slit edges, see “Helpful Hint” on next page.

Upper and front edges, centre seam: Stitch side seams of facings. Lay facings right sides together with shorts and pin to upper and front edges. At zip slit, turn facing ends back, approx. 5 mm (3/16 in) before edge of slit, and pin to upper edge. At edges of back slit, turn allowances to outside and pin to upper edge, over facing. Stitch along upper edge and each slanted front edge, to marking. Trim seam allowances, trimming corners diagonally. Turn lower edge of front facings back at seam ends and pin. Pull one leg into the other, with right sides facing. Stitch centre front seam below seam mark and stitch centre back seam to zip. Remove pins. Turn back slit allowances and facings to inside. Sew facings to zip tapes and to seams.

Press hem allowances to inside and turn edges under. Stitch 6 cm (2 3/8 ins) from lower edge.





These special zippers come in various lengths. The zipper should be at least 2 cm (3/4 in) longer than the slit. It is sewn in place before the seam below the slit is stitched. A special presser foot is required to sew the zipper in place.

Sewing the zipper in place:

Open the zipper and push the coil back with your thumbnail to reveal the seam marking between the tape and the coil. Place the open zipper right side down on the right fabric side of one slit edge.

In order to stitch the zipper in place exactly along the marked seam line, you must first calculate the distance between the tape edge and the fabric edge as follows: width of seam allowance minus 1 cm (3/8 in) tape width = distance from edge of fabric. This will yield a value of 5 mm (3/16 in) if the width of the seam allowance is 1.5 cm (5/8 in).

Pin the top end of the zipper tape in place, the calculated distance from the edge of the fabric. The bottom end of the zipper will extend past the marked end of the slit. Place the presser foot on the zipper so that the coil is in the notch to the right of the needle (1). Stitch zipper in place, from the top to the marked end of the slit. Close zipper.

Place the other zipper tape face down on the opposite slit edge and pin in place at the top. Open zipper again. Place the presser foot on the top end of the zipper so that the coil is in the notch to the left of the needle (2). Sew the zipper in place, from the top to the end of the slit. Close zipper.

Now stitch the seam below the zipper, from bottom to top. Turn the loose lower end of the zipper out of the way, over the seam allowance. Stitch as close as possible to the last stitches of the zipper seams. Trim away excess zipper and bind the end with a scrap of fabric.

Additional Information:

Burda patterns do not include seam and hem allowances. We recommend adding 1-2 cm (3/8 - 3/4 inch) for seams and 2-5 cm (3/4 - 2 inch/es) for hems. Refer to your specific pattern instructions for exact measurements.

The fabric requirements are based on the fabric used for the original designs. These amounts will change if you use fabric of a different width. The pattern of the fabric determines whether all the pieces must be cut in the same direction or whether some can be reversed to save fabric.

The cutting layout printed with the instructions shows the best way to place the pattern pieces on our original fabric. Fold the fabric double with the right side facing in. The fabric then has a fold edge and a selvedge edge. When cutting from a single fabric layer, the right side should face up.

Pattern pieces which are shown in the cutting layout with broken outlines should be pinned to the fabric with their printed side facing down.

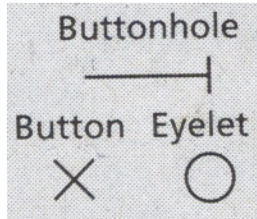
Grey shaded areas in the cutting layout indicate which pieces are to be interfaced.

Transfer the pattern piece lines to the wrong side of your fabric with burda dressmaker's carbon paper. Hand-baste along lines (e.g. for pockets or centre front) to make them visible on the right side of the fabric.

Key Symbols:

Seam numbers

show where pattern pieces must be sewn together. Match pieces with the same numbers.



Seam marks

on long seams. Match the small symbols to one another.



Presser foot is the symbol for seam and top-stitching lines.



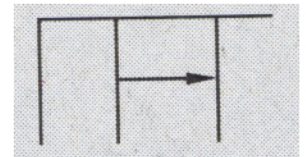
Scissors

indicate edges to be cut without seam allowances and also slash lines, e.g. pocket openings.



Pleat symbol

Fold pleat in direction of arrow.



Placket/slit mark

Indicates beginning/end of placket/slit.



Gather
Ease
Stretch

