

Sewing**Shoulder seams:**

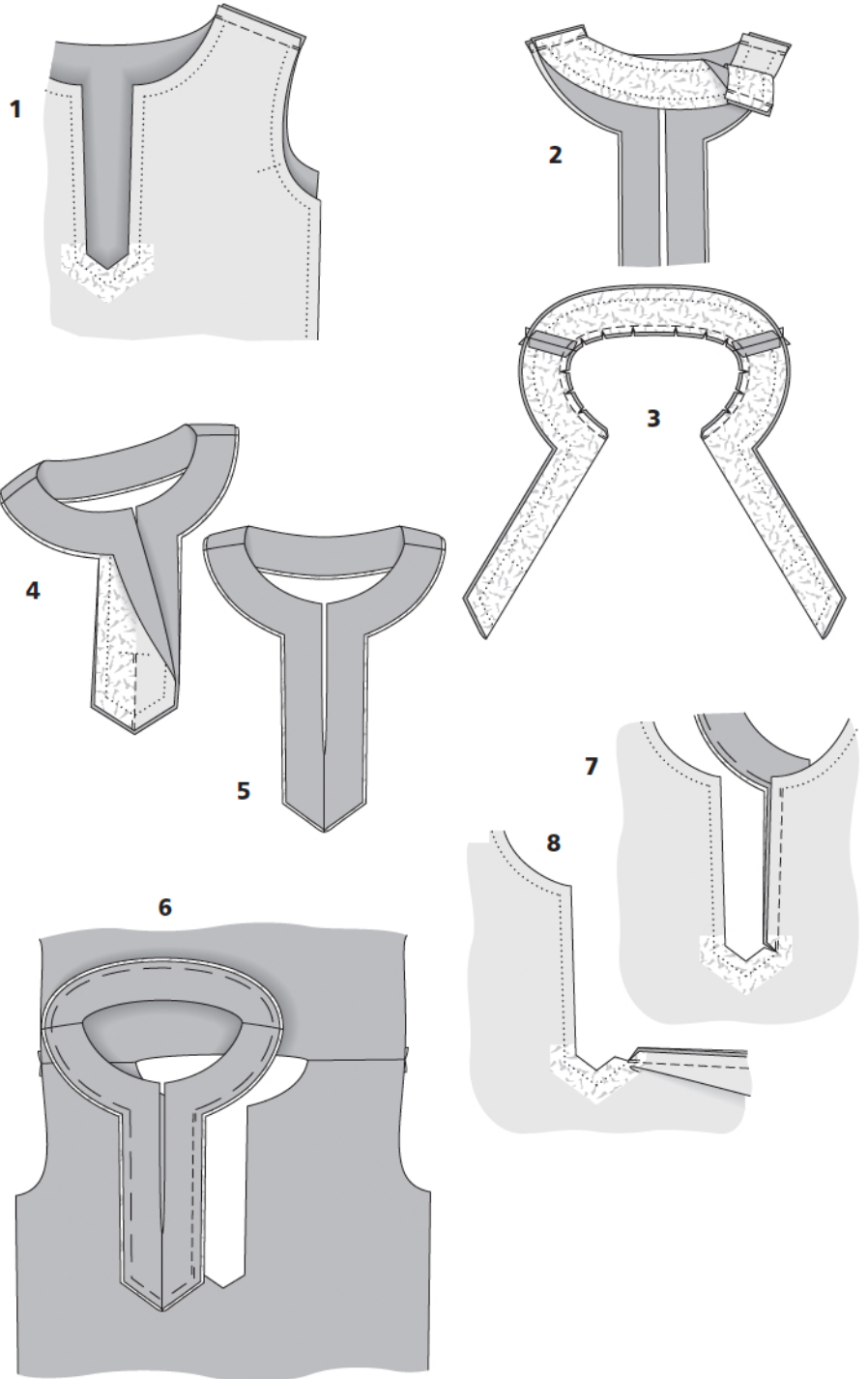
Lay front right sides together with back. Pin shoulder seams. Stitch (image 1). Press seam allowances open and neaten edges of allowances.

Front and back bands:

Fold the front band at the front edge (fabric fold edge), wrong side facing in. Press. Pin shoulder edge of each interfaced back band to shoulder edge of interfaced front band halves, right sides facing. Also pin the shoulder edges of band pieces with no interfacing together. Stitch (image 2). Press the seam allowances open. Fold the front band pieces each at the front edge (fabric fold), right side facing in. Pin the neck edges together and pin the neck edges of the back bands together, matching the shoulder seams and matching the seam lines. Stitch. Trim the seam allowances, trimming the corners diagonally. Clip the curves (image 3). Turn band right side out. Press edges. Unfold lower band ends again. Lay these ends together, right sides facing, and pin together from point to seam mark, exactly along the pressed fold. Stitch as pinned (image 4). Turn the band ends wrong sides facing again. Baste the open band edges together all around (image 5).

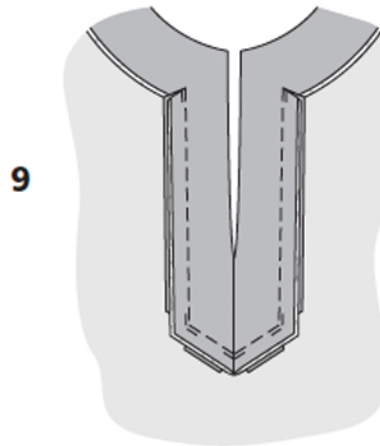
Set in band:

Pin one long straight band edge to corresponding band joining edge of front, from top corner to bottom corner – interfaced band faces down. Stitch exactly from corner to corner. Backstitch to secure start and end of seam (image 6). Clip the seam allowance of the front at lower band end, close to last stitch (image 7). Turn the band forward. Pin the angled lower edge of front to the band, from corner to point (centre front). Stitch. Clip the seam allowance of front at centre front, close to last stitch (image 8).



Sewing

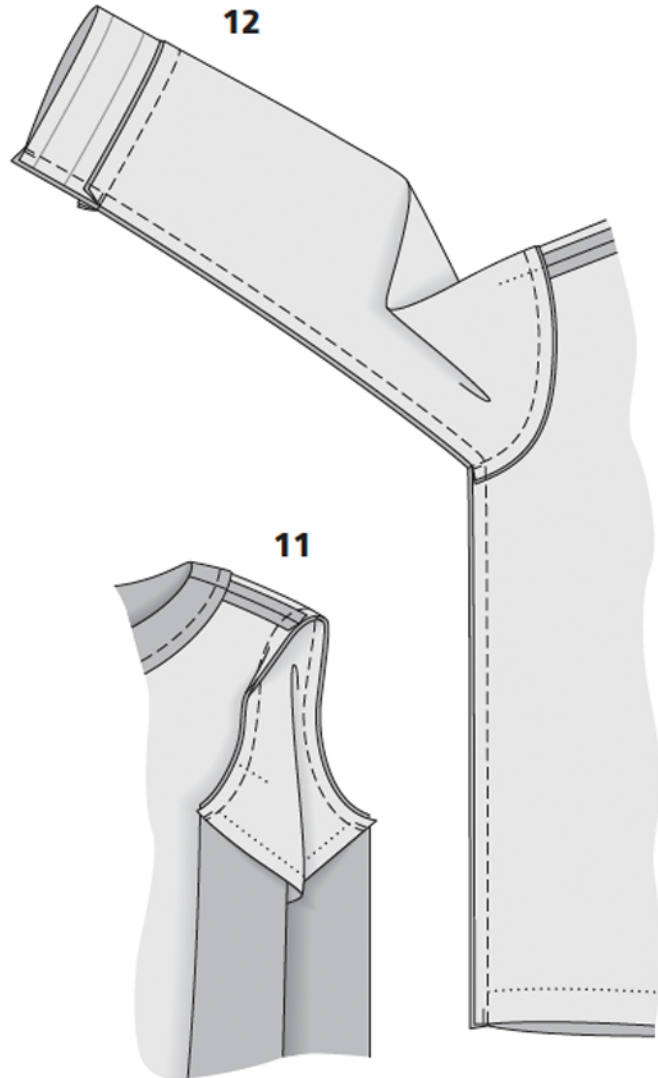
Pin the other angled edge of the front to the other band half, from point to corner. Stitch. Clip the seam allowance of the front. Stitch the front to the band, between bottom corner and top corner. Turn allowances of band joining seams away from band. On the band, clip the seam allowance into the upper corner of each inset seam, close to last stitch (image 9). Then pin the band right sides together with the neck edge, matching the shoulder seams. Stitch. Neaten the seam allowances of the band joining seams together and press away from band.

**Sleeve bands**

Fold the bands in half, wrong side facing in. Press the fold edge. Unfold the bands again and pin to the lower sleeve edges, right sides facing. Stitch. Press the seam allowances onto the bands. Press the allowances on the opposite long band edges to wrong side (image 10).

Attach sleeves:

Pin the sleeves right sides together with the armhole edges, matching markings 4 and matching seam lines. Match the seam mark at shoulder cap to the shoulder seam. Stitch (image 11). Neaten the seam allowances together and press away from sleeves.

**Side seams and sleeve seams:**

Lay the front on the back, right sides facing, folding the sleeves in half. Pin the side seams, sleeve seams, and band seams as continuous seams, turning allowances of bands down flat again to do so. Match the sleeve and seams and match band joining seams. Stitch (image 12). Press the seam allowances open and neaten edges.

Fold the sleeve bands in half again, turn in inside band edges, and pin over joining seam. Work from right side of sleeve to topstitch bands close to edges, catching the inside half.

Hem:

Press the hem allowance to the inside, turn raw edge so that hem is 3.5 cm (1 1/2 ins) wide, and edgestitch hem in place.

Additional Information:

Burda patterns do not include seam and hem allowances. We recommend adding 1-2 cm (3/8 - 3/4 inch) for seams and 2-5 cm (3/4 - 2 inch/es) for hems. Refer to your specific pattern instructions for exact measurements.

The fabric requirements are based on the fabric used for the original designs. These amounts will change if you use fabric of a different width. The pattern of the fabric determines whether all the pieces must be cut in the same direction or whether some can be reversed to save fabric.

The cutting layout printed with the instructions shows the best way to place the pattern pieces on our original fabric. Fold the fabric double with the right side facing in. The fabric then has a fold edge and a selvedge edge. When cutting from a single fabric layer, the right side should face up.

Pattern pieces which are shown in the cutting layout with broken outlines should be pinned to the fabric with their printed side facing down.

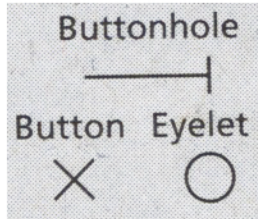
Grey shaded areas in the cutting layout indicate which pieces are to be interfaced.

Transfer the pattern piece lines to the wrong side of your fabric with burda dressmaker's carbon paper. Hand-baste along lines (e.g. for pockets or centre front) to make them visible on the right side of the fabric.

Key Symbols:

Seam numbers

show where pattern pieces must be sewn together. Match pieces with the same numbers.



Seam marks

on long seams. Match the small symbols to one another.



Presser foot is the symbol for seam and top-stitching lines.



Scissors

indicate edges to be cut without seam allowances and also slash lines, e.g. pocket openings.



Pleat symbol

Fold pleat in direction of arrow.



Placket/slit mark

Indicates beginning/end of placket/slit.



Gather
Ease
Stretch

