

### 101 Coat

Burda sizes 38, 40, 42, 44, 46

Back length about 98 cm (39 ins)

### Materials

Plaid mohair fabric,  
width: 140 cm (55 in)  
length: 2.15 m (2 1/2 yds) for all sizes,  
with a plaid repeat of 23 cm (9 1/8 ins).

Loden cloth with sequin embroidery,  
width: 140 cm (55 in)  
length: 0.85 m (1 yd).

Lining,  
width: 140 cm (55 in)  
length: 1.75 m (2 yds).

Interfacing.

Vilene Bias Tape/ stay tape.

3 buttons.

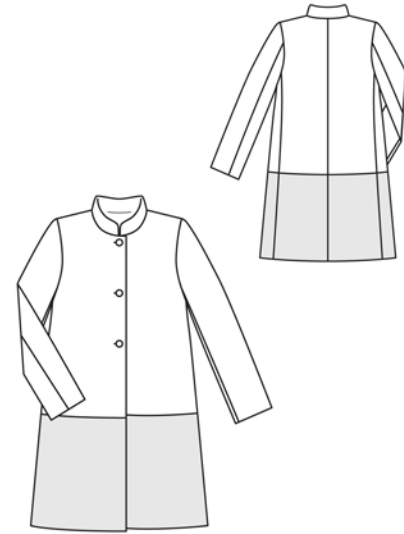
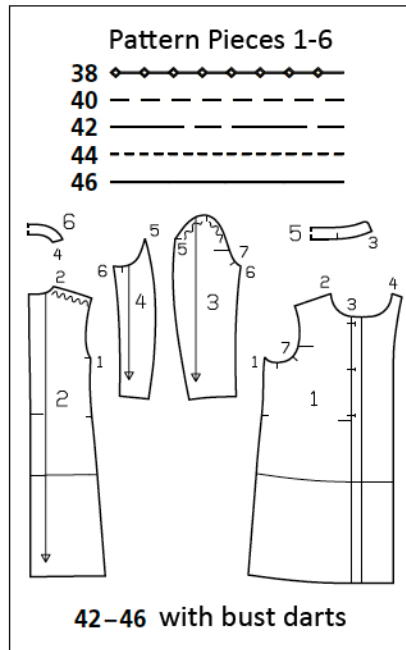
Recommended fabrics: Coat fabrics with a brushed surface.

### Preparations

Print the pattern out on letter or A4 sized paper. It is **very important** to not scale the document. Your pattern will print on multiple pages, which you will then tile together. Arrange the sheets on a large, hard and flat surface matching up the numbers and letters (i.e. 6A to 6A). Cut or fold one of the sides and match the edge to its corresponding side. Then, tape down in place so paper is secure.

Trace the pattern pieces from the pattern sheet following the lines and markings for style 101 and your size. Cut pieces 1 and 2 apart on the marked seam lines = upper and lower front pieces and upper and lower back pieces.

The buttonholes on piece 1 are marked for size 38. For sizes 40 – 46, mark the top buttonhole the same distance from neck edge as for size 38. The bottom buttonhole is the same for all sizes. Centre the third buttonhole in between. To cut the lining, glue the cut-apart pattern pieces together again.

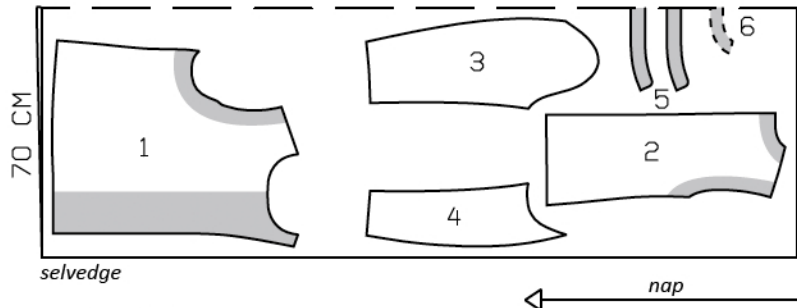


**burda style magazine patterns do not have seam allowance included.**

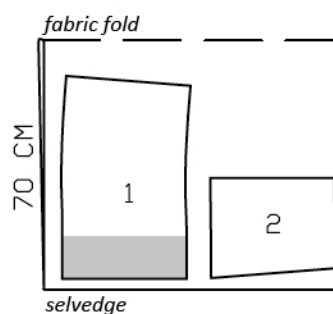
Seam and hem allowance to be added:

Seams and edges 1.5 cm (5/8 in), hem and sleeve hems 4 cm (1 5/8 ins), lining 1.5 cm (5/8 in).

Plaid Mohair, 140cm wide  
*fabric fold*



Loden Cloth, 140cm wide  
*fabric fold*



Cut from a double layer of fabric, right side facing in. Note direction of nap on mohair. Match plaid lines at seams on plaid fabric.

### Cutting Out

#### Mohair fabric:

- 1 upper front 2x
- 2 upper back 2x
- 3 upper sleeve 2x
- 4 under sleeve 2x
- 5 standing collar, on a fold 2x
- 6 back facing, on a fold 1x

#### Loden fabric:

- 1 lower front 2x
- 2 lower back 2x

Lining: piece 1 minus width of facing; piece 2 minus neck facing and on a fold at centre back, with an ease pleat of about 2 cm (3/4 in); pieces 3 and 4.

Interfacing: See pattern layout. Also interface hem allowances.

Vilene Bias Tape/ stay tape: Iron onto shoulder seam edges of fronts.

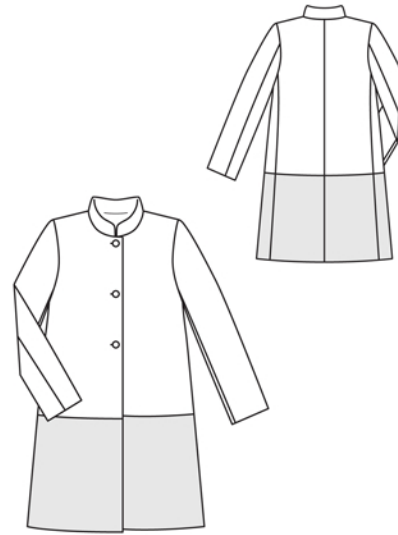
### Sewing

Stitch bust darts for sizes 42 – 46. Press darts down.

Stitch upper front and back pieces to respective lower pieces. Press seams open. Stitch fronts to back pieces (seam number 1). Stitch centre back seam and shoulder seams.

Turn front self-facings to outside and stitch to back neck facing. Stitch facing to neck edge, from each front edge (fold) to centre front. Leave facing lying right sides together with coat for now.

Standing collar: Lay collar pieces right sides together. Stitch along front and upper edges, beginning and ending stitching in front exactly on seam line of joining edge. Trim seam allowances. Turn collar right side out and press. Lay collar between coat and facing. Stitch outer collar piece to neck edge of coat and stitch inside collar piece to facing. Press seams open. Turn facing to inside. Pin collar joining seams together. In back, lay facing up again and stitch seam allowances together, close to collar joining seam. Lay facing down.



Unfold facings at hem. Press hem allowance to inside and sew in place by hand. Lay facings to inside again and sew to hem allowance.

Stitch sleeve seams. Press hem allowances to inside and sew in place.

Set in sleeves, easing sleeve caps.

Stitch ease pleat in back lining piece, stitching about 5 cm (2 ins) long at upper and lower edges and basting in between. Press pleat to one side. Stitch seams of lining. Set in sleeve linings.

Line jacket: Stitch lining to inside edge of facing, leaving about 8 cm (3 1/4 ins) open at bottom. Place lining inside jacket with wrong sides facing, pulling linings into sleeves. Pin a fold in lining, about 1 cm (3/8 in) deep, above jacket hem and sleeve hems. Turn in lining and sew to hem allowances by hand. Remove pins, lay extra length of lining down, and press. Sew remaining front edges of lining in place.

Work buttonholes in right front.

## Additional Information:

**Burda patterns do not include seam and hem allowances.** We recommend adding 1-2 cm (3/8 - 3/4 inch) for seams and 2-5 cm (3/4 - 2 inch/es) for hems. Refer to your specific pattern instructions for exact measurements.

The fabric requirements are based on the fabric used for the original designs. These amounts will change if you use fabric of a different width. The pattern of the fabric determines whether all the pieces must be cut in the same direction or whether some can be reversed to save fabric.

The cutting layout printed with the instructions shows the best way to place the pattern pieces on our original fabric. Fold the fabric double with the right side facing in. The fabric then has a fold edge and a selvedge edge. When cutting from a single fabric layer, the right side should face up.

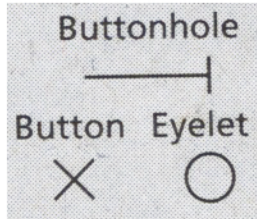
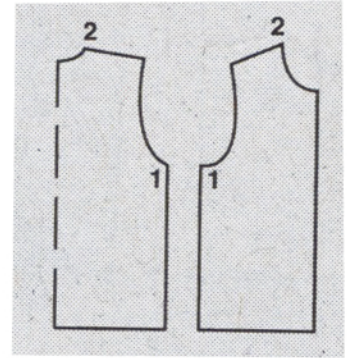
Pattern pieces which are shown in the cutting layout with broken outlines should be pinned to the fabric with their printed side facing down.

Grey shaded areas in the cutting layout indicate which pieces are to be interfaced.

Transfer the pattern piece lines to the wrong side of your fabric with burda dressmaker's carbon paper. Hand-baste along lines (e.g. for pockets or centre front) to make them visible on the right side of the fabric.

## Key Symbols:

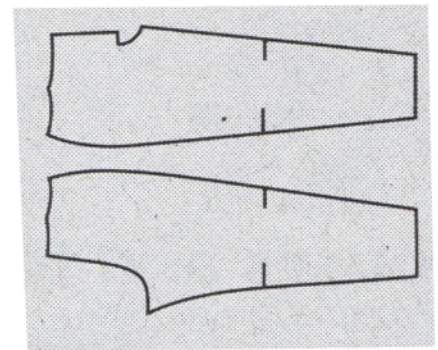
**Seam numbers**  
show where pattern pieces must be sewn together. Match pieces with the same numbers.



**Seam marks**  
on long seams. Match the small symbols to one another.



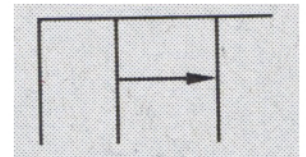
**Presser foot**  
is the symbol for seam and top-stitching lines.



**Scissors**  
indicate edges to be cut without seam allowances and also slash lines, e.g. pocket openings.



**Pleat symbol**  
Fold pleat in direction of arrow.



**Placket/slit mark**  
Indicates beginning/ end of placket/slit.

