

### 113A Skirt

Burda sizes 36, 38, 40, 42, 44

Length from waist 55 cm (21 3/4 ins)

Centre of waistband = waist

### Materials

Duchesse,

width: 150 cm (55 in)

length: 1.10 – 1.10 – 1.20 – 1.20 – 1.25 m

(1 1/4 – 1 1/4 – 1 3/8 – 1 3/8 – 1 1/2 yds).

Petersham ribbon, 2.5 cm (1 in) wide and 1.60 – 1.70 – 1.80 – 1.90 – 1.90 m (1 3/4 – 1 7/8 – 2 – 2 1/8 – 2 1/8 yds) long.

1 metal zip, 20 cm (8 ins) long.

1 button.

Recommended fabrics: Skirt fabrics with some body.

### Preparations

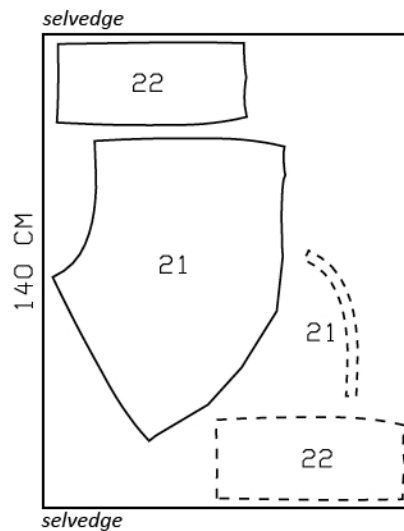
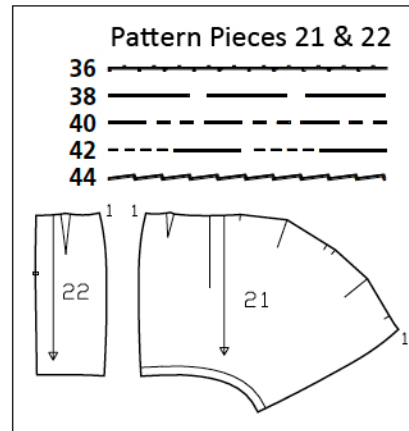
Print the pattern out on letter or A4 sized paper. It is **very** important to not scale the document. Your pattern will print on multiple pages, which you will then tile together. Arrange the sheets on a large, hard and flat surface matching up the numbers and letters (i.e. 6A to 6A). Cut or fold one of the sides and match the edge to its corresponding side. Then, tape down in place so paper is secure.

Trace the pattern pieces from the pattern sheet following the lines and markings for style 113A and your size. Trace hem facing from piece 21 as a separate pattern piece.

**burda style magazine patterns do not have seam allowance included.**

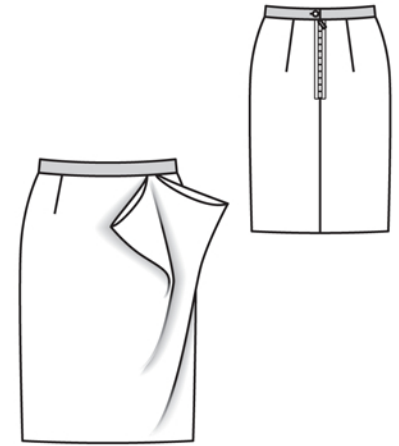
Seam and hem allowance to be added:

Seams and edges 1.5 cm (5/8 in), hem on back skirt panel 3 cm (1 1/4 ins), no allowance on inner edge of facing.



### Cutting Out

21 front skirt panel 1x  
front facing 1x  
22 back skirt panel 2x



Cut from a single layer of fabric right side facing up. Place the asymmetrical front skirt panel, printed side up, on the fabric. Place the hem facing printed side down on the fabric. Cut right and left back skirt panels as opposites.

## Sewing

Stitch darts and press toward centre. Stitch centre back seam below slit mark. Press seam allowances open and press slit allowances to wrong side.

Work from right side of garment to pin zip to opening edges so that teeth lie even with edges. Turn in bottom ends of zip tapes. Stitch zip tapes in place, close to teeth of zip and edges - stitch tapes in place.

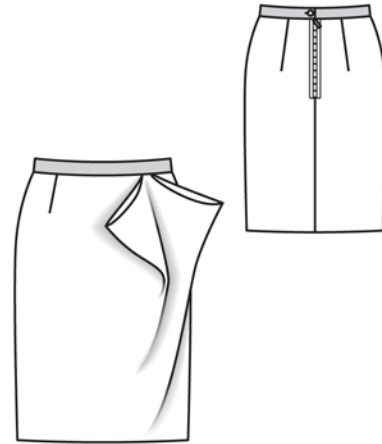
For the "pockets", fold front skirt panel on fold lines, right side facing in. Stitch along upper edge of skirt panel, from each fold edge to next marking then stitch upward from marking to edge of seam allowance. Clip seam allowances here diagonally into stitched corner. Pull "pockets" to outside and poke pointed upper corner to inside, about 6 cm (2 3/8 ins) wide.

Stitch hem facing right sides together with lower edge of front skirt panel. Trim seam allowances. Lay facing down and stitch to seam allowances, close to seam.

Stitch side seams. Press seam allowances open.

Turn one end of petersham ribbon under, about 1 cm (3/8 in) wide, and press. Measure and mark 75 – 79 – 83 – 87 – 91 cm (29 3/4 – 31 1/4 – 32 3/4 – 34 1/4 – 36 ins) from this end. Work from inside to lay petersham ribbon on seam allowance on upper edge of skirt so that pressed end extends past right back slit edge, 3 cm (1 1/4 ins) wide, and marking meets left edge of slit. Edgestitch lower edge of ribbon in place. Fold ribbon out over left slit edge. Pin edges of ribbon together, catching seam allowance of skirt in between. Turn in end of ribbon. Edgestitch ribbon edges together. Work buttonhole in left end of waistband.

Press front hem facing and back hem allowance to inside. Sew hem allowance in place by hand.



## Additional Information:

**Burda patterns do not include seam and hem allowances.** We recommend adding 1-2 cm (3/8 - 3/4 inch) for seams and 2-5 cm (3/4 - 2 inch/es) for hems. Refer to your specific pattern instructions for exact measurements.

The fabric requirements are based on the fabric used for the original designs. These amounts will change if you use fabric of a different width. The pattern of the fabric determines whether all the pieces must be cut in the same direction or whether some can be reversed to save fabric.

The cutting layout printed with the instructions shows the best way to place the pattern pieces on our original fabric. Fold the fabric double with the right side facing in. The fabric then has a fold edge and a selvedge edge. When cutting from a single fabric layer, the right side should face up.

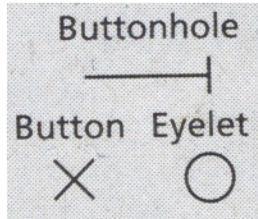
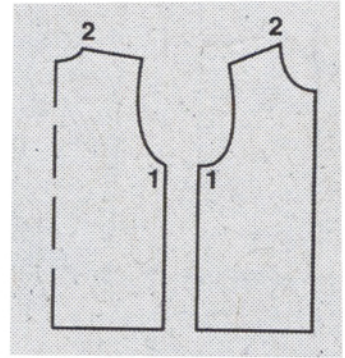
Pattern pieces which are shown in the cutting layout with broken outlines should be pinned to the fabric with their printed side facing down.

Grey shaded areas in the cutting layout indicate which pieces are to be interfaced.

Transfer the pattern piece lines to the wrong side of your fabric with burda dressmaker's carbon paper. Hand-baste along lines (e.g. for pockets or centre front) to make them visible on the right side of the fabric.

## Key Symbols:

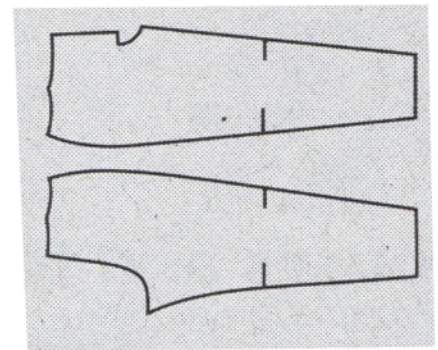
**Seam numbers**  
show where pattern pieces must be sewn together. Match pieces with the same numbers.



**Seam marks**  
on long seams. Match the small symbols to one another.



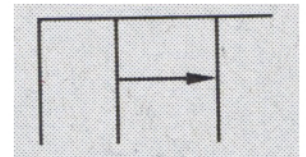
**Presser foot**  
is the symbol for seam and top-stitching lines.



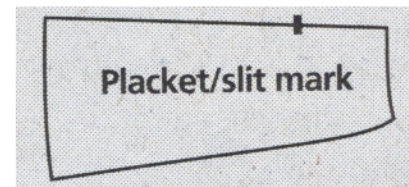
**Scissors**  
indicate edges to be cut without seam allowances and also slash lines, e.g. pocket openings.



**Pleat symbol**  
Fold pleat in direction of arrow.



**Placket/slit mark**  
Indicates beginning/ end of placket/slit.



**Gather**  
**Ease**  
**Stretch**

