

103 Dress

Burda sizes 36, 38, 40, 42, 44

Length from waist 57 cm (22 1/2 ins)

Materials

Silk velvet,
width: 140 cm (55 in)
length: 1.20 m (1 3/8 yds) for all sizes.

Shot chiffon,
width: 115 cm (45 in)
length: 0.60 m (3/4 yd).

Elastic,
width: 2 cm (3/4 in)
length: size 36: 0.70 m (28 ins);
size 38: 0.75 m (30 ins);
size 40: 0.80 m (32 ins);
sizes 42 and 44: 0.85 m (34 ins).

1 small button.

Recommended fabrics: Velvet or softly draping dress fabrics and sheer fabrics for the yoke.

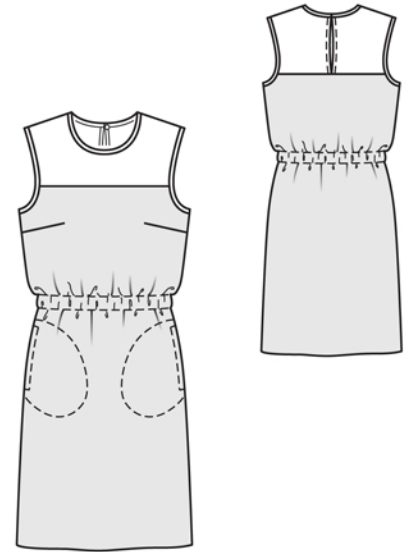
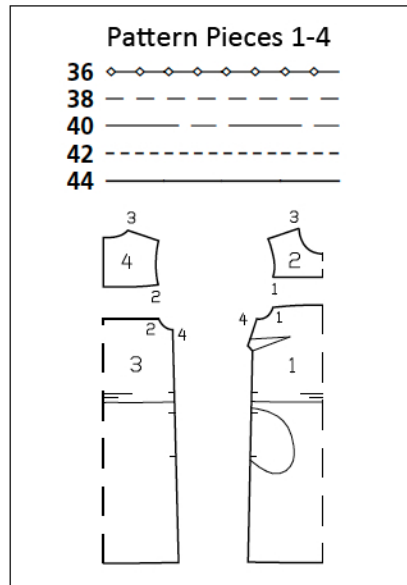
Preparations

Print the pattern out on letter or A4 sized paper. It is **very important** to not scale the document. Your pattern will print on multiple pages, which you will then tile together. Arrange the sheets on a large, hard and flat surface matching up the numbers and letters (i.e. 6A to 6A). Cut or fold one of the sides and match the edge to its corresponding side. Then, tape down in place so paper is secure.

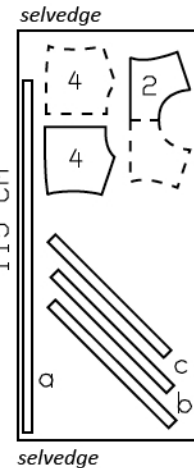
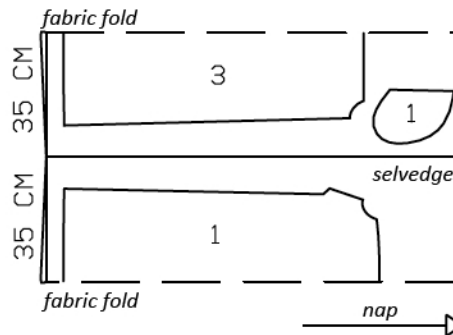
Trace the pattern pieces from the pattern sheet following the lines and markings for style 103 and your size. Trace the pocket piece from piece 1 as a separate pattern piece – it is the same for all sizes.

burda style magazine patterns do not have seam allowance included.

Seam and hem allowance to be added:
4 cm (1 5/8 ins) for hem and 1.5 cm (5/8 in) at all other seams and edges.



Velvet, 140cm wide



Shot chiffon,
115cm wide

Right side faces in on a double layer of fabric. Right side faces up on a single layer of fabric. Cut right and left pieces as opposites.

Cutting Out

Silk velvet:
1 front, on a fold 1x
pocket piece 2x
3 back, on a fold 1x

Shot chiffon:
2 front yoke, on a fold 1x
4 back yoke 2x

Draft the following pieces NOT included in the pattern:

- a) casing strip for size 36: 100 cm (39 1/2 ins); sizes 38, 40: 105 cm (41 1/2 ins); size 42: 110 cm (43 1/2 ins); size 44: 115 cm (45 1/4 ins) long, all 5 cm (2 ins) wide (incl. allowances),
- b) bias binding strip for neck edge, 50 cm (20 ins) long, 3.5 cm (1 1/2 ins) wide (incl. allowances),
- c) 2 bias binding strips for armholes, for size 36: 45 cm (17 3/4 ins); sizes 38, 40: 50 cm (19 3/4 ins); sizes 42, 44: 55 cm (21 3/4 ins) long, 3.5 cm (1 1/2 ins) wide (incl. allowances).

Sewing**Bust darts:**

Fold front so that lines of each dart meet, right side facing in. Pin dart lines together. Stitch, beginning at side edge and stitching toward point. Do not backstitch at point of dart but knot ends of thread securely (image 1). Press darts down.

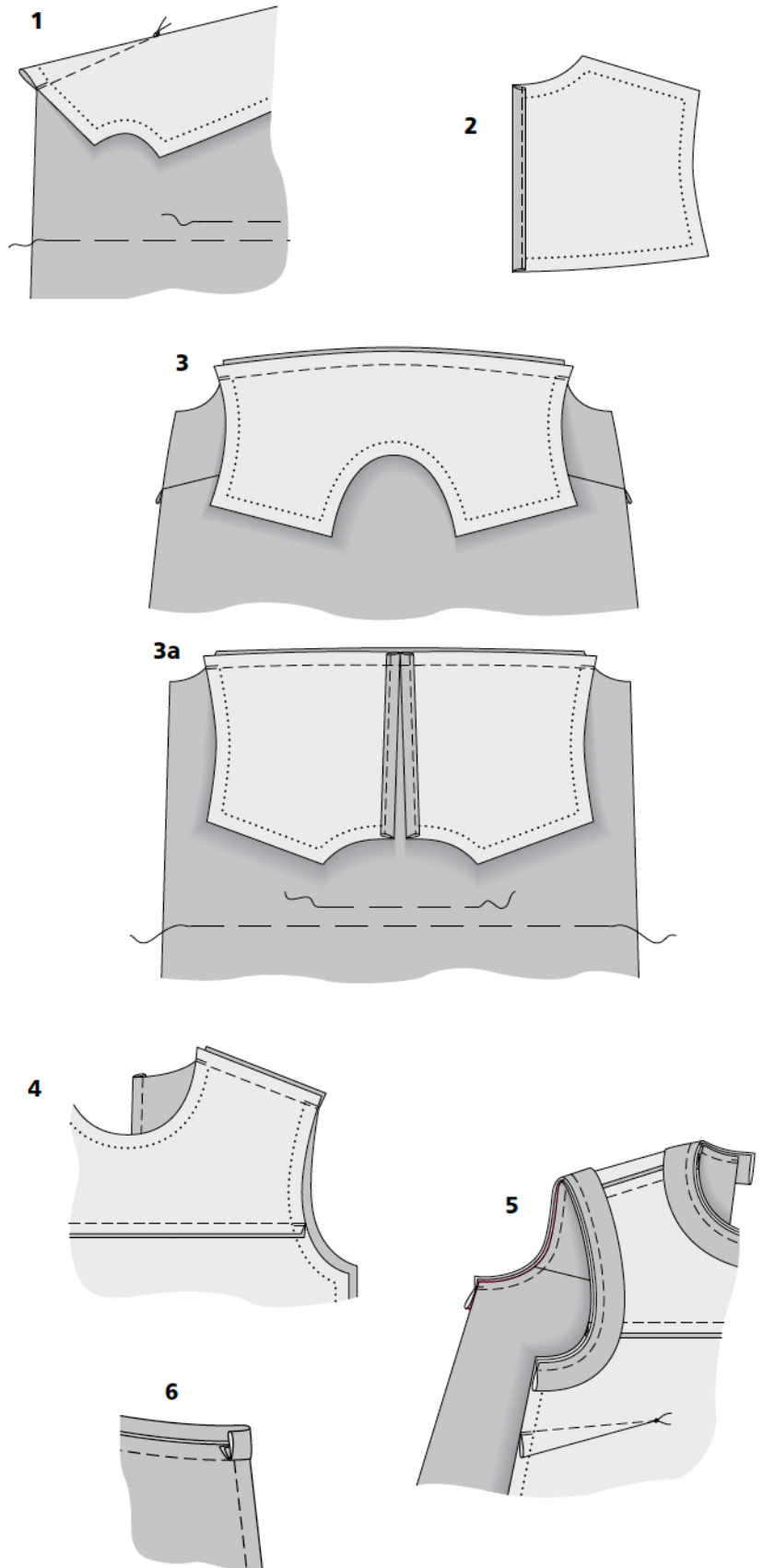
Yoke:

Press edges of allowances on back edges of back yoke pieces to inside, 5 mm (3/16 in) wide. Then press allowances to inside on marked seam line (3 layers of fabric) and edgestitch in place (image 2). Pin front yoke right sides together with front. Pin back yokes right sides together with backs so that back yoke edges meet at centre back. Stitch yoke pieces to front and backs (images 3 and 3a). Trim seam allowances to 7 mm (1/4 in) wide, neaten edges together, and press down.

Lay front right sides together with back pieces. Pin shoulder seams. Stitch seams (image 4). Trim allowances to 7 mm (1/4 in) wide, neaten edges together, and press allowances onto back.

Bind edges of neck and armhole edges:

Fold each bias strip in half lengthwise, right side facing out. Press fold edge. Trim away seam allowances on neck and armhole edges, along marked seam lines. Pin each folded bias strip to wrong fabric side of respective edge so that open edges lie even with edge and fold edge of strip lies on garment piece. Stitch bias strips in place, stitching 5 mm (3/16 in) from edge (image 5). Turn bias strips over joining seams and press. Turn under ends of bias strip at back opening edges (image 6).

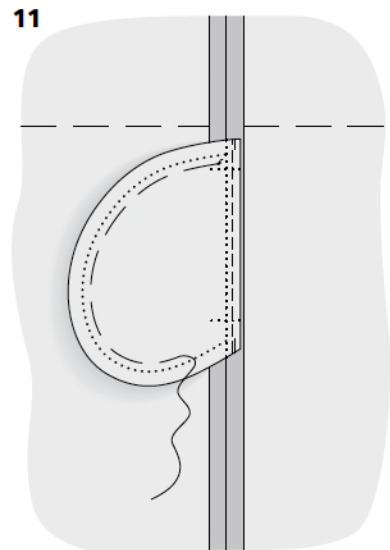
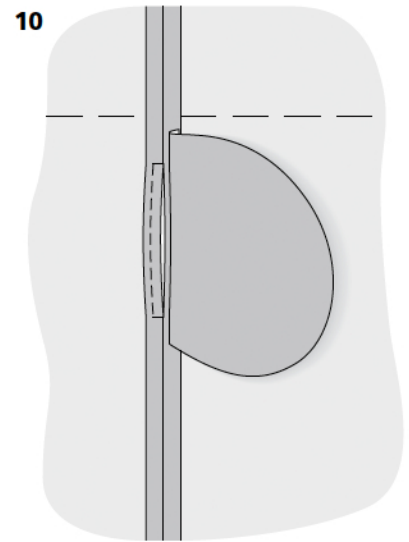
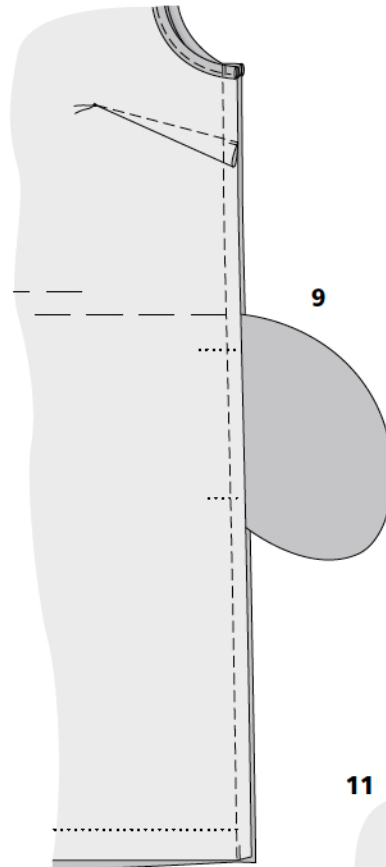
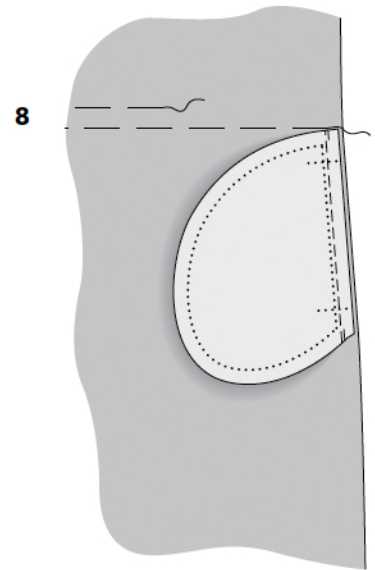
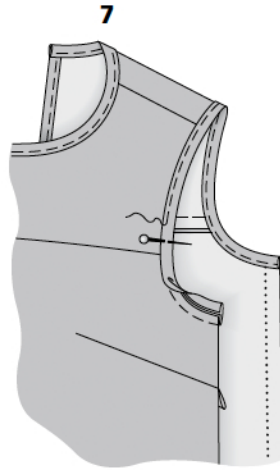


Sewing Continued...

Fold bias strips over neck and armhole edges to right fabric side of dress and pin to joining seam. Edgestitch each bias strip in place (image 7).

In-seam pockets, side seams:

Neaten side seam allowances of front and back pieces and neaten all edges of pocket pieces. Pin pocket pieces right sides together with pocket opening edges of back pieces, matching markings. Stitch pocket pieces in place, close to marked seam lines (image 8). Turn pocket pieces over seam allowances. Press. Lay dress front right sides together with dress back. Pin side seams. Stitch, but do not stitch across pocket openings, between markings (image 9). Press seam allowances open and press allowances on front pocket opening edges to inside. Topstitch dress front 7 mm (1/4 in) from each pocket opening edge and stitch horizontally to side seam at top and bottom of pocket opening (image 10). Press pocket pieces forward and baste to dress front (image 11). Lay paper pattern piece for pocket on right fabric side of dress (pocket opening edge meeting pocket opening edge) and pin in place. Stitch along curved edge of pattern piece, thereby catching pocket piece. Sew side seam allowances to armhole edges with a few stitches by hand.



Sewing Continued...

Elastic casing:

First fold casing strip in half lengthwise and press fold lightly. Unfold strip again. Now press long edges to wrong side so that both meet at the pressed centre crease. Finished width of strip = 2.5 cm (1 in). Pin casing strip to wrong fabric side of dress, over marked stitching lines for elastic casing. Turn ends of strip under at one side seam (image 12). Work from right side of dress to stitch casing strip in place.

Pull elastic into casing. Sew ends of elastic together for the following circumferences:
size 36: 66 cm (26 ins); size 38: 70 cm (27 3/4 ins); size 40: 74 cm (29 1/4 ins); size 42: 78 cm (30 3/4 ins); size 44: 82 cm (32 1/2 ins).

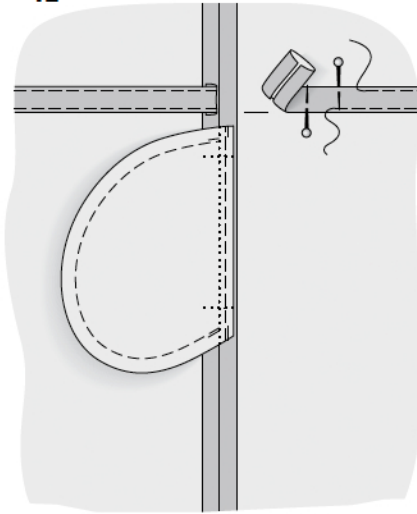
Hem:

Neaten lower edge of dress. Press hem allowance to inside and sew in place loosely by hand (image 13).

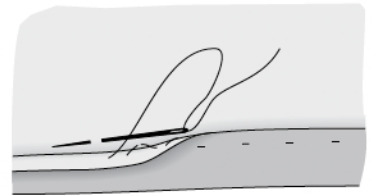
Thread loop, button

Work a thread loop at top of left back yoke edge. First stretch 5 or 6 threads (length of button loop must match your button) then cover with closely spaced buttonhole stitches (image 14). Sew button to right edge of yoke, to match button loop.

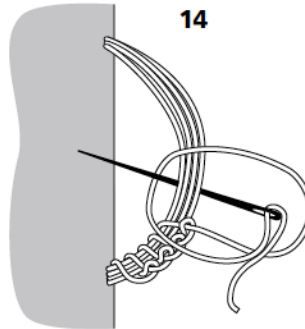
12



13



14



Additional Information:

Burda patterns do not include seam and hem allowances. We recommend adding 1-2 cm (3/8 - 3/4 inch) for seams and 2-5 cm (3/4 - 2 inch/es) for hems. Refer to your specific pattern instructions for exact measurements.

The fabric requirements are based on the fabric used for the original designs. These amounts will change if you use fabric of a different width. The pattern of the fabric determines whether all the pieces must be cut in the same direction or whether some can be reversed to save fabric.

The cutting layout printed with the instructions shows the best way to place the pattern pieces on our original fabric. Fold the fabric double with the right side facing in. The fabric then has a fold edge and a selvedge edge. When cutting from a single fabric layer, the right side should face up.

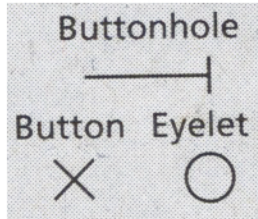
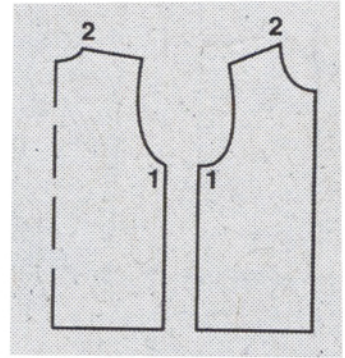
Pattern pieces which are shown in the cutting layout with broken outlines should be pinned to the fabric with their printed side facing down.

Grey shaded areas in the cutting layout indicate which pieces are to be interfaced.

Transfer the pattern piece lines to the wrong side of your fabric with burda dressmaker's carbon paper. Hand-baste along lines (e.g. for pockets or centre front) to make them visible on the right side of the fabric.

Key Symbols:

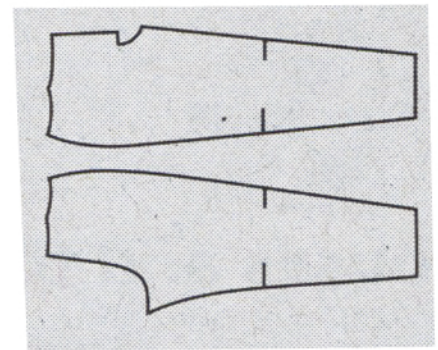
Seam numbers
show where pattern pieces must be sewn together. Match pieces with the same numbers.



Seam marks
on long seams. Match the small symbols to one another.



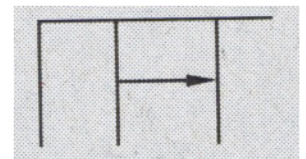
Presser foot
is the symbol for seam and top-stitching lines.



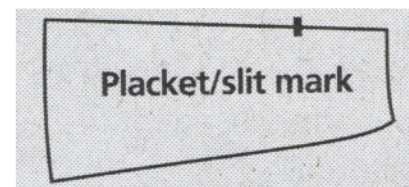
Scissors
indicate edges to be cut without seam allowances and also slash lines, e.g. pocket openings.



Pleat symbol
Fold pleat in direction of arrow.



Placket/slit mark
Indicates beginning/end of placket/slit.



Gather
Ease
Stretch

