

116 Skirt

Burda sizes 36, 38, 40, 42, 44, p. 42

Length from waist 97 cm (38 1/4 ins)

Waist 7 cm (2 3/4 ins) above waistband attachment seam

Materials

Lightweight sweatshirt fabric, with two-way stretch,
width: 150 cm (59 ins)
length: 1.45 m (1 3/4 yds) for all sizes.

A twin sewing machine needle.

Recommended fabrics: Sweatshirt fabric or jersey.
Use stretch fabrics only.

Preparations

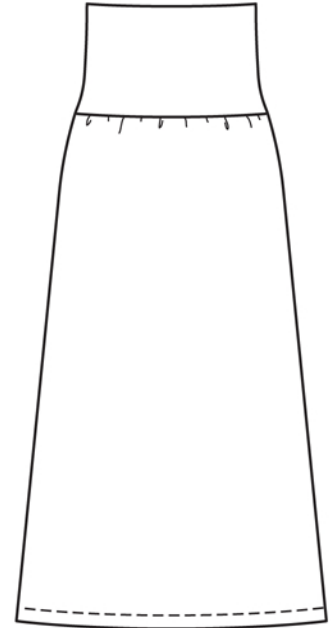
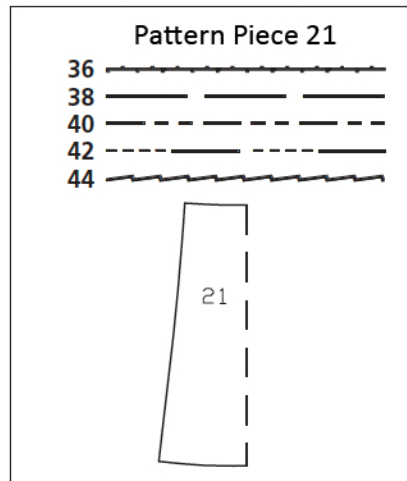
Print the pattern out on letter or A4 sized paper. It is **very important** to not scale the document. Your pattern will print on multiple pages, which you will then tile together. Arrange the sheets on a large, hard and flat surface matching up the numbers and letters (i.e. 6A to 6A). Cut or fold one of the sides and match the edge to its corresponding side. Then, tape down in place so paper is secure.

Trace the pattern pieces from the pattern sheet following the lines and markings for style 114 and your size.

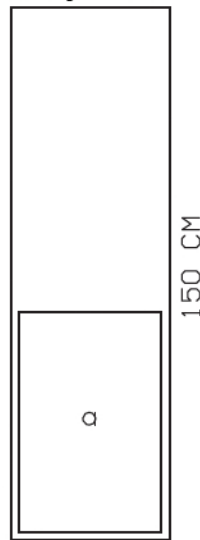
burda style magazine patterns do not have seam allowance included.

Seam and hem allowance to be added:
Jersey: seams and edges 1.5 cm (5/8 in), front edges 2.5 cm (1 in), hem 2.5 cm (1 in), sleeve hems 4.5 cm (1 7/8 ins) (flare sleeve hem allowance).

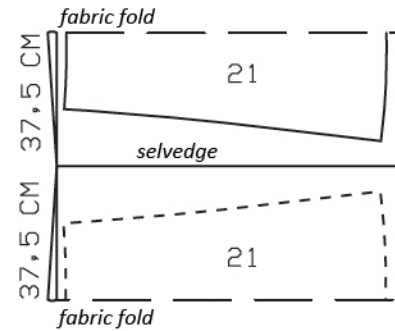
Chiffon: seams, edges, and hem 1.5 cm (5/8 in).



selvedge



Fold the fabric as shown in the pattern layout. Right side faces in on a double layer of fabric; right side faces up on a single layer.



Cutting Out

21 skirt piece, on a fold 2x

a) waistband, 62 – 66 – 70 – 74 – 78 cm (24 1/2 – 26 – 27 3/4 – 29 1/4 – 30 3/4 ins) long, 40 cm (16 ins) wide, finished width 20 cm (8 ins).

Sewing

Stitch side seams. Press seams open.

Stitch waistband ends together (side seam). Mark other "side seam" opposite this seam, centred between front and back. Fold waistband in half lengthwise, right side facing out. Stitch long edges together to upper skirt edge, stretched to fit, matching centre fronts, centre backs, and side seams.

Press hem to inside. Work from outer side of skirt and use twin needle to stitch hem 3 cm (1 1/4 ins) from lower edge.

