

114 Jacket

Burda sizes 36, 38, 40, 42, 44

Back length approx. 78 cm (30 3/4 ins)

Materials

Jersey,
width: 150 cm (59 ins)
length: 1.35 – 1.35 – 1.40 – 1.40 – 1.40m (1 5/8 yds).

Crêpe chiffon (inside fronts),
width: 140 cm (55 ins)
length: 1.05 – 1.10 – 1.10 – 1.10 – 1.10m (1 1/4 yds).

A twin sewing machine needle.

Recommended fabrics: Jersey, combined with fine transparent fabrics.

Preparations

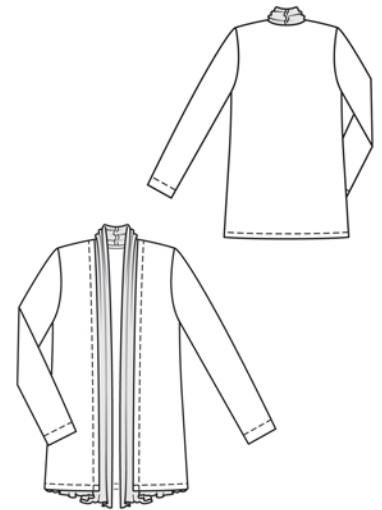
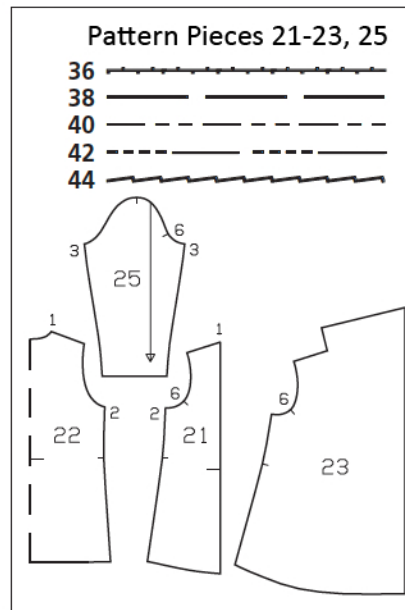
Print the pattern out on letter or A4 sized paper. It is **very important** to not scale the document. Your pattern will print on multiple pages, which you will then tile together. Arrange the sheets on a large, hard and flat surface matching up the numbers and letters (i.e. 6A to 6A). Cut or fold one of the sides and match the edge to its corresponding side. Then, tape down in place so paper is secure.

Trace the pattern pieces from the pattern sheet following the lines and markings for style 114 and your size.

burda style magazine patterns do not have seam allowance included.

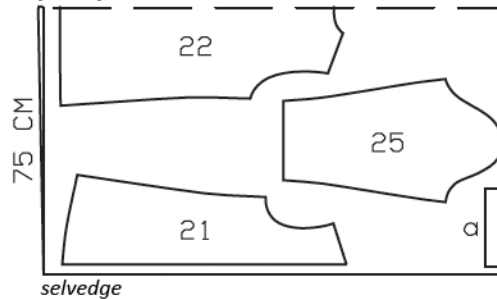
Seam and hem allowance to be added:
Jersey: seams and edges 1.5 cm (5/8 in), front edges 2.5 cm (1 in), hem 2.5 cm (1 in), sleeve hems 4.5 cm (1 7/8 ins) (flare sleeve hem allowance).

Chiffon: seams, edges, and hem 1.5 cm (5/8 in).



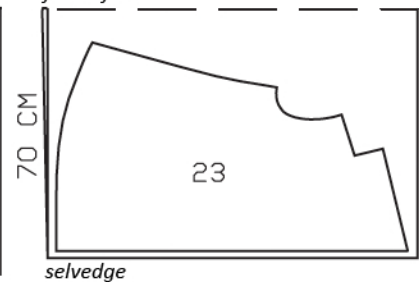
Jersey, 150cm wide

fabric fold



Crêpe Chiffon, 140cm wide

fabric fold



Cut from a double layer of fabric, right side facing in.

Cutting Out

Jersey:

21 front 2x

22 back, on a fold 1x

25 sleeve 2x

Draft the following piece NOT included in the pattern:

a) facing strip for back neck edge, 20 – 20 – 21 – 21 – 22 cm (8 – 8 – 8 3/8 – 8 3/8 – 8 3/4 ins) long, 4 cm (1 5/8 ins) wide (incl. allowances).

Crêpe chiffon:

23 inside front with collar 2x

Sewing

On inside fronts, stitch centre back seam of integrated collar as a flat-felled seam: Stitch seam. Press seam allowances to one side. Trim seam allowance which lies underneath to 5 mm (3/16 in). Turn under edge of seam allowance which lies on top and baste. Work from right side to stitch 7 mm (1/4 in) from seam.

Finish hem edges, front edges, and collar edge with closely spaced zigzag stitching: Press allowance to wrong fabric side. Work from right side to stitch along fold edge with small, closely spaced zigzag stitching. On inside, carefully trim allowance close to stitching.

On each front jacket piece, first press hem allowance then allowance on front edge to inside. Work from right side and use the twin needle to stitch these in place, 2 cm (3/4 in) from edges.

On inside fronts, clip allowances into corners between shoulder and collar. Lay inside fronts on inner side of jacket fronts, with right side facing wrong side, and baste to side seam edge, armhole edge, and shoulder seam edge.

Stitch side seams and shoulder seams. Seam allowance of back neck edge and back hem allowance extend. Neaten side seam allowances and shoulder seam allowances each together and press onto back. Baste back collar edge to back neck edge, right sides facing.

Back neck edge: Fold facing strip lengthwise, right side facing out, and press. Pin folded facing strip to neck edge, over collar, so that fold edge of strip lies on garment piece, 1 cm (3/8 in) past seam line. Stitch along seam line. Trim seam allowances. Turn facing strip up and turn ends under. Turn facing strip to inside. Topstitch 7 mm (1/4 in) from back neck edge.

Stitch sleeve seams. Press sleeve hem allowances to inside. Work from right side and use twin needle to stitch sleeve hems 4 cm (1 5/8 ins) from lower edges of sleeves.

Set in sleeves.

On back, turn hem allowance to inside and stitch in place with the twin needle.

