

119 Top

Burda sizes 34, 36, 38, 40, 42

Length from waist 32 cm (12 3/4 ins)

Materials

Stretch cotton jersey,
width: 150 cm (59 ins)
length: 1.40 – 1.40 – 1.45 – 1.45 – 1.45 m
(1 5/8 – 1 5/8 – 1 3/4 – 1 3/4 – 1 3/4 yds).

Washed silk, as contrasting fabric,
width: 135 cm (53 ins)
length: 0.55 m (3/4 yd) for all sizes.

Vilene Bias Tape/ stay tape.

Recommended fabrics: Stretch jersey. Use stretch jersey fabrics only.

Preparations

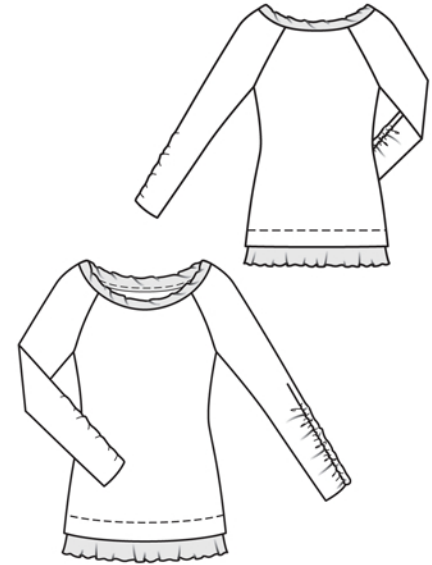
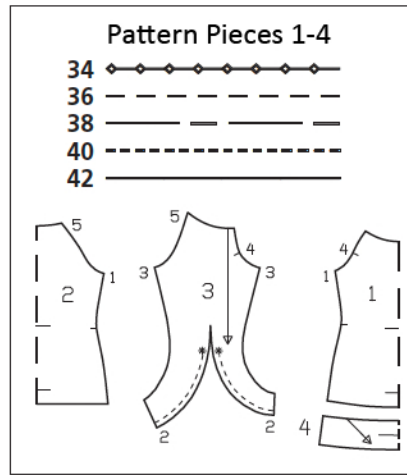
Print the pattern out on letter or A4 sized paper. It is **very important** to not scale the document. Your pattern will print on multiple pages, which you will then tile together. Arrange the sheets on a large, hard and flat surface matching up the numbers and letters (i.e. 6A to 6A). Cut or fold one of the sides and match the edge to its corresponding side. Then, tape down in place so paper is secure.

Trace the pattern pieces from the pattern sheet following the lines and markings for style 119 and your size.

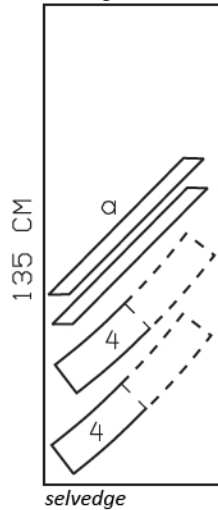
burda style magazine patterns do not have seam allowance included.

Seam and hem allowance to be added:

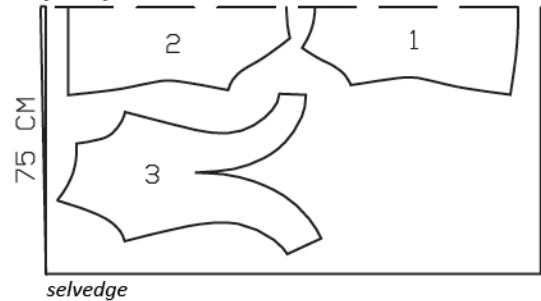
Seams and edges 1.5 cm (5/8 in), hem 6 cm (2 3/8 ins), sleeve hems 3 cm (1 1/4 ins). No allowances on lower edge of flounce pieces.



Washed Silk, 130cm wide
selvage



Jersey, 150cm wide
fabric fold



Right side faces in on a double layer of fabric; right side faces up on a single layer of fabric.

Cutting Out

Jersey:

1 front, on a fold 1x
2 back, on a fold 1x
3 sleeve 2x

Silk fabric:

4 hem flounce, on a fold 2x

Draft the following piece NOT included in the pattern:

a) neck band, cut on bias, a total of 91 – 92 – 93 – 94 – 95 cm (36 – 36 1/4 – 36 3/4 – 37 – 37 1/2 ins) long, 4 cm (1 1/2 ins) wide, finished width 2 cm (3/4 in).

Vilene Bias Tape/ stay tape: Iron to wrong side of neck and armhole edges.

Sewing

Note: Stitch seams on stretch fabrics with a special stretch stitch or at a narrow zigzag setting.

Stitch side seams. Neaten seam allowances together and press to one side.

On each sleeve, cut dart in centre to approx. 1 cm (3/8 in) above asterisk. Gather each dart edge between hem line and asterisk to a length of 24 cm (9 1/2 ins). Stitch darts. Neaten seam allowances together and press to one side. Stitch sleeve seams (seam number 3). Press sleeve hem allowances to inside and sew in place by hand.

Stitch sleeves to armhole edges. Above underarm curve, press seam allowances toward sleeves.

Stitch seams of neck band. Fold band in half, wrong side facing in. Do not press band. Lay long edges of band together, then slide one edge along the other, by approx. 2 cm (3/4 in), and pin together to create slanted folds. Gather band edges together to 76 – 77 – 78 – 79 – 80 cm (30 – 30 1/2 – 30 3/4 – 31 1/4 – 31 1/2 ins). Stitch band to neck edge. Trim seam allowances to 7 mm (1/4 in) wide and press onto garment. Topstitch garment close to band attachment seam.

Press hem allowance to inside. Stitch side seams of hem flounce. Pin lower edge of garment to flounce at placement line, stretching garment edge to match edge of flounce. Stitch lower edge of garment as marked. Lower edge of flounce remains unfinished.

