

117 Blouse

Burda sizes 34/36, 38/40, 42/44

Materials

Viscose jersey,
width: 145 cm (57")
length: sizes 34/36, 38/40: 1.60 m (1 3/4 yds),
sizes 42/44: 2.15 m (2 3/8 yds)

Elastic, 7 mm (1/4") wide and 1.10 m (43 1/2") long

Piece of interfacing.

Recommended fabrics: Fine jerseys und softly draping blouse fabrics

Preparations

Print the pattern out on letter or A4 sized paper. It is **very important** to not scale the document. Your pattern will print on multiple pages, which you will then tile together. Arrange the sheets on a large, hard and flat surface matching up the numbers and letters (i.e. 6A to 6A). Cut or fold one of the sides and match the edge to it's corresponding side. Then, tape down in place so paper is secure.

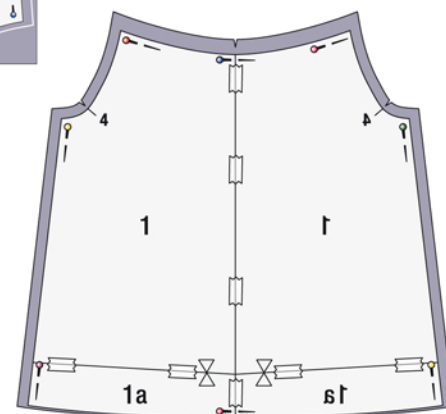
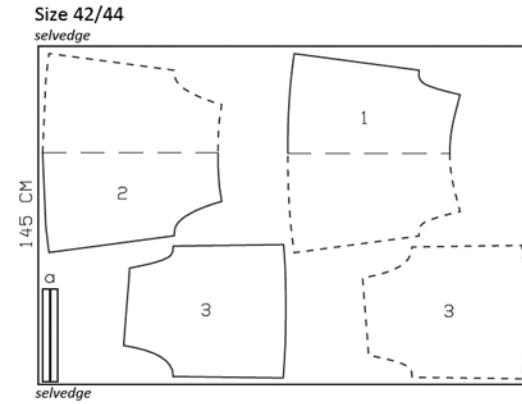
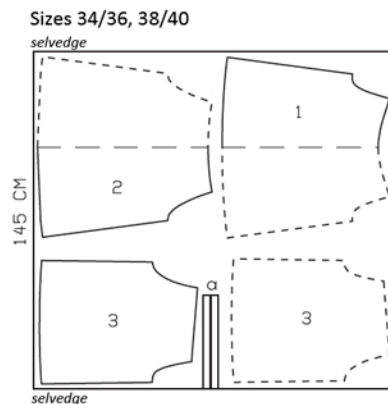
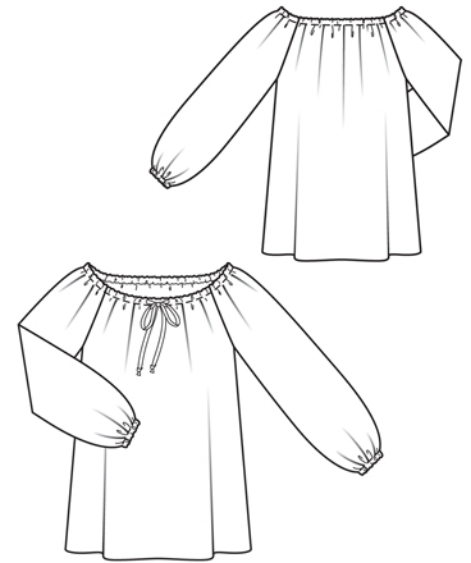
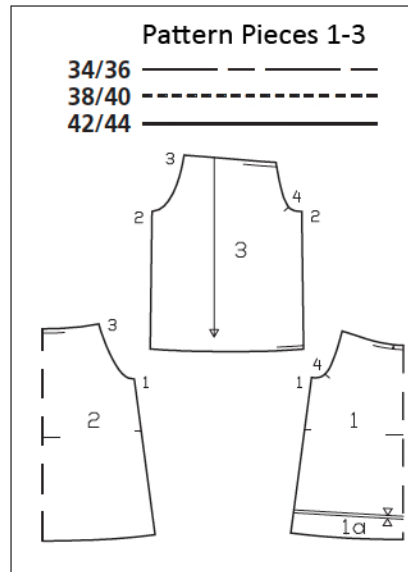
Trace the pattern pieces from the pattern sheet following the lines and markings for style 117 and your size.

Step One: Cut fabric pieces (sizes 34 – 40)

Unfold fabric, wrong side upwards. Lay pattern pieces on fabric and pin in place. Use tailor's chalk to draw seam and hem allowances along edges of pattern pieces: no hem allowance on front and back pieces, 2 cm (3/4") on the neck edges, and the top and bottom sleeve edges, and 1.5 cm (5/8") on the seams. Draw the ties (a). Cut out fabric pieces. Cut sizes 42/44 according to cutting layout.

Step Two: Transfer pattern markings to fabric

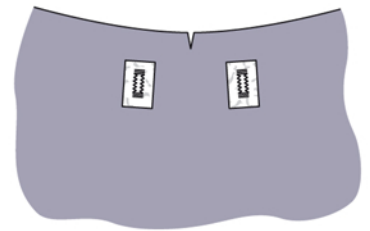
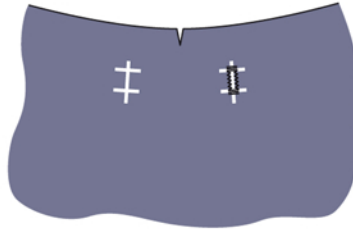
If fabric pieces are cut out exactly, it is not necessary to draw seam lines on fabric pieces. Mark the sleeve attachment marks (notch 4) as well as the centre of the front and back by making small clips into the edges of the seam allowances – 5 mm (3/16") is adequate.



Sewing

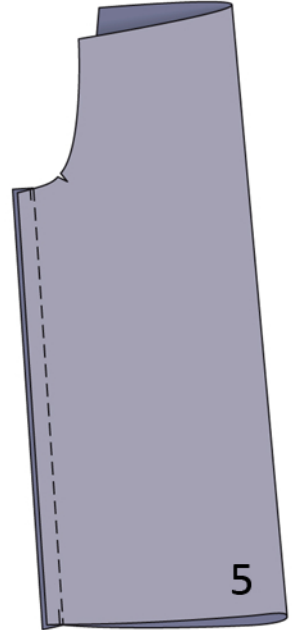
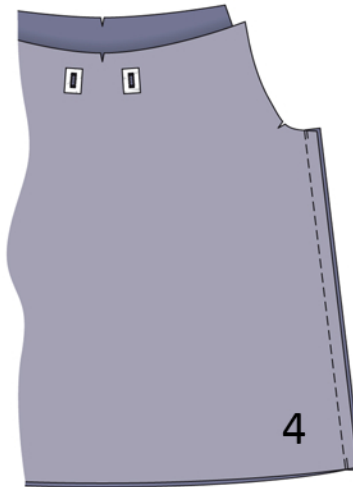
Step Three: casing slit

Mark 2 casing slits on the front (right side) with magic chalk: distance to front centre 3.5 cm (13/8"), to top edge of fabric 2.5 cm (1"), length of slit 1 cm (3/8"). Cut 2 pieces of fabric, approx. 3 x 3 cm (1 1/4 x 1 1/4"), as backing and reinforce with interfacing. Baste fabric pieces to wrong side of fabric, over area of slit markings. Sew the slits like buttonholes. Trim fabric pieces 5mm (3/16") from stitching.



Step Four: side seams

Lay front piece on back piece, right sides facing. Pin side seams together and stitch at width of seam allowances (1.5 cm, 5/8"). Finish seam allowances together: with the overlock machine, trim the allowances back to 7mm (1/4") or stitch 7 mm (1/4") from the stitching line with zigzag stitching. Trim fabric close to stitching.

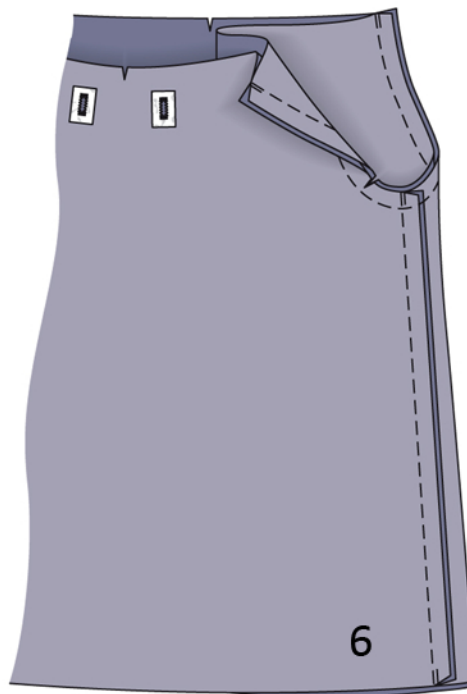


Step Five: sleeve seams

Fold each sleeve lengthwise, right side facing in. Pin sleeve seam edges together and stitch at width of seam allowances (1.5 cm, 5/8"). Finish seam allowances and press them forward. Turn sleeves right side out.

Step Six: attach sleeves

Pin each sleeve to armhole edge, right sides facing. Notches 4 (see step 2) and seams must match. Stitch sleeves in place (seam allowance width 1.5 cm, 5/8"). Finish seam allowances and press toward sleeves, from the top to the beginning of the underarm curve.



Sewing

Step Seven: neck edge

On neck edges of front and back, and on sleeves, press seam allowance under (2 cm, $\frac{3}{4}$ " wide). Turn edge of allowance under to a width of 1.5 cm ($\frac{5}{8}$ "), baste, and stitch in place close to edge.

Step Eight: ties

On each tie piece, press a narrow edge under, 5 mm ($\frac{3}{16}$ ") wide. Fold strips of fabric in half, wrong side facing in. Press. Unfold strips. Press long edges under, up to pressed fold, and press. Fold strips in half again, and stitch edges together close to edge. Cut a piece of elastic, 50 cm (20") long. Sew fabric strips to ends of elastic and pull into neck edge, using a safety pin as a bodkin.

Step Nine: lower sleeve edges

Turn allowance under to a width of 1.5 cm ($\frac{5}{8}$ "), baste, and stitch close to edge, leaving 2 cm ($\frac{3}{4}$ ") open to pull the elastic through. Cut 2 pieces of elastic (each 20 cm, 8" , long for sizes 34/36; 21 cm, 8 $\frac{3}{8}$ " , for sizes 38/40; 22 cm, 8 $\frac{3}{4}$ " , for sizes 42/44) and pull into lower sleeve edges. Sew ends of each elastic together. Sew seam openings closed.

