

113 Jacket

Burda sizes 36, 38, 40, 42, 44

Back length approx. 75 cm (30 ins)

Materials

Jersey, for short jacket,
width: 140 cm (55 ins)
length: 1.10 – 1.10 – 1.10 – 1.10 – 1.30 m
(1 1/4 – 1 1/4 – 1 1/4 – 1 1/4 – 1 1/2 yds).

Silk satin, for long jacket,
width: 130 cm (51 ins)
length: 1.75 – 1.80 – 1.80 – 1.85 – 1.85 m
(2 – 2 – 2 – 2 1/8 – 2 1/8 yds) without sleeves.

Twin sewing machine needle.

Recommended fabrics: Jersey combinee with satin.

Preparations

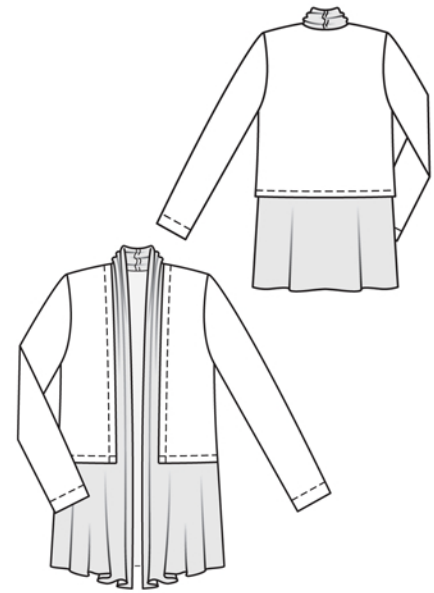
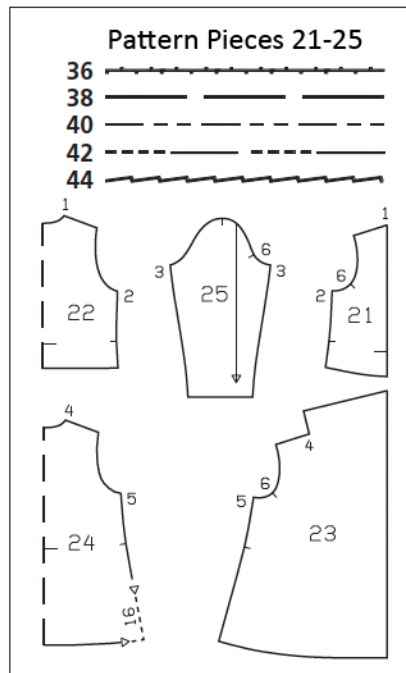
Print the pattern out on letter or A4 sized paper. It is **very important** to not scale the document. Your pattern will print on multiple pages, which you will then tile together. Arrange the sheets on a large, hard and flat surface matching up the numbers and letters (i.e. 6A to 6A). Cut or fold one of the sides and match the edge to it's corresponding side. Then, tape down in place so paper is secure.

Trace the pattern pieces from the pattern sheet following the lines and markings for style 111 and your size.

burda style magazine patterns do not have seam allowance included.

Seam and hem allowance to be added:
Short jacket: seams and edges 1.5 cm (5/8 in), front edges 2.5 cm (1 in), hem 2.5 cm (1 in), sleeve hems 4.5 cm (1 7/8 ins) (flare sleeve hem allowance).

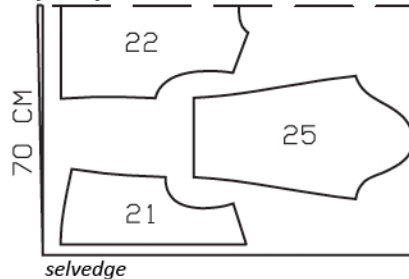
Long jacket: seams and edges 1.5 cm (5/8 in).



Jersey, 140cm wide

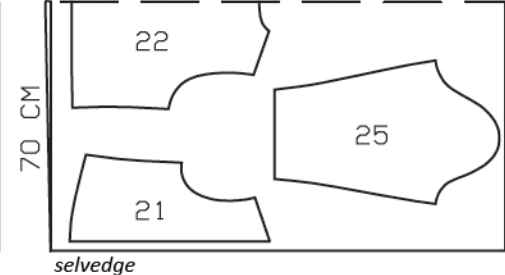
Sizes 36-42

fabric fold



Size 44

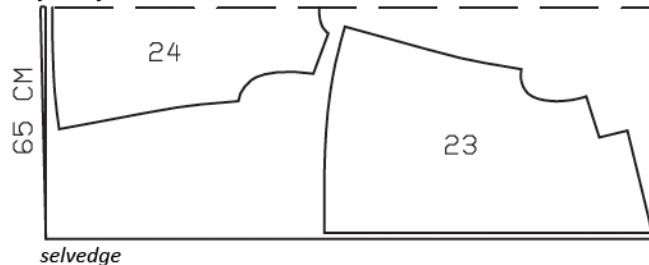
fabric fold



Satin, 130cm wide

Sizes 36-44

fabric fold



Cut from a double layer of fabric, right side facing in.

Cutting Out

Jersey:

21 front 2x
22 back, on a fold 1x
25 sleeve 2x

Satin:

23 front with integrated collar 2x
24 back, on a fold 1x

Sewing

Short jacket: Stitch side seams (seam number 2). Press seams open. Press hem allowance to inside. Stitch hem from right side with the twin needle, 2 cm (3/4 in) from lower edge. Press allowances on front edges to inside and stitch in place (twin machine needle). Stitch shoulder seams – at back neck edge, allowance of back extends. Press allowances onto back.

Long jacket: Stitch shoulder seams, beginning exactly at corner (seam number 4). Clip allowances of fronts inot corners. Neaten seam allowances together and press onto back. Stitch side seams.

Sew centre back collar seam as a flat-felled seam: Stitch seam. Press seam allowances to one side. Trim seam allowance which lies underneath to 5 mm (3/16 in). Turn under edge of seam allowance which lies on top and baste. Work from right side to stitch 7 mm (1/4 in) from seam.

Finish outer edges with closely spaced zigzag stitching: Press allowance to wrong fabric side. Work from right side to stitch along fold edge with small, closely spaced zigzag stitching. On inside, carefully trim allowance close to stitching.

Baste integrated collar to back neck edge of short jacket, from corner to corner, right sides facing. Then stitch back neck edge of long jacket to neck edge, over collar, (wrong fabric sides are facing). Lay long jacket inside short jacket, with right side facing wrong side, and baste together along armhole edges.

Stitch sleeve seams. Press sleeve hems to inside. Stitch hems in place from right side, with the twin needle, 4 cm (1 5/8 ins) from lower edges.

Set in sleeves.

