

### 110 Dress

Burda sizes 36, 38, 40, 42, 44

Length from waist 57 cm (22 1/2 ins)

### Materials

Lightweight sweatshirt fabric,  
width: 150 cm (59 ins)  
length: 1.30 – 1.35 – 1.35 – 1.35 – 1.35 m  
(1 1/2 – 1 5/8 – 1 5/8 – 1 5/8 – 1 5/8 yds).

Silk satin, as contrasting fabric,  
width: 150 cm (55 ins)  
length: 0.80 m (7/8 yd) for all sizes.

Vilene Bias Tape/ stay tape.

A twin sewing machine needle.

Magic chalk.

Recommended fabrics: Jersey fabrics or sweatshirt fabric. Satin as contrasting fabric.

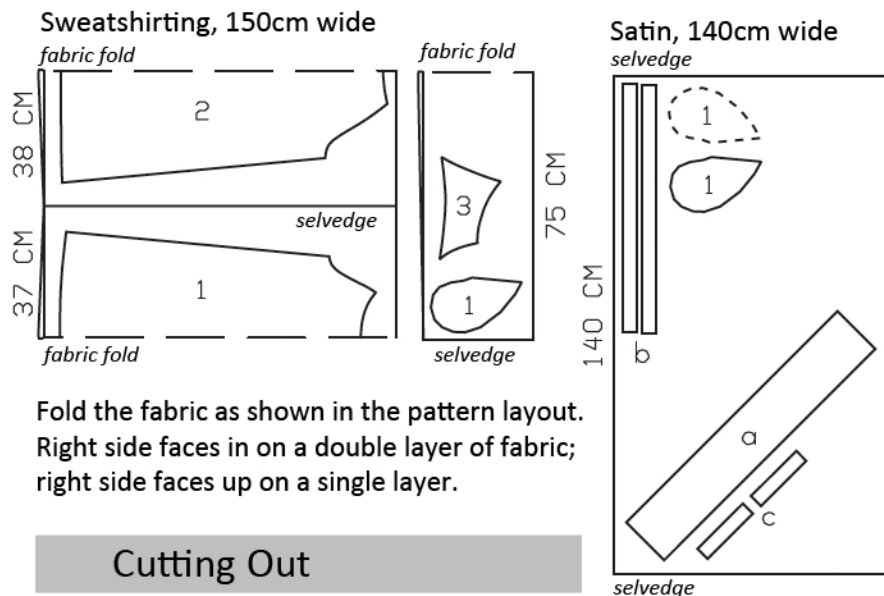
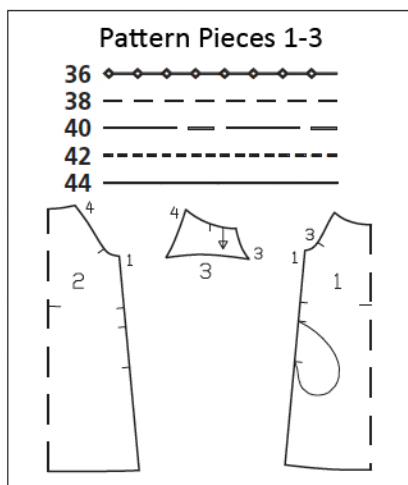
### Preparations

Print the pattern out on letter or A4 sized paper. It is **very** important to not scale the document. Your pattern will print on multiple pages, which you will then tile together. Arrange the sheets on a large, hard and flat surface matching up the numbers and letters (i.e. 6A to 6A). Cut or fold one of the sides and match the edge to it's corresponding side. Then, tape down in place so paper is secure.

Trace the pattern pieces from the pattern sheet following the lines and markings for style 110 and your size. Trace the pocket piece from piece 1 as a separate pattern piece – it is the same for all sizes.

**burda style magazine patterns do not have seam allowance included.**

Seam and hem allowance to be added:  
Seams and edges 1.5 cm (5/8 in), hem 4 cm (1 5/8 ins), sleeve hems 3 cm (1 1/4 ins).



Fold the fabric as shown in the pattern layout. Right side faces in on a double layer of fabric; right side faces up on a single layer.

### Cutting Out

Sweatshirt fabric:

- 1 front, on a fold 1x
- pocket piece 2x
- 2 back, on a fold 1x
- 3 sleeve 2x

Satin:

- 1 pocket piece 2x

Draft the following pieces NOT included in the pattern:

- a) neck band, cut on bias, 84 – 85 – 87 – 88 – 89 cm (33 – 33 1/2 – 34 1/4 – 34 3/4 – 35 ins) long, 15 cm (6 ins) wide, finished width 7.5 cm (3 ins),
- b) drawstring, a total of 140 cm (55 ins) long, 4 cm (1 5/8 ins) wide (incl. allowances),
- c) 2 bias strips for armholes, 18 cm (7 1/8 ins) long, 4 cm (1 5/8 ins) wide (incl. allowances).

Vilene Bias Tape/ stay tape: Iron to wrong sides of front and back neck and armhole edges and of upper sleeve edges.

## Sewing

Stitch side seams, not stitching across pocket openings. Sew inseam pockets, see style 127. Stitch satin pocket pieces to pocket opening edges of front and stitch jersey pocket pieces to back.

Press sleeve hem allowances to inside. Work from outer side of sleeve to stitch each hem in place with the twin machine needle, stitching 2 cm (3/4 in) from lower edge. Stitch sleeves to front and back (seam numbers 3 and 4). Fold bias strips for armholes in half lengthwise, right side facing out, and press. Pin folded bias strips to armhole edges, beneath sleeves, so that fold edge of each strip lies on garment piece, 1 cm (3/8 in) past seam line, and ends of strip lie on lower sleeve edge. Stitch along marked armhole lines. Trim seam allowances. Turn bias strips to inside and press. Press allowances of sleeve attachment seams onto front and back. Topstitch 7 mm (1/4 in) from each armhole edge, below sleeve, stitching horizontally to lower sleeve edge.

**Neck band:** Stitch narrow edges of neck band together (= centre back seam). Press seam allowances open. Mark centre front opposite the seam. Fold band in half lengthwise, wrong side facing in, and press. Unfold band again. Use vanishing chalk to mark a 3 cm (1 1/4 in) wide casing on outer band half, 1.5 cm (5/8 in) below fold edge, beginning and ending 5 cm (2 ins) from centre front. At beginning and end of casing, work one vertical buttonhole, for the drawstring. Before doing this, baste pieces of interfaced fabric to wrong side, as reinforcement. Fold band in half again. Topstitch band as marked, to form casing. Neaten lower band edges together. On front, sleeves, and back, press allowance on neck edge to inside. Pin neck edge to allowance on lower band edge, matching centre front and back. Topstitch 7 mm (1/4 in) from neck edge.

Turn in ends of drawstring. Fold piece lengthwise, right side facing in. Stitch 1 cm (3/8 in) from fold edge. Turn drawstring right side out and press. Sew ends closed. Pull into casing.



Press hem allowance to inside. Working from outer side of dress, stitch hem with twin machine needle, 3 cm (1 1/4 ins) from lower edge.