

136 Long Jacket

Burda sizes 44, 46, 48, 50, 52

Back length 90 cm (35 1/2 ins)

Materials

Note: On the lower edges of front, back, and sleeves, the stitches of the knit fabric are unravelled, then picked up on a knitting needle and cast off. You will need the yarn of the leftover fabric for this. Unravel the leftover fabric and wind the yarn into a ball. Choose a needle size which matches the weight of the yarn.

Knit mohair fabric,
width: 150 cm (59 ins)
length: 2.25 – 2.25 – 2.30 – 2.30 – 2.30 m
(2 5/8 yds).

Knitting needles in the correct size.

Recommended fabrics: Fine knit fabric. Use only knit fabrics which can be unravelled easily.

Preparations

Diagram:

Follow the diagrams to make full-size pattern pieces for the front (a), the back (b) and the sleeve (c).

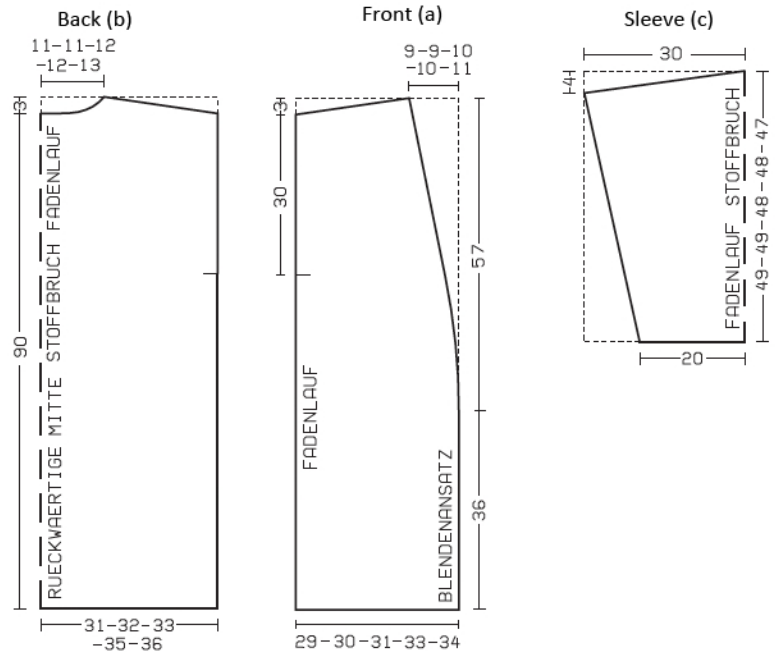
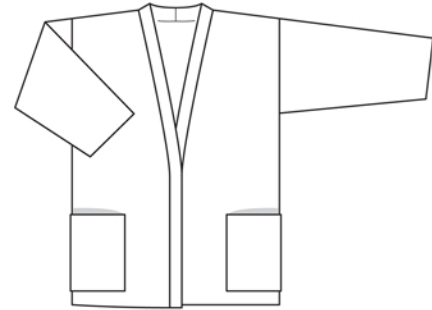
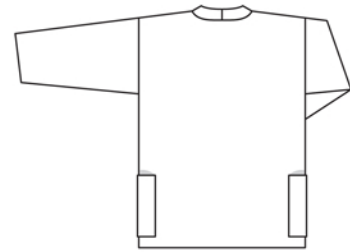
Add seam and hem allowances:

Seams and edges 1.5 cm (5/8 in), hem and sleeve hems 1.5 cm (5/8 in).

Cutting Out

- front from diagram 2x,
- back from diagram 1x, on a fold,
- sleeve from diagram 2x, on a fold,
- 2 band pieces, 104 – 105 – 105 – 105 – 106 cm (41 – 41 1/2 – 41 1/2 – 41 1/2 – 41 3/4 ins) long, 10 cm (4 ins) wide, finished width 5 cm (2 ins),
- 2 pockets, 48 cm (19 ins) long, finished length 24 cm (9 1/2 ins), 24 cm (9 1/2 ins) wide.

Lay pattern pieces on knit fabric as shown in the pattern layout. Place lower edge of each pattern piece along a row of knit stitches. Cut out pieces, adding seam and hem allowances. Unravel stitches of remaining fabric and wrap the yarn into a tight ball to smooth it out.



Sewing

Stitch shoulder seams. Neaten seam allowances together and press forward.

Stitch centre back seam on band pieces for front and neck edges. Press seam allowances open. Stitch outer half of band to front and neck edges, beginning and ending at marked hem line. Press seam allowances onto band. Fold band half to inside and press. Turn inside band edge under, over attachment seam, and baste. Working from outside, stitch along attachment seam, thereby catching inner edge of band.

On lower edge of each sleeve, unravel stitches up to hem line. Pick up stitches with a knitting needle and cast off loosely. Stitch sleeves to front and back pieces, between seam marks. At end of seam, turn extending sleeve seam edges back and pin. Stitch side seams from sleeve attachment seam to lower edge, ending stitching at marked hem line. Remove pins from sleeves. Stitch sleeve seams. Sew seam allowances to lower sleeve edges by hand.

On lower jacket edge, unravel stitches up to hem line. Pick up stitches with a knitting needle and cast off loosely, on the band casting off stitches of outer and inner halves together.

Fold each pocket to half the length, right side facing in. Stitch edges together, leaving a section of seam open, for turning. Turn pocket right side out and sew seam opening closed. To give upper pocket edge (fold edge) a firmer edge, pick up stitches with the knitting needle through both layers of fabric then cast off. Pin the pockets to the jacket, 4 cm (15/8 ins) above hem edge and 15 – 15 – 17 – 19 – 19 cm (6 – 6 – 6 3/4 – 7 1/2 – 7 1/2 ins) from band attachment seam. Sew side and lower edges of pockets in place with invisible stitches, by hand.

