

133B Dress

Burda sizes 44, 46, 48, 50, 52

Length from waist 62 cm (24 1/2 ins)

Materials

Note: For this dress, the main fabric was also used as lining. The sleeves are not lined.

Linen lawn,
width: 140 cm (55 ins)
length: 3.80 m (4 1/4 yds) for all sizes.

Vilene Bias Tape/ stay tape.

Elastic, 7 mm (1/4 in) wide and 0.60 m (3/4 yd) long.

Recommended fabrics: Lightweight dress fabrics.

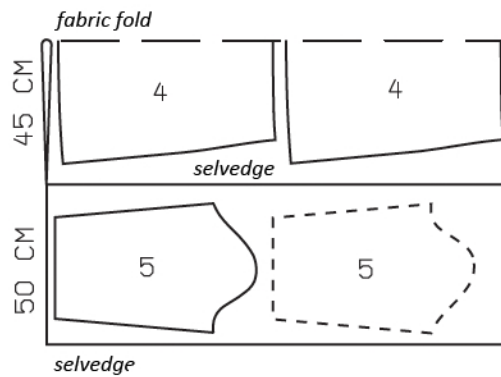
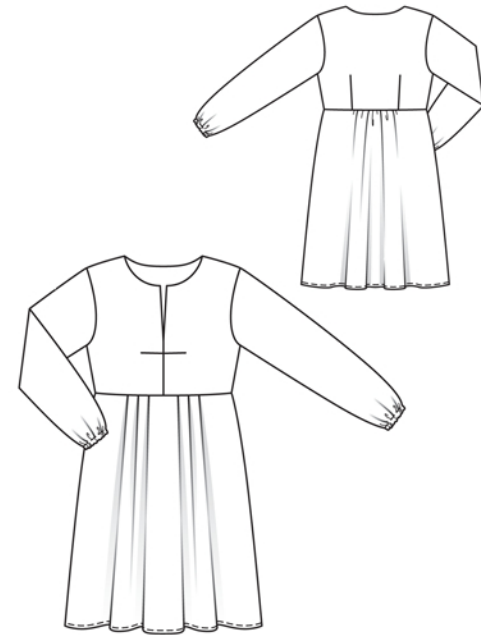
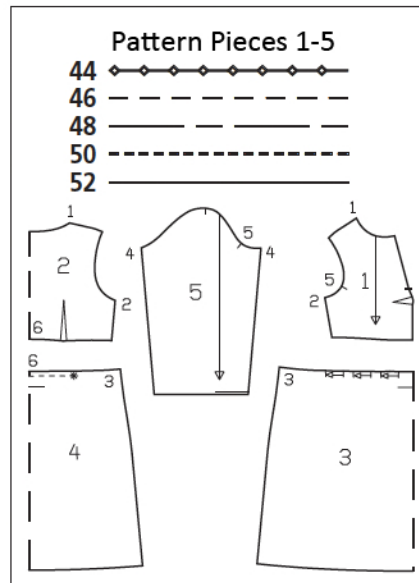
Preparations

Print the pattern out on letter or A4 sized paper. It is **very important** to not scale the document. Your pattern will print on multiple pages, which you will then tile together. Arrange the sheets on a large, hard and flat surface matching up the numbers and letters (i.e. 6A to 6A). Cut or fold one of the sides and match the edge to its corresponding side. Then, tape down in place so paper is secure.

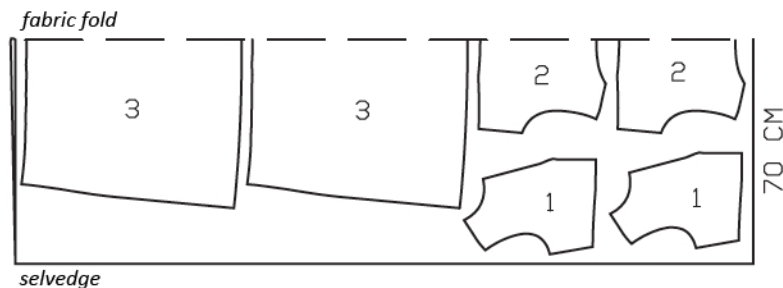
Trace the pattern pieces from the pattern sheet. Follow lines and details for style 133 B.

burda style magazine patterns do not have seam allowance included.

Seam and hem allowance to be added:
Seams, edges and hem 1.5 cm (5/8 in), sleeve hems 2 cm (3/4 in).



Fold the fabric as shown in the pattern layout. Right side faces in on a double layer of fabric. Right sides faces up on a single layer of fabric. Cut right and left sleeves as opposites.



Cutting Out

- 1 front 2x
and for lining 2x
- 2 back, on a fold 1x
and for lining 1x
- 3 front skirt piece, on a fold 1x
and for lining 1x
- 4 back skirt piece, on a fold 1x
and for lining 1x
- 5 sleeve 2x

Vilene Bias Tape/ stay tape: Iron to wrong side of neck and front slit edges of lining pieces.

Sewing

Stitch darts in front and back pieces. Press bust darts down. Press back darts toward centre.

Stitch shoulder seams. Press seam allowances open.

Stitch darts and shoulder seams of lining. Lay lining on bodice, right sides facing, and pin in place. Stitch together along front edges above slit mark and along neck edge. Trim seam allowances, trimming corners diagonally. At end of slit, turn lining up. Stitch centre front seam of main fabric. Then stitch centre seam of lining. Stitch side seams on main fabric and lining. Press seam allowances open. Turn lining to inside and press edges.

Lay pleats in skirt front in direction of arrows and baste. Gather upper edge of skirt between asterisks. Stitch side seams of skirt. Sew skirt lining in same manner.

Stitch skirt to bodice, right sides together. Stitch skirt lining to bodice, with right side facing wrong side. Press seam allowances up. Baste lining to armhole edges.

Stitch sleeve seams, leaving seam open below hem line, to insert elastic. Turn sleeve hem allowances to inside and baste. Stitch from right side as marked. Pull elastic into lower edge of each sleeve. Sew ends of elastic together to a circumference of 24 – 24 – 25 – 25 – 26 cm (9 1/2 – 9 1/2 – 10 – 10 – 10 1/4 ins).

Set in sleeves.

Press hem allowance to inside, turn half in, and stitch. Turn hem allowance of lining to wrong side and stitch.

