

132 Fake Fur Vest

Burda sizes 44, 46, 48, 50, 52

Back length approx. 75 cm (30 ins)

Materials

Fake fur,
width: 150 cm (59 ins)
length: 0.85 m (1 yd) for all sizes.

Jersey, for lining,
width: 140 cm (55 ins)
length: 0.85 m (1 yd).

Recommended fabrics: Fake fur.

Preparations

Follow the diagrams to make full-size pattern pieces for the front (a) and the back (b).

Add seam and hem allowances:
Seams and edges 1.5 cm (5/8 in), hem 4 cm (1 5/8 ins), lining 1.5 cm (5/8 in).

Cutting Out

Fake fur:
a) front from diagram 2x
b) back from diagram 1x, on a fold

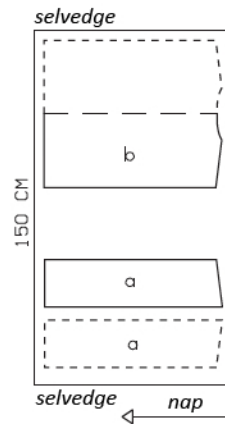
Jersey (lining): pieces a and b.

Sewing

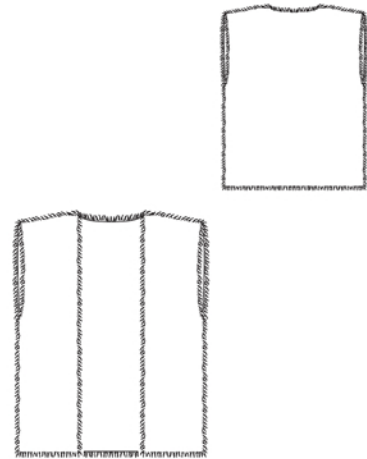
Note: When stitching seams, push fur hairs away from seam toward the garment piece.

Stitch shoulder seams on waistcoat and lining pieces. Press seam allowances open.

Pin the lining right sides together with the waistcoat. Turn the hem allowance of the waistcoat to the outside. Beginning at each front edge, stitch hem allowance to lower edge of lining, right sides facing, approx. 10 cm (4 ins) long. Pin hem allowance and lining to front edges, turning extra length of lining down like a fold and pinning it under the hem allowance. Stitch along front and neck edges. Stitch armhole edges together between the seam marks. Trim seam allowances and clip allowances at seam marks. Turn the waistcoat right side out by pulling the fronts into the back through the shoulder "tunnels".

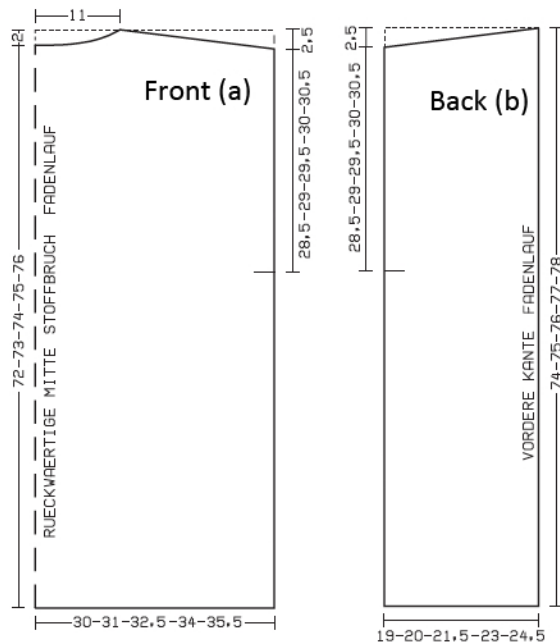


Cut fake fur from a single layer of fabric, wrong side facing up. When cutting out the pieces, cut only the backing fabric and not the hairs of the fur. Note direction of nap.



Diagrams

Measurements in cm



Lay the fronts on the back, right sides facing, turning lining up. Stitch side seams of main fabric and of lining.

Turn the hem allowance to the inside and sew in place by hand. Turn lining edge under and sew to the hem allowance by hand. Turn extra length of lining down and press.

To prevent the lining from showing on the front, neck, and armhole edges, sew main fabric and lining together with small stitches by hand, approx. 1 cm (3/8 in) from these edges.