

131 Vest

Burda sizes 44, 46, 48, 50, 52

Back length approx. 48 cm (19 ins),
front length approx. 80 cm (31 1/2 ins)

Materials

Stretch nappa leather. To make this style in size 44, you will need 5 leather skins with a total of approx. 40 sq. ft. (1 sq. ft. = 30 x 30 cm). Please ask your leather dealer about larger sizes since leather skins can vary greatly. We recommend you take the paper pattern with you when purchasing the leather.

Lining,

width: 150 cm (55 ins)

length: 0.80 – 0.80 – 0.85 – 0.90 – 0.90 m
(7/8 – 7/8 – 1 – 1 – 1 yd).

Leather interfacing.

1 separating two-way zip, 65 – 65 – 70 – 70 – 70 cm (26 – 26 – 28 – 28 – 28 ins) long.

2 metal zips, 16 cm (7 ins) long.

Recommended fabrics: Soft stretch leather or imitation leather.

Preparations

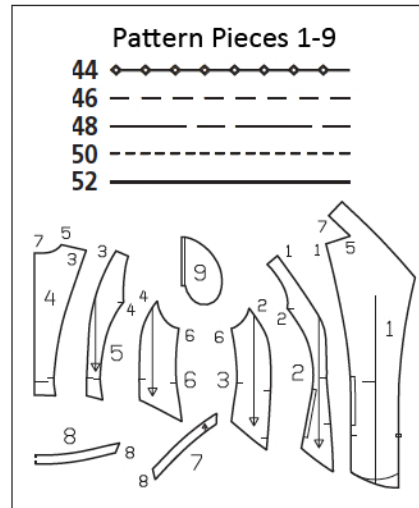
Print the pattern out on letter or A4 sized paper. It is **very important** to not scale the document. Your pattern will print on multiple pages, which you will then tile together. Arrange the sheets on a large, hard and flat surface matching up the numbers and letters (i.e. 6A to 6A). Cut or fold one of the sides and match the edge to its corresponding side. Then, tape down in place so paper is secure.

Trace the pattern pieces from the pattern sheet. Note different lines for right and left edges of hem on piece 1. The line for the zip on pieces 1 and 2 is marked for size 44. For sizes 46 – 52, remark the line at the same width.

burda style magazine patterns do not have seam allowance included.

Seam and hem allowance to be added:

Seams and edges 1.5 cm (5/8 in).



Cutting Out

Nappa leather:

1 centre front with collar 2x

and as facing with collar 2x

2 middle front piece 2x

3 side front 2x

4 centre back 2x

5 middle back piece 2x

6 side back 2x

7 front hem facing 2x

8 back hem facing, on a fold 1x

9 pocket piece 1x

– 1 facing strip, 20 cm (8 ins) long, 5 cm (2 ins) wide (incl. allowances).

Lining: pieces 2, 3, 5, and 6; piece 4, on a fold at centre back; piece 9 to lining line; and 2 facing strips for zip slits, each 20 cm (8 ins) long, 5 cm (2 ins) wide (incl. allowances).

Interfacing: Iron to wrong side of facing and collar pieces.

Sewing

Zip openings: Pin facing strips of lining fabric to right centre front and right middle front piece, over marked zip lines (rectangular opening), right sides together. Work from wrong side to stitch along marked lines – stitching to edge of seam allowance on horizontal lines. Trim allowances and clip into corners. Turn facing strips to inside and press opening edges. Lay zips under faced edges so that zip teeth are visible and so that the second zip tape extends, as seam allowance. Edgestitch zips in place.

On right front, stitch section seams (seam numbers 1 and 2). Press seams open. Topstitch close to each side of each seam.

Only the opening in the side front section seam is constructed as an actual pocket. The second (front) opening is a mock pocket, under which only a facing strip is stitched. At side opening, stitch pocket lining piece to front zip tape and press it forward. Stitch pocket piece of leather to side zip tape. Stitch pocket pieces together. Lay facing strip of leather under front opening. Stitch the zip tapes to the facing strip.

Separate the separating zip. Lay the left half of the zip on the section seam edge of the left centre front, above the seam mark. For sizes 48 – 52, zip extends past shoulder seam edge. Trim the extending zip tape with seam allowance and remove teeth of zip to 5 mm (3/16 in) below shoulder seam line. Lay the right half of the zip on the front edge of the right front, above the slit mark, and shorten the zip to 5 mm (3/16 in) below neck edge.

Lay left half of zip face up on section seam edge of left centre front, above seam mark, so that teeth of zip lie on garment piece, next to seam allowance. Stitch zip tape to seam allowance. Stitch left middle front piece to left centre front. Clip the seam allowance of centre front at bottom end of zip. Press the seam allowances onto the middle front piece the length of the zip, press seam allowances open below the zip. Topstitch middle piece close to seam. Topstitch centre front close to seam below zip.

Stitch left side front to left middle front piece. Topstitch close to each side of seam. Turn in top end of right zip tape. Lay right half of zip face down on right front edge (right side of leather), above slit mark, so that teeth of zip lie on garment piece, next to seam line. Stitch zip tape to seam allowance.

Stitch centre back seam and back section seams. Topstitch close to each side of each seam. Stitch shoulder seams – beginning exactly at corner (seam number 5). Clip allowances of fronts into each corner between shoulder and collar, close to end of stitching. Press seam allowances open. Topstitch close to each side of each seam.

Stitch centre back seam on integrated collar pieces on centre fronts. Topstitch close to each side of seam. Stitch the collar to back neck edge, from corner to corner. Press allowances of collar attachment seam open.

On lining pieces, stitch section seams (seam numbers 2, 3, and 4). Stitch front lining pieces to front facings, leaving approx. 8 cm (3 1/4 ins) open at bottom. Stitch shoulder seams – beginning exactly at corner. On the facings, clip the seam allowance into each corner between the shoulder and the collar. Press the seam allowances open. Stitch the centre back seam on the integrated collar pieces of the facings. Topstitch close to each side of seam. Stitch the collar to back neck edge. Press seam allowances onto lining.

Pin facings and lining right sides together with the waistcoat and pin the collar edges together. Stitch along front hem edges, beginning and ending 4 cm (1 5/8 ins) before the inside facing edge, then stitch along the front edges and collar edge, catching the zip at right front edge. Stitch the lining to the armhole edges. Trim the seam allowances, trimming corners diagonally. Clip allowances along curves several times. Turn waistcoat right side out by pushing fronts back through the shoulder “tunnels” then pulling them out through an open side seam.

Pin the back collar attachment seams together. Reach between the leather and the lining to pull out the pinned-together collar attachment seams. Stitch the seam allowances together, close to the collar attachment seam. Push the edges back in place again.

At each armhole edge, turn the lining up again. Stitch side seams on leather and on lining as continuous seams. Topstitch close to each side of each seam on leather. Stitch the side seams of the hem facings (seam number 8). Topstitch seams. At lower edge of waistcoat, turn the front facings out onto the fronts again. Stitch the hem facing to the inside edge of the front facings. Then stitch the front facings and hem facing to the lower edge of the waistcoat. Turn the facings to the inside. Topstitch 3 cm (1 1/4 ins) from the hem edge, not catching the lining. Above the hem, pin a fold, approx. 1 cm (3/8 in) deep, in the lining. Turn lining edge under and sew to the hem facing. Turn the extra length down and press. Sew the remaining front lining edges in place. Topstitch close to front edges and collar edge. Topstitch twice from each armhole edge, spaced 7 mm (1/4 in) apart.