

129 Jacket

Burda sizes 44, 46, 48, 50, 52

Back length approx. 85 cm (33 1/2 ins)

Materials

Jersey,
width: 140 cm (55 ins)
length: 2.45 – 2.50 – 2.55 – 2.60 – 2.65 m
(2 3/4 – 2 3/4 – 2 7/8 – 2 7/8 – 3 yds).

A twin sewing machine needle.

Recommended fabrics: Jersey.

Preparations

Print the pattern out on letter or A4 sized paper. It is **very important** to not scale the document. Your pattern will print on multiple pages, which you will then tile together. Arrange the sheets on a large, hard and flat surface matching up the numbers and letters (i.e. 6A to 6A). Cut or fold one of the sides and match the edge to its corresponding side. Then, tape down in place so paper is secure.

Trace the pattern pieces from the pattern sheet. Follow lines and details for style 129.

burda style magazine patterns do not have seam allowance included.

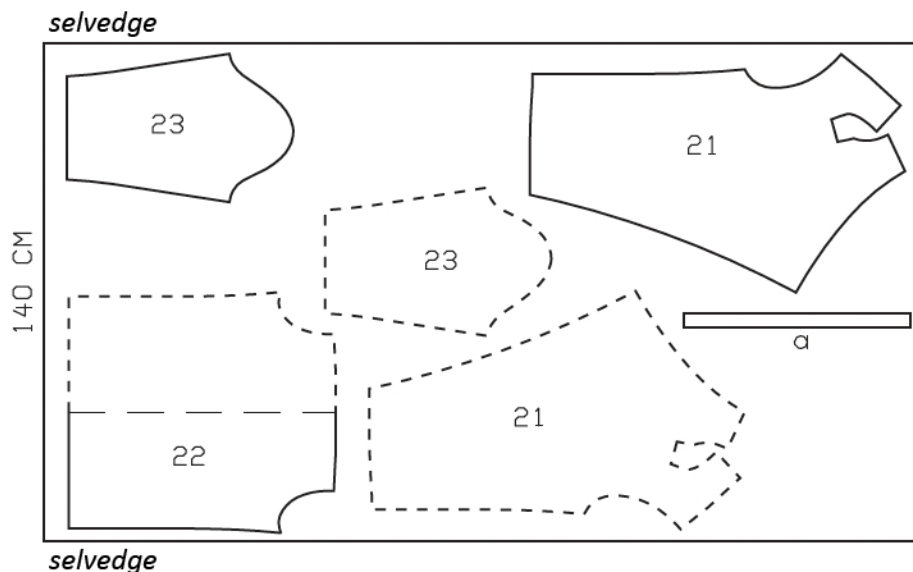
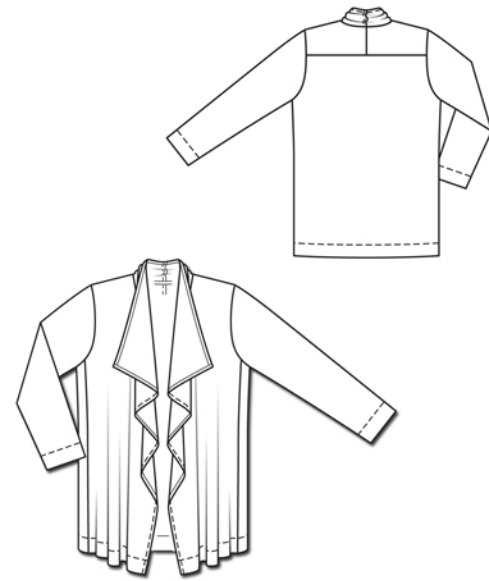
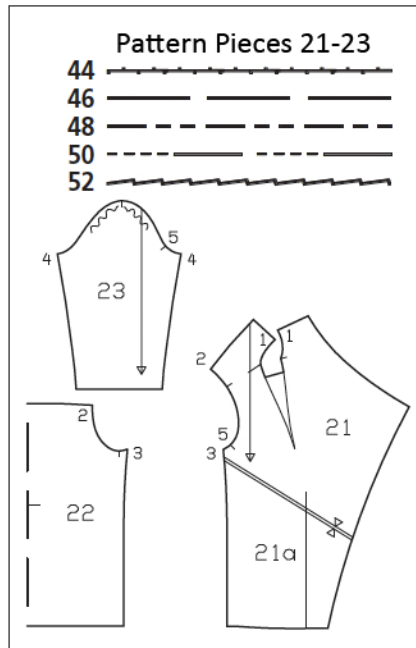
Seam and hem allowance to be added:
Collar attachment seam for size 44, 5 mm (3/16 in), for other sizes 7 mm (1/4 in); centre back seam (yoke and collar) 7 mm (1/4 in); all other seams 1.5 cm (5/8 in), hem and sleeve hems 6 cm (2 3/8 ins) (flare sleeve hem allowance).

Cutting Out

21 front with integrated back yoke and collar 2x
22 back, on a fold 1x
23 sleeve 2x

Draft the following piece:

a) facing strip for collar attachment seam, 60 – 65 – 65 – 70 – 75 cm (23 3/4 – 25 1/4 – 25 1/4 – 27 3/4 – 29 3/4 ins) long, 4 cm (1 5/8 ins) wide (incl. allowances).



Cut from a single layer of fabric, right side facing up. Pieces shown with a broken outline should be placed on the fabric with their printed side facing down.

Sewing

Note: Stitch seams on stretch fabrics with a special stretch stitch or at a narrow zigzag setting. Stitch hems with a twin sewing machine needle to keep them elastic.

Stitch centre seam of back yoke. Neaten seam allowances together and press to one side.

Sew centre back collar seam as a flat-felled seam: Stitch seam. Press seam allowances to one side. Trim seam allowance which lies underneath to 5 mm (3/16 in). Turn under edge of seam allowance which lies on top and baste. Work from right side to stitch 7 mm (1/4 in) from seam.

Beginning at centre back, stitch collar to neck edge, right sides facing, then continue stitching along dart. Trim dart allowances to width of seam allowance. Fold facing strip in half lengthwise and press. Mark centre of facing strip. Work from collar side to pin folded facing strip to seam allowances of collar attachment seam, matching centres, then continue and pin to darts. Then stitch along line of previous stitching. Press facing strip and seam allowances onto back yoke, and press strip with darts to the side. Work from outside of jacket to topstitch 7 mm (1/4 in) from seam, tapering stitching toward ends of darts.

Stitch back yoke to back. Press seam allowances onto yoke. Stitch side seams (seam number 3). Press seam allowances to one side.

Press hem allowance to inside. Stitch hem in place with the twin needle, from the right side, stitching 5 cm (2 ins) from lower edge.

On front edges and on collar edge, turn allowance to inside, turn raw edge under, and stitch 7 mm (1/4 in) from edge.

Stitch sleeve seams. Press sleeve hem allowances to inside and stitch in place with the twin needle.

Set in sleeves, easing sleeve caps and matching sleeve seam to seam mark on back.

