

128 Coat

Burda sizes 44, 46, 48, 50, 52

Back length approx. 107 cm (42 ins)

Materials

Sequin fabric,

width: 125 cm (49 ins)

length: 3.05 – 3.05 – 3.05 – 3.45 – 3.45 m

(3 1/2 – 3 1/2 – 3 1/2 – 3 7/8 – 3 7/8 yds).

Fine jersey, for lining,

width: 160 cm (63 ins)

length: 2.40 – 2.40 – 2.45 – 2.50 – 2.55 m

(2 5/8 – 2 5/8 – 2 3/4 – 2 3/4 – 2 7/8 yds).

Cotton bias tape, pre-folded 2 cm (3/4 in) wide and 6.40 – 6.50 – 6.50 – 6.60 – 6.60 m (7 – 7 1/8 – 7 1/8 – 7 1/4 – 7 1/4 yds) long.

Recommended fabrics: Lightweight sequin fabrics. Fine cotton jersey for lining.

Preparations

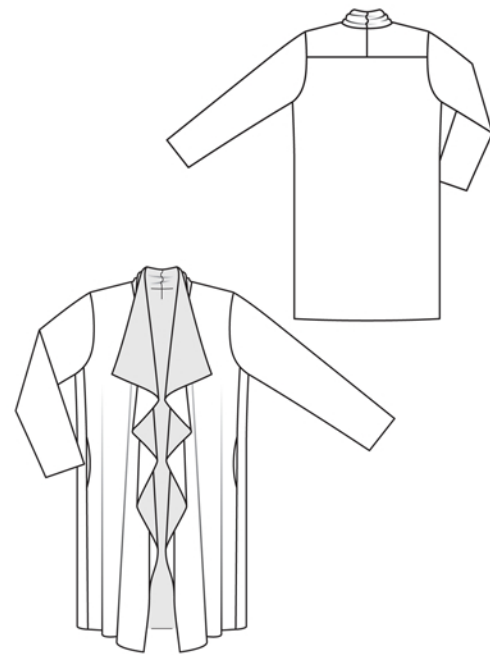
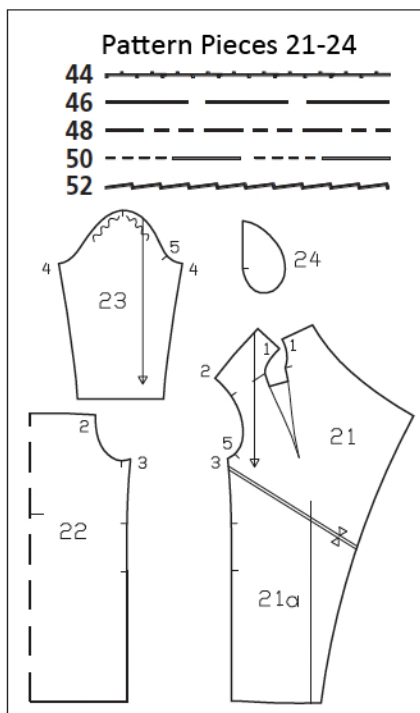
Print the pattern out on letter or A4 sized paper. It is **very important** to not scale the document. Your pattern will print on multiple pages, which you will then tile together. Arrange the sheets on a large, hard and flat surface matching up the numbers and letters (i.e. 6A to 6A). Cut or fold one of the sides and match the edge to its corresponding side. Then, tape down in place so paper is secure.

Trace the pattern pieces from the pattern sheet. Follow the lines and details for style 128t.

burda style magazine patterns do not have seam allowance included.

Seam and hem allowance to be added:

Collar attachment seam for size 44, 5 mm (3/16 in), for other sizes 7 mm (1/4 in); centre back seam (yoke and collar) 7 mm (1/4 in); all other seams and edges 1.5 cm (5/8 in).



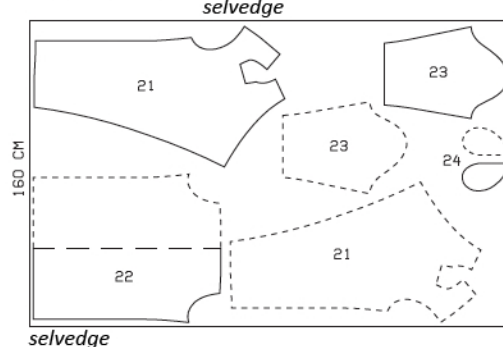
Lining, 160cm wide

Sizes 44, 46

fabric fold



Sizes 48-52



selvedge

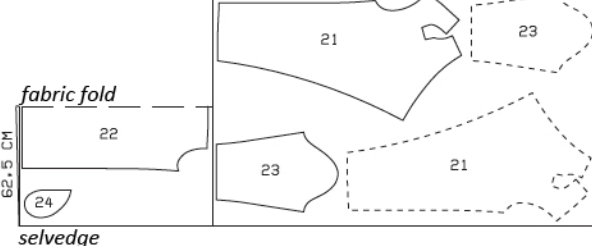
selvedge

selvedge

Right side faces in on a double layer of fabric. Right sides faces up on a single layer of fabric. Cut right and left pieces as opposites.

Sequin, 125cm wide

Sizes 44-52



selvedge

fabric fold

selvedge

Cutting Out

Sequin fabric:

21 front with integrated back yoke

and collar 2x

22 back, on a fold 1x

23 sleeve 2x

24 pocket piece 2x

Jersey (lining):

pieces 21 to 24.

Sewing

Stitch centre back seams of integrated back yoke and collar pieces on coat and on lining. Press seam allowances open.

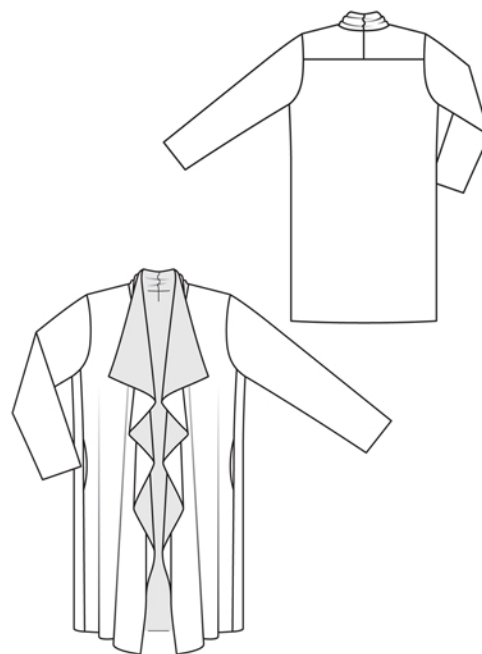
Lay lining fronts and back on corresponding pieces of main fabric, right sides together, and pin. On the fronts, stitch along hem edge, front edge, and edge of collar. On back, stitch along hem edge. Trim seam allowances, trimming corners diagonally. Turn lining to inside. Press seamed edges. Baste lining to wrong side of main fabric and treat as one layer of fabric from now on.

Beginning at centre back, stitch collar to neck edge, right sides facing, then continue stitching along dart. Trim dart allowances. Bind allowances together with bias tape. Press allowances of collar attachment seam onto back yoke and press darts toward the side.

Stitch back yoke to back. Bind seam edges.

Stitch side seams, not stitching across pocket openings. Stitch pocket pieces to pocket opening edges between markings, right sides facing – pocket lining pieces in front and fabric pocket pieces in back. Clip seam allowances of back at pocket opening ends. Press side seam allowances onto front. Stitch pocket pieces together and bind edges with bias tape. Bind side seam allowances with bias tape. Sew bottom ends of seam allowances in place.

Stitch seams on sleeves and sleeve linings. Pull sleeve linings over sleeves, right sides facing, and stitch to lower edges. Trim seam allowances. Turn lining to inside, press edges. Baste lining to wrong side of upper sleeve edges.



Set in sleeves, easing sleeve caps and matching sleeve seam to seam mark on back. Bind allowances of sleeve attachment seams.