

125 Tunic

Burda sizes 36, 38, 40, 42, 44

Back length approx. 75 cm (30 ins)

Materials

Sequin fabric,
width: 120 cm (47 ins)
length: 1.50 – 1.50 – 1.50 – 1.70 – 1.70 m
(1 3/4 – 1 3/4 – 1 3/4 – 1 7/8 – 1 7/8 yds).

Chiffon for lining,
width: 150 cm (59 ins)
length: 0.45 m (5/8 yd) for all sizes.

Recommended fabrics: Sequin fabric.

Preparations

Print the pattern out on letter or A4 sized paper. It is very important to not scale the document. Your pattern will print on multiple pages, which you will then tile together. Arrange the sheets on a large, hard and flat surface matching up the numbers and letters (i.e. 6A to 6A). Cut or fold one of the sides and match the edge to its corresponding side. Then, tape down in place so paper is secure.

Trace the pattern pieces from the pattern sheet.

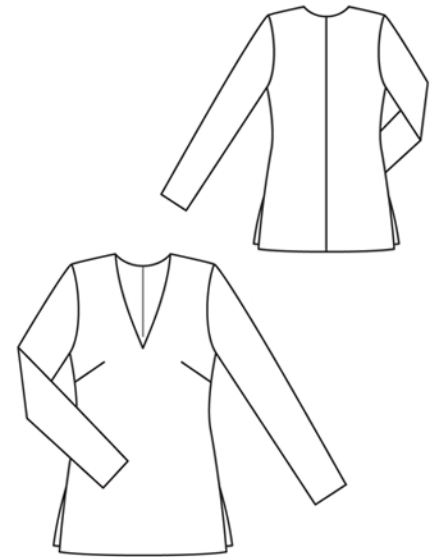
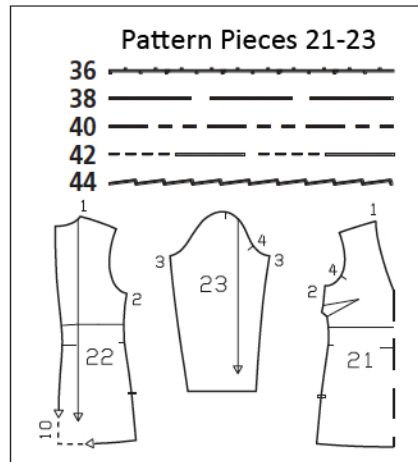
burda style magazine patterns do not have seam allowance included.

Seam and hem allowance to be added:
Seams and edges 1.5 cm (5/8 in), no allowances on hem or sleeve hem edges. Cut lining pieces with 1.5 cm (5/8 in) wide seam and hem allowances.

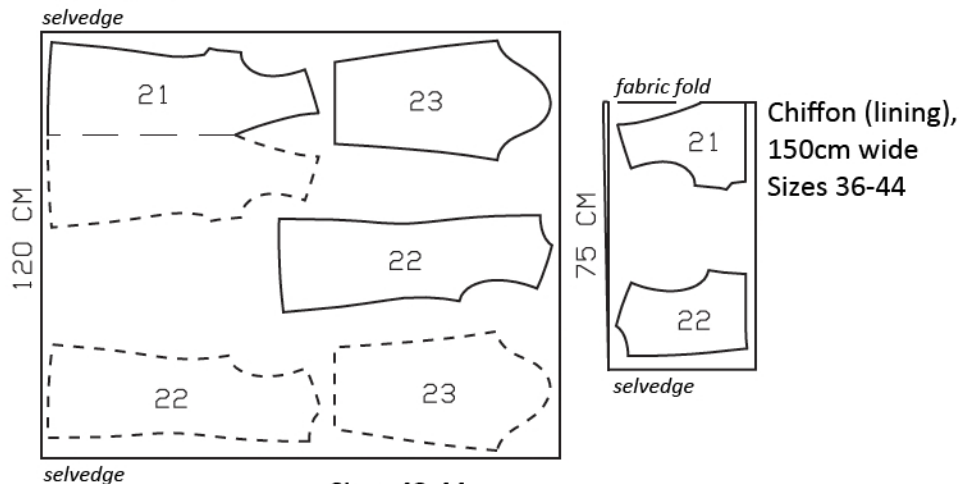
Cutting Out

Sequin fabric:
21 front, on a fold 1x
22 back 2x
23 sleeve 2x

Chiffon (lining):
Cut pieces 21 and 22 up to lining line.



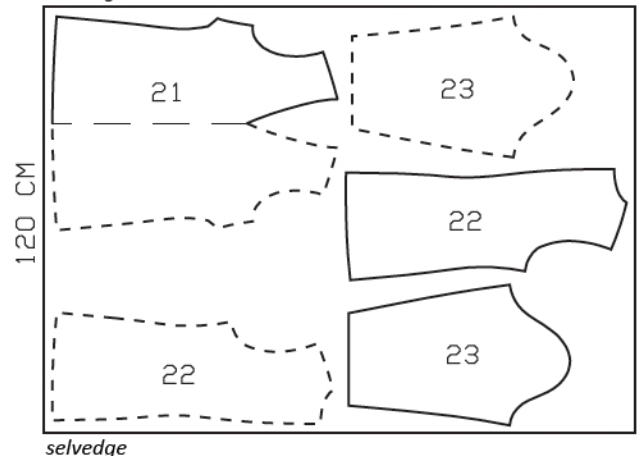
Sequin, 120cm wide
Sizes 36-40



Chiffon (lining),
150cm wide
Sizes 36-44

Sizes 42,44
selvedge

Cut sequin fabric from a single layer, wrong side facing up. Pieces shown with a broken outline should be placed on the fabric printed side facing down. Cut lining pieces from a double layer of fabric, right side facing in.



Sewing

Stitch bust darts. Press darts down.

Stitch centre back seam. Press seam open.
Stitch side seams, leaving slits open. Press slit allowances to inside and sew in place by hand.

Stitch shoulder seams.

Stitch darts and seams of lining. Neaten seam allowances together and press to one side. Turn lining hem allowance to wrong side, turn raw edge under, and stitch in place.

Lay lining on tunic, right sides facing, and pin to neck edge. Stitch along neck edge. Trim seam allowances and clip allowances into corner. Turn lining to inside and baste to armhole edges. To prevent lining from showing on neck edge, sew main fabric and lining together, close to neck edge, with small stitches by hand. Sew lower lining edge to side seams.

Stitch sleeve seams. Neaten seam allowances together and press to one side.

Set in sleeves.

