

124 Leather Skirt

Burda sizes 34, 36, 38, 40, 42, 44

Length from waist 60 cm (23 3/4 ins)

Waistband attachment seam = waist

Materials

Metallic nappa leather. To make this style in size 36, you will need 3 leather skins with a total of approx. 20 sq. ft. (1 sq. ft. = 30 x 30 cm). Please ask your leather dealer about larger sizes since leather skins can vary greatly. We recommend you take the paper pattern with you when purchasing the leather.

Lining,

width: 140 cm (55 ins)

length: 0.70 m (7/8 yd) for all sizes.

Interfacing.

1 invisible zip, 22 cm (9 ins) long.

Textile glue and glue stick.

Recommended fabrics: Soft leather or imitation leather.

Preparations

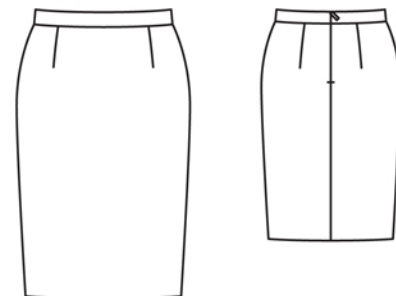
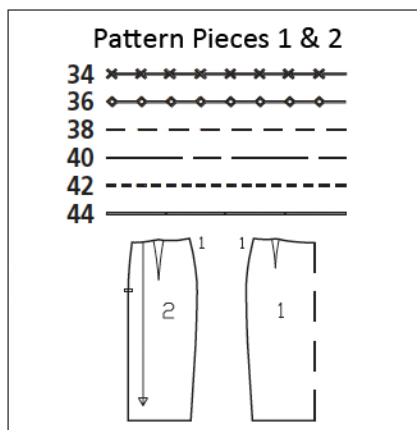
Print the pattern out on letter or A4 sized paper. It is **very** important to not scale the document. Your pattern will print on multiple pages, which you will then tile together. Arrange the sheets on a large, hard and flat surface matching up the numbers and letters (i.e. 6A to 6A). Cut or fold one of the sides and match the edge to its corresponding side. Then, tape down in place so paper is secure.

Trace the pattern pieces from the pattern sheet.

burda style magazine patterns do not have seam allowance included.

Seam and hem allowance to be added:

Seams and edges 1.5 cm (5/8 in, no allowances at hem edges. Cut the lining pieces with 1.5 cm (5/8 in) wide seam and hem allowances.



Cutting Out

Leather:

1 front skirt piece, on a fold 1x

2 back skirt piece 2x

Draft the following piece NOT included in the pattern:

waistband, 64 – 68 – 72 – 76 – 80 – 84 cm (25 1/4 – 26 3/4 – 28 1/2 – 30 – 31 1/2 – 34 ins) long, 7 cm (3 ins) wide, finished width 3.5 cm (1 1/2 ins).

Lining:

pieces 1 and 2.

Interfacing: Iron to wrong side of waistband. Iron strips of interfacing, approx. 2 cm (3/4 in) wide, to wrong side of zip slit edges.

Sewing

Notes on working with leather (or imitation leather): Use a fine needle and fine sewing thread to stitch leather. Avoid basting leather and unpicking seams since the holes left by the needle may be permanent. Use a medium stitch length. Stitches which are too short may split the leather. Should your sewing machine not transport the leather properly, use a Teflon-coated presser foot or stitch over a piece of tissue paper. Tear away the paper after stitching. Press leather from the wrong side (cover with a dry pressing cloth), with moderate heat, and without steam. Test-iron a scrap of leather first.

Stitch front and back darts. Cut darts open along the centre, spread allowances open, and glue down (textile glue). Press points of darts flat.

Stitch side seams. Trim bottom ends of seam allowances at angles. Spread seam allowances open and glue down.

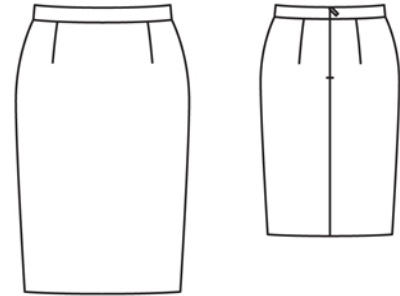
Fold waistband in half lengthwise, wrong side facing in. Press upper waistband edge. Unfold waistband again. Trim away seam allowance on long edge of outer waistband half. Glue outer waistband half to seam allowance on upper skirt edge, with wrong side facing right side (glue stick).

Sewing Continued...

Sew invisible zip to outer waistband and to back slit edges, see the "Helpful Hint" on next page. Stitch centre back seam from lower edge to zip. Trim bottom end of seam allowances at angles. Spread seam allowances open and glue down (textile glue).

Sitch darts and seams of lining, leaving slit open for zip. Place lining inside skirt, with wrong sides facing. Glue to seam allowances of waistband attachment seam (glue stick). Turn edges under and sew to zip tapes. Lay inside waistband edge flat over attachment seam, not turned under. Work from outer side of skirt to topstitch close to lower waistband edge, catching inside edge. Trim seam allowance of inside waistband edge close to stitching.

Turn lining hem allowance to wrong side and stitch in place so that lining is 2 cm (3/4 in) shorter than skirt.





These special zippers come in various lengths. The zipper should be at least 2 cm (3/4 in) longer than the slit. It is sewn in place before the seam below the slit is stitched. A special presser foot is required to sew the zipper in place.

Sewing the zipper in place:

Open the zipper and push the coil back with your thumbnail to reveal the seam marking between the tape and the coil. Place the open zipper right side down on the right fabric side of one slit edge.

In order to stitch the zipper in place exactly along the marked seam line, you must first calculate the distance between the tape edge and the fabric edge as follows: width of seam allowance minus 1 cm (3/8 in) tape width = distance from edge of fabric. This will yield a value of 5 mm (3/16 in) if the width of the seam allowance is 1.5 cm (5/8 in).

Pin the top end of the zipper tape in place, the calculated distance from the edge of the fabric. The bottom end of the zipper will extend past the marked end of the slit. Place the presser foot on the zipper so that the coil is in the notch to the right of the needle (1). Stitch zipper in place, from the top to the marked end of the slit. Close zipper.

Place the other zipper tape face down on the opposite slit edge and pin in place at the top. Open zipper again. Place the presser foot on the top end of the zipper so that the coil is in the notch to the left of the needle (2). Sew the zipper in place, from the top to the end of the slit. Close zipper.

Now stitch the seam below the zipper, from bottom to top. Turn the loose lower end of the zipper out of the way, over the seam allowance. Stitch as close as possible to the last stitches of the zipper seams. Trim away excess zipper and bind the end with a scrap of fabric.