

123A Top

Burda sizes 34, 36, 38, 40, 42

Back length: approx. 72 cm (28 1/2 ins)

Materials

Jersey,
width: 150 cm (59 ins)
length: 1.00 – 1.00 – 1.00 – 1.00 – 1.10 m
(1 1/8 – 1 1/8 – 1 1/8 – 1 1/8 – 1 1/4 yds).

Vilene Bias Tape/ stay tape.

A twin sewing machine needle.

Recommended fabrics: Softly draping blouse fabrics.

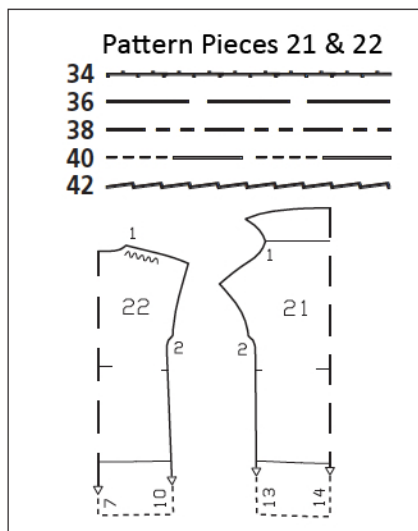
Preparations

Print the pattern out on letter or A4 sized paper. It is **very** important to not scale the document. Your pattern will print on multiple pages, which you will then tile together. Arrange the sheets on a large, hard and flat surface matching up the numbers and letters (i.e. 6A to 6A). Cut or fold one of the sides and match the edge to it's corresponding side. Then, tape down in place so paper is secure.

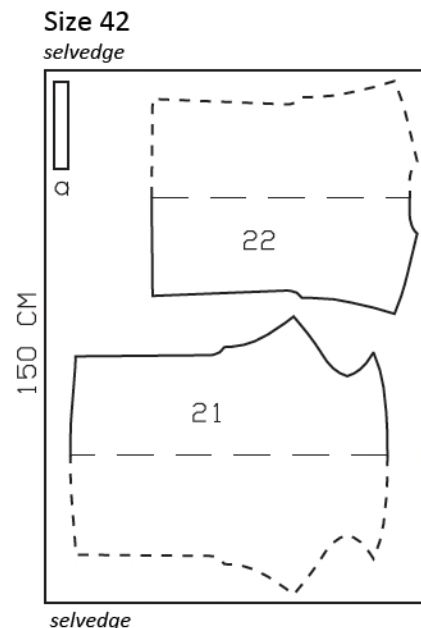
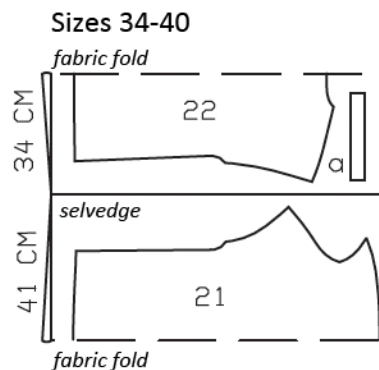
Trace pieces from the pattern sheet. Note different hem lines for views A and B.

burda style magazine patterns do not have seam allowance included.

Seam and hem allowance to be added:
Seams and edges 1.5 cm (5/8 in), armhole edges 2 cm (3/4 in), hem 6 cm (2 3/8 ins)



Right side faces in on a double layer of fabric; right side faces up on a single layer of fabric.



Cutting Out

21 front, on a fold 1x
22 back, on a fold 1x

Draft the following piece NOT included in the pattern:

a) facing strip for back neck edge, 23 – 23 – 24 – 24 – 25 cm (9 1/8 – 9 1/8 – 9 1/2 – 9 1/2 – 10 ins) long, 4 cm (1 5/8 ins) wide (incl. allowances) – cut on straight grain for view A.

Vilene Bias Tape/ stay tape: If you are working with stretch fabric, iron Vilene Bias Tape/ stay tape to wrong sides of front shoulder seam edges, back neck edge, and armhole edges. If you are working with woven fabric, iron Vilene Bias Tape/ stay tape to wrong side of on back neck edge only.

Sewing

Note: Stitch seams on stretch fabrics with a special stretch stitch or at a narrow zigzag setting. Stitch hems with a twin sewing machine needle to keep them elastic.

Fold facing strip for back neck edge lengthwise, right side facing out, and press. Pin folded facing strip to back neck edge so that fold edge of strip lies on garment piece, 1 cm (3/8 in) past seam line. Stitch along marked neck edge. Turn facing strip to inside and press edge. Topstitch 7 mm (1/4 in) from neck edge.

On front piece, neaten allowance on long edge of self-facing.

Pin back shoulder edges to front shoulder edges, right sides together. Lay self-facing of front on back and pin side facing edges to shoulder edges. Stitch shoulder seams, catching facing. Turn front self-facing to inside on fold line. Do not press fold edge.

Press allowance on each armhole edge to inside, turn in to a width of 1 cm (3/8 in), and stitch.

Stitch side seams (seam number 2). Neaten allowances together and press to one side. Sew upper ends of allowances in place by hand.

Press hem allowance to inside. Work from outer side and use the twin needle to stitch hem, 5 cm (2 ins) from lower edge.

