

121Jacket

Burda sizes 36, 38, 40, 42, 44

Back length approx. 75 cm (30 ins)

Materials

Print jacquard, with a 25 cm (10 in) wide pattern repeat,
width: 150 cm (59 ins) wide
length: 2.00 m (2 1/4 yds) for all sizes.

Lining,
width: 140 m (55 ins)
length: 1.40 m (1 5/8 yds).

Interfacing: 1.00 m (1 1/8 yds) long, and 90 cm (36 in) wide.

5 ball buttons.

Shoulder pads.

Magic chalk.

For the belt: belting, 5 cm (2 ins) wide, and the required length (see "Cutting out").

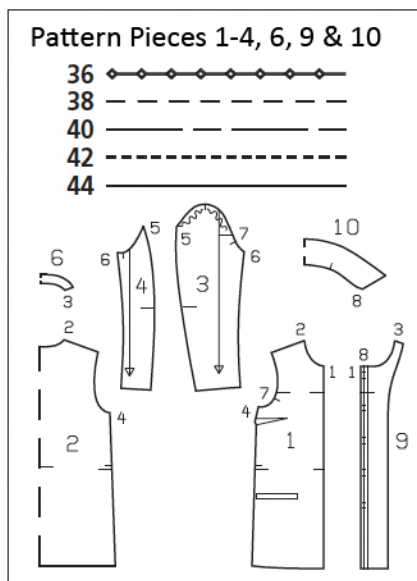
1 knob closure buckle, 5 cm (2 ins) wide.

Recommended fabrics: Jacket fabrics with some body.

Preparations

Print the pattern out on letter or A4 sized paper. It is very important to not scale the document. Your pattern will print on multiple pages, which you will then tile together. Arrange the sheets on a large, hard and flat surface matching up the numbers and letters (i.e. 6A to 6A). Cut or fold one of the sides and match the edge to its corresponding side. Then, tape down in place so paper is secure.

Trace the pattern pieces from the pattern sheet. The buttonholes marked on piece 9 are for size 36. For sizes 38 – 44, mark new buttonholes: Mark the top buttonhole the same distance from neck edge as for size 36. The bottom buttonhole is the same for all sizes. Space the other buttonholes evenly in between.

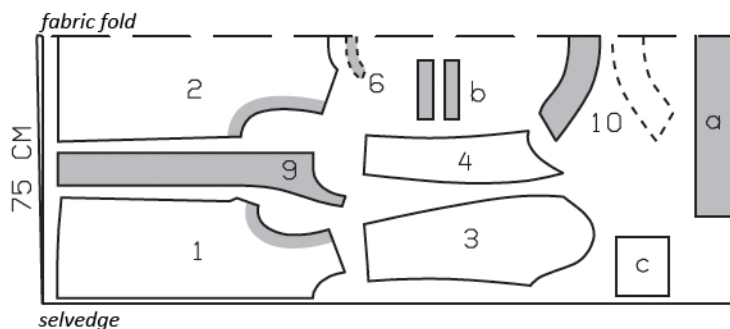


burda style magazine patterns do not have seam allowance included.

Seam and hem allowance to be added:

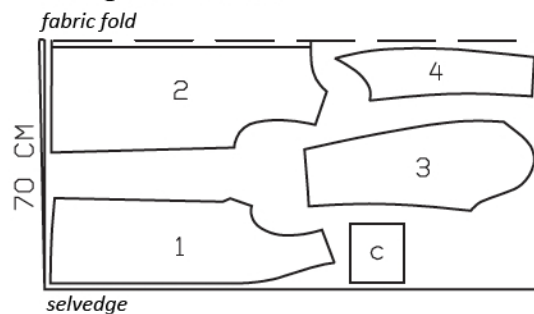
4 cm (1 5/8 ins) for hem and sleeve hems and 1.5 cm (5/8 in) at all other seams and edges.

Jacquard, 150cm wide



Lining, 140cm wide

Cut from a double layer of fabric, right side facing in. Match pattern stripes.



Cutting Out

Jacquard:

- 1 front 2x
- 2 back, on a fold 1x
- 3 upper sleeve 2x
- 4 under sleeve 2x
- 6 back facing, on a fold 1x
- 9 front band with self-facing 2x
- 10 collar, on a fold 2x

Draft the following pieces NOT included in the pattern:

a) belt for

- size 36: 85 cm (33 1/2 ins),
- size 38: 89 cm (35 ins),
- size 40: 93 cm (36 3/4 ins),
- size 42: 97 cm (38 1/4 ins),
- size 44: 101 cm (39 3/4 ins) long, 10 cm (4 ins) wide (incl. allowances),

b) 4 welt strips, each 17 cm (6 3/4 ins) long, 4 cm (1 5/8 ins) wide (incl. allowances),

c) 2 pocket pieces, each 17 cm (6 3/4 ins) wide, 18 cm (7 1/8 ins) long (incl. allowances).

Interfacing

See shaded area on pattern layout. Also interface hem allowances.

Lining:

Prepare paper pattern pieces: Cut lining pieces minus facing: Glue paper pattern piece 9 to front edge of piece 1. Fold facing on fold line and transfer inside facing edge to front piece = lining line. Lay paper pattern piece 6 on piece 2 and transfer inside facing edge to back piece = lining line. Cut pattern pieces along lining lines.

Cut piece 2 once, on a fold – to add extra fabric the ease pleat, lay the pattern piece 2 cm (3/4 in) from fold edge. Cut pieces 1, 3, and 4 and also pocket piece (c) twice each.

Sewing

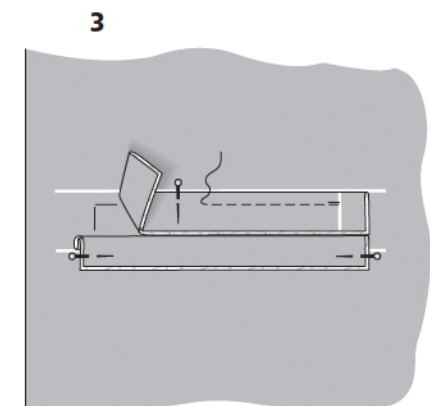
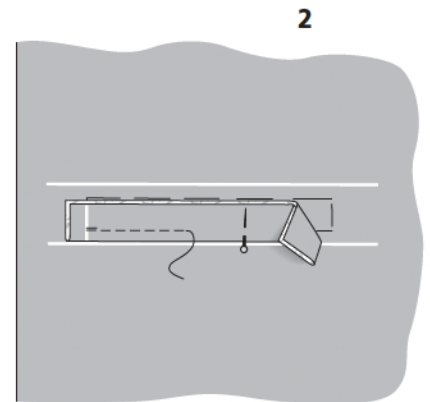
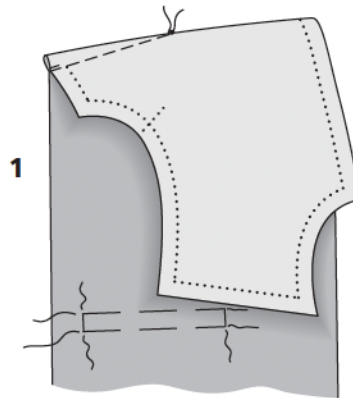
Bust darts:

Fold each front along dart line, right side facing in. Pin dart lines together. Stitch, beginning at side edge and stitching toward point. Do not backstitch at point of dart, but knot ends of thread securely here (image 1). Press darts down.

Welt pockets:

For all sizes, use vanishing chalk to mark welt placement lines on right fabric side 7 mm (1/4 in) (= finished welt width) from welt attachment lines.

Fold each welt strip in half lengthwise, wrong side facing in, and press. Pin fold edge of one welt strip to each lower placement line – open welt edges point up. Mark ends of pockets on welt strips. Stitch welts in place, 7 mm (1/4 in) from fold edge. Tie-off beginning and end of seam (image 2). Fold seam allowances of welts down and pin. Pin remaining two welts to upper placement lines – open edges point down. Mark ends of pockets and stitch welts in place, 7 mm (1/4 in) from fold edge (image 3).



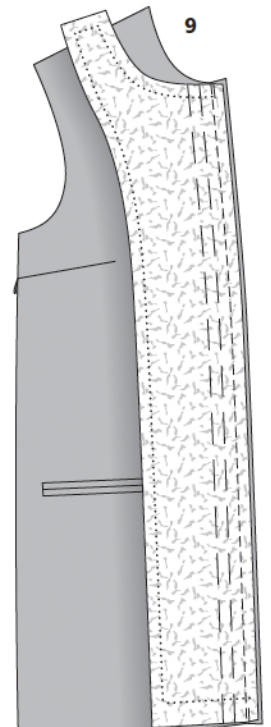
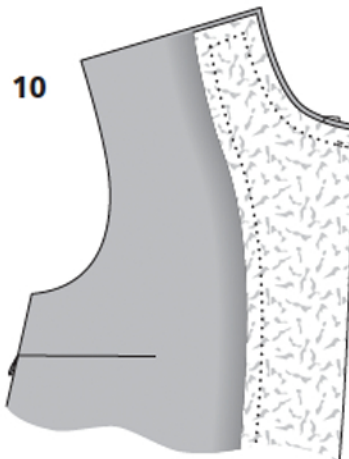
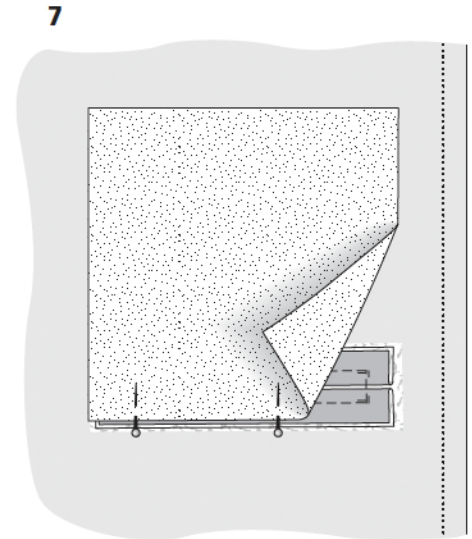
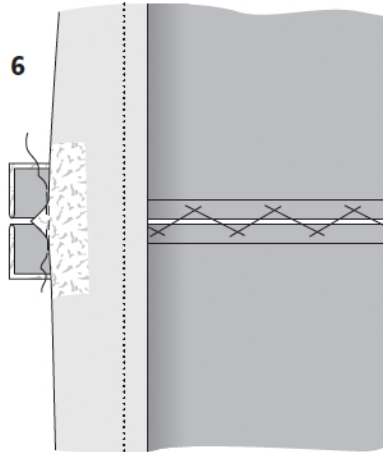
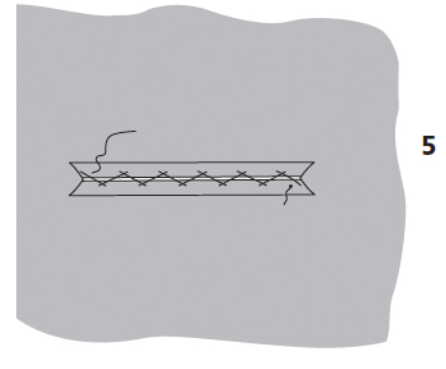
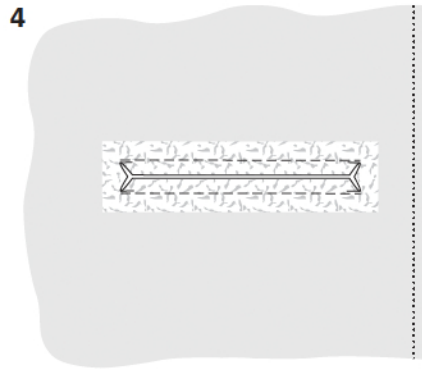
Sewing Continued...

Slash between lines of stitching, beginning and ending 1 cm (3/8 in) before ends of pockets, and clip diagonally toward each last stitch to form small triangles of fabric. Do not cut welts (image 4). Turn welts into pocket openings and pull ends of welts to inside. Press seam allowances of welt attachment seams up or down. Sew welts together with herringbone stitch, by hand (image 5). Fold small fabric triangles at welt ends to inside and stitch to welts, from seam end to seam end (image 6). Pin each pocket lining piece to lower welt attachment seam – pocket piece points up (image 7). Stitch seam allowances of welts to pocket pieces, close to attachment seams (image 8). Press pocket pieces down.

Pin pocket pieces of main fabric to seam allowances of upper welts (they point down). Stitch in place as described for pocket lining pieces. Pin pocket and lining pieces together, trim even, and stitch together. Remove herringbone stitches.

Front bands:

Pin each band to front, right sides facing. Stitch (image 9). Press seam allowances onto bands. Fold each self-facing to right side of jacket, on fold line, and pin to neck edge, from fold edge to centre front (seam number 8). Stitch (image 10). Leave facings lying on jacket, right sides together, for the time being.



Sewing Continued...**Shoulder seams:**

Lay fronts on back, right sides facing. Pin shoulder seams. Stitch. Pin shoulder edges of back facing to shoulder edges of front facings, right sides together. Stitch (image 11). Press seam allowances open.

Sew collar:

Lay collar pieces together, right sides facing. Pin attachment edges together. Roll the under collar to add the required extra fullness to the top collar. Pin outer long collar edges together, up to approx. 5 cm (2 ins) before corners – seam lines do not match (image 12). Then roll corners of collar and pin remaining collar edges together (image 13). Work from under collar to stitch outer collar edges together, beginning and ending exactly at marked attachment seam. Trim seam allowances diagonally across corners (image 14). Turn collar right side out. Press edges.

Attach collar:

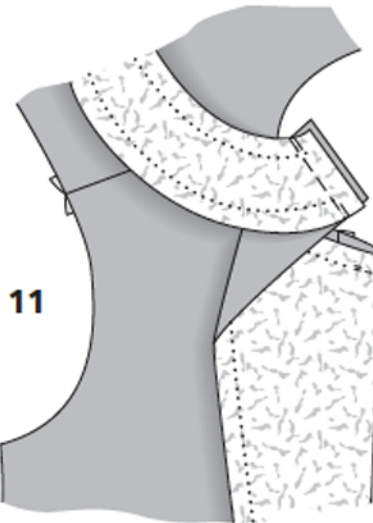
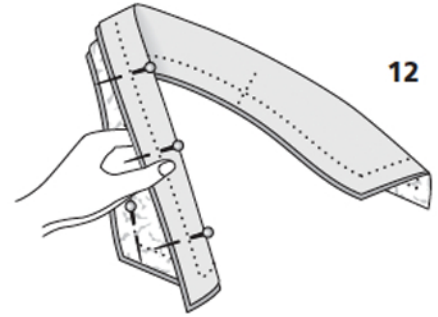
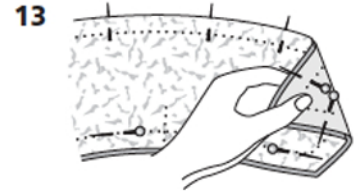
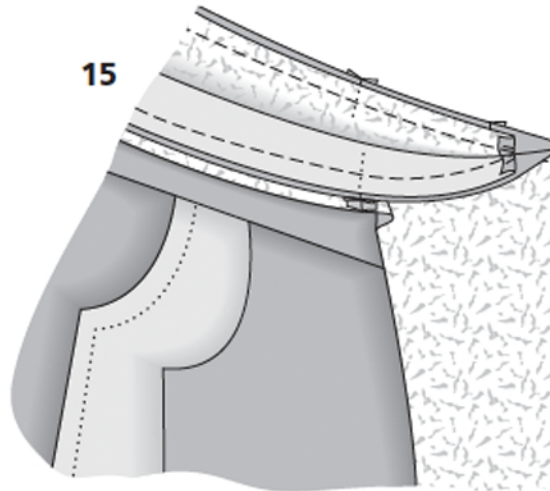
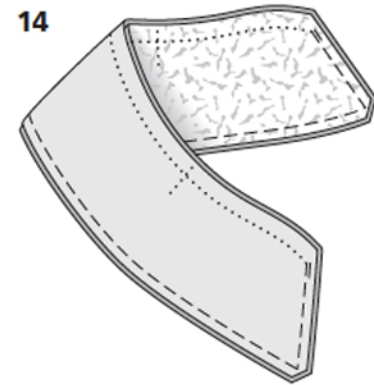
Slide collar between jacket and facing so that under collar lies on jacket. Pin under collar to neck edge of jacket, from centre front to centre front, and pin top collar to facing. Stitch (image 15). Trim seam allowances and clip curves. Press seam allowances of collar attachment seams open. Turn facing to inside. Press edges. Pin collar attachment seams together exactly. Turn back facing up and stitch seam allowances together, close to collar attachment seam. Turn facing down again.

Side seams:

Lay fronts on back, right sides facing. Pin side seams. Stitch. Press seam allowances open.

Hem:

Unfold facings out flat again. Press hem allowance to inside but do not yet sew in place. Turn facings to inside again.

**11****12****13****15****14****Sleeve seams:**

Lay each under sleeve piece on upper sleeve piece, right sides facing. Pin back sleeve seams (seam number 5). Stitch. Press seam allowances open. To ease sleeve cap, machine baste (longest stitch setting) to each side of marked seam line, between the dots. Do not yet pull bobbin threads. Fold sleeve lengthwise, right side facing in. Pin front sleeve seam (seam number 6). Stitch. Press seam allowances open. Press hem allowance to inside and stitch in place loosely by hand.

Sewing Continued...

Setting in sleeves:

First pin sleeve to armhole edge, only along underarm curve, right sides facing. Match seam mark on under sleeve to side seam. Match seam marks (7) on upper sleeve and front (image 16). Then pin seam mark on sleeve cap to shoulder seam. Ease fabric of sleeve cap along machine basting threads until sleeve edge matches armhole edge. Pin remainder of sleeve cap in place, distributing eased fullness evenly. Work from the sleeve side to baste and stitch sleeve in place (image 17). In area of sleeve cap, turn seam allowances toward sleeves.

Sew shoulder pads in place.

Sew lining:

To form the ease pleat, stitch along marked centre back at top and bottom, each approx. 5 cm (2 ins) long. Press pleat to one side. Stitch darts, side seams, shoulder seams, and sleeve seams. Set in sleeves.

Sew in lining:

Pin lining to inside facing edge, right sides together, turning allowance on lower facing edge down again to do so. Stitch (image 18). Lay lining inside jacket with wrong sides facing, pulling linings into sleeves. Turn allowance on lower facing edge to inside again then turn lining edge under along lower jacket edge and press fold edge lightly. Push lower lining edge up in a shallow curve toward upper edge of hem allowance and pin in place (image 19). Sew lining and lower facing edges to hem allowance.

Turn edge of each sleeve lining under and sew to hem allowance.

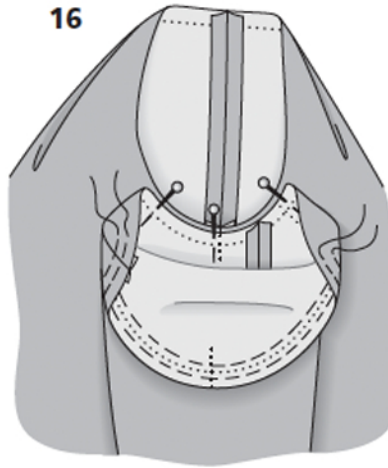
Buttonholes, buttons:

Work buttonholes on right front band. Sew buttons to left band to match.

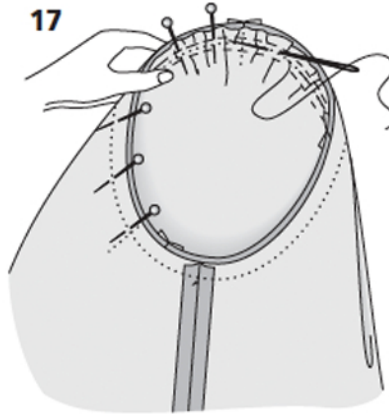
Belt:

On fabric belt piece (a), press long edges to wrong side, 2.5 cm (1 in) wide – finished width of belt = 5 cm (2 ins). Lay fabric piece on belting and edgestitch all edges in place. Attach belt buckle pieces to ends of belt.

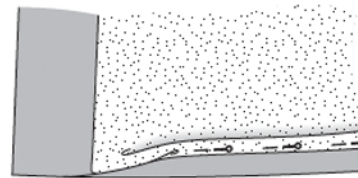
16



17



19



18

