

101 Blouse

Burda sizes 36, 38, 40, 42, 44

Back length approx. 67 cm (26 1/2 ins)

Materials

Cotton satin,
width: 150 cm (55 ins)
length: 1.35 – 1.35 – 1.40 – 1.40 – 1.40m (1 5/8 yds).

Piping: 0.70 – 0.70 – 0.75 – 0.75 – 0.75 m (7/8 yd).

Interfacing.

Vilene Bias Tape/ stay tape.

1 invisible zip, 60 cm (24 ins) long.

Recommended fabrics: Blouse fabrics.

Preparations

Print the pattern out on letter or A4 sized paper. It is very important to not scale the document. Your pattern will print on multiple pages, which you will then tile together. Arrange the sheets on a large, hard and flat surface matching up the numbers and letters (i.e. 6A to 6A). Cut or fold one of the sides and match the edge to its corresponding side. Then, tape down in place so paper is secure.

Trace the pattern pieces from the pattern sheet. Follow lines and details for style 101.

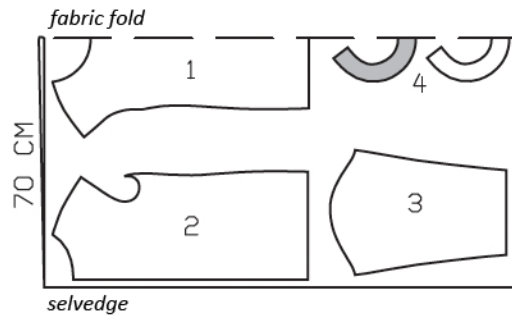
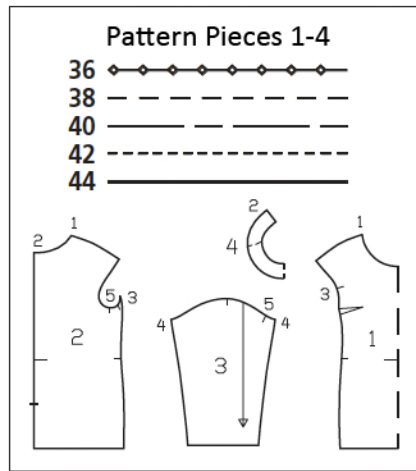
burda style magazine patterns do not have seam allowance included.

Seam and hem allowance to be added:
Seams and edges 1.5 cm (5/8 in), hem and sleeve hems 4 cm (1 5/8 ins) (flare sleeve hem allowance).

Cutting Out

- 1 front, on a fold 1x
- 2 back 2x
- 3 sleeve 2x
- 4 neck band, on a fold 2x

Interfacing: See shaded area on pattern layout. Iron interfacing to wrong side of outer neck band. Iron Vilene Bias Tape/ stay tape to wrong side of armhole edges.



Cut from a double layer of fabric, right side facing in.

Sewing

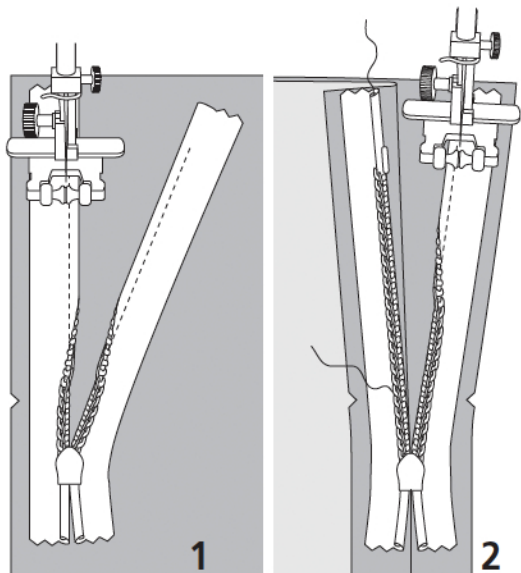
Stitch bust darts. Press darts down. Stitch shoulder seams. Press seam allowances open. Baste piping to lower edge of interfaced neck band so that piping cord lies on garment piece, next to seam line and the piping tape lies on the seam allowance. Stitch piping in place along marked seam line (zipper foot). Turn piping down and press seam allowances onto neck band. Pin neck band to neck edge of front and back pieces, with wrong side facing right side, and edgestitch in place.

Sew invisible zip to back slit edges, see the "Helpful Hint" on next page. Stitch centre back seam from lower edge to zip. Press seam allowances open.

Press allowance on lower edge of inside neck band to inside. Pin inside band to neck edge of blouse, right sides facing. At zip slit, turn inside band back, approx. 5 mm (3/16 in) before slit edge, and pin to upper edge. Turn allowances on slit edges of blouse to outside and pin to neck edge, over inside band. Stitch along neck edge. Turn allowances on slit edges to inside. Turn inside band up and stitch to seam allowances, as far as possible, close to seam. Turn inside band to inside and sew to zip tapes and to attachment seam.

Stitch forwarded side seams (seam number 3). Clip seam allowances of front at each seam mark. Press seam allowances open. Stitch sleeve seams, beginning at seam line at upper edge. Press sleeve seams open. Press sleeve hem allowances to inside and sew in place by hand.

Stitch sleeves to armhole edges, matching sleeve seams to seam marks on back. Press hem allowance to inside and sew in place by hand.



These special zippers come in various lengths. The zipper should be at least 2 cm (3/4 in) longer than the slit. It is sewn in place before the seam below the slit is stitched. A special presser foot is required to sew the zipper in place.

Sewing the zipper in place:

Open the zipper and push the coil back with your thumbnail to reveal the seam marking between the tape and the coil. Place the open zipper right side down on the right fabric side of one slit edge.

In order to stitch the zipper in place exactly along the marked seam line, you must first calculate the distance between the tape edge and the fabric edge as follows: width of seam allowance minus 1 cm (3/8 in) tape width = distance from edge of fabric. This will yield a value of 5 mm (3/16 in) if the width of the seam allowance is 1.5 cm (5/8 in).

Pin the top end of the zipper tape in place, the calculated distance from the edge of the fabric. The bottom end of the zipper will extend past the marked end of the slit. Place the presser foot on the zipper so that the coil is in the notch to the right of the needle (1). Stitch zipper in place, from the top to the marked end of the slit. Close zipper.

Place the other zipper tape face down on the opposite slit edge and pin in place at the top. Open zipper again. Place the presser foot on the top end of the zipper so that the coil is in the notch to the left of the needle (2). Sew the zipper in place, from the top to the end of the slit. Close zipper.

Now stitch the seam below the zipper, from bottom to top. Turn the loose lower end of the zipper out of the way, over the seam allowance. Stitch as close as possible to the last stitches of the zipper seams. Trim away excess zipper and bind the end with a scrap of fabric.