

108 Dress and Underdress

Burda sizes 34, 36, 38, 40, 42

Length from waist: dress 62 cm (24 1/2 ins);
underdress 60 cm (23 3/4 ins)

Materials

Dress and sash:

Chiffon,

width: 150 cm (59 ins)

length: 2.65 – 2.70 – 2.75 – 2.80 – 2.85 m
(3 – 3 – 3 1/8 – 3 1/8 – 3 1/4 yds).

Vilene Bias Tape/ stay tape.

Petersham ribbon, 1 cm (3/8 in) wide and 0.70
– 0.75 – 0.80 – 0.85 – 0.90 m (7/8 – 7/8 – 7/8 –
1 – 1 yd).

9 small sew-on snap fasteners.

Hook and eye.

Underdress:

Taffeta,

width: 145 cm (57 ins)

length: 1.00 m (1 1/8 yds) for all sizes.

Lining,

width: 140 cm (55 ins)

length: 1.00 m (1 1/8 yds).

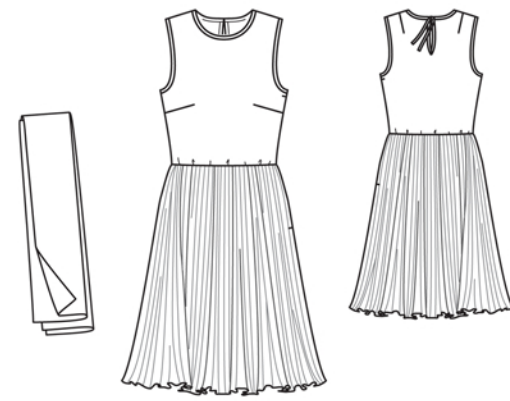
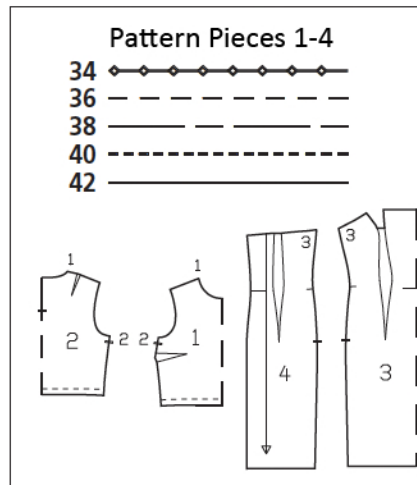
Vilene Bias Tape/ stay tape.

1 invisible zip, 40 cm (16 ins) long.

Recommended fabrics: For long-lasting pleats,
use lightweight, sheer fabrics with a high syn-
thetic content for the dress. Use fabrics with
some body for the underdress.

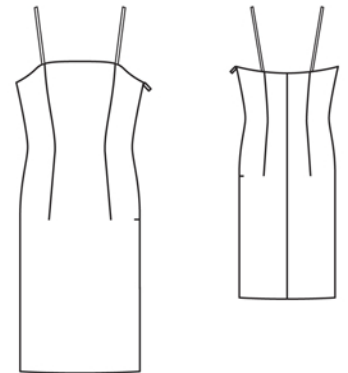
Preparations

Print the pattern out on letter or A4 sized paper.
It is very important to not scale or fit any of the
pages, you must print the document in
actual size. Your pattern will print on multiple
pages, which you will then tile together. Arrange
the sheets on a large, hard and flat surface
matching up the numbers and letters (i.e. 6A to
6A). Cut or fold one of the sides and match the
edge to it's corresponding side. Then, tape down
in place so paper is secure.



Trace the pattern pieces from the pattern
sheet following the lines and markings for your
size.

Also, follow the diagram (below) to make a
full-sized pattern piece for the skirt piece (a)
as follows: on a large sheet of wrapping paper –
the upper and right edges must form a right
angle – stretch a thread from the upper right
upper right corner to mark the radius (R) for the upper edge of the skirt
piece. Also mark the hem edge (R1). Or measure the length of the skirt
down from the upper edge of the skirt piece at several points and then con-
nect the points in an even curve to mark the hem edge.

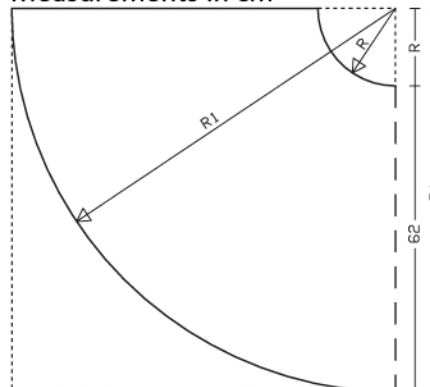


burda style magazine patterns do not have seam allowance included.

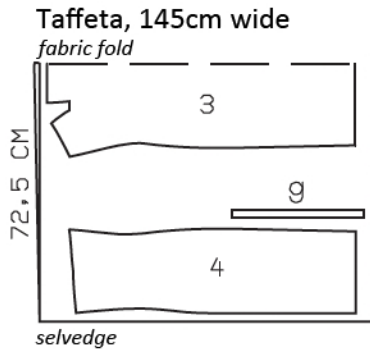
Seam and hem allowance to be added:

Seams and edges 1.5 cm (5/8 in), dress hem 1.5 cm (5/8 in), hem of under-
dress 4 cm (1 5/8 ins). Add 5 cm (2 ins) wide allowance to upper edge of
skirt pieces, for the sunburst pleats, and hand baste along the seam line to
make it visible.

Diagram
Measurements in cm

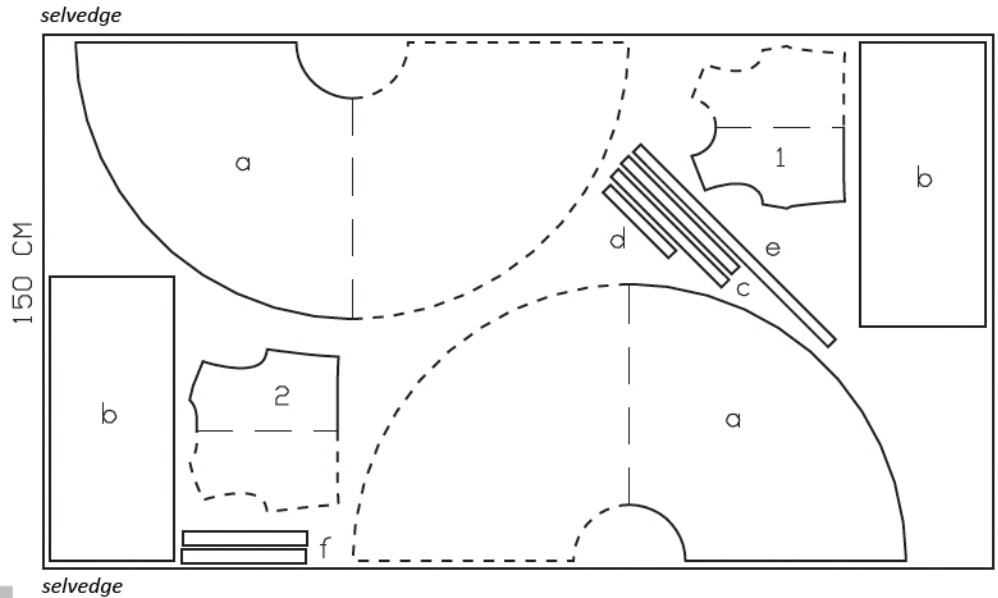


Radius for waist edge (R)
size 34: 15 cm, size 36: 15.5 cm
size 38: 16.5 cm, size 40: 17 cm
size 42: 17.5 cm
Radius for hem edge (R1)
size 34: 77 cm, size 36: 77.5 cm
size 38: 78.5 cm, size 40: 79 cm
size 42: 79.5 cm



Right side faces in on a double layer of fabric; right side faces up on a single layer of fabric.

Chiffon, 150cm wide



Cutting Out

Chiffon:

1 front, on a fold 1x

2 back, on a fold 1x

Draft the following pieces NOT included in the pattern:

a) skirt piece, cut 2 as shown in diagram,

b) 2 sash pieces, 80 – 80 – 80 – 85 – 85 cm (31 1/2 – 31 1/2 – 31 1/2 – 33 1/2 – 33 1/2 ins) long, 35 cm (13 3/4 ins) wide,

c) 2 bias binding strips for armhole edges, 43 – 44 – 46 – 47 – 49 cm (17 – 17 1/4 – 18 1/8 – 18 1/2 – 19 1/4 ins) long, 3 cm (1 1/4 ins) wide (incl. allowances),

d) bias binding strip for back opening, 26 cm (10 1/4 ins) long, 3 cm (1 1/4 ins) wide (incl. allowances),

e) bias binding strip for neck and tie bands, 80 cm (32 ins) long, 3 cm (1 1/4 ins) wide (incl. allowances),

f) 2 facing strips, 35 cm (13 3/4 ins) long, 4 cm (1 5/8 ins) wide (incl. allowances).

Vilene Bias Tape/ stay tape: Iron to wrong side of neck and armhole edges, with one edge extending 5 mm (3/16 in) past seam line and with remaining edge on seam allowance. Also iron to wrong side of fabric, over back slit marking.

Underdress

Taffeta:

3 front, on a fold 1x

4 back 2x

g) 2 straps, 39 – 40 – 41 – 42 – 43 cm (15 1/2 – 15 3/4 – 16 1/4 – 16 1/2 – 17 ins) long, 2 cm (3/4 in) wide (incl. allowances).

Lining: pieces 3 and 4

Vilene Bias Tape/ stay tape: Iron to wrong side of upper front and back edges.

Pleating:

Have skirt pieces commercially pleated: sunburst pleats.

Sewing

Dress

Stitch the bust darts. Trim dart allowances to a width of 7 mm (1/4 in), neaten edge of allowances together, and press down. Stitch darts in back and press toward centre back.

Stitch the shoulder seams of the dress bodice, beginning and ending exactly at marked neck and armhole edges. Trim seam allowances to 7 mm (1/4 in) wide, neaten together, and press onto back. Trim away seam allowances on armhole edges. Fold each binding strip in half lengthwise, right side facing out, and press. Pin each folded bias strip to inside of armhole edge and stitch in place, 5 mm (3/16 in) from fabric edges. Fold the binding strip over edge to outside and baste over attachment seam. Edgestitch binding in place.

Cut the back along the centre, to the marked end of the slit. Spread the cut edges open to a straight line. Fold the binding strip in half lengthwise, right side facing out, and press. Stitch the slit edges of the back to the folded binding strip, 5 mm (3/16 in) from fabric edge, tapering stitching toward the end of the slit (see illus.). Fold the binding strip over the slit edges to outside and baste over the attachment seam. Edgestitch binding in place. On inside lower end of slit, stitch diagonally across binding.

On neck edge, trim away seam allowance. Turn the ends of binding strip under. Fold binding strip in half lengthwise, right side facing out, and press. Pin the folded binding strip to inside of neck edge, leaving ends extending evenly, as tie bands. Stitch strip in place, 5 mm (3/16 in) from edge, then continue seam to stitch edges of tie bands closed, 5 mm (3/16 in) from edges. Turn the binding strip up and press the tie band edges under, 5 mm (3/16 in) wide. Fold the binding strip out over the neck edge and baste in place also basting the tie band edges together. Work from the right side to topstitch close to edges of tie bands and binding.

Stitch the right side seam. Trim seam allowances, neaten the allowances together, and press onto the back. Sew upper ends of seam allowances in place.

On each pleated skirt piece, trim away upper edge, 1.5 cm (5/8 in) above the seam line which is marked with basting stitches. Stitch the right side seam of the skirt. This seam should be hidden within a pleat fold. Neaten the seam allowances together.

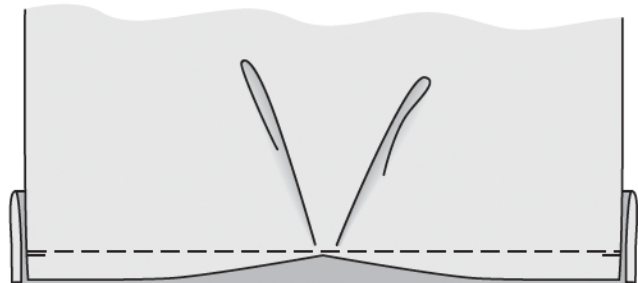
Gather the lower edge of the dress bodice and the upper skirt edge to 68 – 72 – 76 – 80 – 84 cm (26 3/4 – 28 1/2 – 30 – 31 1/2 – 33 ins). Stitch skirt to dress bodice. Trim the seam allowances to 1 cm (3/8 in) wide, neaten allowances together, and press up.

On side skirt edges, measure and mark 15 cm (6 ins) down from skirt attachment seam, for the slit. Stitch the left side seam (dress bodice and skirt), leaving the slit open as marked.

Trim the side slit allowances to 1 cm (3/8 in) wide. Fold one facing strip to half its width and press. Stitch folded strip to the front slit edge, 1 cm (3/8 in) from edge. Turn the strip to the inside and press the edge. Sew the strip to the waist seam. Fold the other strip in half lengthwise, right fabric side facing out, and press. Unfold the strip out flat again. Turn one long edge in to the pressed fold and press. Stitch the other edge to the back slit edge, stitching 1 cm (3/8 in) from edge. Fold the strip over the back slit edge and edgestitch this binding in place. Lay back binding under the front slit edge, as underlap. At ends of slit, stitch the front facing strip horizontally to underlap. Press the side seam allowances onto the front. Sew the top ends of the seam allowances in place.

Cut the petersham ribbon the length of skirt attachment seam plus 3 cm (1 1/4 ins). Fold ribbon ends under, 1.5 cm (5/8 in) wide, turn raw edges under, and stitch. Sew the hook to one end and sew the eye to the other end. Sew the petersham ribbon to seam allowance of skirt attachment seam, beginning and ending 2 cm (3/4 in) before slit edges and leaving the ends loose.

Finish the hem edge with closely spaced zigzag stitching: Press allowance to wrong fabric side. Work from right side to stitch along fold edge with small, closely spaced zigzag stitching. On inside, carefully trim allowance close to stitching.



Sewing Continued...

Sash: Stitch the sash pieces together. Neaten all edges with closely spaced zigzag stitching.
Underdress

Stitch vertical darts in front and back pieces.
Press darts toward centre front or back.

Stitch centre back seam. Press seam allowances open.

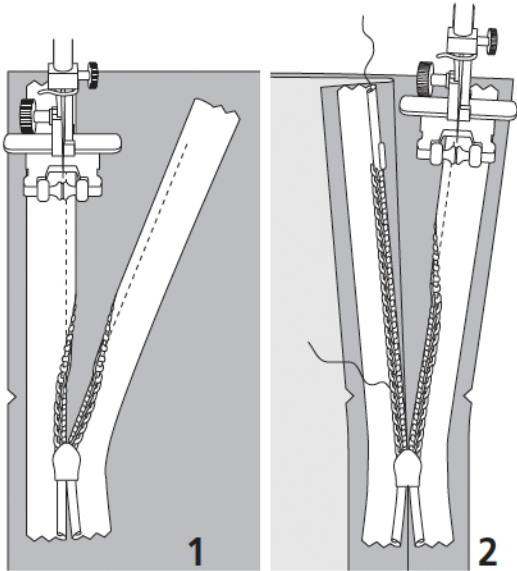
Sew invisible zip to left slit edges, see the "Helpful Hint" on next page. Stitch left side seam from lower edge to zip. Stitch right side seam. Press seam allowances open.

Fold each strap in half lengthwise, wrong side facing in, and press. Unfold strap out flat again. Now turn each long edge in to the pressed fold and press. Fold straps in half lengthwise again. Edgestitch turned-under edges closed. Baste straps to upper front edge, next to darts.

Stitch darts and seams of lining.

Pin lining to upper edge of dress, right sides facing. At each zip slit edge, turn lining back, approx. 5 mm (3/16 in) before slit edge, and pin to upper edge. At slit edges of dress, turn allowances to outside and pin to upper edge, over lining. Stitch along upper edge, leaving a section of seam open next to each back dart, for straps. Trim seam allowances. Turn lining and allowances of slit edges to inside. Slip back strap ends into openings in seam on upper back edge and pin. Try on dress to determine correct strap length. Then reach between main fabric and lining to pull upper edge out again. Stitch seam openings closed, catching straps. Turn lining edges under and sew to zip tapes.

Press the hem allowance to the inside and sew hem in place by hand. Hem the lining so that it is approx. 2 cm (3/4 in) shorter than the dress.



These special zippers come in various lengths. The zipper should be at least 2 cm (3/4 in) longer than the slit. It is sewn in place before the seam below the slit is stitched. A special presser foot is required to sew the zipper in place.

Sewing the zipper in place:

Open the zipper and push the coil back with your thumbnail to reveal the seam marking between the tape and the coil. Place the open zipper right side down on the right fabric side of one slit edge.

In order to stitch the zipper in place exactly along the marked seam line, you must first calculate the distance between the tape edge and the fabric edge as follows: width of seam allowance minus 1 cm (3/8 in) tape width = distance from edge of fabric. This will yield a value of 5 mm (3/16 in) if the width of the seam allowance is 1.5 cm (5/8 in).

Pin the top end of the zipper tape in place, the calculated distance from the edge of the fabric. The bottom end of the zipper will extend past the marked end of the slit. Place the presser foot on the zipper so that the coil is in the notch to the right of the needle (1). Stitch zipper in place, from the top to the marked end of the slit. Close zipper.

Place the other zipper tape face down on the opposite slit edge and pin in place at the top. Open zipper again. Place the presser foot on the top end of the zipper so that the coil is in the notch to the left of the needle (2). Sew the zipper in place, from the top to the end of the slit. Close zipper.

Now stitch the seam below the zipper, from bottom to top. Turn the loose lower end of the zipper out of the way, over the seam allowance. Stitch as close as possible to the last stitches of the zipper seams. Trim away excess zipper and bind the end with a scrap of fabric.