

107 Dress

Burda sizes 38, 40, 42, 44, 46,
Length from waist 66 cm (26 ins)

Materials

Crêpe,
width: 150 cm (59 ins)
length: 1.35 m (1 1/2 yds) for all sizes.

Lining,
width: 150 cm (55 ins)
length: 1.20 – 1.25 – 1.25 – 1.30 – 1.30 m
(1 3/8 – 1 1/2 – 1 1/2 – 1 1/2 – 1 1/2 yds).

Interfacing.

Vilene Bias Tape/ stay tape.

1 invisible zip, 60 cm (24 ins) long.

1 fabric-covered belt buckle (without prong),
bar width 4 cm (1 5/8 ins).

Recommended fabrics: Dress fabrics.

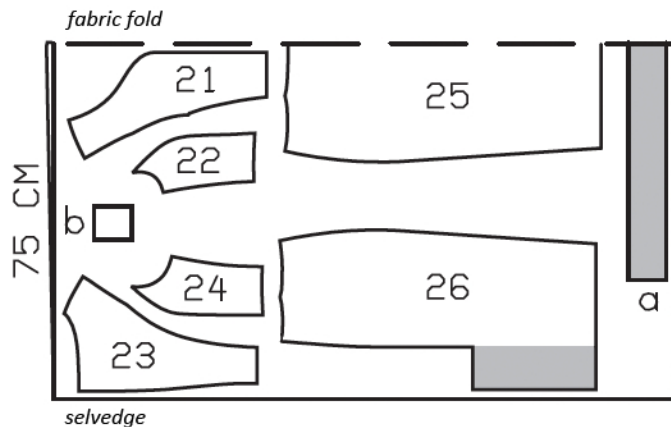
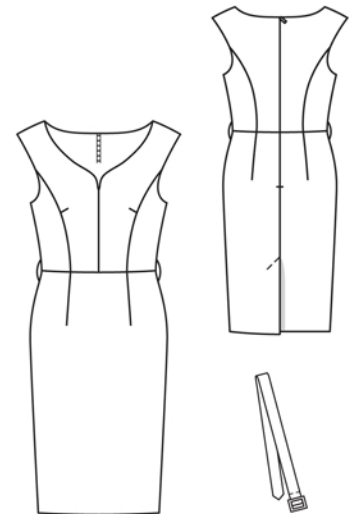
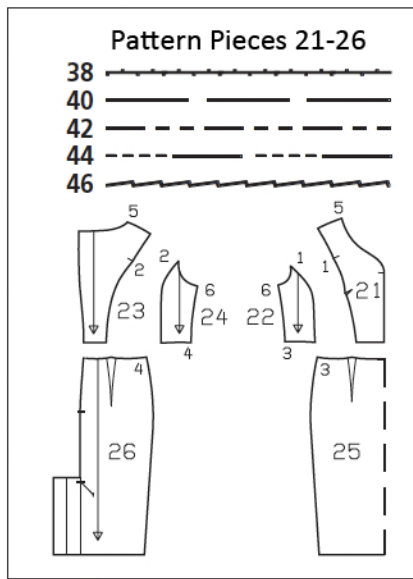
Preparations

Print the pattern out on letter or A4 sized paper. It is **very important** to not scale or fit any of the pages, you must print the document in **actual size**. Your pattern will print on multiple pages, which you will then tile together. Arrange the sheets on a large, hard and flat surface matching up the numbers and letters (i.e. 6A to 6A). Cut or fold one of the sides and match the edge to it's corresponding side. Then, tape down in place so paper is secure.

Trace the pattern pieces from the pattern sheet following the lines and markings for your size. Note different lines for right and left edges of back vent but first cut the skirt pieces the same size, from the double layer of fabric.

burda style magazine patterns do not have seam allowance included.

Seam and hem allowance to be added:
Seams and edges 1.5 cm (5/8 in), hem 4 cm (1 5/8 ins), lining 1.5 cm (5/8 in).



Cut from a double layer of fabric, right side facing in.

Cutting Out

Crêpe:

- 21 centre front 2x
- 22 side front 2x
- 23 centre back 2x
- 24 side back 2x
- 25 front skirt piece, on a fold 1x
- 26 back skirt piece 2x

Draft the following piece NOT included in the pattern:

a) belt, 100 – 104 – 108 – 112 – 116 cm (30 1/2 – 41 – 42 1/2 – 44 1/4 – 45 3/4 ins) long, 8 cm (3 1/4 ins) wide, finished width 4 cm (1 5/8 in).

Lining: pieces 21 to 25, piece 26 without vent hem allowance.

Interfacing: Interface back vent facings with G 785 interfacing and Interface belt with H 250. Iron Vilene Bias Tape/ stay tape to wrong sides of neck, armhole, and zip slit edges.

Sewing

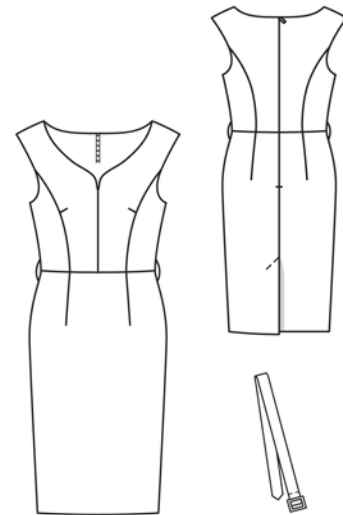
Stitch bust darts in centre front pieces. Press darts up. Stitch front and back section seams of bodice, beginning exactly at seam mark. Clip seam allowances of centre front and back pieces at seam marks. Press allowances of section seams open.

Sew invisible zip to edges of centre back pieces, from upper edge down approx. 15 cm (6 ins) long, see the „Helpful Hint“ on next page.

Stitch lining pieces together as for pieces of main fabric.

Neck edge, armholes, centre front seam: Pin lining pieces to front and back pieces, right sides facing. At each zip slit edge, turn lining back, approx. 5 mm (3/16 in) before marked seam line, and pin to neck edge. On slit edges of dress, turn allowances to outside and pin in place, over lining. Stitch along marked neck and armhole edges, beginning and ending each seam approx. 2 cm (3/4 in) below shoulder seam lines. On front neck edges, stitch exactly to seam mark. Trim seam allowances and clip curves close to line of stitching. On each front, turn lining up and pin. Stitch centre front seam below seam mark, with right sides facing. Remove pins, and stitch centre seam of lining. Press seam allowances open. On front (not on back), turn lining to inside. Slide front shoulder edges between the as-yet-unturned back shoulder edges, right fabric sides of front and back and of lining are facing. Stitch shoulder seams of dress and lining. Pull front which lies inside and lining up and out slightly and press seam allowances open. This will be easier if you slip the handle of a wooden spoon under the seams. Then stitch the remaining open neck edges together. Pull front down out of back shoulder edges and the back lining will turn itself to the inside. Press neck edges.

Stitch darts in skirt pieces and press toward centre. Stitch skirt front skirt to bodice front and stitch skirt backs to bodice backs. Press seam allowances up.



Stitch remaining edges of of invisible zip in place, as far as slit mark. Stitch centre back seam from vent to zip.

Press seam allowances of centre seam open and press left vent facing to inside. Lay right vent underlap onto left back and above vent, press under seam allowance of right back, tapering as you go, to avoid the need to clip the allowance. Trim left vent facing to 6 cm (2 3/8 ins) wide. At vent underlap, press facing to inside. Topstitch left back as marked, catching underlap.

Stitch darts in skirt lining panels. Stitch centre back seam between slit marks. Stitch skirt lining front to bodice lining front and stitch skirt lining backs to bodice lining backs.

Lay front on back, right sides facing and turn lining up. Stitch side seams as continuous seams. Press seam allowances open. Turn lining down again.

Unfold back vent facings again. Press hem allowance to inside and sew in place by hand. Turn facings to inside again and sew to hem allowance.

Hem lining – it should be approx. 2 cm (3/4 in) shorter than dress. Turn lining edges under and sew to zip tapes. Pin lining in place around vent. Trim lining to 2 cm (3/4 in) before inside edge of vent facings, trim away across top of vent, and clip approx. 1 cm (3/8 in) into top corners. Turn lining edges under and sew to vent facings.

Fold belt lengthwise, right side facing in. Stitch long edges together. Press seam allowances open (over the edge of your ironing board). Place seam along centre. Trim one belt end to a point and stitch closed. Turn belt right side out and press edges. Topstitch close to edges. Fold straight end of belt over bar of buckle, turn raw edge under, and stitch in place.



These special zippers come in various lengths. The zipper should be at least 2 cm (3/4 in) longer than the slit. It is sewn in place before the seam below the slit is stitched. A special presser foot is required to sew the zipper in place.

Sewing the zipper in place:

Open the zipper and push the coil back with your thumbnail to reveal the seam marking between the tape and the coil. Place the open zipper right side down on the right fabric side of one slit edge.

In order to stitch the zipper in place exactly along the marked seam line, you must first calculate the distance between the tape edge and the fabric edge as follows: width of seam allowance minus 1 cm (3/8 in) tape width = distance from edge of fabric. This will yield a value of 5 mm (3/16 in) if the width of the seam allowance is 1.5 cm (5/8 in).

Pin the top end of the zipper tape in place, the calculated distance from the edge of the fabric. The bottom end of the zipper will extend past the marked end of the slit. Place the presser foot on the zipper so that the coil is in the notch to the right of the needle (1). Stitch zipper in place, from the top to the marked end of the slit. Close zipper.

Place the other zipper tape face down on the opposite slit edge and pin in place at the top. Open zipper again. Place the presser foot on the top end of the zipper so that the coil is in the notch to the left of the needle (2). Sew the zipper in place, from the top to the end of the slit. Close zipper.

Now stitch the seam below the zipper, from bottom to top. Turn the loose lower end of the zipper out of the way, over the seam allowance. Stitch as close as possible to the last stitches of the zipper seams. Trim away excess zipper and bind the end with a scrap of fabric.