

105 Dress

Burda sizes 36, 38, 40, 42, 44
Length from waist 53 cm (21 ins)

Materials

Natté,
width: 130 cm (51 ins)
length: 1.30 m (1 1/2 yds) for all sizes.

Guipure lace with two scalloped edges,
width: 90 cm (36 ins)
length: 0.40 – 0.40 – 0.40 – 0.45 – 0.45 m
(1/2 – 1/2 – 1/2 – 5/8 – 5/8 yd).

Interfacing.

1 invisible zip, 60 cm (24 ins) long.

Recommended fabrics: Dress fabrics with some body. Lace fabric with scalloped edges for the sleeves.

Preparations

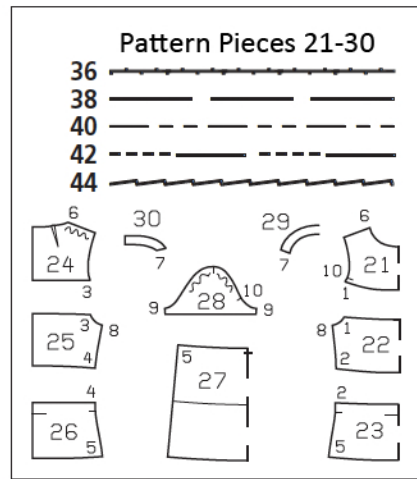
Print the pattern out on letter or A4 sized paper. It is **very important** to not scale or fit any of the pages, you must print the document in **actual size**. Your pattern will print on multiple pages, which you will then tile together. Arrange the sheets on a large, hard and flat surface matching up the numbers and letters (i.e. 6A to 6A). Cut or fold one of the sides and match the edge to it's corresponding side. Then, tape down in place so paper is secure.

Trace the pattern pieces from the pattern sheet following the lines and markings for the correct size and the correct style (105). This pattern also includes pattern pieces, lines and markings for other styles that should be ignored.

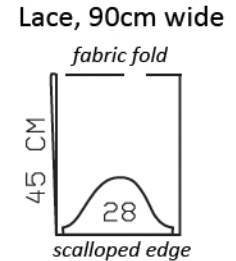
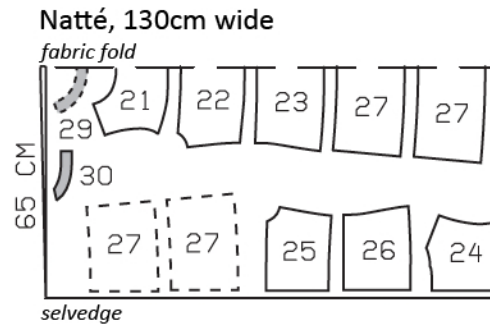
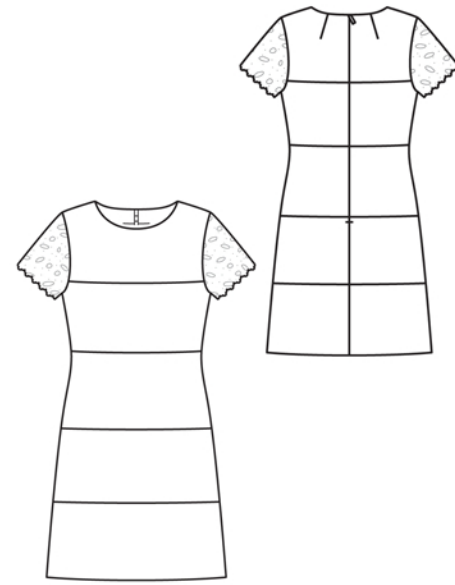
Cut the skirt piece apart on the marked seam line = upper and lower skirt piece pieces.

burda style magazine patterns do not have seam allowance included.

Seam and hem allowance to be added:
Seams and edges 1.5 cm (5/8 in), hem 4 cm (1 5/8 ins).



Cut from a double layer of fabric, right side facing in. Pin the scalloped edges of the lace fabric together exactly.



Cutting Out

Natté:

- 21 upper front, on a fold 1x
- 22 centre front, on a fold 1x
- 23 lower front, on a fold 1x
- 24 upper back 2x
- 25 centre back 2x
- 26 lower back 2x
- 27 upper front skirt piece, on a fold 1x
- 27 lower front skirt piece, on a fold 1x
- 27 upper back skirt piece 2x
- 27 lower back skirt piece 2x
- 29 front neck facing, on a fold 1x
- 30 back neck facing 2x

Lace fabric:

- 28 sleeve 2x
- Lay lower edges of sleeves on scalloped edge of lace.

Interfacing: See shaded area on pattern layout. Iron strips of interfacing, approx. 2 cm (3/4 in) wide, to wrong side of zip slit edges.

Sewing

Stitch darts in upper back pieces. Press darts toward centre back.

Stitch horizontal section seams on front and back pieces. Stitch skirt piece pieces together. Stitch skirt front to bodice front and stitch skirt backs to bodice backs. Press seam allowances open.

Sew invisible zip to back slit edges, see the "Helpful Hint" on next page. Stitch centre back seam from lower edge to zip.

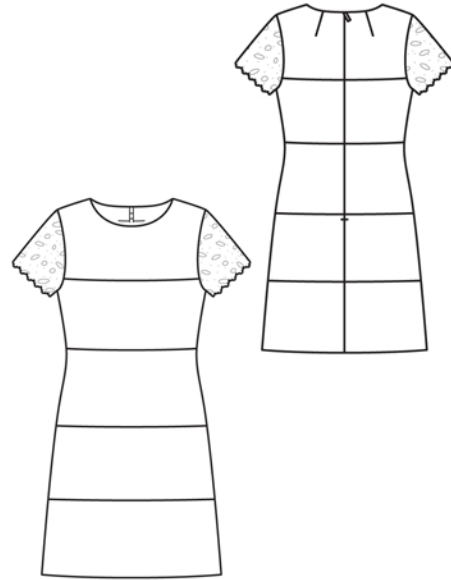
Stitch side seams, shoulder seams, and facing seams.

Neck edge: Pin facing to neck edge of dress, right sides together. At each zip slit edge, turn facing back, approx. 5 mm (3/16 in) before slit edge, and pin to upper edge. On slit edges of dress, turn allowances of slit edges to outside and pin to neck edge, over facing. Stitch along marked neck edge. Trim seam allowances and clip curves. Turn allowances of slit edges to inside. Turn facing up and stitch to seam allowances, as far as possible, close to seam. Turn facing to inside and press neck edge. Sew facing to zip tapes and to shoulder seams.

Stitch sleeve seams. Trim seam allowances to 7 mm (1/4 in) wide, neaten together, and press to one side. Sew lower edges of sleeve seam allowances in place.

Set in sleeves, easing sleeve caps.

Press hem allowance to inside and sew in place by hand.





These special zippers come in various lengths. The zipper should be at least 2 cm (3/4 in) longer than the slit. It is sewn in place before the seam below the slit is stitched. A special presser foot is required to sew the zipper in place.

Sewing the zipper in place:

Open the zipper and push the coil back with your thumbnail to reveal the seam marking between the tape and the coil. Place the open zipper right side down on the right fabric side of one slit edge.

In order to stitch the zipper in place exactly along the marked seam line, you must first calculate the distance between the tape edge and the fabric edge as follows: width of seam allowance minus 1 cm (3/8 in) tape width = distance from edge of fabric. This will yield a value of 5 mm (3/16 in) if the width of the seam allowance is 1.5 cm (5/8 in).

Pin the top end of the zipper tape in place, the calculated distance from the edge of the fabric. The bottom end of the zipper will extend past the marked end of the slit. Place the presser foot on the zipper so that the coil is in the notch to the right of the needle (1). Stitch zipper in place, from the top to the marked end of the slit. Close zipper.

Place the other zipper tape face down on the opposite slit edge and pin in place at the top. Open zipper again. Place the presser foot on the top end of the zipper so that the coil is in the notch to the left of the needle (2). Sew the zipper in place, from the top to the end of the slit. Close zipper.

Now stitch the seam below the zipper, from bottom to top. Turn the loose lower end of the zipper out of the way, over the seam allowance. Stitch as close as possible to the last stitches of the zipper seams. Trim away excess zipper and bind the end with a scrap of fabric.