

### 104 Dress

**Burda sizes 17, 18, 19, 20, 21**

Length from waist 58 cm (23 ins)

3/4-sleeves, approx. 48 cm (19 ins) long

### Materials

**Bouclé,**  
width: 150 cm (59 ins)  
length: 1.55 – 1.55 – 1.55 – 1.70 – 1.70 m  
(1 3/4 – 1 3/4 – 1 3/4 – 1 7/8 – 1 7/8 yds).

**Lining,**  
width: 140 cm (55 ins)  
length: 1.40 m (1 5/8 yds) for all sizes.

**Interfacing.**

1 invisible zip, 60 cm (24 ins) long.

2 fabric-covered buttons.

Recommended fabrics: Dress fabrics of wool or blends.

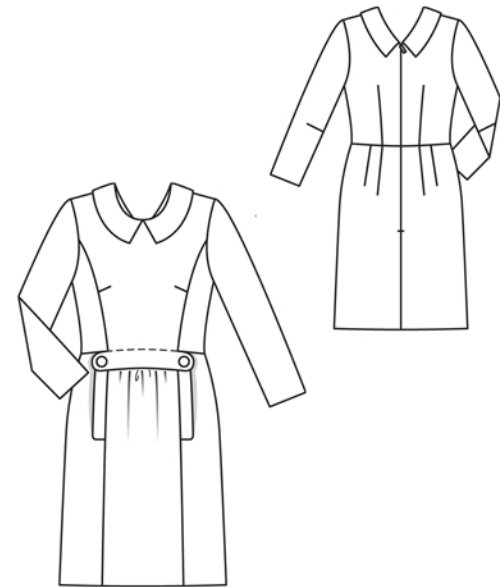
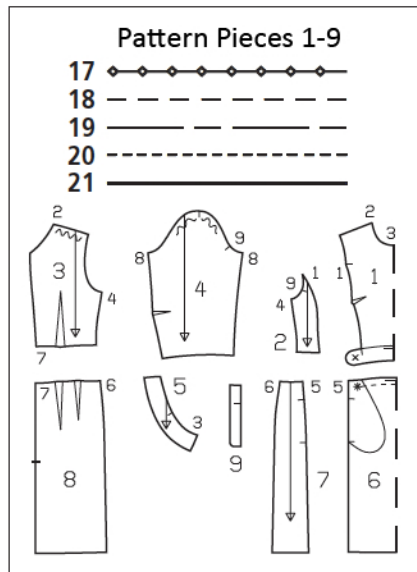
### Preparations

Print the pattern out on letter or A4 sized paper. It is very important to not scale or fit any of the pages, you must print the document in actual size. Your pattern will print on multiple pages, which you will then tile together. Arrange the sheets on a large, hard and flat surface matching up the numbers and letters (i.e. 6A to 6A). Cut or fold one of the sides and match the edge to it's corresponding side. Then, tape down in place so paper is secure.

Trace the pattern pieces from the pattern sheet following the lines and markings for your size. Trace facing from piece 1 as a separate pattern piece. Trace pocket piece from piece 6 as a separate pattern piece.

**burda style magazine patterns do not have seam allowance included.**

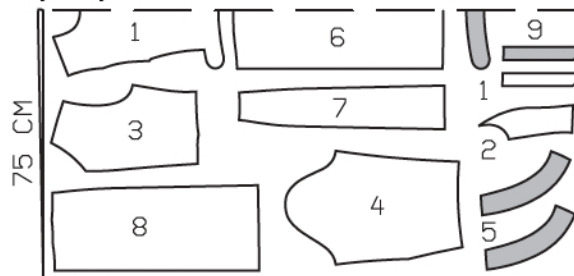
Seam and hem allowance to be added:  
Seams and edges 1.5 cm (5/8 in), hem 4 cm (1 5/8 ins), sleeve hems 4 cm (1 5/8 ins) (flare side of sleeve hem allowance). Cut lining pieces with 1.5 cm (5/8 in) wide seam and hem allowances.



**Bouclé, 150cm wide**

**Sizes 17-19**

*fabric fold*

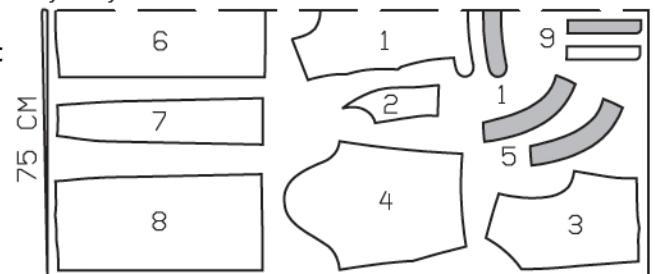


*selvedge*

**Sizes 20,21**

*fabric fold*

Cut from a double layer of fabric, right side facing in.

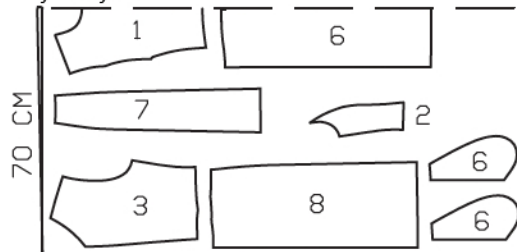


*selvedge*

**Lining, 140cm wide**

**Sizes 17-21**

*fabric fold*



*selvedge*

## Cutting Out

### Bouclé:

- 1 centre front, on a fold 1x
- facing, on a fold 1x
- 2 side front 2x
- 3 back 2x
- 4 sleeve 2x
- 5 collar 4x
- 6 centre front skirt piece,  
on a fold 1x
- 7 side front skirt piece 2x
- 8 back skirt piece 2x
- 9 welt 4x

### Lining:

- 6 pocket piece 4x
- also piece 1 to facing line, and pieces 2, 3, 6, 7,  
8.

Interfacing: See shaded area on pattern layout.

## Sewing

Stitch darts in centre front and press down.  
Stitch darts in back pieces and back skirt pieces  
and press darts toward centre back.

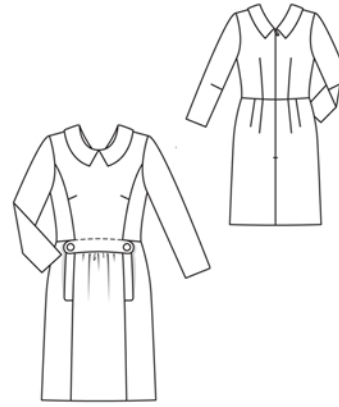
Lay facing on integrated front band, right sides  
together, and stitch to band edges, from seam  
mark. Trim seam allowances and clip diagonally  
into corners. Turn facing to inside. Baste inside  
edge in place. Turn band ends back and pin.

Stitch side fronts to centre front, from seam  
number 1 to corner. Press seam allowances  
open.

Stitch side seams and shoulder seams of dress  
bodice.

Gather upper edge of centre front skirt piece  
between asterisks, to 16.5 – 18 – 19.5 – 21 –  
22.5 cm (6 1/2 – 7 1/8 – 7 3/4 – 8 3/8 – 9 ins).

Stitch each interfaced welt piece to welt piece  
with no interfacing, right sides together, leaving  
attachment edge and upper narrow edge open.  
Trim seam allowances. Turn welts right side out.  
Baste each welt to side seam edge of centre  
front skirt piece – faced lower narrow edge of  
welt meets lower seam mark on pocket open-



ing. Stitch section seams on skirt front, not stitching across pocket openings.  
Press seam allowances open and press welts toward the sides. Pin pocket  
pieces to seam allowances of pocket opening edges, right sides facing. Stitch  
pocket pieces in place, along marked seam line on pocket opening and close  
to section seam above pocket opening. Press pocket pieces forward and  
stitch together. Sew lower narrow edges of welts in place by hand and baste  
upper narrow edges in place.

Stitch side seams of skirt. Stitch skirt to dress bodice, beginning and ending  
at front section seams. Press seam allowances up. Remove pins at band  
ends. Stitch bodice centre front to upper edge of centre front skirt piece,  
along marked stitching line. Hand-sew upper edge of band in place, approx.  
3 cm (1 1/4 ins) long, beginning at section seam.

Sew invisible zip in place, see the “Helpful Hint” on next page. Stitch centre  
back seam from lower edge to zip.

Stitch pairs of collar pieces together along outer edges. Turn collar right side  
out and press edges. Baste attachment edges of each collar together to back  
neck edge – back collar ends meet teeth of zip and front ends meet at  
centre front. Do not catch seam allowances of zip slit.

Gather centre front skirt lining panel between asterisks. Stitch darts and  
seams of lining. Leave slit for zip open, 2 cm (3/4 in) longer than marked.  
Pull lining over dress, with right sides facing, and pin to neck edge, over  
collar. At zip slit, turn lining back, approx. 5 mm (3/16 in) before slit edge,  
and pin to neck. On slit edges of dress, turn allowances to outside and pin to  
neck, over lining. Stitch along marked neck edge. Trim seam allowances.  
Turn lining up and stitch to seam allowances, as far as possible, close to  
seam. Turn lining to inside and baste to armhole edges. Turn lining edges  
under and sew to zip tapes.

Stitch darts in sleeves. Press darts up. Stitch sleeve seams. Press sleeve hem  
allowances to inside and sew in place by hand.

Set in sleeves, easing sleeve caps. On lower edge of dress, press hem allow-  
ance to inside and sew in place by hand. Hem lining so that it is approx. 2 cm  
(3/4 in) shorter than dress.

Sew buttons to band ends, as marked, catching skirt.



These special zippers come in various lengths. The zipper should be at least 2 cm (3/4 in) longer than the slit. It is sewn in place before the seam below the slit is stitched. A special presser foot is required to sew the zipper in place.

### **Sewing the zipper in place:**

Open the zipper and push the coil back with your thumbnail to reveal the seam marking between the tape and the coil. Place the open zipper right side down on the right fabric side of one slit edge.

In order to stitch the zipper in place exactly along the marked seam line, you must first calculate the distance between the tape edge and the fabric edge as follows: width of seam allowance minus 1 cm (3/8 in) tape width = distance from edge of fabric. This will yield a value of 5 mm (3/16 in) if the width of the seam allowance is 1.5 cm (5/8 in).

Pin the top end of the zipper tape in place, the calculated distance from the edge of the fabric. The bottom end of the zipper will extend past the marked end of the slit. Place the presser foot on the zipper so that the coil is in the notch to the right of the needle (1). Stitch zipper in place, from the top to the marked end of the slit. Close zipper.

Place the other zipper tape face down on the opposite slit edge and pin in place at the top. Open zipper again. Place the presser foot on the top end of the zipper so that the coil is in the notch to the left of the needle (2). Sew the zipper in place, from the top to the end of the slit. Close zipper.

Now stitch the seam below the zipper, from bottom to top. Turn the loose lower end of the zipper out of the way, over the seam allowance. Stitch as close as possible to the last stitches of the zipper seams. Trim away excess zipper and bind the end with a scrap of fabric.