

102A Dress

Burda sizes 36, 38, 40, 42, 44

Length from waist 68 cm (26 3/4 ins)

Materials

Stiff silk crêpe,
width: 145 cm (57 ins)
length: 1.65 – 1.65 – 1.70 – 1.70 – 1.70 m (1 7/8 yds).

Lining,
width: 150 cm (55 ins)
length: 1.20 m (1 3/8 yds) for all sizes.

Interfacing.

Vilene Bias Tape/ stay tape.

1 invisible zip, 60 cm (24 ins) long.

15 small sew-on snap fasteners and 2 larger sew-on snap fasteners.

3 small hooks.

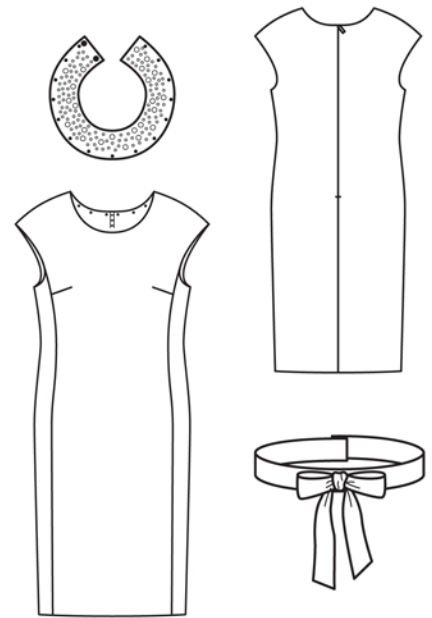
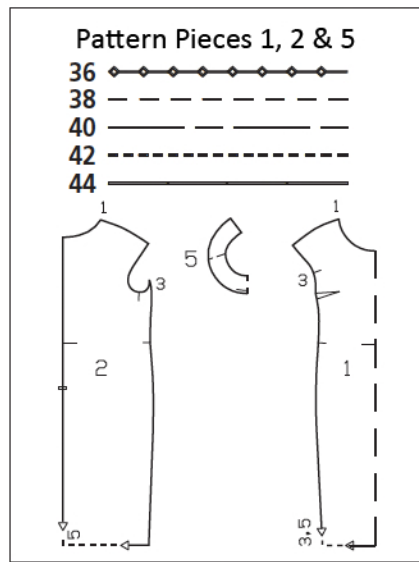
Beads: Swarovki Elements Gem Pearls – Crystal Turquoise Pearl, Crystal Pink Coral Pearl.

Recommended fabrics: Dress fabrics with some body.

Preparations

Print the pattern out on letter or A4 sized paper. It is **very important** to not scale or fit any of the pages, you must print the document in **actual size**. Your pattern will print on multiple pages, which you will then tile together. Arrange the sheets on a large, hard and flat surface matching up the numbers and letters (i.e. 6A to 6A). Cut or fold one of the sides and match the edge to it's corresponding side. Then, tape down in place so paper is secure.

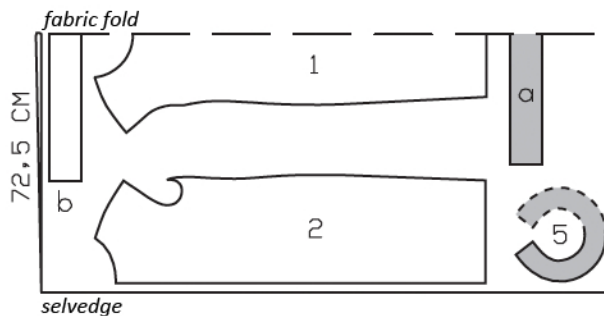
Trace the pattern pieces from the pattern sheet following the lines and markings for the correct size and the correct style (102A). This pattern also includes pattern pieces, lines and markings for other styles that should be ignored.



burda style magazine patterns do not have seam allowance included.

Seam and hem allowance to be added:

Seams and edges 1.5 cm (5/8 in), hem 4 cm (1 5/8 ins), lining 1.5 cm (5/8 in).



Cut from a double layer of fabric, right side facing in.

Cutting Out

Main fabric:

1 front, on a fold 1x

2 back 2x

5 neck band, on a fold 2x

Draft the following pieces NOT included in the pattern:

a) belt, 73 – 77 – 81 – 85 – 89 cm (28 3/4 – 30 1/2 – 32 – 33 1/2 – 35 ins) long, 9 cm (3 1/2 ins) wide, finished width 4.5 cm (1 3/4 ins),

b) bow, 83 cm (32 3/4 ins) long, 9 cm (3 1/2 ins) wide, finished width 4.5 cm (1 3/4 ins).

Lining:

pieces 1 and 2.

Interfacing: See shaded area on pattern layout. Iron Vilene Bias Tape/ stay tape to wrong sides of neck and armhole edges of lining pieces.

Sewing

Stitch bust darts. Press darts down.

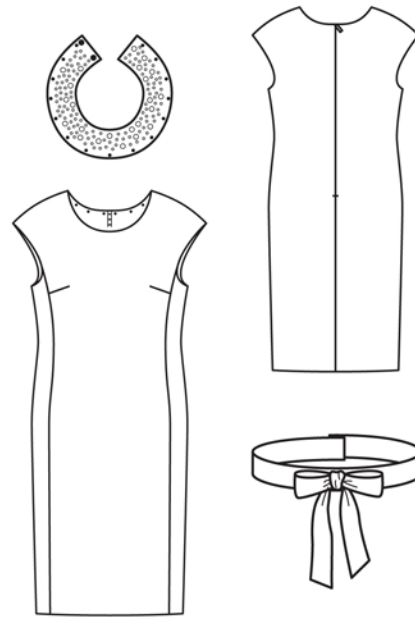
Sew invisible zip to back slit edges, see the „Helpful Hint“ on next page. Stitch centre back seam from lower edge to zip. Press seam allowances open.

Stitch forwarded side seams (seam number 3). Clip seam allowances of front at each seam mark. Press seam allowances open.

Stitch darts and seams of lining as described for main fabric.

Neck and armhole edges, shoulder seams: Pin lining to front and back pieces, right sides facing. At zip slit, turn lining back, approx. 5 mm (3/16 in) before marked seam line, and pin to neck. Turn allowances on slit edges of dress to outside and pin in place, over lining. Stitch along neck and armhole edges, beginning and ending 2 cm (3/4 in) below each shoulder seam line. Trim seam allowances and clip curves close to lines of stitching. On lining and on back slit edge, turn allowances to inside. Stitch shoulder seams, not catching lining. Press seam allowances open. At back edges, reach between main fabric and lining to first pull out edges of one shoulder. Stitch shoulder seam of lining. Press seam allowances open. This will be easier if you slip the handle of a wooden spoon under the seam. Pull front slightly further out and stitch remaining open edges of neck and armhole closed. Push shoulder back in place again. Pull other shoulder out, stitch seam of lining and press, stitch edges closed, and push shoulder in place again. Press neck and armhole edges. Sew lining to zip tapes.

Press hem allowance to inside and sew in place by hand. Hem lining – it should be approx. 2 cm (3/4 in) shorter than the dress.



Neck band: Stitch band pieces together, right sides facing, leaving an opening in seam, approx. 5 cm (2 ins) long, for turning. Trim seam allowances, trimming corners diagonally. Turn band right side out and press. Sew seam opening closed. Hand baste a line 1.5 cm (5/8 in) from lower edge to make placement line visible on right fabric side. Lay left band end on right band end, overlapping 1.5 cm (5/8 in). Sew large snap fasteners in place. Lay band under dress neck (placement line) and fasten with small snaps. String the beads and sew in place, following the step-by-step instructions on page 33 of the magazine.

Fold belt lengthwise, right side facing in. Stitch edges together, leaving a section of seam open, for turning. Turn belt right side out. Sew seam opening closed. Fasten belt with hooks and thread loops. Fold piece for bow lengthwise, right side facing in. Trim ends at angles. Stitch edges together, leaving a section of seam open, for turning. Trim seam allowances, trimming corners diagonally. Turn bow right side out and press edges. Sew seam opening closed. Tie bow and sew to centre front of belt.



These special zippers come in various lengths. The zipper should be at least 2 cm (3/4 in) longer than the slit. It is sewn in place before the seam below the slit is stitched. A special presser foot is required to sew the zipper in place.

Sewing the zipper in place:

Open the zipper and push the coil back with your thumbnail to reveal the seam marking between the tape and the coil. Place the open zipper right side down on the right fabric side of one slit edge.

In order to stitch the zipper in place exactly along the marked seam line, you must first calculate the distance between the tape edge and the fabric edge as follows: width of seam allowance minus 1 cm (3/8 in) tape width = distance from edge of fabric. This will yield a value of 5 mm (3/16 in) if the width of the seam allowance is 1.5 cm (5/8 in).

Pin the top end of the zipper tape in place, the calculated distance from the edge of the fabric. The bottom end of the zipper will extend past the marked end of the slit. Place the presser foot on the zipper so that the coil is in the notch to the right of the needle (1). Stitch zipper in place, from the top to the marked end of the slit. Close zipper.

Place the other zipper tape face down on the opposite slit edge and pin in place at the top. Open zipper again. Place the presser foot on the top end of the zipper so that the coil is in the notch to the left of the needle (2). Sew the zipper in place, from the top to the end of the slit. Close zipper.

Now stitch the seam below the zipper, from bottom to top. Turn the loose lower end of the zipper out of the way, over the seam allowance. Stitch as close as possible to the last stitches of the zipper seams. Trim away excess zipper and bind the end with a scrap of fabric.