

130 Dress

Burda sizes 44, 46, 48, 50, 52

Length from waist 65 cm (25 3/4 ins)

3/4 – sleeves, about 50 cm (20 ins) long

Materials

Seersucker,

width: 135 cm (53 in)

length: 1.90 – 1.90 – 2.50 – 2.50 – 2.50 m

(2 1/8 – 2 1/8 – 2 3/4 – 2 3/4 – 2 3/4 yds).

Panne velvet,

width: 150 cm (59 in)

length: 0.65 m (7/8 yd) for all sizes.

A small piece of tulle, 2 cm x 90 cm (3/4 in x 36 ins).

Cord for the piping.

Interfacing.

1 invisible zip, 60 cm (24 ins) long.

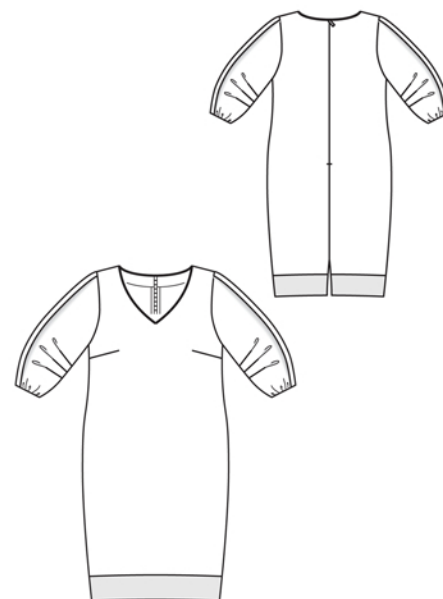
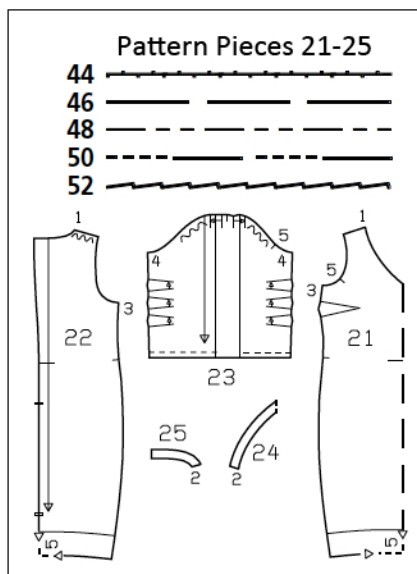
Elastic, 5 mm (3/16 in) wide and 0.65 – 0.65 – 0.70 – 0.75 – 0.75 m (3/4 – 3/4 – 7/8 – 7/8 – 7/8 yd) long.

Recommended fabrics: Lightweight, softly draping dress fabrics, combined with velvet.

Preparations

Print the pattern out on letter or A4 sized paper. It is **very important** to not scale or fit any of the pages, you must print the document in **actual size**. Your pattern will print on multiple pages, which you will then tile together. Arrange the sheets on a large, hard and flat surface matching up the numbers and letters (i.e. 6A to 6A). Cut or fold one of the sides and match the edge to it's corresponding side. Then, tape down in place so paper is secure.

Trace the pattern pieces from the pattern sheet following the lines and markings for your size. Trace the bands for pieces 21 and 22 each as a separate pattern piece.



burda style magazine patterns do not have seam allowance included.

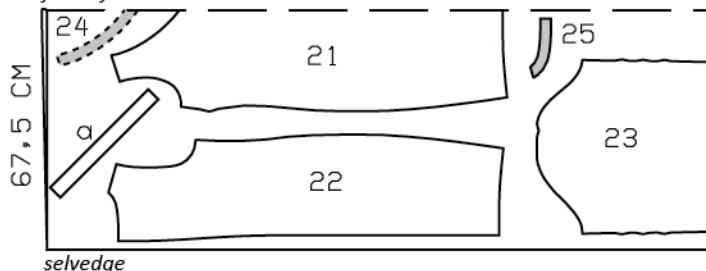
Seam and hem allowance to be added:

Seams and edges 1.5 cm (5/8 in), hem 4 cm (1 5/8 ins) (also on bands), back slit edges 3 cm (1 1/4 ins) – flare hem allowances.

Seersucker, 135cm wide

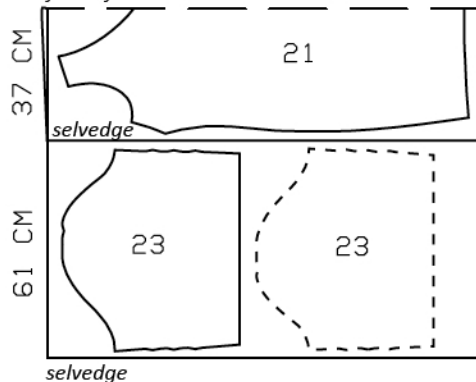
Sizes 44, 46

fabric fold



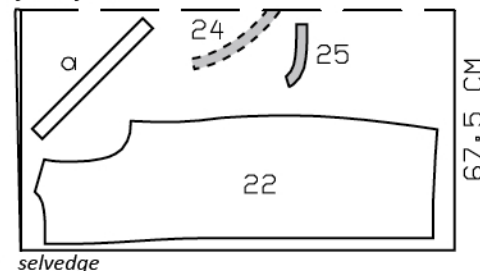
Sizes 48-52

fabric fold



Fold the fabric as shown in the pattern layout. Right side faces in on a double layer of fabric. Right side faces up on a single layer. Cut right and left sleeves as opposites. Note direction of nap on panne velvet.

fabric fold



Cutting Out

Seersucker:

- 21 front, on a fold 1x
- 22 back 2x
- 23 sleeve 2x
- 24 front neck facing, on a fold 1x
- 25 back neck facing 2x

Draft the following pieces NOT included in the pattern:

- a) 2 facing strips (sleeves), cut on bias, 38 – 39 – 40 – 42 – 44 cm (15 – 15 1/2 – 15 3/4 – 16 1/2 – 17 1/4 ins) long, 4 cm (1 5/8 ins) wide (incl. allowances).

Velvet:

- 21 front hem band, on a fold 1x
- 22 back hem band 2x

- b) bias piping strip, 80 – 81 – 82 – 84 – 85 cm (31 1/2 – 32 – 32 1/2 – 33 – 33 1/2 ins) long, 3 cm (1 1/4 ins) wide (incl. allowances).

Interfacing: Iron to facing pieces.

Sewing

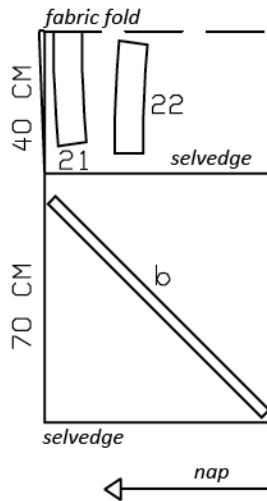
Stitch bust darts. Press darts up. Stitch side seams and shoulder seams. Stitch shoulder seams of neck facing.

Sew invisible zip to back opening edges, see the "Helpful Hint" on next page. Stitch centre back seam from vent to zip.

Piping: Fold the bias strip in half lengthwise, wrong side facing in. Lay cord for piping inside the fold. Use the zipper foot of your sewing machine to stitch close to the piping cord.

Neck edge: Lay tulle strip on top side of piping and baste. Now baste piping with tulle strip to neck edge, face down, so that piping cord lies on garment piece. Clip seam allowance of front at centre front and fold ends of piping tape toward seam allowance, next to teeth of zip. Work from inside to stitch piping in place, along line of neck edge (zipper foot). Pin facing right sides together with neck edge. Turn ends of facing back, 5 mm (3/16 in) before marked seam line, and pin to neck edge. Fold allowances on

Panne velvet,
150 cm wide
Sizes 44 – 52



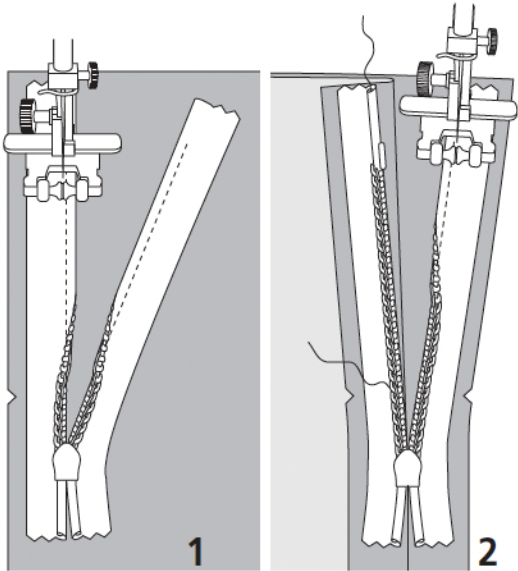
opening edges to outside and pin to neck edge. Stitch exactly along line of piping joining seam. Trim seam allowances. Clip facing allowance and piping tape at centre front. Lay facing up and stitch to seam allowances, close to seam. Turn allowances on opening edges and facing to inside. Turn in narrow back edges of facing and sew to zip tapes. Sew facing to shoulder seams. Press neck edge.

Stitch side seams of hem band. Stitch hem band to lower edge of dress, along marked line, so that band points up. Lay band down over joining seam, press, and baste to hem allowance. Press hem allowance to inside and sew in place by hand. Press allowances on edges of slit to inside. Sew allowances on edges of slit to hem allowance.

Fold sleeves at centre, with wrong side facing in, and stitch together along marked lengthwise stitching lines. Unfold sleeves. Fold pleats in direction of arrows and press. Baste top and bottom of pleats in place. Work from inside to stitch side pleats, up to arrows. Lay pleats in direction of arrows, press, and baste. Gather lower edge of each sleeve to 35 – 36 – 37 – 39 – 41 cm (13 3/4 – 14 1/4 – 14 1/2 – 15 1/2 – 16 1/4 ins).

Stitch sleeve seams. Turn in ends of facing strips to match lower edges of sleeves. Fold facing strips in half lengthwise and press, wrong side facing in. Work from right side to stitch folded strips to lower edges of sleeves, so that fold edge lies on garment piece, 1 cm (3/8 in) wide, and ends meet sleeve seam. Lay strip down and stitch to seam allowance, close to seam. Turn facing strip to inside. Press edges of sleeve. Pull elastic into facing strip and sew ends together for a circumference of 30 – 31 – 32 – 33.5 – 35 cm (12 – 12 1/4 – 12 3/4 – 13 1/4 – 13 3/4 ins).

Set in sleeves, easing sleeve caps.



These special zippers come in various lengths. The zipper should be at least 2 cm (3/4 in) longer than the slit. It is sewn in place before the seam below the slit is stitched. A special presser foot is required to sew the zipper in place.

Sewing the zipper in place:

Open the zipper and push the coil back with your thumbnail to reveal the seam marking between the tape and the coil. Place the open zipper right side down on the right fabric side of one slit edge.

In order to stitch the zipper in place exactly along the marked seam line, you must first calculate the distance between the tape edge and the fabric edge as follows: width of seam allowance minus 1 cm (3/8 in) tape width = distance from edge of fabric. This will yield a value of 5 mm (3/16 in) if the width of the seam allowance is 1.5 cm (5/8 in).

Pin the top end of the zipper tape in place, the calculated distance from the edge of the fabric. The bottom end of the zipper will extend past the marked end of the slit. Place the presser foot on the zipper so that the coil is in the notch to the right of the needle (1). Stitch zipper in place, from the top to the marked end of the slit. Close zipper.

Place the other zipper tape face down on the opposite slit edge and pin in place at the top. Open zipper again. Place the presser foot on the top end of the zipper so that the coil is in the notch to the left of the needle (2). Sew the zipper in place, from the top to the end of the slit. Close zipper.

Now stitch the seam below the zipper, from bottom to top. Turn the loose lower end of the zipper out of the way, over the seam allowance. Stitch as close as possible to the last stitches of the zipper seams. Trim away excess zipper and bind the end with a scrap of fabric.