

### 127 Dress

Burda sizes 44, 46, 48, 50, 52

Length from waist 66 cm (26 ins)

3/4 – sleeves, about 48 cm (19 ins) long

### Materials

Note: The sheer original fabric is layered for this style. Just one layer of fabric is used for the yoke and sleeves. The inside pieces are referred to as lining pieces in the instructions.

Chiffon,  
width: 140 cm (55 in)  
length: 6.10 m (6 3/4 yds) for all sizes.

1 invisible zip, 60 cm (24 ins) long.

Recommended fabrics: Lightweight, softly draping dress fabrics.

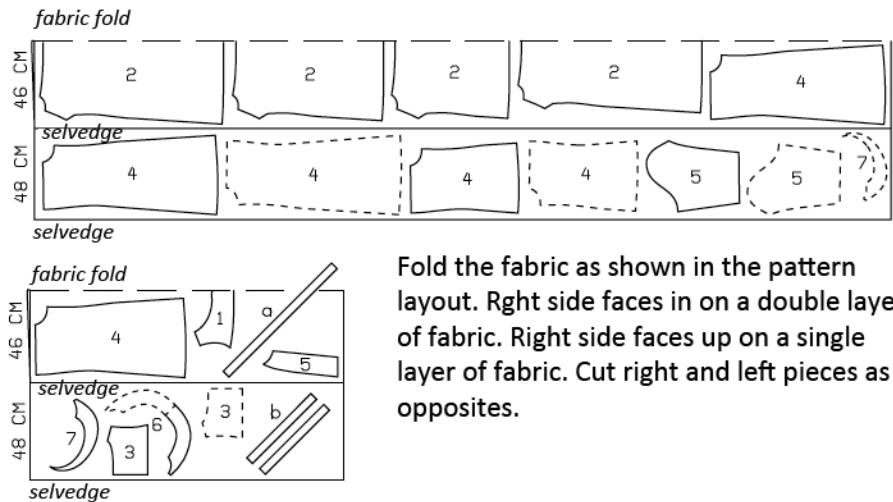
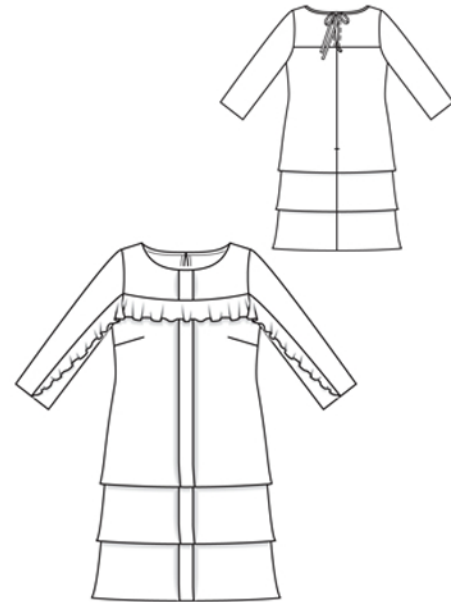
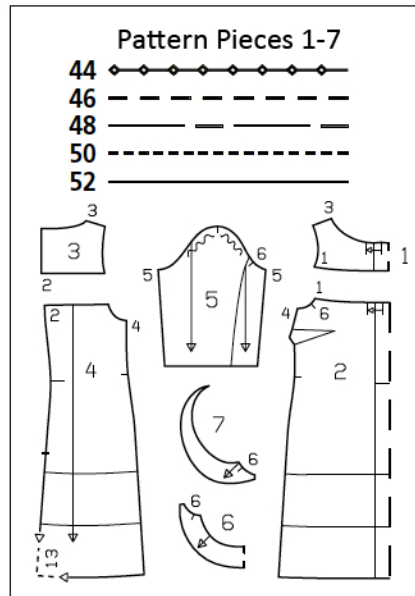
### Preparations

Print the pattern out on letter or A4 sized paper. It is **very** important to not scale or fit any of the pages, you must print the document in actual size. Your pattern will print on multiple pages, which you will then tile together. Arrange the sheets on a large, hard and flat surface matching up the numbers and letters (i.e. 6A to 6A). Cut or fold one of the sides and match the edge to it's corresponding side. Then, tape down in place so paper is secure.

Trace the pattern pieces from the pattern sheet following the lines and markings for your size. Note different hem lines on upper, middle, and lower front and back pieces. Cut sleeves apart on marked seam line. Cut front lining piece without pleat – i.e. fold paper pattern piece on marked pleat stitching line and place on the fabric fold.

**burda style magazine patterns do not have seam allowance included.**

Seam and hem allowance to be added:  
Seams, edges and hem 1.5 cm (5/8 in).



Fold the fabric as shown in the pattern layout. Right side faces in on a double layer of fabric. Right side faces up on a single layer of fabric. Cut right and left pieces as opposites.

### Cutting Out

- |                           |    |                            |    |
|---------------------------|----|----------------------------|----|
| 1 front yoke, on a fold   | 1x | 4 lower back               | 2x |
| 2 lower front, on a fold  | 1x | and as lining              | 2x |
| and as lining, on a fold  | 1x | 4 middle back              | 2x |
| 2 middle front, on a fold | 1x | 4 upper back               | 2x |
| 2 upper front, on a fold  | 1x | 5 sleeve, cut apart each   | 2x |
| 3 back yoke               | 2x | 6 front flounce, on a fold | 1x |

Draft the following pieces NOT included in the pattern:

a) bias binding strip for neck edge, 70 – 72 – 73 – 75 – 76 cm (27 3/4 – 28 1/2 – 28 3/4 – 29 3/4 – 30 ins) long, 4.5 cm (1 3/4 ins) wide (incl. allowances),

b) 2 tie bands, cut on bias, 45 cm (18 ins) long, 4 cm (1 5/8 ins) wide (incl. allowances).

## Sewing

Stitch bust darts in fronts and lining fronts. Press darts down.

Fold upper, middle and lower fronts along centre front, wrong side facing in, and stitch along marked stitching lines. Unfold fronts. Fold pleats in direction of arrows and press. Baste to upper and lower edges.

Neaten outer edge of flounces (longer edge) with closely spaced zigzag stitching: Press allowance to wrong side. Work from right side to stitch along fold edge with closely spaced zigzag stitching. Carefully trim allowance on inside, close to stitching.

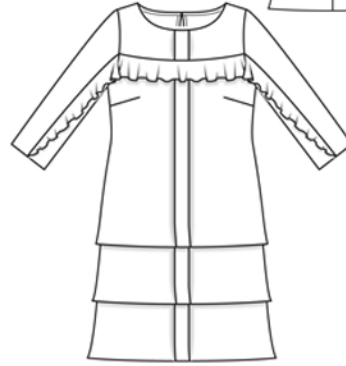
Baste front flounce to upper edge of upper front, with wrong side facing right side. Baste side ends of flounce to armhole and side seam edges of front.

Stitch side seams of upper, middle and lower units. Stitch side seams of lining units. Trim seam allowances to 7 mm (1/4 in) wide, neaten together, and press onto back.

Lay upper, middle and lower units and lining units each together, with wrong side facing right side. Baste together on upper edges and armhole edges. Baste back edges together above slit mark.

Sew invisible zip to back opening edges, see the "Helpful Hint" on next page. Clip seam allowances at end of slit on the three outer layers of fabric. Stitch centre back seam of each fabric layer, stitching from lower edge to zip opening.

Sew and press pleat at centre of front yoke as instructed for front piece. Stitch shoulder seams, beginning and ending stitching exactly on marked neck edge. Turn allowances on back edges of yoke to inside, turn in to a width of 7 mm (1/4 in), and stitch.



Neck edge and tie bands: Fold binding strip in half lengthwise and press, right side facing out. Pin folded binding strip to inside neck edge, so that fold edge of strip lies on garment piece, 1.5 cm (5/8 in) wide. Stitch along neck edge. Lay binding strip up and turn ends in. Fold each tie band in half lengthwise and press, wrong side facing in. Unfold band again. Now fold each long edge to the pressed crease, fold in half lengthwise, and press again. Edgestitch fold edges together. Lay tie bands on neck edge, on back ends of binding, and stitch. Fold binding strip out over neck edge and baste over joining seam. Edgestitch binding in place.

Pin back yokes to back pieces, leaving allowances of back extending at slit edges (with zip). Lay back allowances to outside and pin to upper back edge, over yoke. Stitch. Turn allowances on slit edges to inside, lay yokes up, and press seam allowances down. Stitch front yoke to front. Press seam allowances down.

Baste sleeve flounces to section seam edges of narrow sleeve pieces, with wrong side facing right side. Stitch section seams of sleeves, beginning and ending exactly at marked upper edge of sleeve (attachment edge). Clip seam allowances of flounces to end of seam. Baste upper ends of sleeve flounces to upper and side sleeve seam edges. Stitch sleeve seams. Press sleeve hem allowances to inside, turn in, and stitch.

Set in sleeves, easing sleeve caps.

Turn under all hem allowances on dress layers and stitch narrow hems.



These special zippers come in various lengths. The zipper should be at least 2 cm (3/4 in) longer than the slit. It is sewn in place before the seam below the slit is stitched. A special presser foot is required to sew the zipper in place.

### **Sewing the zipper in place:**

Open the zipper and push the coil back with your thumbnail to reveal the seam marking between the tape and the coil. Place the open zipper right side down on the right fabric side of one slit edge.

In order to stitch the zipper in place exactly along the marked seam line, you must first calculate the distance between the tape edge and the fabric edge as follows: width of seam allowance minus 1 cm (3/8 in) tape width = distance from edge of fabric. This will yield a value of 5 mm (3/16 in) if the width of the seam allowance is 1.5 cm (5/8 in).

Pin the top end of the zipper tape in place, the calculated distance from the edge of the fabric. The bottom end of the zipper will extend past the marked end of the slit. Place the presser foot on the zipper so that the coil is in the notch to the right of the needle (1). Stitch zipper in place, from the top to the marked end of the slit. Close zipper.

Place the other zipper tape face down on the opposite slit edge and pin in place at the top. Open zipper again. Place the presser foot on the top end of the zipper so that the coil is in the notch to the left of the needle (2). Sew the zipper in place, from the top to the end of the slit. Close zipper.

Now stitch the seam below the zipper, from bottom to top. Turn the loose lower end of the zipper out of the way, over the seam allowance. Stitch as close as possible to the last stitches of the zipper seams. Trim away excess zipper and bind the end with a scrap of fabric.