

### 128 Dress

Burda sizes 44, 46, 48, 50, 52

Length from waist 65 cm (25 3/4 ins)

### Materials

Reversible satin (one side shiny, one side matte)  
width: 135 cm (53 in)  
length: 3.00 – 3.00 – 4.00 – 4.00 – 4.00 m  
(3 3/8 – 3 3/8 – 4 3/8 – 4 3/8 – 4 3/8 yds).

Interfacing.

1 beaded appliqué, 13 cm x 4 cm (5 1/4 x 1 5/8 ins).

1 invisible zip, 22 cm (9 ins) long.

4 sew-on snap fasteners and 2 buttons.

Recommended fabrics: Lightweight, softly draping dress fabrics. Use only reversible fabrics – one side shiny and one side matte.

### Preparations

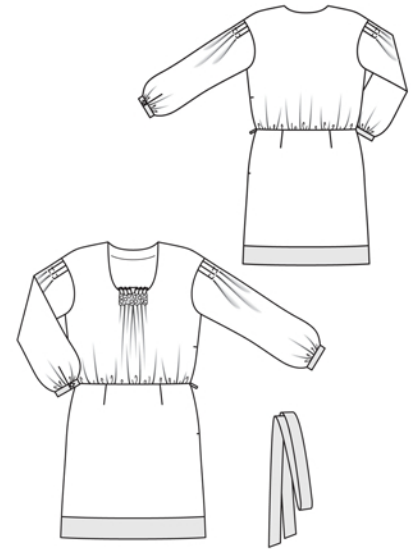
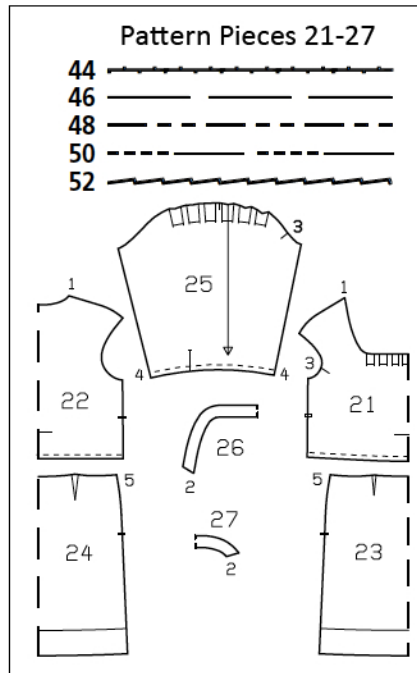
Print the pattern out on letter or A4 sized paper. It is **very important** to not scale or fit any of the pages, you must print the document in **actual size**. Your pattern will print on multiple pages, which you will then tile together. Arrange the sheets on a large, hard and flat surface matching up the numbers and letters (i.e. 6A to 6A). Cut or fold one of the sides and match the edge to it's corresponding side. Then, tape down in place so paper is secure.

Trace the pattern pieces from the pattern sheet following the lines and markings for your size.

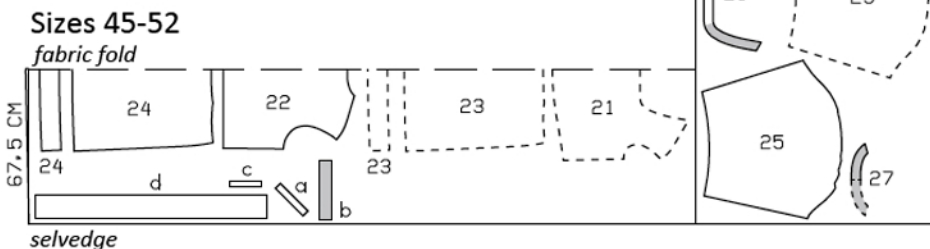
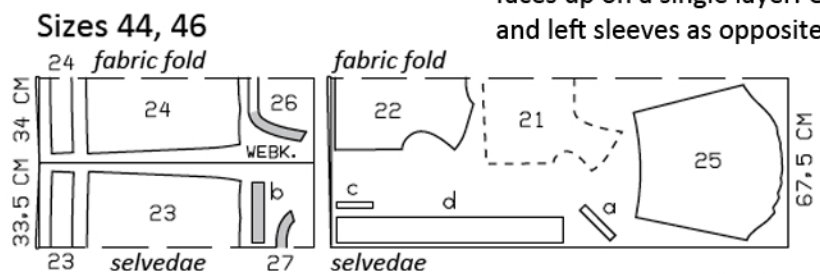
Trace the hem bands from pieces 23 and 24 as separate pattern pieces.

**burda style magazine patterns do not have seam allowance included.**

Seam and hem allowance to be added:  
Seams and edges 1.5 cm (5/8 in), slit edge (piece 21) 3 cm (1 1/4 ins), hem 4 cm (1 5/8 ins) (also on hem bands).



Fold the fabric as shown in the pattern layout. Right side faces in on a double layer of fabric. Right side faces up on a single layer. Cut right and left sleeves as opposites.



### Cutting Out

- 21 front, on a fold 1x
- 22 back, on a fold 1x
- 23 front skirt panel, on a fold 1x
- front hem band, on a fold 1x
- 24 back skirt panel, on a fold 1x
- back hem band, on a fold 1x
- 25 sleeve 2x
- 26 front neck facing, on a fold 1x
- 27 back neck facing, on a fold 1x

Cutting out continued on next page.

## Cutting Out Continued...

Draft the following pieces NOT included in the pattern:

a) 2 bias binding strips for sleeve vents, 17 cm (6 3/4 ins) long, 3 cm (1 1/4 ins) wide (incl. allowance),

b) 2 cuffs, 24 – 24.5 – 25 – 25.5 – 26 cm (9 1/2 – 9 3/4 – 10 – 10 1/8 – 10 1/4 ins) long, 5 cm (2 ins) wide, finished width 2.5 cm (1 in),

c) fastening underlap piece, 14 cm (5 1/2 ins) long, 3 cm (1 1/4 ins) wide, finished width 1.5 cm (5/8 in),

d) tie belt, a total of 180 – 185 – 190 – 195 – 200 cm (71 – 72 3/4 – 75 – 76 3/4 – 78 3/4 ins) long, 10 cm (4 ins) wide, finished width 5 cm (2 ins).

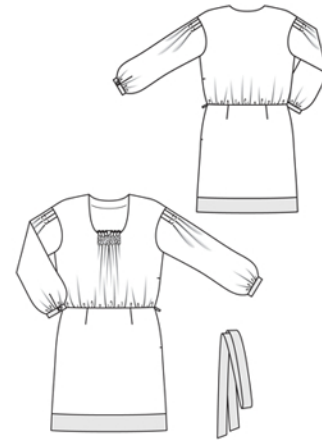
Use the shiny satin side as the right fabric side of the hem bands, cuffs, and tie belt. Use the matte side of the satin as the right fabric side of the remaining pieces.

Interfacing: See pattern layout.

## Sewing

Stitch shoulder seams on bodice and on neck facing. Stitch neck facing right sides together with neck edge. Trim seam allowances. Lay facing up and stitch to seam allowances, close to seam. Turn facing to inside. Press neck edge. Fold pleats in front neck edge in direction of arrows and baste. Topstitch front neck edge in area of the pleats, 2 cm (3/4 in) and 3 cm (1 1/4 ins) from edge. Sew appliqué to front neck edge, over stitching, by hand.

Slash sleeve vents as marked. Spread slash edges open to a straight line and stitch to one long of binding strip as narrowly as possible. Press binding strip over joining seam into vent, turn in to 1 cm (3/8 in) wide, turn to inside, and sew to joining seam. Mitre binding at top of vent, on inside. Lay binding on front edges of vents to inside and baste lower edge in place. Finished width of binding 7 mm (1/4 in).



Fold pleats in sleeves in direction of arrows and baste. Hand-sew running stitches across pleats, level with pleat arrows and twice more, above first line of stitching, spaced 1 cm (3/8 in) apart (stitch length and spacing: 5 mm/ 3/16 in). Stitch sleeves to edges of armholes. Press allowances away from sleeves.

Stitch side seams and sleeve seams as continuous seams, leaving slit open in left side seam. Gather lower edges of sleeves to fit edges of cuffs.

Stitch cuffs to lower edges of sleeves. Press seam allowances of joining seams and of other long edges of cuffs onto cuffs. Fold cuffs lengthwise, right side facing in, and stitch across ends. Turn right side out. Baste inside edges in place. Topstitch cuffs close to joining seams. Work one button-hole in front end of each cuff.

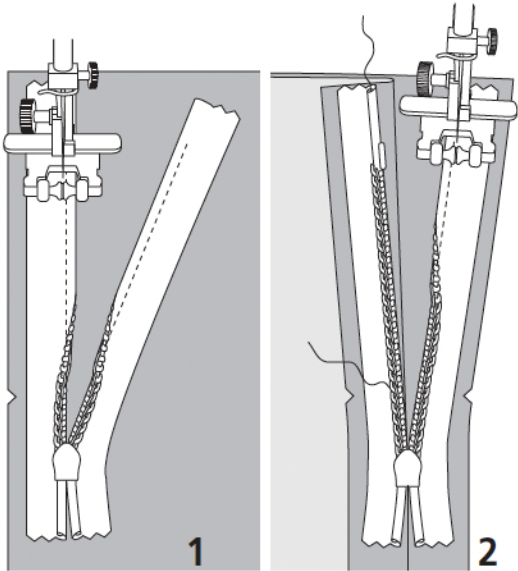
Fold underlap piece lengthwise, right side facing in. Stitch across ends. Turn underlap right side out and press. Stitch underlap to back slit edge. Press underlap forward.

Stitch darts in skirt panels and press toward centre. Stitch right side seam. Sew invisible zip to left slit edges, see the “Helpful Hint” on next page. Stitch left side seam from lower edge to zip.

Gather lower edge of dress bodice to match edge of skirt. Stitch skirt to bodice. Press seam allowances up. On left slit, press allowance of front to inside, turn half in, and sew to skirt joining seam. On back slit edge, sew seam allowance of skirt joining seam to underlap joining seam. Sew upper snap halves to wrong side of front slit edge, evenly spaced. Sew bottom halves of snaps to underlap, to match.

Stitch side seams of hem band. Stitch hem band to lower edge of dress, along marked line – hem band points up. Lay band down over joining seam, press, and baste to hem allowance. Neaten edges of hem allowances together, press to inside, and sew in place by hand.

Fold tie belt lengthwise, right side facing in. Trim ends at angles. Stitch edges together, leaving a section of seam open for turning. Turn belt right side out. Sew seam opening closed.



These special zippers come in various lengths. The zipper should be at least 2 cm (3/4 in) longer than the slit. It is sewn in place before the seam below the slit is stitched. A special presser foot is required to sew the zipper in place.

### **Sewing the zipper in place:**

Open the zipper and push the coil back with your thumbnail to reveal the seam marking between the tape and the coil. Place the open zipper right side down on the right fabric side of one slit edge.

In order to stitch the zipper in place exactly along the marked seam line, you must first calculate the distance between the tape edge and the fabric edge as follows: width of seam allowance minus 1 cm (3/8 in) tape width = distance from edge of fabric. This will yield a value of 5 mm (3/16 in) if the width of the seam allowance is 1.5 cm (5/8 in).

Pin the top end of the zipper tape in place, the calculated distance from the edge of the fabric. The bottom end of the zipper will extend past the marked end of the slit. Place the presser foot on the zipper so that the coil is in the notch to the right of the needle (1). Stitch zipper in place, from the top to the marked end of the slit. Close zipper.

Place the other zipper tape face down on the opposite slit edge and pin in place at the top. Open zipper again. Place the presser foot on the top end of the zipper so that the coil is in the notch to the left of the needle (2). Sew the zipper in place, from the top to the end of the slit. Close zipper.

Now stitch the seam below the zipper, from bottom to top. Turn the loose lower end of the zipper out of the way, over the seam allowance. Stitch as close as possible to the last stitches of the zipper seams. Trim away excess zipper and bind the end with a scrap of fabric.