

126B Dress

Burda sizes 44, 46, 48, 50, 52

Length from waist 68 cm (26 3/4 ins)

Materials

Silk lamé,
width: 140 cm (55 in)
length: 2.15 – 2.15 – 2.20 – 2.20 – 2.20 m
(2 1/2 yds).

Silk satin for the lining,
width: 140 cm (55 in)
length: 2.50 m (2 3/4 yds) for all sizes.

Interfacing.

1 invisible zip, 40 cm (16 ins) long.

Belt: beaded tulle ribbon, 5 cm (2 ins) wide and
1.00 – 1.05 – 1.10 – 1.15 – 1.20 m (1 1/8 – 1 1/4
– 1 1/4 – 1 3/8 – 1 3/8 yds) long.

1 sew-on snap fastener.

Recommended fabrics: Lightweight dress fabrics with some body.

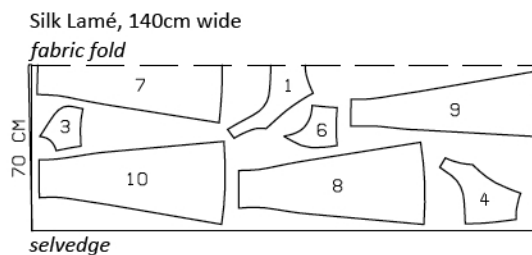
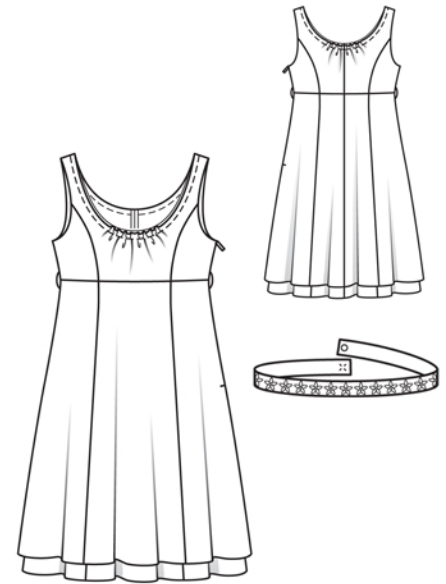
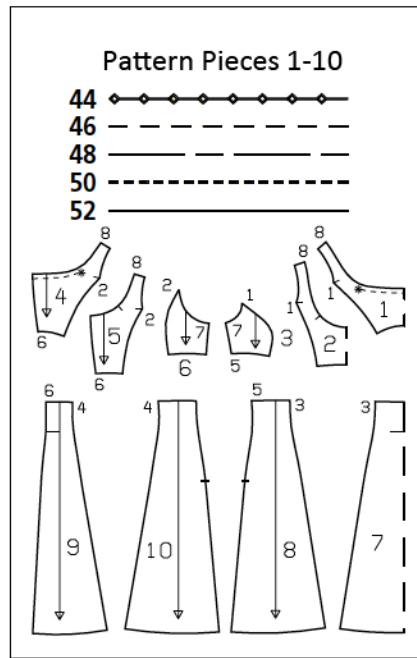
Preparations

Print the pattern out on letter or A4 sized paper. It is **very important** to not scale or fit any of the pages, you must print the document in **actual size**. Your pattern will print on multiple pages, which you will then tile together. Arrange the sheets on a large, hard and flat surface matching up the numbers and letters (i.e. 6A to 6A). Cut or fold one of the sides and match the edge to it's corresponding side. Then, tape down in place so paper is secure.

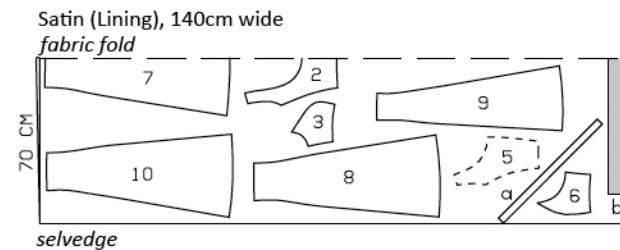
Trace the pattern pieces from the pattern sheet following the lines and markings for the correct size and the correct style (126B). This pattern also includes pattern pieces, lines and markings for style 126A that should be ignored.

burda style magazine patterns do not have seam allowance included. To be added:

Seams and edges 1.5 cm (5/8 in), no allowance at hem edges. Cut lining pieces with 1.5 cm (5/8 in) seam allowances and 4 cm (1 5/8 ins) hem allowances.



Cut from a double layer of fabric, right side facing in.



Cutting Out

Silk lamé:

1 centre front, on a fold 1x
3 side front 2x
4 centre back 2x
6 side back 2x
7 centre front skirt panel, on a fold 1x
8 side front skirt panel 2x
9 centre back skirt panel 2x
10 side back skirt panel 2x

Satin (lining):

2 centre front lining piece, on a fold 1x
3 side front lining piece 2x
5 centre back lining piece 2x
6 side back lining piece 2x
7 centre front skirt lining panel, on a fold 1x
8 side front skirt lining panel 2x
9 centre back skirt lining panel 2x
10 side back skirt lining panel 2x

Cutting Out Continued...

Draft the following pieces NOT included in the pattern:

a) 2 bias strips for armholes, 53 – 54 – 56 – 57 – 59 cm (21 – 21 1/4 – 22 1/4 – 22 1/2 – 23 1/4 ins) long, 3 cm (1 1/4 ins) (incl. allowance),

b) belt, 93 – 97 – 103 – 109 – 115 cm (36 3/4 – 38 1/4 – 40 3/4 – 43 – 45 1/4 ins) long, 6 cm (2 1/2 ins) wide, finished width 3 cm (1 1/4 ins).

Interfacing: Iron to the belt. Iron strips of interfacing, 1.5 cm (5/8 in) wide, to neck edges of lining pieces.

Sewing

Stitch centre back seam, front and back section seams, and shoulder seams of dress bodice. Press section seam allowances toward centre and press remaining seam allowances open. Sew lining as for dress bodice.

Press allowance on neck edges of outer fabric and lining to inside, 5 mm (3/16 in) wide. Neaten edge of the now 1 cm (3/8 in) wide allowance with closely spaced zigzag stitch. Carefully trim allowance on inside, close to stitching. On outer bodice, gather front and back neck edges on each side of marked seam line, between the asterisks, to 20 cm (8 ins). Lay wrong fabric side of dress bodice on right side of lining and baste edges together. Pin neck edges together. Stitch neck edges together, along seam line. Remove gathering threads.

Armholes: Fold bias strips in half lengthwise and press, right side facing out. Stitch folded bias strips to edges of armholes so that fold edges of strips lie on garment, 1 cm (3/8 in) past seam line. Trim seam allowances. Lay bias strips over seam allowances into armholes and stitch to seam allowances, close to seams. Turn strips to inside. Sew fold edges of strips to lining, by hand.

Stitch right side seam of dress bodice. Press seam allowances open. Turn top ends of seam allowances diagonally in and sew in place.



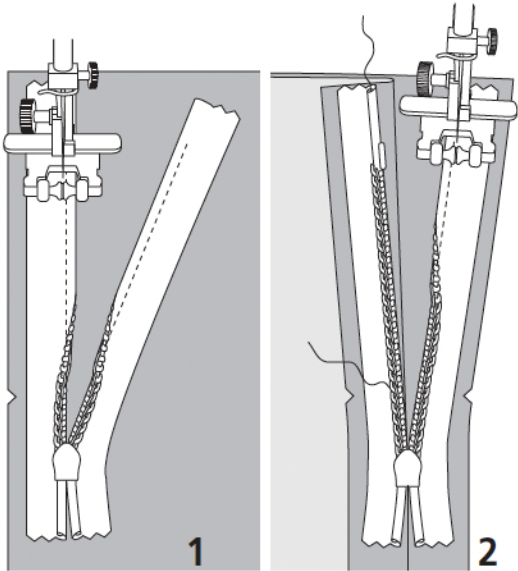
Stitch centre back seam, section seams, and right side seam of skirt. Stitch seams of skirt lining as for skirt. Lay skirt lining inside skirt, with right side facing wrong side. Baste to side edges, above slit mark, and to upper edge. Stitch skirt to dress bodice. Press seam allowances up.

Sew invisible zip to left opening edges, see the “Helpful Hint” on next page. Turn in top ends of zip tapes and sew in place with seam allowances at edge of armhole. Clip seam allowances of outer fabric at end of slit. Stitch left side seams of outer fabric and lining each separately.

Press hem allowance of lining to inside and sew in place by hand. Finish hem edge of dress with closely spaced zigzag stitching: Press allowance to wrong side. Work from right side to stitch along fold edge with closely spaced zigzag stitching. Carefully trim allowance on inside, close to stitching.
. Dress should be about 4 cm (1 5/8 ins) shorter than lining.

Crochet two thread loops, each about 4 cm (1 5/8 ins) long, and sew to dress, over skirt joining seam at right side seam and next to zip on the left.

Fold belt lengthwise, right side facing in. Stitch edges together, leaving a section of seam open, for turning. Turn belt right side out. Sew opening closed. Lay beaded tulle ribbon on belt, turn all edges under (2 cm / 3/4 in before end of belt on underlap), and sew in place by hand. Fasten the belt with the snap.



These special zippers come in various lengths. The zipper should be at least 2 cm (3/4 in) longer than the slit. It is sewn in place before the seam below the slit is stitched. A special presser foot is required to sew the zipper in place.

Sewing the zipper in place:

Open the zipper and push the coil back with your thumbnail to reveal the seam marking between the tape and the coil. Place the open zipper right side down on the right fabric side of one slit edge.

In order to stitch the zipper in place exactly along the marked seam line, you must first calculate the distance between the tape edge and the fabric edge as follows: width of seam allowance minus 1 cm (3/8 in) tape width = distance from edge of fabric. This will yield a value of 5 mm (3/16 in) if the width of the seam allowance is 1.5 cm (5/8 in).

Pin the top end of the zipper tape in place, the calculated distance from the edge of the fabric. The bottom end of the zipper will extend past the marked end of the slit. Place the presser foot on the zipper so that the coil is in the notch to the right of the needle (1). Stitch zipper in place, from the top to the marked end of the slit. Close zipper.

Place the other zipper tape face down on the opposite slit edge and pin in place at the top. Open zipper again. Place the presser foot on the top end of the zipper so that the coil is in the notch to the left of the needle (2). Sew the zipper in place, from the top to the end of the slit. Close zipper.

Now stitch the seam below the zipper, from bottom to top. Turn the loose lower end of the zipper out of the way, over the seam allowance. Stitch as close as possible to the last stitches of the zipper seams. Trim away excess zipper and bind the end with a scrap of fabric.