

126A Dress

Burda sizes 44, 46, 48, 50, 52

Length from waist 116 cm (45 3/4 ins)

Materials

Crosswise stretch silk satin,
width: 140 cm (55 in)
length: 4.50 m (5 yds) for all sizes.

Batiste for lining,
width: 140 cm (55 in)
length: 0.50 m (5/8 yd).

Vilene Bias Tape/stay tape.

1 invisible zip, 40 cm (16 ins) long.

Recommended fabrics: Lightweight, softly draping dress fabrics, with or without elastane.

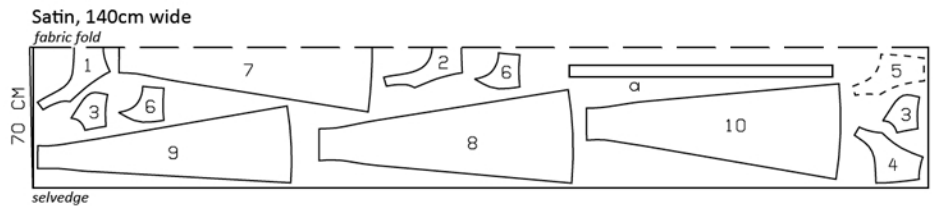
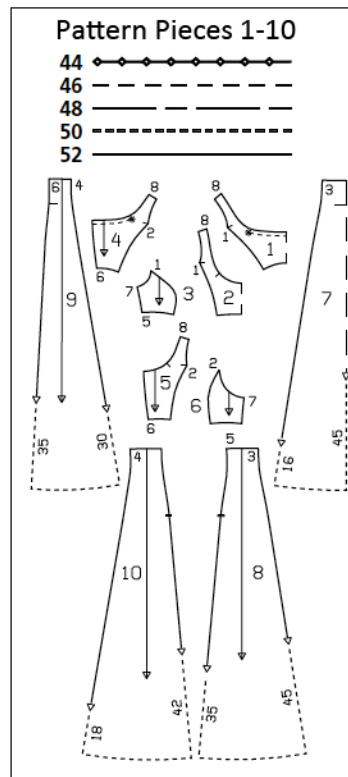
Preparations

Print the pattern out on letter or A4 sized paper. It is **very important** to not scale or fit any of the pages, you must print the document in **actual size**. Your pattern will print on multiple pages, which you will then tile together. Arrange the sheets on a large, hard and flat surface matching up the numbers and letters (i.e. 6A to 6A). Cut or fold one of the sides and match the edge to it's corresponding side. Then, tape down in place so paper is secure.

Trace the pattern pieces from the pattern sheet following the lines and markings for the correct size and the correct style (126A). This pattern also includes pattern pieces, lines and markings for style 126B that should be ignored.

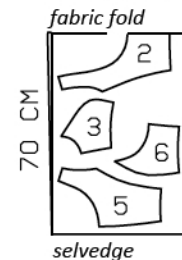
burda style magazine patterns do not have seam allowance included.

Seam and hem allowance to be added:
Seams and edges 1.5 cm (5/8 in), hem 4 cm (1 5/8 ins).



Batiste (lining),

140cm wide



Cut from a double layer of fabric, right side facing in.

Cutting Out

Satin:

- 1 centre front, on a fold 1x
- 2 inside centre front, on a fold 1x
- 3 side front 4x
- 4 centre back 2x
- 5 inside centre back 2x
- 6 side back 4x
- 7 centre front skirt panel, on a fold 1x
- 8 side front skirt panel 2x
- 9 centre back skirt panel 2x
- 10 side back skirt panel 2x

Draft the following piece NOT included in the pattern:

a) tie band, a total of 2.40 – 2.40 – 2.50 – 2.60 – 2.60 cm (94 1/2 – 94 1/2 – 98 1/2 – 102 1/4 – 102 1/4 ins) long, 6 cm (2 1/2 ins) wide, finished width 3 cm (1 1/4 ins).

Cutting Out Continued...**Batiste (lining):**

- 2 centre front lining piece,
on a fold 1x
- 3 side front lining piece 2x
- 5 centre back lining piece 2x
- 6 side back lining piece 2x

Vilene Bias Tape/stay tape: Iron to neck and armhole edges of lining pieces and iron to zip slit edges of outer pieces.

Sewing

Stitch centre seams on centre back and inside centre back.

Gather front and back neck edges to 20 cm (8 ins), between asterisks. Baste respective inside piece to wrong side of centre front and back. Treat these pieces as one layer of fabric from now on. Stitch front and back section seams of bodice. Trim allowances to 7 mm (1/4 in) wide and press toward centre. Stitch centre back seam of upper lining and also stitch front and back section seams.

Neck and armhole edges, shoulder seams: Pin lining pieces right sides together with front and back. Stitch along neck and armhole edges, beginning and ending 2 cm (3/4 in) below each shoulder seam line. Trim seam allowances and clip curves. Turn lining of front (not of back) to inside. Push front shoulder edges between the as yet unturned back shoulder edges – right fabric sides of front and back and of lining lie facing. Stitch shoulder seams of dress and lining. Pull front which lies inside and lining up and out a bit to press seams open. This will be easier if you slip the handle of a wooden spoon under the seams. Then stitch remaining open edges together. Pull front down out of the shoulder edges of the back and the back lining will turn itself to the inside. Stitch lining at neck and armhole edges to seam allowances, as far as possible, next to seam. Press neck edge.

Lay lining at edge of right armhole up. Stitch right side seams of dress bodice and lining as continuous seam. Lay lining down again.



Stitch centre back seam, section seams, and right side seam of skirt panels.

Stitch skirt to dress bodice, not catching lining. Press seam allowances up.

Lay lining up again at edge of left armhole. Sew invisible zip to left opening edges, see the "Helpful Hint" on next page. Stitch left side seam from lower edge to zip. Turn in top ends of zip tapes and sew in place. Turn in lining and sew to zip tapes and to skirt joining seam.

Press hem allowance to inside and sew in place by hand.

Crochet two thread loops, each about 4 cm (1 5/8 ins) long, and sew to dress, over skirt joining seam at right side seam and next to zip on the left. n Fold tie band lengthwise, right side facing in. Trim ends at an angle. Stitch edges together, leaving a section of seam open for turning. Turn tie band right side out. Sew seam opening closed.



These special zippers come in various lengths. The zipper should be at least 2 cm (3/4 in) longer than the slit. It is sewn in place before the seam below the slit is stitched. A special presser foot is required to sew the zipper in place.

Sewing the zipper in place:

Open the zipper and push the coil back with your thumbnail to reveal the seam marking between the tape and the coil. Place the open zipper right side down on the right fabric side of one slit edge.

In order to stitch the zipper in place exactly along the marked seam line, you must first calculate the distance between the tape edge and the fabric edge as follows: width of seam allowance minus 1 cm (3/8 in) tape width = distance from edge of fabric. This will yield a value of 5 mm (3/16 in) if the width of the seam allowance is 1.5 cm (5/8 in).

Pin the top end of the zipper tape in place, the calculated distance from the edge of the fabric. The bottom end of the zipper will extend past the marked end of the slit. Place the presser foot on the zipper so that the coil is in the notch to the right of the needle (1). Stitch zipper in place, from the top to the marked end of the slit. Close zipper.

Place the other zipper tape face down on the opposite slit edge and pin in place at the top. Open zipper again. Place the presser foot on the top end of the zipper so that the coil is in the notch to the left of the needle (2). Sew the zipper in place, from the top to the end of the slit. Close zipper.

Now stitch the seam below the zipper, from bottom to top. Turn the loose lower end of the zipper out of the way, over the seam allowance. Stitch as close as possible to the last stitches of the zipper seams. Trim away excess zipper and bind the end with a scrap of fabric.