

109A Dress

Burda sizes 38, 40, 42, 44, 46

Length from waist

sizes 38 – 42: 54 cm (21 3/4 ins),

sizes 44, 46: 57 cm (22 1/2 ins)

Materials

Crêpe satin

width: 135 cm (53 in)

length: black, 1.90 – 1.90 – 1.90 – 1.95 – 1.95 m

(2 1/8 – 2 1/8 – 2 1/8 – 2 1/4 – 2 1/4 yds)

white, 0.50 m (5/8 yd).

Interfacing.

2 buttons.

Recommended fabrics: Lightweight, softly draping fabrics.

Preparations

Print the pattern out on letter or A4 sized paper. It is **very important** to not scale or fit any of the pages, you must print the document in **actual size**. Your pattern will print on multiple pages, which you will then tile together. Arrange the sheets on a large, hard and flat surface matching up the numbers and letters (i.e. 6A to 6A). Cut or fold one of the sides and match the edge to it's corresponding side. Then, tape down in place so paper is secure.

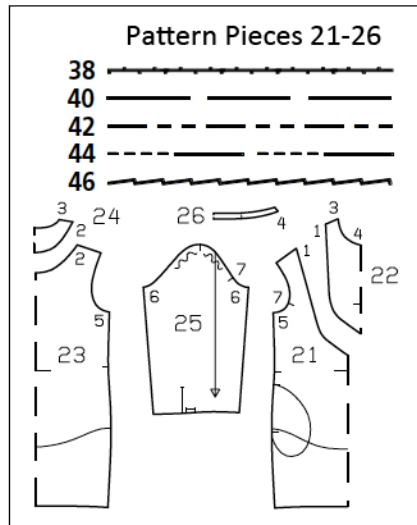
Trace the pattern pieces from the pattern sheet following the lines and markings for the correct size and the correct style (109A). This pattern also includes pattern pieces, lines and markings for other styles that should be ignored.

Trace the pocket piece from piece 21 as a separate pattern piece – it is the same for all sizes.

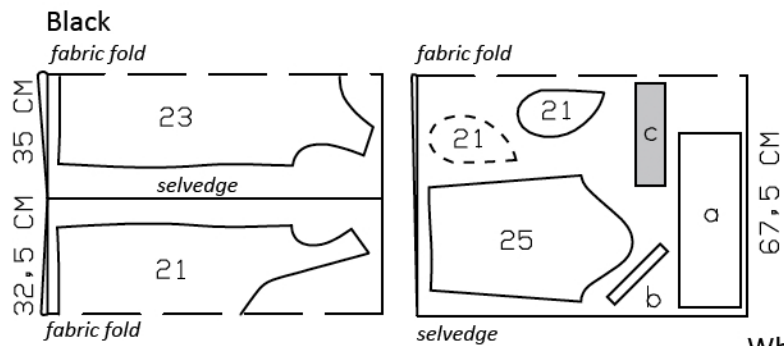
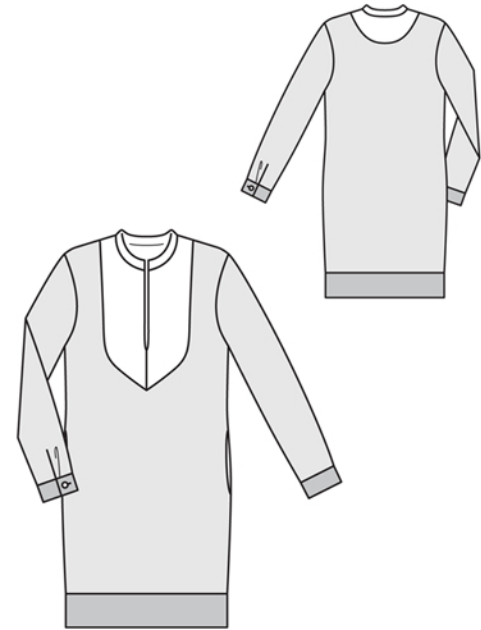
burda style magazine patterns do not have seam allowance included.

Seam and hem allowance to be added:

Seams and edges 1.5 cm (5/8 in) , hem of blouse 2 cm (3/4 in).



Fold the fabric as shown in the pattern layout, right side facing in.



Cutting Out

Black fabric:

21 front, on a fold 1x

pocket piece 4x

23 back, on a fold 1x

25 sleeve 2x

Draft the following pieces NOT included:

a) hem band, 2 pieces, each 49 – 51 – 53 – 55 – 57 cm (19 1/4 – 20 1/4 – 21 – 21 3/4 – 22 1/2 ins) long, 17 cm (6 3/4 ins) wide, finished width 8.5 cm (3 3/8 ins),

b) 2 bias binding strips for sleeve vents, 21 cm (8 3/8 ins) long, 3 cm (1 1/4 ins) wide (incl. allowance),

c) 2 cuffs with 3 cm (1 1/4 in) underlap, 29 – 29.5 – 30 – 30.5 – 31 cm (11 1/2 – 11 3/4 – 12 – 12 1/8 – 12 1/4 ins) long, 8 cm (3 1/4 ins) wide, finished width 4 cm (1 5/8 ins).

Use the shiny side of the fabric as right side of hem band and cuffs. Use the crêpe side as right fabric side of all other pieces.

Cutting continued on next page...

Cutting Out Continued...

White fabric:

22 front plastron piece, on a fold 2x

24 back plastron piece, on a fold 2x

26 standing collar, on a fold 2x

Use the shiny side as right fabric side.

Sewing

Stitch shoulder seams of front and back.

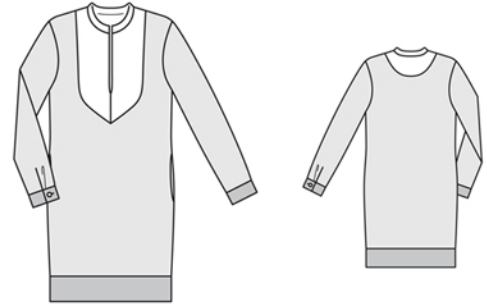
Lay front plastron pieces right sides facing. Stitch along centre front, below marking (fabric fold line). Fold each front plastron piece, wrong side facing in. Press seam and fold edges. Stitch shoulder seams of outer and inner plastron pieces. Lay plastron units wrong sides facing and baste edges together. Stitch plastron to front and back pieces, from centre front to centre back. Clip seam allowance of front at centre front. Then stitch second half of plastron in place. Press seam allowances onto front and back.

Stitch side seams but do not stitch across pocket openings.

In-seam pockets: Pin pocket pieces right sides together with seam allowances of pocket opening edges. Stitch pocket pieces in place – along seam line at pocket opening edge and close to side seam below opening. Press pocket pieces toward front and stitch together.

Stitch side seams of hem band. Stitch hem band to lower edge of dress. Press seam allowances onto band. Fold band in half to inside and press. Turn in inside edge of band and baste over joining seam. Work from right side of garment to stitch along line of seam.

Standing collar: Lay collar pieces right sides together. Stitch along front and upper edges, beginning and ending stitching in front exactly on seam line of joining edge. Trim seam allowances. Turn collar right side out and press. Stitch outer collar piece to neck edge of blouse. Turn in edge of inside collar piece and baste to joining seam. Sew inside edge of collar in place by hand.



Slash sleeve vents as marked. Spread slash edges apart to a straight line and stitch as narrowly as possible to one long edge of binding strip. Press binding strip over joining seam into vent, turn in to 7 mm (1/4 in) wide, turn edge under, and sew to joining seam on inside. Mitre binding on inside, at top of vent. Lay binding on front edges of vents to inside and baste to lower edge. Stitch sleeve seams. Fold pleat in lower edges of sleeves and baste.

Stitch cuffs to lower edges of sleeves, leaving underlap extending at back edges of vent. Press seam allowances of joining seams and of other long edges of cuffs onto cuffs. Fold cuffs lengthwise, right side facing in, and stitch across ends. Turn right side out. Baste inside edges in place. Baste upper underlap edges together. Sew inside edges in place by hand. Work a buttonhole in front end of each cuff.

Set in sleeves, easing sleeve caps.