

102 Blouse

Burda sizes 36, 38, 40, 42, 44

Back length about 70 cm (28 ins)

Materials

Waffle piquee,
width: 140 cm (55 in)
length: 2.30 – 2.30 – 2.30 – 2.35 – 2.35 m
(2 5/8 yds).

Interfacing.

10 sew-on snap fasteners.

Recommended fabrics: Blouse fabrics with some body. Use only blouse fabrics with two “good” sides.

Preparations

Print the pattern out on letter or A4 sized paper. It is very important to not scale or fit any of the pages, you must print the document in actual size. Your pattern will print on multiple pages, which you will then tile together. Arrange the sheets on a large, hard and flat surface matching up the numbers and letters (i.e. 6A to 6A). Cut or fold one of the sides and match the edge to it's corresponding side. Then, tape down in place so paper is secure.

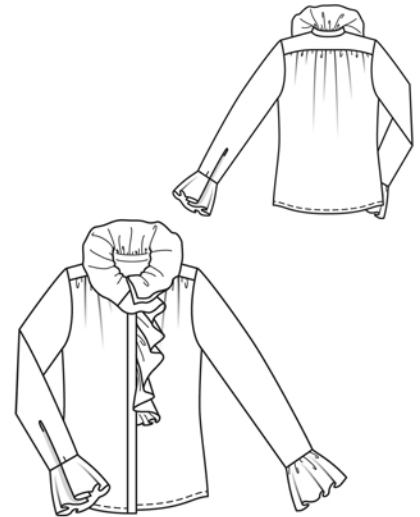
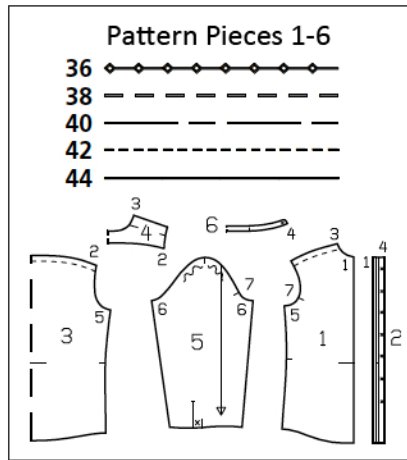
Trace the pattern pieces from the pattern sheet following the lines and markings for the correct size and the correct style (102). This pattern also includes pattern pieces, lines and markings for other styles that should be ignored.

Trace piece 2 twice from the pattern sheet. Cut one of these pieces apart on the marked seam line, for the right band. The snaps fasteners marked on piece 2 are for size 36. For the other sizes, mark the top fastener the same distance from upper edge as for size 36. The bottom fastener is the same for all sizes. Space the other snaps evenly in between.

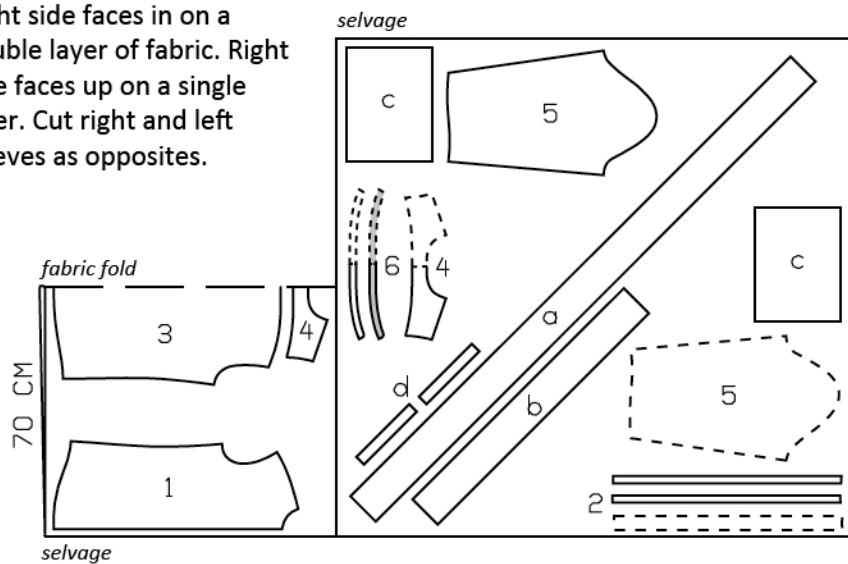
burda style magazine patterns do not have seam allowance included.

Seam and hem allowance to be added:

Seams and edges 1.5 cm (5/8 in), front edges and front neck edge 1 cm (3/8 in), bands 1 cm (3/8 in), collar 1 cm (3/8 in), hem 2 cm (3/4 in).



Right side faces in on a double layer of fabric. Right side faces up on a single layer. Cut right and left sleeves as opposites.



Cutting Out

- 1 front 2x
- 2 right front band, cut apart each 1x
- 2 left front band 1x
- 3 back, on a fold 1x
- 4 yoke, on a fold 2x
- 5 sleeve 2x
- 6 standing collar, on a fold 2x

Draft the following pieces NOT included:
a) flounce for right front edge and collar, 170 – 172 – 174 – 176 – 178 cm (67 – 67 3/4 – 68 1/2 – 69 1/4 – 70 ins) long, 13 cm (5 1/4 ins) wide (incl. allowance),

b) collar flounce, 86 – 87 – 88 – 89 – 90 cm (34 – 34 1/4 – 34 3/4 – 35 – 35 1/2 ins) long, 13 cm (5 1/4 ins) wide (incl. allowance),

c) 2 sleeve flounces, 60 – 60 – 61 – 61 – 62 cm (23 3/4 – 23 3/4 – 24 – 24 – 24 1/2 ins) long, 15 cm (6 ins) wide (incl. allowance),

d) 2 bias binding strips for sleeve vents, 21 cm (8 3/8 ins) long, 3 cm (1 1/4 ins) wide (incl. allowance).

Interfacing: Iron onto outer collar piece.

Sewing

Gather upper front and back edges to match edge of yoke. Pin one yoke to upper edge of back from outside and pin the other yoke to the inside. Stitch yokes in place and press up. Stitch outer yoke to upper edges of fronts. Turn in edge of inside yoke and baste along joining seams. Topstitch yoke close to joining seams.

Stitch side seams. Turn hem allowance to inside, turn edge under to 1 cm (3/8 in) wide, and stitch in place.

Stitch right front band to right front. Press allowances of joining seam onto band.

Stitch left front band to left front. Press seam allowances onto band. Fold band lengthwise, right side facing in. Stitch across bottom end. Turn band right side out. Turn in inside edge and baste in place. Topstitch band close to joining seam and close to front edge.

Stitch outer collar piece to neck edge. Press seam allowances onto collar.

Round off bottom end of flounce for right front edge and collar by trimming in a shallow curve, toward joining edge. Use closely spaced zigzag stitching to finish curved long edge and straight narrow end of this flounce and also to finish one long edge and both ends of remaining flounce pieces. To do this, press the edge to wrong side, 1 cm (3/8 in) wide. Work from right side to stitch along fold edge with short, closely spaced zigzag stitching. Trim allowance carefully on inside, close to stitching.

Baste collar flounce (b) to flounce for right front edge and collar (a), from left end, with wrong side facing right side. Stitch right end of collar flounce close to zigzag stitching. Gather flounce. Baste flounce to front edge of right band, above marking, and collar, then baste to upper edge of collar, matching stitched end of collar flounce to centre front on right end of collar and matching overlapped left ends of flounce to centre front on left end of collar.

Press seam allowance of joining edge of inside collar piece to inside. Lay inside collar piece



to inside. Lay inside collar piece right sides together with attached outer collar piece and pin, catching flounce in between. Press under allowance on inside edge of inside part of right band. Pin inside part of band right sides together with stitched outer part – seam allowance at top end of band lies on inside collar piece. At bottom end of band, stitch front edge of band and continue along edges of collar. Trim seam allowances. Turn band right side out. Baste inside edge in place. Topstitch bands along joining seam and front edge. Turn collar right side out and press. Turn in inside collar piece and baste to joining seam. Topstitch collar close to all edges.

Slash sleeve vents as marked. Spread slash edges apart to a straight line and stitch as narrowly as possible to one long edge of binding strip. Press binding strip over joining seam into vent, turn in to 7 mm (1/4 in) wide, turn edge under, and sew to joining seam on inside. Mitre binding on inside, at top of vent.

Stitch sleeve seams. Gather flounces and baste to lower edges of sleeves, leaving binding extending at edges of vent. Turn binding outward and pin to lower edge of sleeve, over flounce. Stitch along lower edges of sleeves. Turn binding to inside and lay flounces down. Press seam allowances onto sleeves. Topstitch sleeves close to flounce joining seams. Fold front edge of sleeve vent to inside, on fold line, and stitch about 1.5 cm (5/8 in) long, about 1.5 cm (5/8 in) behind fold edge. Sew one top half of a snap to inside of each sleeve, between line of stitching and fold edge. Sew bottom half of snap to other side of vent.

Set in sleeves, easing sleeve caps.

Sew top halves of snaps to wrong side of right front band and right end of collar. Do not exit needle on right side of fabric when sewing top halves of snaps in place. Sew bottom halves of snaps to left band and left end of collar, to match.