

### 103 Blouse

Burda sizes 36, 38, 40, 42, 44

Back length about 70 cm (28 ins)

### Materials

Crêpe satin

width: 135 cm (53 in)

length: white, 2.10 – 2.10 – 2.15 – 2.20 – 2.20 m  
(2 3/8 – 2 3/8 – 2 1/2 – 2 1/2 – 2 1/2 yds)  
black, 0.35 m (1/2 yd).

Interfacing.

7 small light-coloured buttons (concealed fastening) and 8 black buttons (cuffs).

Recommended fabrics: Softly draping blouse fabrics. Use only blouse fabrics with two “good” sides.

### Preparations

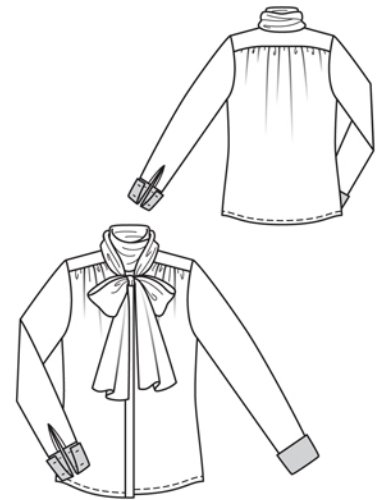
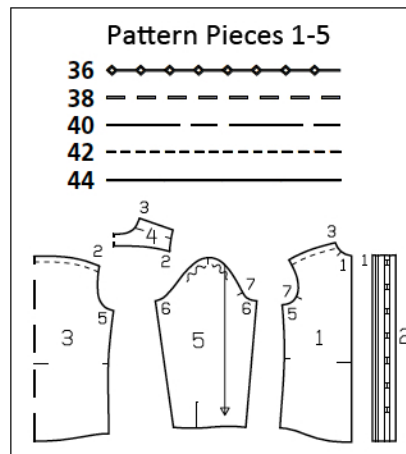
Print the pattern out on letter or A4 sized paper. It is **very important** to not scale or fit any of the pages, you must print the document in **actual size**. Your pattern will print on multiple pages, which you will then tile together. Arrange the sheets on a large, hard and flat surface matching up the numbers and letters (i.e. 6A to 6A). Cut or fold one of the sides and match the edge to it's corresponding side. Then, tape down in place so paper is secure.

Trace the pattern pieces from the pattern sheet following the lines and markings for the correct size and the correct style (103). This pattern also includes pattern pieces, lines and markings for other styles that should be ignored.

Note different lines on front band for right and left sides of fastening. The buttonholes on piece 2 are marked for size 36. For sizes 38 – 44, mark the top buttonhole the same distance from upper edge as for size 36. The bottom buttonhole is the same for all sizes. Space the other buttonholes evenly in between.

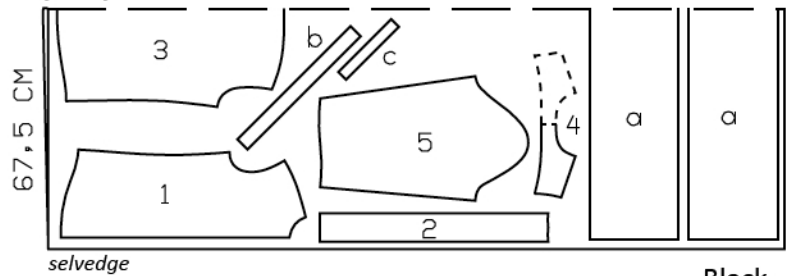
**burda style magazine patterns do not have seam allowance included. To be added:**

Seams and edges 1.5 cm (5/8 in), vertical edge of front (band joining) 2 cm (3/4 in), vertical edges of front band 2 cm (3/4 in), hem 2 cm (3/4 in).



White

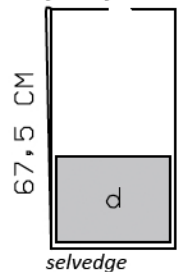
*fabric fold*



Cut from a double layer of fabric, right side facing in.

Black

*fabric fold*



### Cutting Out

White fabric

- 1 front 2x
- 2 front band 2x
- 3 back, on a fold 1x
- 4 yoke, on a fold 2x
- 5 sleeve 2x

Draft the following pieces NOT included:

a) tie collar, 2 pieces each 130 cm (51 1/4 ins) long, 25 cm (10 ins) wide,

b) bias strip for neck edge, 41 – 42 – 43 – 44 – 45 cm (16 1/4 – 16 1/2 – 17 – 17 1/4 – 17 3/4 ins) long, 4 cm (1 5/8 ins) wide (incl. allowance),

c) 2 bias binding strips for sleeve vents, 21 cm (8 3/8 ins) long, 3 cm (1 1/4 ins) wide (incl. allowance).

Black fabric:

d) 2 cuffs, 23.5 – 24 – 24.5 – 25 – 25.5 cm (9 1/4 – 9 1/2 – 9 3/4 – 9 7/8 – 10 1/8 ins) long, 32 cm (13 ins) wide, finished width 16 cm (6 1/2 ins), turned up, 8 cm (3 1/4 ins) wide.

Interfacing: See pattern layout.

## Sewing

Gather upper front and back edges to match edge of yoke. Pin one yoke to upper edge of back from outside and pin other yoke to inside. Stitch yokes in place. Press yokes up. Stitch outer yoke to upper edges of fronts. Turn in edges of inside yoke and baste to joining seams. Topstitch yoke close to seams.

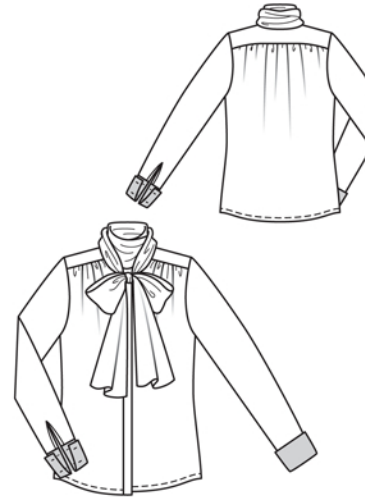
Stitch side seams. Turn hem allowance to inside, turn edge under to 1 cm (3/8 in) wide, and stitch in place.

Stitch collar pieces together as follows: First lay fabric pieces wrong sides facing and stitch seam allowances together, 7 mm (1/4 in) from edge. Press seam allowances open. Then lay pieces right sides facing with the seam lying exactly along the fold. Now stitch 8 mm (slightly more than 1/4 in) from fold edge, along marked seam line. Press seam allowances to one side.

On joining edge of collar, measure and mark 14.5 – 15 – 15.5 – 16 – 16.5 cm (5 3/4 – 6 – 6 1/4 – 6 3/8 – 6 1/2 ins) to each side of centre back. Hem outer edges of tie collar narrowly, from markings, at markings having hem taper toward edge of seam allowances, in a shallow curve, to prevent having to clip the collar when stitching. Baste collar to neck edge, between markings.

Fold bias strip for neck edge lengthwise and press, right side facing out. Pin folded bias strip to neck edge so that fold edge of strip lies on garment piece, 1 cm (3/8 in) past seam line. Stitch along neck edge. Trim seam allowances. Turn strip to inside and press edge. Topstitch 7 mm (1/4 in) from neck edge.

Stitch right front band to right front. Press seam allowances onto band. To face buttonhole band, fold band on fold line, with right side facing in, and stitch across narrow ends for 2 cm (3/4 in), from fold edge. Clip seam allowances at ends of seams. Turn buttonhole band right side out. Work buttonholes in band. Fold band on facing fold line, right side facing in, and stitch open ends closed. Turn band right side out – buttonhole band lies on wrong side of front. Topstitch



band close to joining seam. Press buttonhole band forward and sew top and bottom ends in place by hand.

Stitch left front band to left front. Press seam allowances onto band. Press allowance on inside edge of band to inside. Fold band on fold line, with right side facing in, and stitch across ends. Turn band right side out. Baste inside edge in place. Topstitch band.

Slash sleeve vents as marked. Spread slash edges apart to a straight line and stitch as narrowly as possible to one long edge of binding strip. Press binding strip over joining seam into vent, turn in to 7 mm (1/4 in) wide, turn edge under, and sew to joining seam on inside. Mitre binding on inside, at top of vent. Lay binding on front edges of sleeve vents to inside and baste to lower edge. Stitch sleeve seams.

Stitch cuffs to lower edges of sleeves. Press seam allowances of joining seam and of other long edge of cuff onto cuffs. Fold cuffs lengthwise, right side facing in. Stitch across ends. Turn right side out. Baste inside edges in place. Topstitch cuffs close to joining seams. Work 4 buttonholes in each end of each cuff, working top buttonhole 2 cm (3/4 in) below joining seam then working 3 more buttonholes, spaced 4 cm (1 5/8 ins) apart. Turn bottom edges of cuffs up 8 cm (3 1/4 ins) wide and press. Join pairs of buttons each with a thread bar. Button button pairs into cuffs.

Set in sleeves, easing sleeve caps.