

112A Skirt

Burda sizes 34, 36, 38, 40, 42

Skirt length 50 cm (19 3/4 ins)

Materials

Note: This is a double skirt – the pleated overskirt is worn over a plain, short underskirt made of the same fabric.

Jacquard,
width: 145 cm (57 in)
length: 1.45 – 1.45 – 1.45 – 1.60 – 1.70 m
(1 3/4 – 1 3/4 – 1 3/4 – 1 3/4 – 1 7/8 yds).

Petersham ribbon, 4 cm (1 5/8 ins) wide and
1.40 – 1.50 – 1.60 – 1.70 – 1.75 m (1 5/8 – 1 3/4
– 1 3/4 – 1 7/8 – 2 yds).

1 invisible zip, 22 cm (9 ins) long.

Recommended fabrics: Skirt fabrics.

Preparations

Print the pattern out on letter or A4 sized paper. It is **very important** to not scale or fit any of the pages, you must print the document in **actual size**. Your pattern will print on multiple pages, which you will then tile together. Arrange the sheets on a large, hard and flat surface matching up the numbers and letters (i.e. 6A to 6A). Cut or fold one of the sides and match the edge to it's corresponding side. Then, tape down in place so paper is secure.

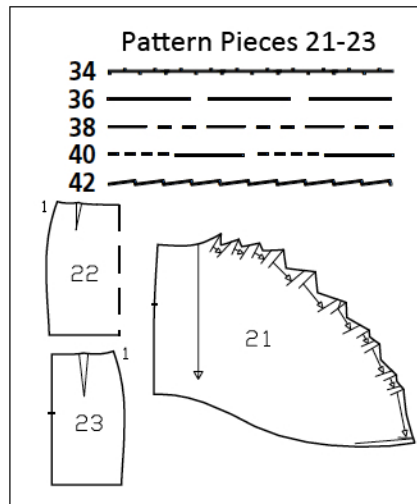
Trace the pattern pieces from the pattern sheet following the lines and markings for your size.

burda style magazine patterns do not have seam allowance included.

Seam and hem allowance to be added:
Seams, edges and hem 1.5 cm (5/8 in), hem (pieces 22 and 23) 4 cm (1 5/8 ins).

Cutting Out

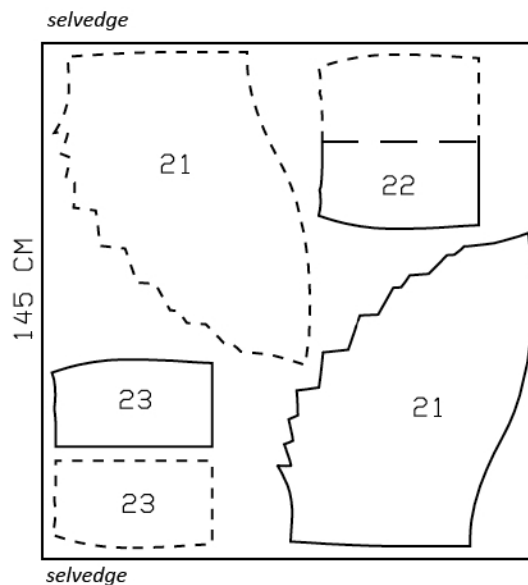
21 overskirt panel 2x
22 front skirt panel, on a fold 1x
23 back skirt panel 2x



Cut from a single layer of fabric, right side facing up. Pieces shown with a dashed outline should be placed on the fabric with their printed side facing down.

Sewing

Stitch darts in front skirt panel and back skirt panels. Press darts toward centre. Stitch centre back seam below slit mark. Stitch side seams. Press seam allowances open and press allowances to inside at opening. Press hem allowance to inside and sew in place by hand.



Sew invisible zip to edges of overskirt panels, see the "Helpful Hint" on next page. Stitch centre back seam from lower edge to zip. Trim allowance on lower edge to 7 mm (1/4 in), neaten, press to inside, and edgestitch in place. Fold pleats in upper edge in arrow direction and baste. Fold edge of skirt to inside on fold line next to each first pleat and baste.

Place overskirt over skirt, with wrong side facing right side. First baste left half of overskirt to upper edge of skirt panels, from centre back (teeth of zip extend at back opening edge). Then baste right half of overskirt in place. Sew opening edges of skirt to zip tapes.

Waistband: Turn one end of petersham ribbon under, about 1 cm (3/8 in) wide, and press. Measure and mark 68 – 72 – 76 – 80 – 84 cm (26 3/4 – 28 1/2 – 30 – 31 1/2 – 33 ins) from this end. Work from inside to lay petersham ribbon on seam allowances at upper edge of skirt so that pressed-under end extends at left back opening edge by 2.5 cm (1 in) and marking meets right edge of opening. Edgestitch lower edge of ribbon in place. Lay ribbon out over right edge of opening. Pin edges of ribbon together, catching seam allowance of skirt in between and turning end of ribbon under. Edgestitch ribbon edges together. Work buttonhole in left back end of waistband.