

140 Jacket

Burda sizes 36, 38, 40, 42, 44

Back length approx. 75 cm (30 ins)

Materials

Fulled loden fabric,
width: 140 cm (55 ins)
length: 1.90 – 2.10 – 2.10 – 2.10 – 2.10 m
(2 1/8 – 2 3/8 – 2 3/8 – 2 3/8 – 2 3/8 yds).

Cotton tape, 1.2 cm (1/2 in) wide and 3.30 – 3.35 – 3.40 – 3.45 – 3.50 m (3 5/8 – 3 3/4 – 3 3/4 – 3 7/8 – 3 7/8 yds) long.

1 separating two-way metal zip, 80 cm (32 ins) long.

Recommended fabrics: Non-fraying loden fabrics, preferably fulled loden.

Preparations

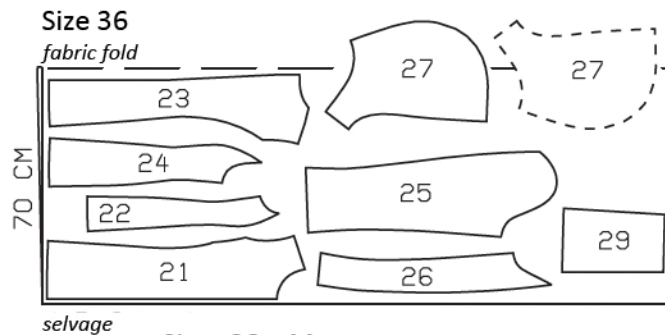
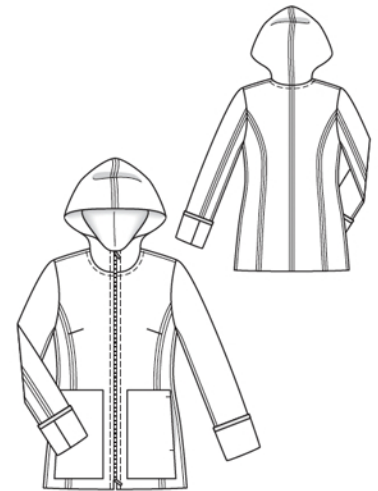
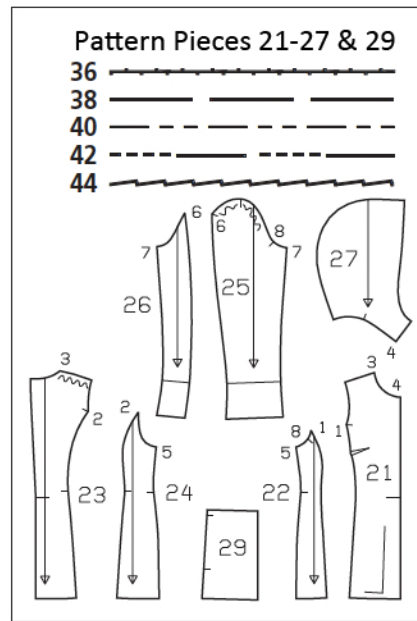
Print the pattern out on letter or A4 sized paper. It is very important to not scale or fit any of the pages, you must print the document in actual size. Your pattern will print on multiple pages, which you will then tile together. Arrange the sheets on a large, hard and flat surface matching up the numbers and letters (i.e. 6A to 6A). Cut or fold one of the sides and match the edge to it's corresponding side. Then, tape down in place so paper is secure.

Trace the pattern pieces from the pattern sheet following the lines and markings for the correct size and the correct style (140). This pattern also includes pattern pieces, lines and markings for other styles that should be ignored.

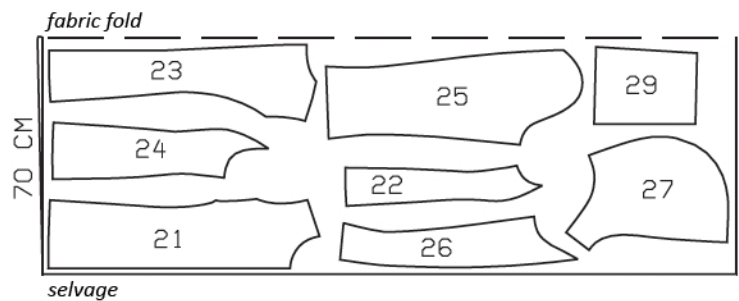
burda style magazine patterns do not have seam allowance included.

To be added:

Section seams, side seams, shoulder seams, and sleeve seams 5 mm (3/16 in); centre hood seam 5



Sizes 38 - 44



Cut from a double layer of fabric, right side facing in. The pieces shown extending over the fabric fold should be cut last from a single layer of fabric. Cut right and left pieces as opposites.

Cutting Out

- 21 centre front 2x
- 22 side front 2x
- 23 centre back 2x
- 24 side back 2x
- 25 front sleeve 2x
- 26 back sleeve 2x
- 27 hood 2x
- 29 pocket 2x

Sewing

Stitch bust darts. Cut dart allowances along centres, to 3 cm (1 1/4 ins) before points. Press darts open, pressing points flat.

Lay back pieces together, wrong sides facing, and stitch centre back seam (stitch 5 mm / 3/16 in from fabric edges). Stitch front and back section seams, side seams, and shoulder seams, all with wrong sides facing.

Cut 2 pieces of cotton tape to match pocket opening edges plus 2 cm (3/4 in). Pin tapes under pocket opening edges, leaving approx. 1 cm (3/8 in) extending at each end. Zigzag stitch close to pocket opening edges. Pin pockets to fronts at placement lines. Stitch pocket edges in place with zigzag stitching, leaving pocket openings open.

Lay hood pieces together, right sides facing. Stitch centre seam from lower edge to slit mark. Open the 50 cm (20 in) long zip. Turn top ends of zip tapes under. Cut 4 cm (1 5/8 ins) of cotton tape. Turn one end under and baste to bottom end of zip. Baste zip tapes face down to opening edges of hood pieces – teeth of zip lie on hood piece and zip tape lies on seam allowance. Pin cotton tape to seam allowances of hood, over zip tape, next to teeth of zip, then continue and pin cotton tape to center seam allowances, down to lower hood edge, not catching hood pieces. Turn in ends of tapes at front edge of hood. Use zipper foot to stitch edge of cotton tape to seam allowance, close to teeth of zip and close to centre seam. Press centre seam allowances with tapes open, then press slit allowances with tape to inside. Edgestitch loose edges of tape in place, catching hood pieces.

Attach hood: Stitch hood to neck edge of jacket, right sides facing. Work from hood side to lay tape on seam allowance and edgestitch tape in place. Turn hood up and turn seam allowance with tape down. Edgestitch loose edge of tape to jacket.

For sizes 36 – 42, shorten zip to match front edges.



Sleeves: Stitch sleeve seams with wrong sides facing and press seams open. For lower edges of sleeves, cut pieces of cotton tape. Stitch ends of each piece together to match lower sleeve edges. Pin pieces of tape to inside of lower sleeve edges and edgestitch in place.

Set in sleeves, easing sleeve caps (right sides facing). Fold lower sleeve edges up at marked fold lines.