

### 138 Coat

Burda sizes 34, 36, 38, 40, 42

Back length approx. 93 cm (37 ins)

### Materials

Fulled loden fabric,

width: 140 cm (55 ins)

length: white, 1.10 m (1 1/4 yds) for all sizes;

yellow, 0.80 – 0.80 – 1.20 – 1.20 – 1.20 m

(7/8 – 7/8 – 1 3/8 – 1 3/8 – 1 3/8 yds)

pink, 0.70 m (7/8 yd) for all sizes.

A piece of jersey, approx. 35 x 25 cm (14 x 10 ins), for the pocket pieces.

Vilene Bias Tape/ stay tape.

3 hooks and eyes.

Recommended fabrics: Fulled loden fabric.

### Preparations

Print the pattern out on letter or A4 sized paper. It is very important to not scale or fit any of the pages, you must print the document in actual size. Your pattern will print on multiple pages, which you will then tile together. Arrange the sheets on a large, hard and flat surface matching up the numbers and letters (i.e. 6A to 6A). Cut or fold one of the sides and match the edge to it's corresponding side. Then, tape down in place so paper is secure.

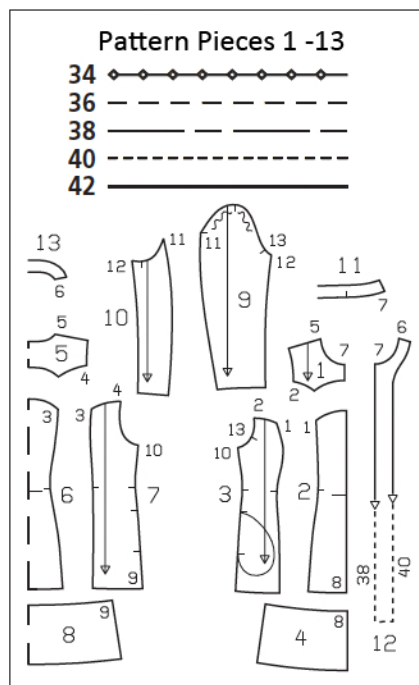
Trace the pattern pieces from the pattern sheet following the lines and markings for your size.

Trace the pocket piece from piece 3 as a separate pattern piece – it is the same for all sizes.

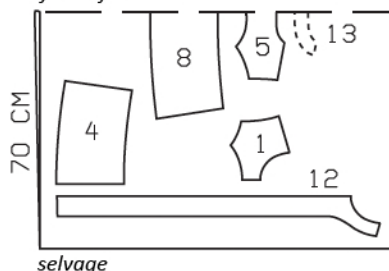
**burda style magazine patterns do not have seam allowance included.**

To be added:

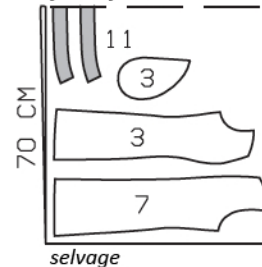
Seams and edges 1.5 cm (5/8 in), hem and sleeve hems 4 cm (1 5/8 ins).



White,  
Sizes 34-42  
fabric fold

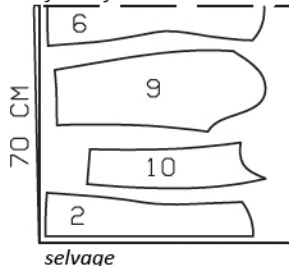


Pink,  
Sizes 34-42  
fabric fold

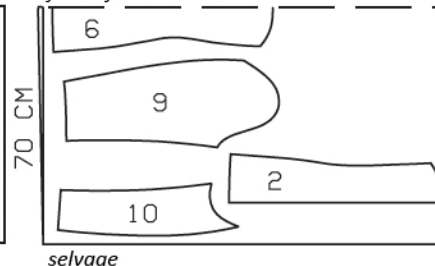


Cut from a double layer of fabric, right side facing in.

Yellow,  
Sizes 34, 36  
fabric fold



Sizes 38-42  
fabric fold



### Cutting Out

White fabric:

1 front yoke 2x

4 lower front 2x

5 back yoke, on a fold 1x

8 lower back, on a fold 1x

12 front facing 2x

13 back facing, on a fold 1x

Yellow fabric:

2 centre front 2x

6 centre back, on a fold 1x

9 upper sleeve 2x

Pink fabric:

3 side front 2x

pocket piece 2x

7 side back 2x

11 standing collar, on a fold 2x

Jersey: pocket piece (piece 3).

## Sewing

Vilene Bias Tape/ stay tape: Iron to wrong side of armhole edges, front shoulder seam edges, and front facing edges.

Stitch front and back vertical section seams (seam numbers 1 and 3). Begin stitching at upper edge, exactly at marked seam line of yoke attachment seam. Press seams open.

Stitch front yokes to fronts and stitch back yoke to back. Press seams open. If your fabric is especially thick and does not fray, you can cut a small wedge from the overlapped seam allowances at the yoke corners.

Stitch lower fronts to fronts and stitch lower back to back. Press seams open.

Stitch side seams, shoulder seams, and facings seams. At side seams, do not stitch across pocket openings.

Inseam pockets: Pin pocket pieces to seam allowances of pocket opening edges, right sides together – pocket pieces of jersey in front and pocket pieces of loden fabric in back. Stitch back pocket pieces in place along seam lines and stitch front pocket pieces in place, 7 mm (1/4 in) from seam lines. Press pocket pieces of jersey forward and stitch to seam allowances, close to seams. Trim pocket pieces even and stitch together.

On front edges, mark 3 openings, each approx. 7 mm (1/4 in) long, for the hooks and eyes. Mark one opening 1 cm (3/8 in) below neck edge, one opening at waist level, and one opening centred in between.

Stitch outer collar piece to neck edge of coat and stitch inside collar piece to facing. Press seams open.

Pin facing to coat, right sides together, pinning collar pieces together. Stitch along front edges and outer collar edges. Leave openings in seams, as marked, for hooks and eyes. Trim seam allowances, trimming corners diagonally. Turn collar right side out and turn facing to inside. Press edges.



Slide hooks through openings in right front edge, from inside to outside, and slide eyes through openings in left front edge. Sew ends of hooks and eyes to facings, on inside.

Pin collar attachment seams together exactly. Lay facing at neck edge up again and stitch seam allowances together close to collar attachment seam, stitching in front as far as possible.

Stitch sleeve seams. Press sleeve hem allowances to inside and sew in place by hand.

Set in sleeves, easing sleeve caps.

Unfold facings at hem. Press hem allowance to inside and sew in place by hand. Turn facings to inside again and sew to hem allowance. Sew inside facing edges to seams.