

114 Jacket

Burda sizes 36, 38, 40, 42, 44

Back length approx. 53 cm (21 ins)

Materials

Fulled loden fabric,
width: 145 cm (57 ins)
length: 1.35 – 1.35 – 1.40 – 1.40 – 1.40 m (1 5/8 yds).

Lining,
width: 140 cm (55 ins)
length: 1.20 – 1.20 – 1.25 – 1.25 – 1.25 m
(1 3/8 – 1 3/8 – 1 1/2 – 1 1/2 – 1 1/2 yds).

Interfacing.

1 separating two-way zip, 40 – 45 – 45 – 45 – 45 cm
(16 – 18 – 18 – 18 – 18 ins) long.

Shoulder pads.

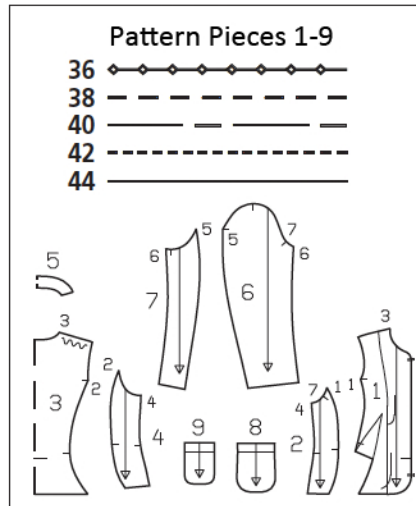
Recommended fabrics: Jacket fabrics of wool or blends.

Preparations

Print the pattern out on letter or A4 sized paper. It is **very important** to not scale or fit any of the pages, you must print the document in **actual size**. Your pattern will print on multiple pages, which you will then tile together. Arrange the sheets on a large, hard and flat surface matching up the numbers and letters (i.e. 6A to 6A). Cut or fold one of the sides and match the edge to it's corresponding side. Then, tape down in place so paper is secure.

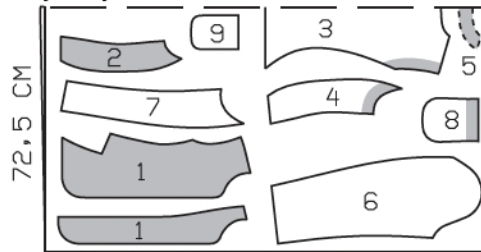
Trace the pattern pieces from the pattern sheet following the lines and markings for the correct size and the correct style (114). This pattern also includes pattern pieces, lines and markings for other styles that should be ignored.

Trace the facing from piece 1 as a separate pattern piece. Centre front lining piece: Mark a horizontal line from the section seam to point of dart and cut open. Lay vertical dart closed, thereby opening a bust dart for the lining piece (see pattern layout).



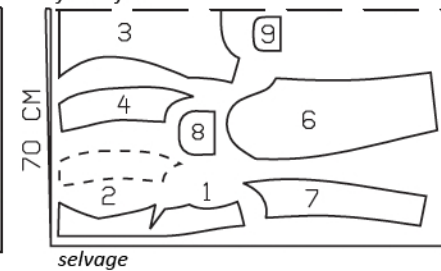
Loden, 145cm wide

fabric fold



Lining, 140cm wide

fabric fold



Cut from a double layer of fabric, right side facing in.

Cutting Out

Fulled loden:

- 1 centre front 2x
- front facing 2x
- 2 side front 2x
- 3 centre back, on a fold 1x
- 4 side back 2x
- 5 back facing, on a fold 1x
- 6 upper sleeve 2x
- 7 under sleeve 2x
- 8 lower pocket 2x
- 9 upper pocket 2x

Lining: pieces 1, 8 and 9 minus width of facing; piece 3 minus neck facing and with an ease pleat of approx. 2 cm (3/4 in) at centre back;; and also pieces 2, 4, 6, and 7.

Interfacing: See shaded area on pattern layout. Also interface hem allowances.

burda style magazine patterns do not have seam allowance included.

To be added:

Seams and edges 1.5 cm (5/8 in), hem and sleeve hems 4 cm (1 5/8 ins), lining 1.5 cm (5/8 in).

Sewing

Stitch darts in fronts. Trim dart allowances to 1 cm (3/8 in) wide and press open, pressing points of darts flat.

Stitch front and back section seams. Clip seam allowances along curves several times and press seams open. Stitch side seams and shoulder seams. Stitch shoulder seams of facing.

Patch pockets: Stitch pocket lining pieces to self-facings of pockets, leaving approx. 5 cm (2 ins) open in centre of seam, for turning. Turn facings and lining to outside and stitch to pocket edges. Trim seam allowances. Turn pockets right side out and press. Sew seam openings closed. Pin pockets to fronts at placement lines. Sew side and lower pocket edges in place, with invisible stitches, by hand.

Shorten upper end of zip: Measure and mark required length on zip. Use pliers to remove top stopper pieces and surplus teeth. Reattach stoppers and press firmly to secure. Trim zip tapes, 2 cm (3/4 in) above zip teeth.

Separate zip. Turn in top ends of zip tapes. Pin halves of zip face down on right side of front edges, between seam marks, so that teeth of zip lie on garment piece, 7 mm (1/4 in) past seam line. Stitch zip tapes in place along seam lines on front edges. Pin facing to jacket, right sides together. Stitch along hem edge, front edges, and neck edge, at hem edge leaving the last 3 cm (1 1/4 ins) before facing open. Trim seam allowances. Turn facing to inside and press edges.

Press hem allowance to inside and sew in place by hand.

Stitch sleeve seams. Press sleeve hem allowances to inside and sew in place by hand.

Set in sleeves. Sew shoulder pads in place.

Sew lining: On back lining piece, stitch ease pleat at top and bottom, each approx. 5 cm (2 ins) long, and baste in between. Press pleat to one side. Stitch darts and seams of lining. Set in sleeve linings.



Sew lining to jacket: Stitch lining to inside facing edge, first turning lower facing edges down. Lay lining inside jacket, with wrong sides facing, pulling linings into sleeves. Turn lining under along hem edge and press fold lightly. Slide upward in a shallow curve and pin to hem allowance. Sew facings and lining in place. Lay extra length of lining down and press lightly. Above each sleeve hem, pin a fold, approx. 1 cm (3/8 in) deep, in lining. Turn edge of sleeve lining under and sew to hem allowance. Lay extra length down and press.