

### 139 Jacket

Burda sizes 36, 38, 40, 42, 44

Back length approx. 58 cm (23 ins)

### Materials

Fulled loden fabric,  
width: 130 cm (51 ins)  
length: 1.70 – 1.90 – 1.90 – 1.90 – 1.90 m  
(1 7/8 – 2 1/8 – 2 1/8 – 2 1/8 – 2 1/8 yds).

Cotton tape, 1.2 cm (1/2 in) wide and 4.20 – 4.20 – 4.40 – 4.40 – 4.50 m (4 5/8 – 4 5/8 – 4 7/8 – 4 7/8 – 5 yds) long.

1 metal zip, 50 cm (20 ins) long.

1 separating two-way metal zip, 60 – 60 – 60 – 65 – 65 cm (24 – 24 – 24 – 26 – 26 ins) long.

Recommended fabrics: Non-fraying loden fabrics, preferably fulled loden.

### Preparations

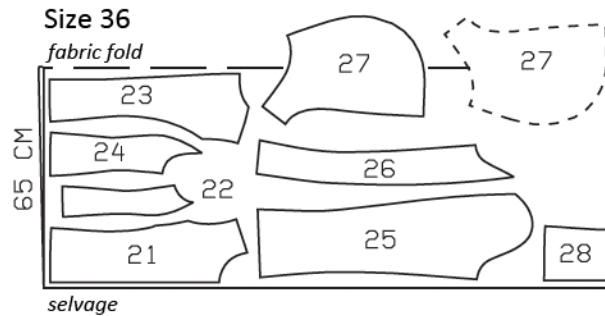
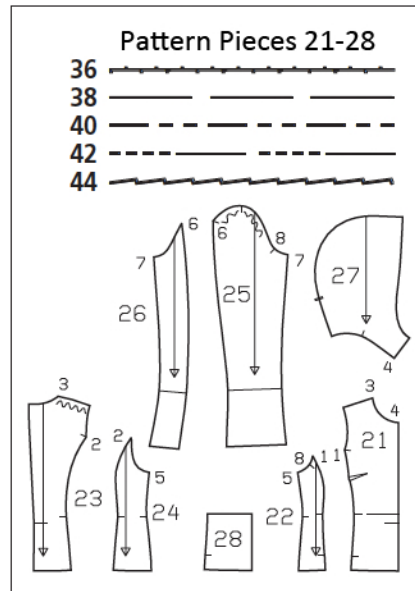
Print the pattern out on letter or A4 sized paper. It is very important to not scale or fit any of the pages, you must print the document in actual size. Your pattern will print on multiple pages, which you will then tile together. Arrange the sheets on a large, hard and flat surface matching up the numbers and letters (i.e. 6A to 6A). Cut or fold one of the sides and match the edge to it's corresponding side. Then, tape down in place so paper is secure.

Trace the pattern pieces from the pattern sheet following the lines and markings for the correct size and the correct style (139). This pattern also includes pattern pieces, lines and markings for other styles that should be ignored.

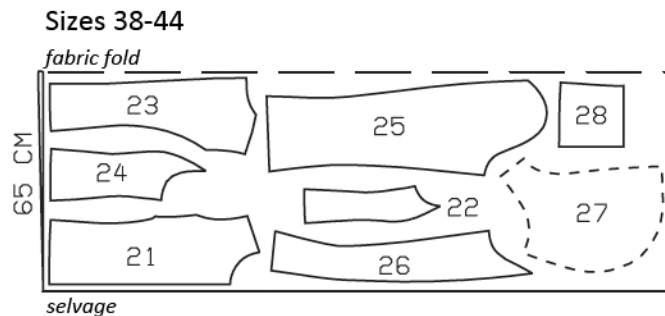
**burda style magazine patterns do not have seam allowance included.**

To be added:

Section seams, side seams, shoulder seams and sleeve seams 5 mm (3/16 in), remaining seams and edges 1 cm (3/8 in), no allowance on front edge of hood or on hem edges.



Cut from a double layer of fabric, right side facing in. The pieces shown extending over the fabric fold should be cut last from a single layer of fabric. Cut right and left pieces as opposites.



### Cutting Out

- 21 centre front 2x
- 22 side front 2x
- 23 centre back 2x
- 24 side back 2x
- 25 front sleeve 2x
- 26 back sleeve 2x
- 27 hood 2x
- 28 pocket piece 2x

## Sewing

Stitch bust darts. Cut dart allowances along centres, to 3 cm (1 1/4 ins) before points. Press darts open, pressing points flat.

Lay back pieces together, wrong sides facing, and stitch centre back seam (stitch 5 mm / 3/16 in from fabric edges). Press seam allowances open. Seam allowances are on outer side of jacket. Stitch side back pieces to centre back, wrong sides facing. Press seam allowances open.

Front section seams and inseam pockets: Cut two pieces of cotton tape, each 16 cm (6 3/8 ins) long. Pin pieces of cotton tape to inside of centre fronts, next to seam allowances of pocket openings. Edgestitch outer edge of each tape in place and sew inside edge in place by hand. Lay pocket pieces on side fronts, wrong sides facing, and stitch to pocket opening edges. Pin pocket pieces above and below pocket openings – they will be caught in the seams. Stitch side fronts to centre fronts, wrong sides facing, not stitching across pocket openings. Press seam allowances open. Turn pocket pieces forward, under centre front pieces. Trim away seam allowances on front and lower edge of pocket pieces. Baste pocket pieces in place. Stitch upper edges of pocket pieces in place as marked. Stitch lower edges in place, 5 mm (3/16 in) above hem edge.

Stitch side seams and shoulder seams, with wrong sides facing. Press seams open.

Lay hood pieces together, right sides facing. Stitch centre seam from lower edge to slit mark. Open the 50 cm (20 in) long zip. Turn top ends of zip tapes under. Cut 4 cm (1 5/8 ins) of cotton tape. Turn one end under and baste to bottom end of zip. Baste zip tapes face down to opening edges of hood pieces – teeth of zip lie on hood piece and zip tape lies on seam allowance. Pin cotton tape to seam allowances of hood, over zip tape, next to teeth of zip, then continue and pin cotton tape to center seam allowances, down to lower hood edge, not catching hood pieces. Turn in ends of tapes at front edge of hood. Use zipper foot to stitch edge of cotton



tape to seam allowance, close to teeth of zip and close to centre seam. Press centre seam allowances with tapes open, then press slit allowances with tape to inside. Edgestitch loose edges of tape in place, catching hood pieces.

Attach hood: Stitch hood to neck edge of jacket, right sides facing. Work from hood side to lay tape on seam allowance and edgestitch tape in place. Turn hood up and turn seam allowance with tape down. Edgestitch loose edge of tape to jacket.

For sizes 36, 38, 42 and 44, the zip must be shortened to match front edge.

Front edges with zip: Turn top ends of zip tapes under. Separate zip halves. Lay halves of zip face down on front edges of jacket and hood (right fabric side) so that teeth of zip lie on garment piece, next to seam line, and zip tapes lie on seam allowances. Stitch zip tapes in place along marked front edges. Pin cotton tape to seam allowances, over zip tapes, and turn ends of cotton tape under. Stitch cotton tape to seam allowances, close to teeth of zip. Turn seam allowances with tape to inside and stitch remaining edges of cotton tapes in place.

Sleeves: Stitch sleeve seams with wrong sides facing and press seams open. For lower edges of sleeves, cut pieces of cotton tape. Stitch ends of each piece together to match lower sleeve edges. Pin pieces of tape to inside of lower sleeve edges and edgestitch in place.

Set in sleeves, easing sleeve caps (right sides facing). Fold lower sleeve edges up at marked fold lines.