

### 109 Skirt

Burda sizes 34, 36, 38, 40, 42, 44

Skirt length 52 cm (20 1/2 ins)

### Materials

Fulled loden fabric,  
width: 140 cm (55 ins)  
length: light green, 0.45 m (5/8 yd)  
red 0.25 m (3/8 yd) for all sizes.

Petersham ribbon, 2 cm (3/4 in) wide (for waistband) and 1.40 – 1.50 – 1.60 – 1.70 – 1.80 – 1.80 m (1 5/8 – 1 3/4 – 1 3/4 – 1 7/8 – 2 – 2 yds) long.

1 invisible zip, 22 cm (9 ins) long.

1 sew-on snap fastener.

Recommended fabrics: Fulled loden fabric. Use only fabrics which do not fray.

### Preparations

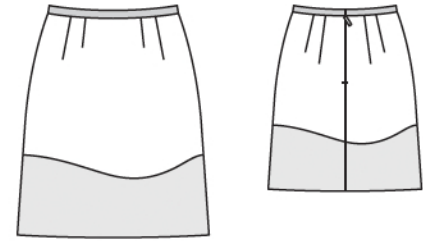
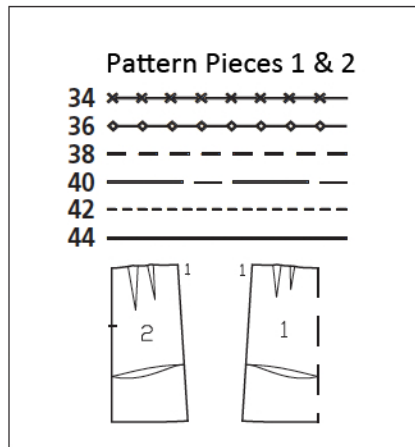
Print the pattern out on letter or A4 sized paper. It is **very** important to not scale or fit any of the pages, you must print the document in **actual size**. Your pattern will print on multiple pages, which you will then tile together. Arrange the sheets on a large, hard and flat surface matching up the numbers and letters (i.e. 6A to 6A). Cut or fold one of the sides and match the edge to it's corresponding side. Then, tape down in place so paper is secure.

Trace the pattern pieces from the pattern sheet following the lines and markings for the correct size and the correct style (109). This pattern also includes pattern pieces, lines and markings for other styles that should be ignored.

Trace pieces 1 and 2 twice from the pattern sheet, noting different seam lines for the right and left pieces. Turn the left pieces over, face down. For the front skirt panel, glue the pattern pieces together at the centre. Cut pieces 1 and 2 apart on the marked seam line = upper and lower skirt pieces.

**burda style magazine patterns do not have seam allowance included. To be added:**

Seams and edges 1.5 cm (5/8 in), no allowances on hem edges.



Cut the asymmetric skirt pieces from a single layer of fabric, right side facing up.

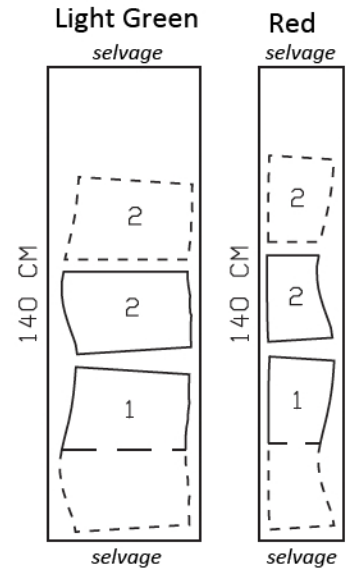
### Cutting Out

Light green fabric:

- 1 upper front skirt panel, on a fold 1x
- 2 upper back skirt panel 2x

Red fabric:

- 1 lower front skirt panel, on a fold 1x
- 2 lower back skirt panel 2x



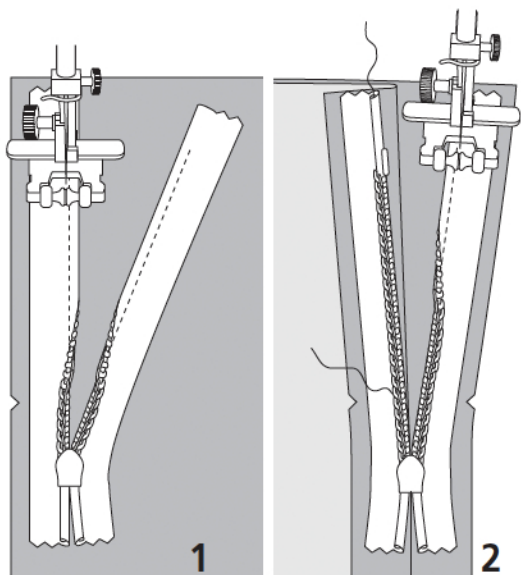
### Sewing

Stitch darts and press toward centre.

Stitch lower skirt pieces to upper skirt pieces. Press seam allowances open.

Sew invisible zip to back slit edges, see the "Helpful Hint" on next page. Stitch centre back seam from lower edge to zip. Stitch side seams. Press seam allowances open.

On petersham ribbon, turn one end under, approx. 1 cm (3/8 in) wide, and press. Measure and mark 67 – 71 – 75 – 79 – 83 – 87 cm (26 1/2 – 28 – 29 3/4 – 31 1/4 – 32 3/4 – 34 1/4 ins) from this end. Lay petersham ribbon on seam allowance on inside of upper skirt edge so that pressed-under end extends 2 cm (3/4 in) past right back slit edge and marking meets left slit edge. Edgestitch lower edge of ribbon in place. Fold ribbon over left slit edge to outside and pin ribbon edges together, catching seam allowance of skirt. Turn in end of ribbon. Edgestitch ribbon edges together. Fasten waistband with the snap.



These special zippers come in various lengths. The zipper should be at least 2 cm (3/4 in) longer than the slit. It is sewn in place before the seam below the slit is stitched. A special presser foot is required to sew the zipper in place.

### **Sewing the zipper in place:**

Open the zipper and push the coil back with your thumbnail to reveal the seam marking between the tape and the coil. Place the open zipper right side down on the right fabric side of one slit edge.

In order to stitch the zipper in place exactly along the marked seam line, you must first calculate the distance between the tape edge and the fabric edge as follows: width of seam allowance minus 1 cm (3/8 in) tape width = distance from edge of fabric. This will yield a value of 5 mm (3/16 in) if the width of the seam allowance is 1.5 cm (5/8 in).

Pin the top end of the zipper tape in place, the calculated distance from the edge of the fabric. The bottom end of the zipper will extend past the marked end of the slit. Place the presser foot on the zipper so that the coil is in the notch to the right of the needle (1). Stitch zipper in place, from the top to the marked end of the slit. Close zipper.

Place the other zipper tape face down on the opposite slit edge and pin in place at the top. Open zipper again. Place the presser foot on the top end of the zipper so that the coil is in the notch to the left of the needle (2). Sew the zipper in place, from the top to the end of the slit. Close zipper.

Now stitch the seam below the zipper, from bottom to top. Turn the loose lower end of the zipper out of the way, over the seam allowance. Stitch as close as possible to the last stitches of the zipper seams. Trim away excess zipper and bind the end with a scrap of fabric.