

139 Girl's Apron

Height 104, 110, 116, 122, 128 cm

Length of apron 33 – 35 – 37 – 39 – 42 cm
(13 – 13 3/4 – 14 1/2 – 15 1/2 – 16 1/2 ins)

Materials

Lightweight denim

width: 150 cm (59 in)

length: 0.70 – 0.70 – 0.75 – 0.75 – 0.80 m
(7/8 yd).

Cotton batiste for lining, about 20 x 45 cm (8 x 18 ins).

Rickrack, 1 cm (3/8 in) wide and 0.90 – 0.95 – 0.95 – 1.00 – 1.05 m (1 – 1 1/8 – 1 1/8 – 1 1/8 – 1 1/4 yds) long.

Cord for the piping, about 3 mm (1/8 in) thick:
0.70 – 0.70 – 0.75 – 0.75 – 0.80 m (7/8 yd).

Recommended fabrics: Cotton fabrics.

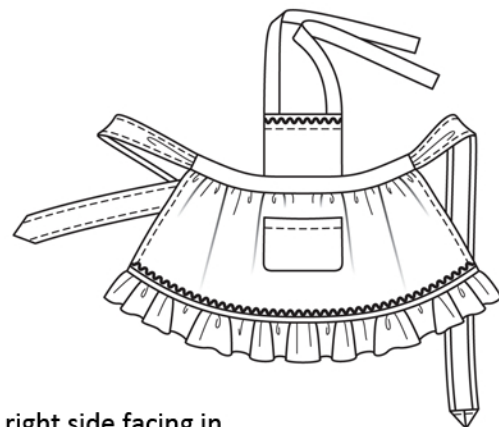
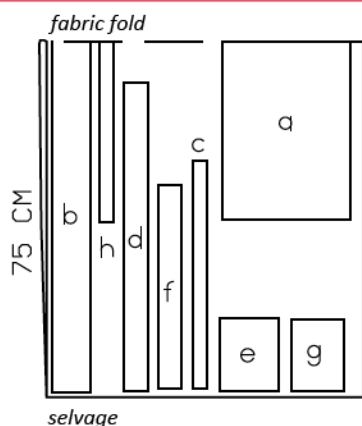
Preparations

Draft the following pieces:

- a) apron piece, 75 cm (30 ins) wide, 25 – 27 – 29 – 31 – 34 cm (10 – 10 3/4 – 11 1/2 – 12 1/4 – 13 1/2 ins) long,
- b) hem frill, 148 cm (58 ins) wide, 8 cm (3 1/4 ins) long,
- c) 2 waistband pieces, 47 – 48 – 49 – 51 – 53 cm (18 1/2 – 19 – 19 1/4 – 20 1/4 – 21 ins) long, 3 cm (1 1/4 ins) wide,
- d) 2 sashes, 65 cm (26 ins) long, 5 cm (2 ins) wide,
- e) bib, 12 – 12 – 13 – 14 – 15 cm (4 3/4 – 4 3/4 – 5 1/4 – 5 1/2 – 6 ins) long, 15 – 15 – 16 – 17 – 18 cm (6 – 6 – 6 3/8 – 6 3/4 – 7 ins) wide,
- f) 2 straps, 43 – 43 – 44 – 45 – 46 cm (17 – 17 – 17 1/4 – 17 3/4 – 18 1/8 ins) long, 5 cm (2 ins) wide, finished width 2.5 cm (1 in),
- g) pocket, 10 – 11 – 12 – 14 – 15 cm (4 – 4 3/8 – 4 3/4 – 5 1/2 – 6 ins) long, 15 – 15 – 16 – 16 – 17 cm (6 – 6 – 6 3/8 – 6 3/8 – 6 3/4 ins) wide,
- h) piping strip, 77 cm (30 1/2 ins) long, 3 cm (1 1/4 ins) wide (incl. allowance).

Add seam and hem allowances:

Seams and edges 1 cm (3/8 in), side apron edges 2 (3/4 in) cm, hem frill 1 cm (3/8 in).



Cut from a double layer of fabric, right side facing in.

Cutting Out

Denim:

- a) apron piece,
- c) 2 waistband pieces,
- d) 2 sashes,
- e) bib,
- f) 2 straps,
- g) pocket,
- h) piping strip,

Sewing

Press allowances on side edges of apron piece to wrong side, turn in to a width of 1 cm (3/8 in), and stitch. Fold apron piece in half and mark centre front.

Pocket: Lay pocket lining piece right sides together with pocket piece of outer fabric. Stitch pocket pieces together around all edges, slightly rounding off bottom corners and leaving a section of seam open on upper edge, for turning. Turn pocket right side out. Sew opening closed. Topstitch 1.5 cm (5/8 in) from upper edge of pocket. Pin pocket to centre front of apron piece, 5 cm (2 ins) from upper edge. Edgestitch side and lower pocket edges in place.

Piping: Fold piping strip in half lengthwise, right side facing in. Stitch ends closed, 1 cm (3/8 in) from ends. Turn piping strip right side out. Lay cord inside piping strip so that it lies along the fold. Stitch close to cord. Baste piping to lower edge of apron piece so that piping cord lies on garment piece, next to seam line.

Press allowances on side and lower edges of frill to wrong side, turn in, and stitch. Gather upper edge of frill. Stitch frill to lower edge of apron, catching piping tape. Lay frill and piping cord down and lay seam allowances up. Topstitch apron close to frill joining seam. Stitch rickrack to apron, along frill joining seam, turn ends of rickrack under.

Sewing Continued...

Gather upper edge of apron to match length of waistband. Stitch outer waistband to upper edge of apron. Press allowances of joining seam onto waistband. Mark centre front on attached outer waistband.

Fold each strap lengthwise, right side facing in. Stitch along long edges and across one end. Turn straps right side out and press. Topstitch close to edges.

Baste ends of straps to upper edge of bib. Lay lining piece right sides together with bib piece. Stitch along side and upper edges, catching straps. Trim seam allowances, trimming corners diagonally. Turn bib right side out. Press edges. Topstitch close to edges. Topstitch 3 cm (1 1/4 ins) from upper edge of bib. Stitch rickrack to upper edge of bib, turn ends of rickrack under. Mark centre on lower edge of bib. Baste bib to upper edge of outer waistband, matching centres.

Sashes: Press allowances on long edges to inside, turn in, and stitch. Fold one end of each sash in half lengthwise, right side facing in. Stitch across end. Trim allowances and neaten. Turn ends of sashes right side out and press to points. Lay straight ends of sashes in folds and baste to ends of attached waistband piece.

Press allowance on inside edge of inside waistband piece to wrong side. Lay inside waistband piece right sides together with attached waistband piece. Stitch across ends of waistband and along upper edge, catching sashes and bib. Turn waistband right side out. Baste inside edge in place. Topstitch waistband close to all edges.