

126 Top

Burda sizes 34, 36, 38, 40, 42

Back length approx. 62 cm (24 1/2 ins)

Materials

Fine knit fabric,
width: 150 cm (59 ins)
length: 0.90 – 0.90 – 0.90 – 0.95 – 0.95 m
(1 – 1 – 1 – 1 1/8 – 1 1/8 yds).

Vilene Bias Tape/ stay tape.

1 invisible zip, 22 cm (9 ins) long.

Recommended fabrics: Fine knit fabrics or jersey. Use stretch fabrics only.

Preparations

Print the pattern out on letter or A4 sized paper. It is **very important** to not scale or fit any of the pages, you must print the document in **actual size**. Your pattern will print on multiple pages, which you will then tile together. Arrange the sheets on a large, hard and flat surface matching up the numbers and letters (i.e. 6A to 6A). Cut or fold one of the sides and match the edge to it's corresponding side. Then, tape down in place so paper is secure.

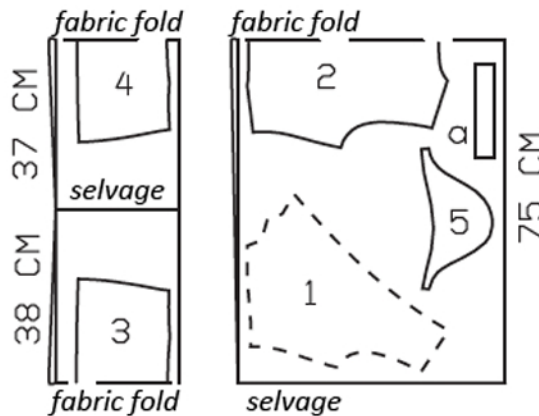
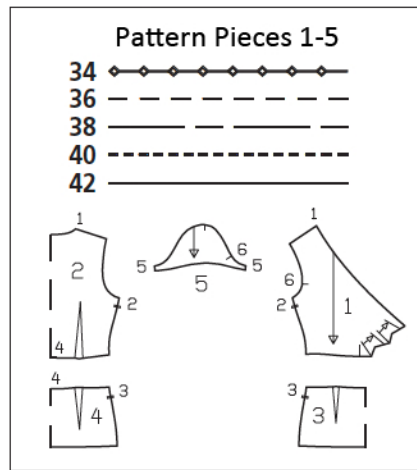
Trace the pattern pieces from the pattern sheet following the lines and markings for the correct size and the correct style (126). This pattern also includes pattern pieces, lines and markings for style 127 that should be ignored.

The pleat arrows on piece 1 are marked for size 34. For the other sizes, remark the pleat arrows according to the size lines.

burda style magazine patterns do not have seam allowance included.

Seam and hem allowance to be added:

Seams and edges 1.5 cm (5/8 in), front edges 2 cm (3/4 in), sleeve hems 2 cm (3/4 in), hem 4 cm (1 5/8 ins).



Fold the fabric as shown in the pattern layout, right side facing in.

Cutting Out

- 1 upper front 2x
- 2 upper back, on a fold 1x
- 3 lower front, on a fold 1x
- 4 lower back, on a fold 1x
- 5 sleeve 2x

Draft the following pieces NOT included in the pattern:

- a) facing strip for back neck edge, 20 – 21 – 21 – 22 – 22 cm (8 – 8 3/8 – 8 3/8 – 8 3/4 – 8 3/4 ins) long, 4 cm (1 5/8 ins) wide (incl. allowances).

Vilene Bias Tape/ stay tape: Iron to wrong side of neck and armhole edges and to wrong side of zip slit edges.

Sewing

Work from inside to stitch pleats in upper fronts, from lower edge to each arrow mark. Lay pleats in direction of arrows and press pleat seams. Baste pleats at lower edge. Stitch darts in upper back and press toward centre. Fold facing strip for back neck edge lengthwise, right side facing out, and press. Stitch back facing strip to back neck edge, right sides together. Trim seam allowances. Turn facing strip to inside and press edge. Topstitch 7 mm (1/4 in) from neck edge.

Stitch shoulder seams, leave allowance of front neck edges extending. Press seam allowances forward. Press allowances on front neck edge to inside and sew in place by hand. Lay right front on left front, with wrong side facing right side and matching centre fronts. Baste lower edges together. Stitch right side seam (seam number 2). Press seam allowances open.

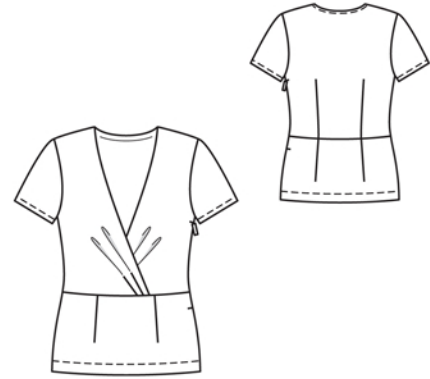
Stitch vertical darts in lower front and back pieces and press toward centre. Stitch right side seam (seam number 3). Stitch upper unit to lower unit. Press seam allowances down.

Sew invisible zip to left side edges, between slit marks, see the "Helpful Hint" on next page. Leave upper ends of zip tapes loose. Teeth of zip begin at slit mark. Stitch left side seam above and below zip.

Stitch sleeve seams. Turn sleeve hem allowances to inside, fold edge under by half width, and stitch in place.

Set in sleeves.

Press hem allowance to inside and stitch in place, 3 cm (1 1/4 ins) from lower edge.





These special zippers come in various lengths. The zipper should be at least 2 cm (3/4 in) longer than the slit. It is sewn in place before the seam below the slit is stitched. A special presser foot is required to sew the zipper in place.

Sewing the zipper in place:

Open the zipper and push the coil back with your thumbnail to reveal the seam marking between the tape and the coil. Place the open zipper right side down on the right fabric side of one slit edge.

In order to stitch the zipper in place exactly along the marked seam line, you must first calculate the distance between the tape edge and the fabric edge as follows: width of seam allowance minus 1 cm (3/8 in) tape width = distance from edge of fabric. This will yield a value of 5 mm (3/16 in) if the width of the seam allowance is 1.5 cm (5/8 in).

Pin the top end of the zipper tape in place, the calculated distance from the edge of the fabric. The bottom end of the zipper will extend past the marked end of the slit. Place the presser foot on the zipper so that the coil is in the notch to the right of the needle (1). Stitch zipper in place, from the top to the marked end of the slit. Close zipper.

Place the other zipper tape face down on the opposite slit edge and pin in place at the top. Open zipper again. Place the presser foot on the top end of the zipper so that the coil is in the notch to the left of the needle (2). Sew the zipper in place, from the top to the end of the slit. Close zipper.

Now stitch the seam below the zipper, from bottom to top. Turn the loose lower end of the zipper out of the way, over the seam allowance. Stitch as close as possible to the last stitches of the zipper seams. Trim away excess zipper and bind the end with a scrap of fabric.