

### 107 Skirt

Burda sizes 34, 36, 38, 40, 42, 44

Skirt length 40 cm (15 3/4 ins)

### Materials

Chiffon with imitation leather sequins, width: 105 cm (42 ins), embroidered with sequins over a width of 100 cm (approx. 40 ins) length: 1.00 m (1 1/8 yds) for all sizes.

Lining, width: 140 cm (55 ins) length: 0.45 m (5/8 yd).

Petersham ribbon, 1.5 cm (5/8 in) wide and 1.90 – 2.00 – 2.10 – 2.20 – 2.30 – 2.40 m (2 1/8 – 2 1/4 – 2 3/8 – 2 5/8 – 2 5/8 yds).

5 sew-on snap fasteners.

Recommended fabrics: Sequin fabric.

### Preparations

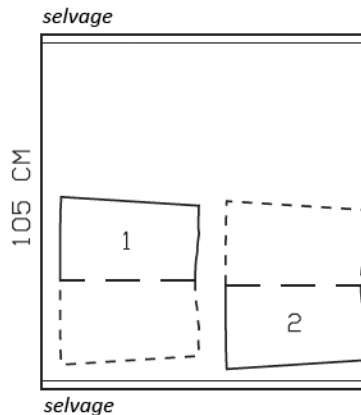
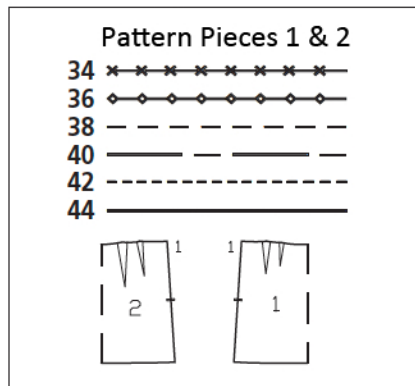
Print the pattern out on letter or A4 sized paper. It is **very important** to not scale or fit any of the pages, you must print the document in **actual size**. Your pattern will print on multiple pages, which you will then tile together. Arrange the sheets on a large, hard and flat surface matching up the numbers and letters (i.e. 6A to 6A). Cut or fold one of the sides and match the edge to it's corresponding side. Then, tape down in place so paper is secure.

Trace the pattern pieces from the pattern sheet following the lines and markings for the correct size and the correct style (107). This pattern also includes pattern pieces, lines and markings for style 105, 106, 108 & 109 that should be ignored.

Trace the pocket piece from piece 21 as a separate pattern piece.

**burda style magazine patterns do not have seam allowance included.**

Seam and hem allowance to be added:  
Seams and edges 1.5 cm (5/8 in), hem 4 cm (1 5/8 ins), lining 1.5 cm (5/8 in).



Cut from a single layer of fabric, wrong side facing up.

### Cutting Out

Sequin fabric:

- 1 front skirt panel, on a fold 1x
- 2 back skirt panel, on a fold 1x

Lining: pieces 1 and 2.

### Sewing

Baste darts closed, approx. 3 cm (3 1/4 ins) long, beginning at upper edge. Lay darts toward centre and baste to upper skirt edge. Stitch side seams, leaving slit open in left seam. Press seams open and press allowances to inside at slit.

For the slit underlap, cut a piece of petersham ribbon, 43 cm (17 in) long. Fold ribbon to half the length and edgestitch one long edge closed. Pin open edge narrowly under back slit edge and stitch slit edge to underlap.

Stitch darts of lining. Stitch side seams of lining, leaving slit open as mirror image of slit on skirt. Place lining inside skirt, with wrong sides facing, and baste to upper skirt edge. On lining, turn back slit edge under and sew to underlap attachment seam. On front, turn slit edges of main fabric and lining under and sew together.

On remaining petersham ribbon, turn one end under, approx. 1 cm (3/8 in) wide, and press. Measure and mark 66.5 – 70.5 – 74.5 – 78.5 – 82.5 – 86.5 cm (26 1/4 – 27 7/8 – 29 1/2 – 31 – 32 5/8 – 34 1/8 ins) from this end. Lay petersham ribbon on seam allowance on inside of upper skirt edge so that pressed-under end meets edge of slit underlap and marking meets front slit edge. Edgestitch lower edge of ribbon in place. Fold ribbon over front slit edge to outside and pin ribbon edges together, catching seam allowance of skirt. Turn in end of ribbon. Edgestitch ribbon edges together. Fasten waistband with a snap. Sew 4 top halves of snaps to inside of front slit edge and sew bottom halves of snaps to underlap, to match.

Turn hem allowance to inside and sew in place by hand. Hem lining so that it is approx. 1 cm (3/8 in) shorter than skirt.