

### 118B Top

Burda sizes 36, 38, 40, 42, 44

Back length approx. 57 cm (22 1/2 ins)

### Materials

Sequin chiffon,  
width: 120 cm (47 ins)  
length: 0.70 – 0.70 – 0.70 – 0.70 – 1.40 m  
(7/8 – 7/8 – 7/8 – 7/8 – 1 5/8 yds).

Interfacing.

Vilene Bias Tape/ stay tape.

Satin bias tape, pre-folded, 2 cm (3/4 in) wide  
and 2.70 – 2.80 – 2.90 – 3.00 – 3.10 m (3 – 3  
1/8 – 3 1/4 – 3 3/8 – 3 1/2 yds) long.

1 small button.

Recommended fabrics: Fine knit fabrics or softly  
draping sequin fabrics.

### Preparations

Print the pattern out on letter or A4 sized paper.  
It is **very important** to not scale or fit any of the  
pages, you must print the document in  
**actual size**. Your pattern will print on multiple  
pages, which you will then tile together. Arrange  
the sheets on a large, hard and flat surface  
matching up the numbers and letters (i.e. 6A to  
6A). Cut or fold one of the sides and match the  
edge to it's corresponding side. Then, tape down  
in place so paper is secure.

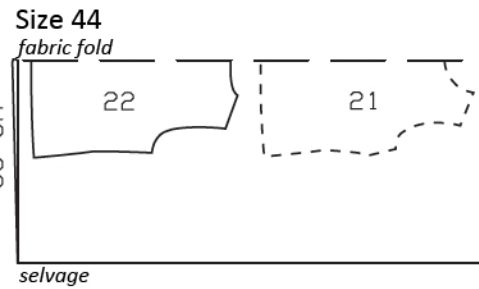
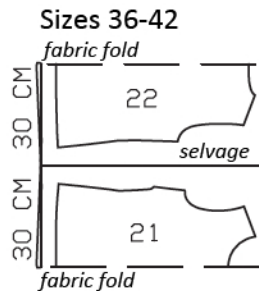
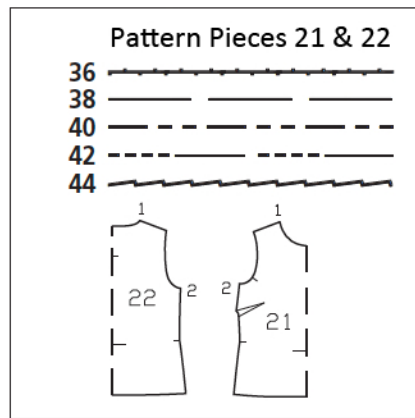
Trace the pattern pieces from the pattern sheet  
following the lines and markings for the correct  
size and the correct style (118). This pattern also  
includes pattern pieces, lines and markings for  
style 119, 120 & 121 that should be ignored.

**burda style magazine patterns do not have seam  
allowance included.**

Seam and hem allowance to be added:  
Seams and edges 1.5 cm (5/8 in)

### Cutting Out

21 front, on a fold 1x  
22 back, on a fold 1x



Fold the  
fabric as  
shown in the  
pattern  
layout, right  
side facing in.

### Sewing

Stitch bust darts. Press darts up.

For the back slit facing, cut a piece of satin bias tape, 15 cm (6 in) long,  
and press flat. Iron interfacing to wrong side of this facing piece.

**Back slit:** At centre back, mark slit with basting stitches. Pin back slit facing  
piece to back, over slit mark, right sides together. Work from wrong side  
to stitch closely around marked slit. Slash between lines of stitching. Turn  
facing to inside. Press slit edges. Sew inside facing edges in place by hand.

Stitch shoulder seams, beginning and ending exactly at marked neck edge.  
Neaten seam allowances together and press onto back.

**Bind neck edge:** Trim away seam allowance on neck edge. Unfold one  
long edge of pre-folded bias tape and stitch to neck edge, 1 cm (5/8 in)  
from edge (along pressed fold). Turn bias tape up and turn ends under.  
Turn bias tape over neck edge to inside and sew in place by hand.

Trim away seam allowances on armhole edges. Bind armholes as de-  
scribed for neck edge. Do not turn ends of bias tapes under. Stitch side  
seams. Sew upper ends of seam allowances in place.

To face hem edge, unfold one edge of pre-folded bias tape and stitch to  
lower edge of top. Turn tape to inside. Sew inside edge in place by hand.

Fasten back slit with a button and thread loop.