

127 Dress

Burda sizes 34, 36, 38, 40, 42

Length from waist 44 cm (17 1/4 ins)

3/4-sleeves, approx. 42 cm (16 1/2 ins) long

Materials

Tulle embroidered with small sequins (for dress bodice),
width: 140 cm (55 ins) wide, embroidered with sequins over a width of 120 cm (47 ins)
length: 1.20 m (1 3/8 yds) for all sizes.

Tulle embroidered with large imitation leather sequins (for the skirt),
width: 135 cm (53 ins)
length: 0.55 m (3/4 yd).

A piece of chiffon, 50 x 50 cm (20 x 20 ins).

Vilene Bias Tape/ stay tape.

1 invisible zip, 40 cm (16 ins) long.

Recommended fabrics: Stretch sequin fabrics.
Use stretch fabrics only.

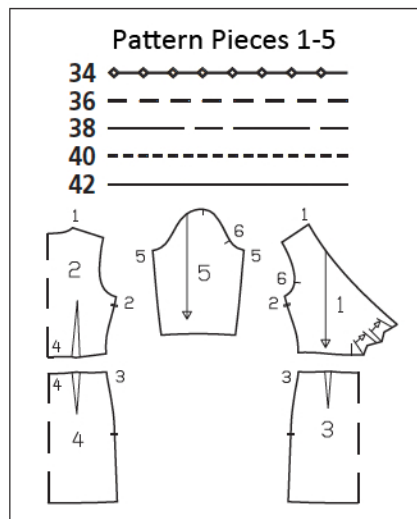
Preparations

Print the pattern out on letter or A4 sized paper. It is **very important** to not scale or fit any of the pages, you must print the document in **actual size**. Your pattern will print on multiple pages, which you will then tile together. Arrange the sheets on a large, hard and flat surface matching up the numbers and letters (i.e. 6A to 6A). Cut or fold one of the sides and match the edge to it's corresponding side. Then, tape down in place so paper is secure.

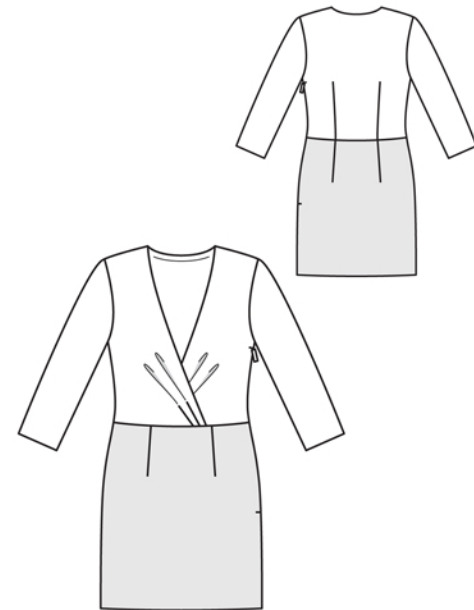
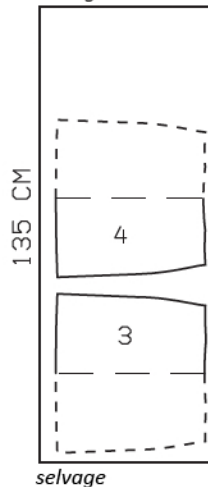
Trace the pattern pieces from the pattern sheet following the lines and markings for the correct size and the correct style (127). This pattern also includes pattern pieces, lines and markings for style 126 that should be ignored.

The pleat arrows on piece 1 are marked for size 34. For the other sizes, remark the pleat arrows according to the size lines.

burda style magazine patterns do not have seam allowance included. To be added:
Seams and edges 1.5 cm (5/8 in), hem 4 cm (1 5/8 ins).

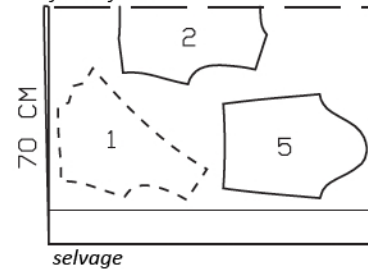


Tulle, 135cm wide
selvage



Fold the fabric as shown in the pattern layout. Right side faces in on a double layer of fabric; wrong side faces up on a single layer of fabric.

Tulle, 140cm wide
fabric fold



Cutting Out

Tulle with small sequins:

- 1 front 2x
- 2 back, on a fold 1x
- 5 sleeve 2x

Tulle with large sequins:

- 3 front skirt panel, on a fold 1x
- 4 back skirt panel, on a fold 1x

Chiffon:

Draft the following pieces NOT included in the pattern:

bias strip for neck edge, a total of 115 – 120 – 120 – 120 – 125 cm (45 1/4 – 47 1/4 – 47 1/4 – 49 1/4 ins) long, 6 cm (2 3/8 ins) wide (incl. allowances),

2 bias strips for sleeves, 30 cm (12 ins) long, 4 cm (1 5/8 ins) wide (incl. allowances).

Vilene Bias Tape/ stay tape: Iron to wrong side of neck and armhole edges and to wrong side of zip slit edges.

Sewing

Work from inside to stitch pleats in fronts, from lower edge to each arrow mark. Lay pleats in direction of arrows and baste to lower edge.

Stitch darts in back and press toward centre back.

Stitch shoulder seams. Press seam allowances onto back.

Fold bias strip for neck edge lengthwise, right side facing out, and press. Pin folded bias strip to neck edge so that fold edge of strip lies on garment piece, 2 cm (3/4 in) past seam line. Stitch along neck edge. Turn bias strip up and stitch to seam allowances, close to seam. Turn bias strip to inside and press edge. Sew inside edge of bias strip in place by hand.

Lay right front on left front, with wrong side facing right side and matching centre fronts. Baste lower edges together. Stitch right side seam of dress bodice. Press seam allowances to one side.

Stitch darts in skirt panels and press toward centre. Stitch right side seam. Stitch skirt to dress bodice. Press seam allowances up.

Sew invisible zip to left side edges, between slit marks, see the "Helpful Hint" on next page. Leave upper ends of zip tapes loose. Teeth of zip begin at slit mark. Stitch left side seam above and below zip.

Stitch sleeve seams. Fold bias strips for sleeve hems in half lengthwise and press. Turn in one end of each strip. Stitch each folded strip to lower sleeve edge, on right fabric side, so that fold edge of strip lies on garment piece, 1 cm (3/8 in) wide, and open end of strip overlaps turned-under end. Turn strip to inside and sew in place.

Set in sleeves.

Turn hem allowance to inside and sew in place by hand.

