

112 Dress

Burda sizes 72, 76, 80, 84, 88

Length from waist 67 cm (26 1/2 ins)

Materials

Lurex novelty fabric,
width: 150 cm (59 ins)

length: size 72: 2.00 m (2 1/4 yds),
sizes 76, 80: 2.05 m (2 1/4 yds),
sizes 84, 88: 2.10 m (2 3/8 yds).

0.15 m (1/4 yd) of Interfacing, 90 cm (36 ins) wide.

1 invisible zip, 60 cm (24 ins) long.

Recommended fabrics: Lightweight dress fabrics.

Preparations

Print the pattern out on letter or A4 sized paper. It is **very important** to not scale or fit any of the pages, you must print the document in **actual size**. Your pattern will print on multiple pages, which you will then tile together. Arrange the sheets on a large, hard and flat surface matching up the numbers and letters (i.e. 6A to 6A). Cut or fold one of the sides and match the edge to it's corresponding side. Then, tape down in place so paper is secure.

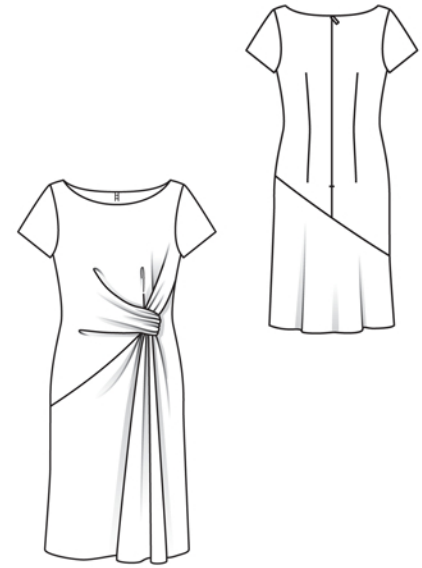
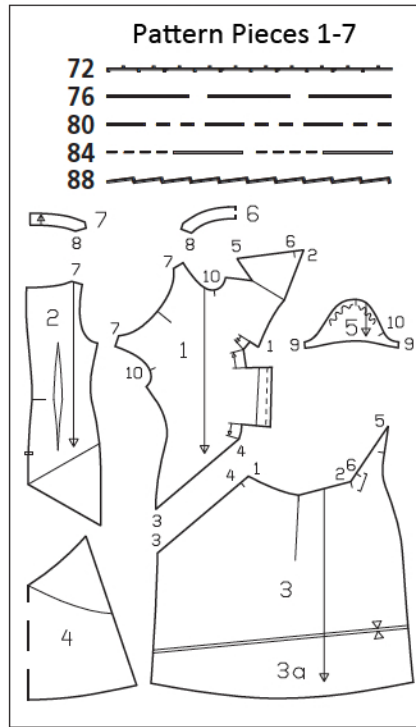
Trace the pattern pieces from the pattern sheet following the lines and markings for the correct size and the correct style (112). This pattern also includes pattern pieces, lines and markings for style 113 that should be ignored.

Note different lines for right and left pieces 2 and 4. Trace the shorter left piece 2 and the smaller right piece 4 each as a separate pattern piece. Glue the pattern pieces for the back skirt panel together at centre back. Glue pattern pieces 3 and 3a together on the marked lines. The pleat arrows on piece 1 are marked for size 72. For the other sizes, mark the pleat arrows accordingly.

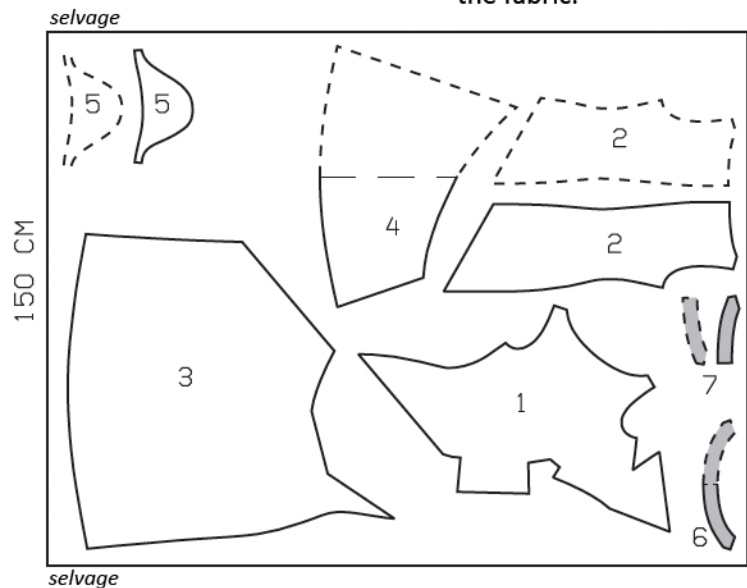
burda style magazine patterns do not have seam allowance included.

Seam and hem allowance to be added:

4 cm (1 5/8 ins) for hem, 2 cm (3/4 in) for sleeve hems, and 1.5 cm (5/8 in) at all other seams and edges.



Due to the asymmetric pieces, cut from a single fabric layer, right side facing up. Pieces shown with a broken outline should be placed face down on the fabric.



Cutting Out

Novelty fabric:	4 back skirt panel, whole piece (see "Preparation")1x
1 front 1x	5 sleeve2x
2 right back 1x	6 front facing, on a fold1x
2 left back1x	7 back facing2x
3 front skirt panel 1x	

Interfacing: See shaded area on pattern layout.

Sewing

Place right sides of fabric together to baste and stitch. Secure beginnings and ends of seams by backstitching.

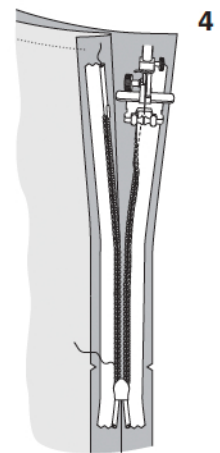
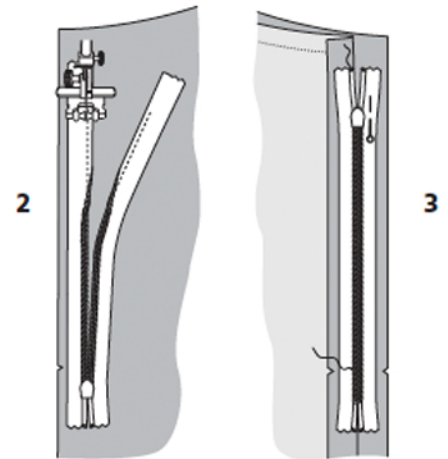
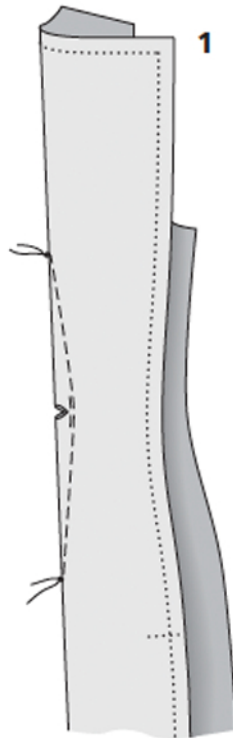
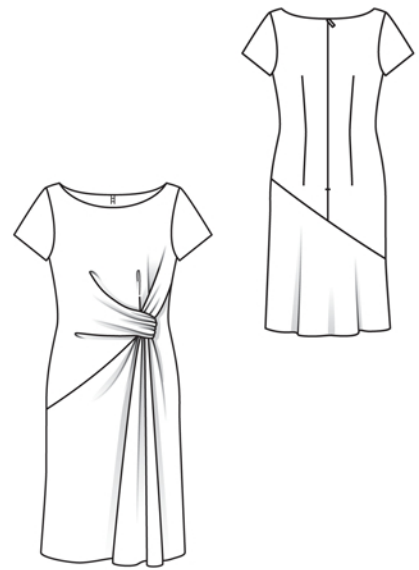
BACK

Back darts:

Fold each back piece along centre of dart, right side facing in. Pin dart lines together. Stitch, beginning at centre of each dart and stitching toward points. Do not backstitch at points of darts but knot ends of thread securely. Clip darts at waist level (image 1). Press darts toward centre back.

Invisible zip:

Open the zip and push the coil back with your thumbnail to reveal the seam marking between the tape and the coil. Place the open zip face down on the right fabric side of the right back opening edge. In order to stitch the zip in place exactly along the marked seam line, you must first calculate the distance between the tape edges and the fabric edge as follows: width of seam allowance minus 1 cm (3/8 in) tape width = distance from edge of fabric. This will result in 5 mm (3/16 in) if seam allowance is 1.5 cm (5/8 in) wide. Pin top end of zip tape in place the calculated distance from the edge of the fabric. The bottom end of the zip will extend past the marked end of the zip slit. Place the presser foot on the zip so that the coil is in the notch to the right of the needle (image 2). Stitch zip in place from the top to the marked end of the slit. Close zip. Place the other zip tape face down on the other slit edge and pin top in place with a single pin (image 3). Open zip again. Place the presser foot on the top end of the zip so that the coil is in the notch to the left of the needle. Sew the zip in place, from the top to slit mark (image 4), then close zip.



Sewing Continued...

Centre back seam:

Below zip, lay back pieces together, right sides facing. Pin centre back seam from lower edge to slit mark, laying loose end of zip out of the way, over seam allowance. Stitch seam with the zipper foot of your sewing machine and end stitching as close to last stitches of zip seams as possible (image 5). Press seam allowances open and neaten edges.

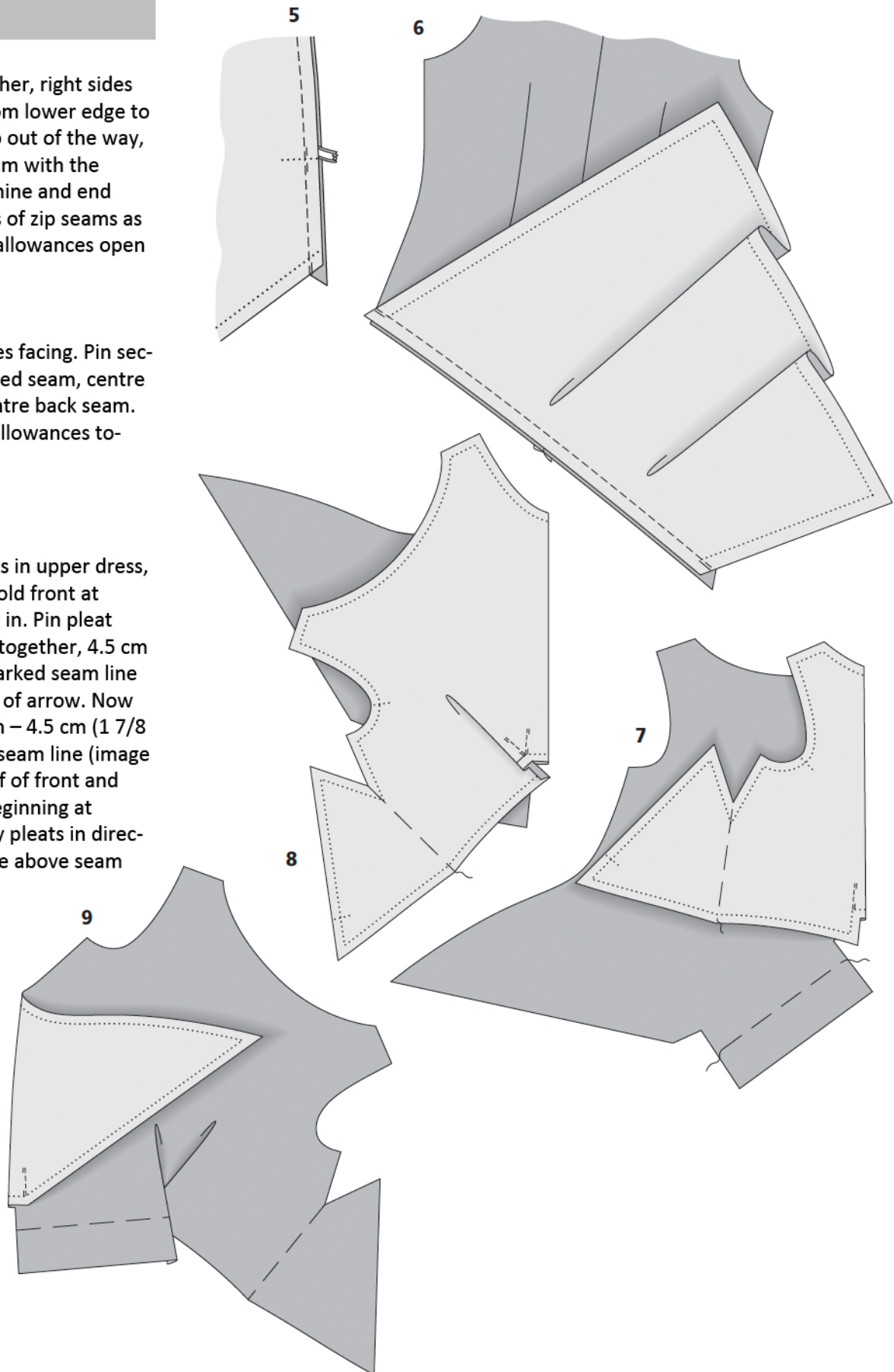
Attach skirt back:

Lay skirt back on back, right sides facing. Pin section seam – because of the angled seam, centre of skirt piece does not meet centre back seam. Stitch (image 6). Neaten seam allowances together and press up.

FRONT:

Pleats:

Work from inside to stitch pleats in upper dress, beginning with left side pleat: Fold front at centre of pleat, right side facing in. Pin pleat lines together, then stitch lines together, 4.5 cm (1 7/8 ins) long, beginning at marked seam line (image 7). Lay pleat in direction of arrow. Now pin the adjacent pleat and stitch – 4.5 cm (1 7/8 ins) long – beginning exactly at seam line (image 8). Finally, pin pleat on right half of front and stitch 4.5 cm (1 7/8 ins) long, beginning at marked seam line (image 9). Lay pleats in direction of arrows and baste in place above seam line.



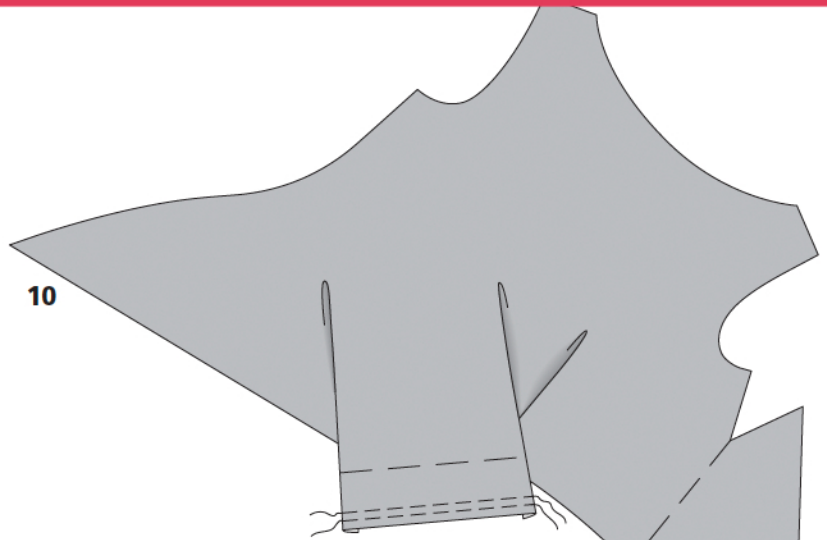
Sewing Continued...

Horizontal seam and twist:

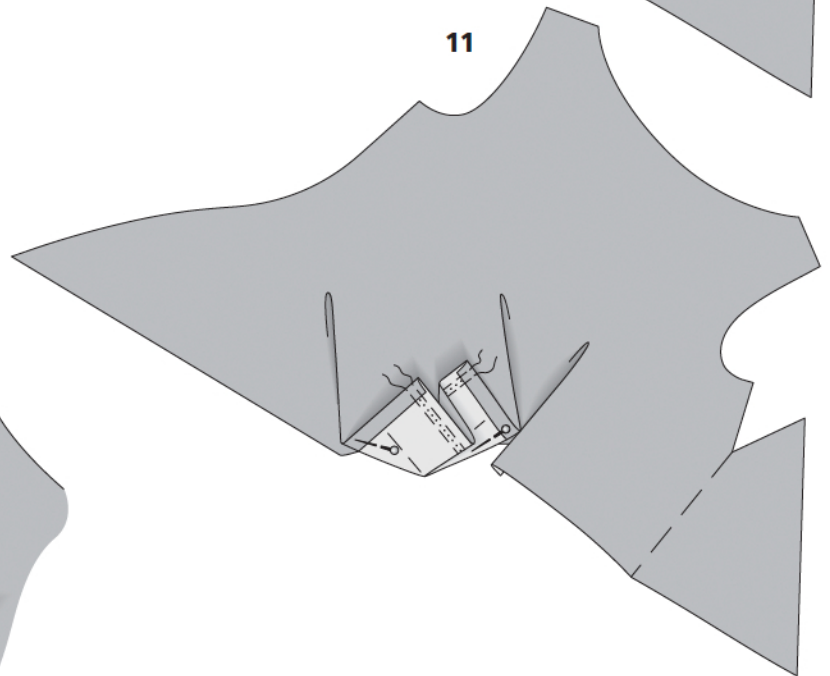
On front, gather piece which extends at bottom (= tab). To do this, stitch two lines of machine basting (longest stitch setting), 1 cm (3/8 in) from edge and 5 mm (3/16 in) from first line of stitching. Do not yet pull bobbin threads (image 10). Then turn "tab" up at each last stitch of pleat seams and pin (image 11).

Lay front on skirt front, right sides facing. Pin together from right side edge (seam number 3) to seam mark or pleat seam (at seam number 4) and stitch (image 12). Press seam allowances open and press allowance of skirt piece to inside, up to corner. Neaten edges of seam allowances.

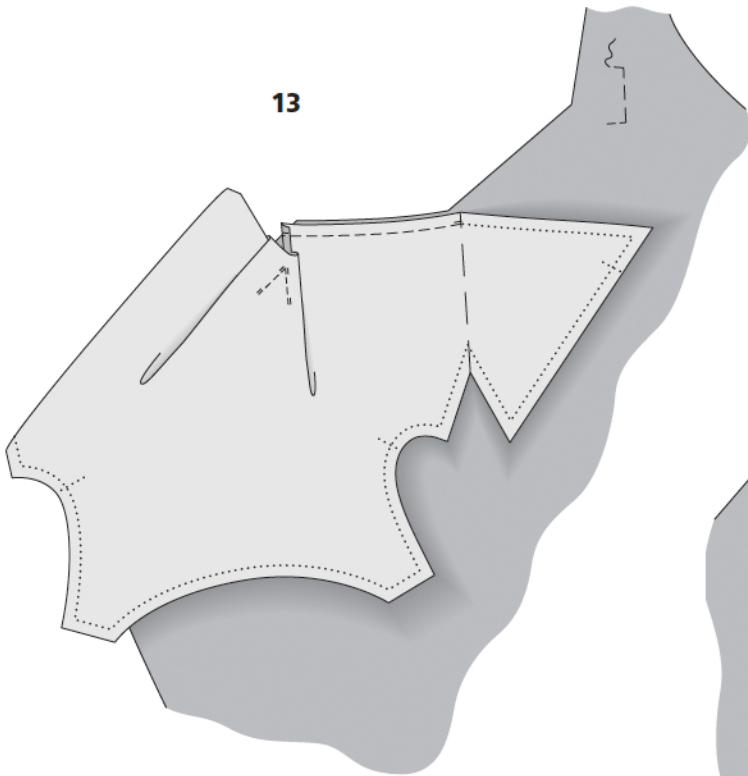
Pin front to upper skirt edge, from seam number 1 to fold line. Stitch (image 13). Clip seam allowance of skirt at fold line, close to last stitch. Pin front to upper skirt edge from fold line to corner (seam number 2).



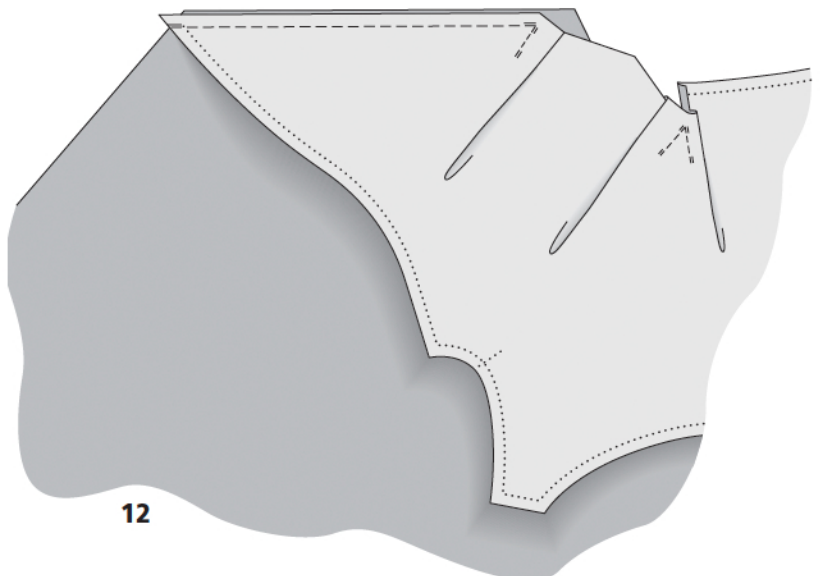
10



11



13

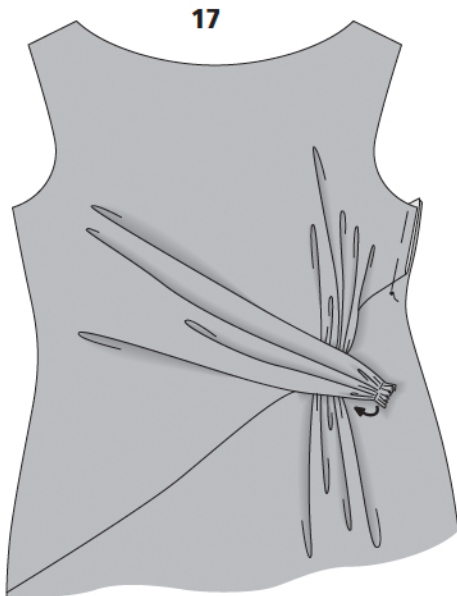
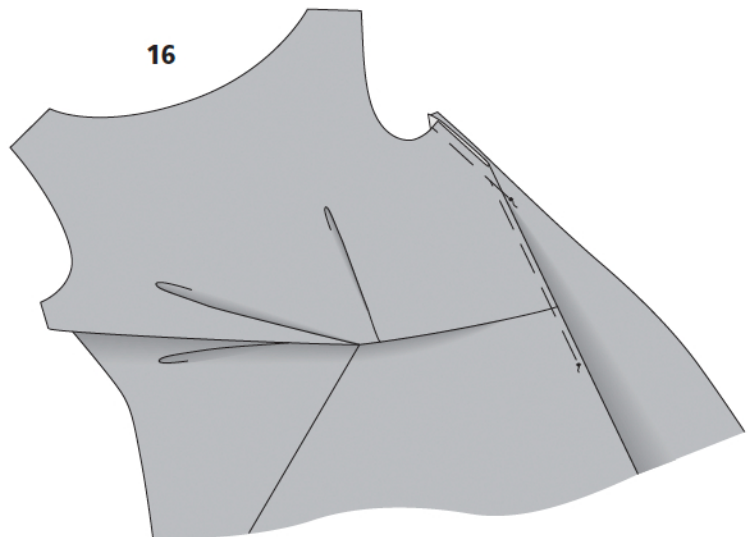
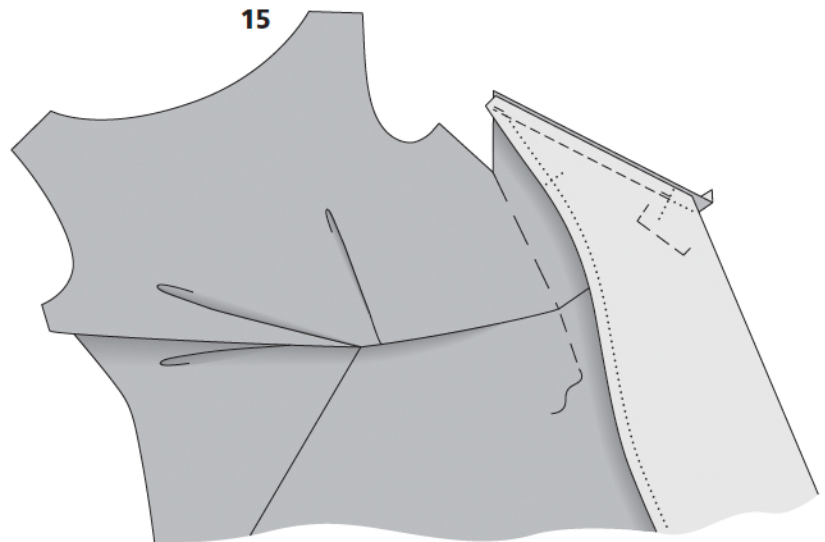
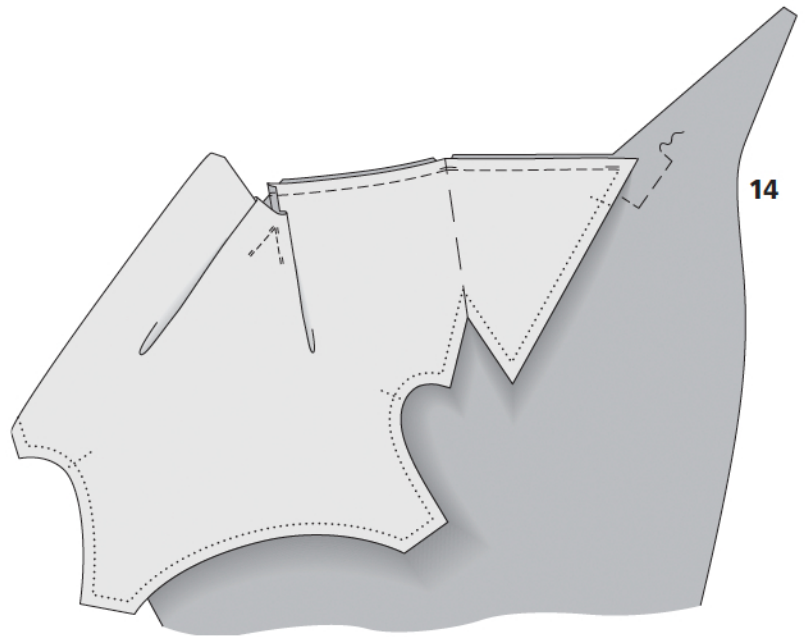


12

Sewing Continued...

Stitch (image 14). Clip seam allowance of skirt close to last stitch. Turn front up. Press seam allowances of horizontal seam open and neaten edges. Then turn skirt piece at corner (clip) to right fabric side and lay on the front, up to the point (seam number 5). Pin seam from seam mark (at seam number 6) to upper edge. Stitch (image 15). Leave seam open between seam mark 6 and the corner. The "tab" will be inserted here later (see also illus. 10). Press seam allowances toward front (this will be easiest on a sleeve ironing board). Unfold skirt piece again. Then fold front on fold line, wrong side facing in. Baste next to fold edge, from the top to approx. 5 cm (2 ins) below skirt attachment seam. At the top, baste angled edges of front together. Then pin and stitch these basted edges to side seam edges, as far as seam mark (image 16).

Remove pins from "tab" (see illus. 10 and 11) and gather the edge along the matching basting, to a width of 3 cm (1 1/4 ins). Knot threads securely. Push fabric of front and skirt front together tightly, from fold edge, and hold in place with a few straight pins, if necessary (image 17).



Sewing Continued...

Fold "tab" on fold line. Slide gathered end through opening in seam (see also illus. 15) to inside of dress and sew to seam allowances. Sew tab to right side of dress, at placement I with a few invisible stitches by hand.

Side seams and shoulder seams:

Lay front on back, right sides facing. Pin side seams and shoulder seams. Stitch seams. Press seam allowances open and neaten edges of allowances.

Neck edge:

Stitch shoulder seams of facings. Press seam allowances open. Neaten inside facing edges. Pin facing to neck edge, right sides together. Turn back facing edges to outside, approx. 5 mm (3/16 in) before marked seam line, and pin to neck edge. On back, turn allowances of slit edges (with zip) to outside and pin to upper edge, over facing (image 18). Stitch along neck edge. Trim seam allowances. Turn allowances at slit edges to inside. Turn facings up and stitch to seam allowances, close to attachment seam, as close to facing end as possible. Turn facing to inside. Press. Sew facing to zip tapes.

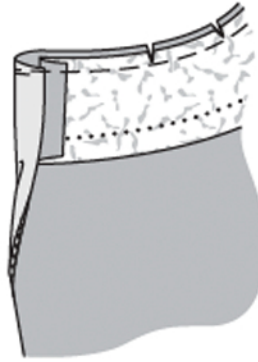
Sleeves:

To ease sleeve caps, stitch two closely spaced lines of machine basting on each side of marked seam line, from • to •. Do not yet pull bobbin threads. Fold sleeves lengthwise, right side facing in. Pin sleeve seams. Stitch. Press seam allowances open and neaten edges of allowances. Neaten edges of hem allowances. Press hem allowances to inside and stitch loosely in place by hand.

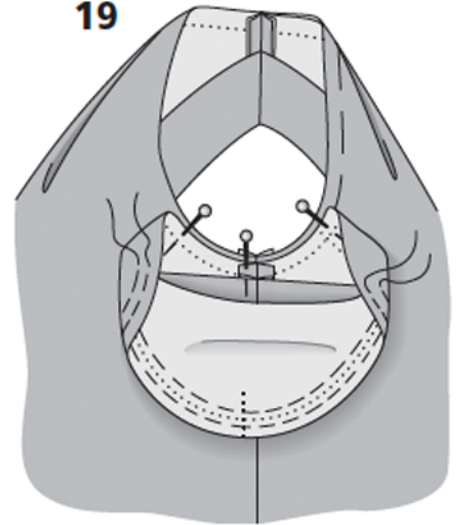
Setting in sleeves:

First pin each sleeve to underarm curve, right sides facing, matching sleeve seam and side seam and matching seam marks 10 on sleeve and front (image 19). Then pin seam mark on sleeve cap to shoulder seam. Ease fabric of sleeve cap along machine basting until sleeve matches armhole edge. Pin remainder of sleeve cap in place, distributing eased fullness evenly so that no tucks are formed. Working from sleeve side, baste sleeve to armhole edge, and

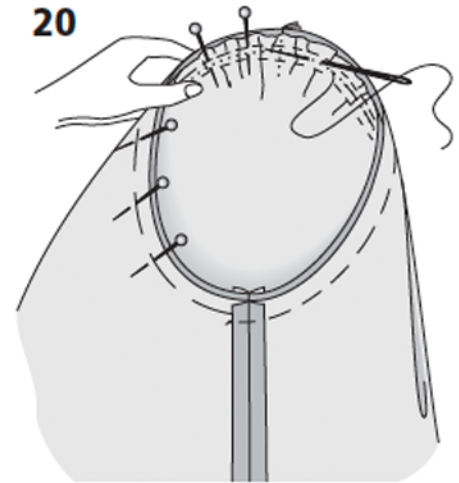
18



19



20



and stitch (image 20). Trim seam allowances to 1 cm (3/8 in) wide and neaten edges together. Turn seam allowances in area of sleeve cap toward sleeve.

Hem:

Press hem allowance to inside and stitch in place loosely by hand.