

### 102 Jacket

Burda sizes 36, 38, 40, 42, 44

Back length approx. 63 cm (25 ins)

### Materials

Lurex novelty fabric,  
width: 140 cm (55 ins)  
length: 1.50 – 1.50 – 1.50 – 1.75 – 1.75 m  
(1 3/4 – 1 3/4 – 1 3/4 – 2 – 2 yds).

Duchesse, as contrasting fabric,  
width: 150 cm (59 ins)  
length: 0.50 – 0.50 – 0.55 – 0.55 – 0.55 m  
(5/8 – 5/8 – 3/4 – 3/4 – 3/4 yd).

Lining,  
width: 140 cm (55 ins)  
length: 1.40 m (1 5/8 yds) for all sizes.

Interfacing.

Vilene Bias Tape/ stay tape.

1 large fabric-covered button, 10 small fabric-covered buttons (sleeves) and 3 large sew-on snap fasteners.

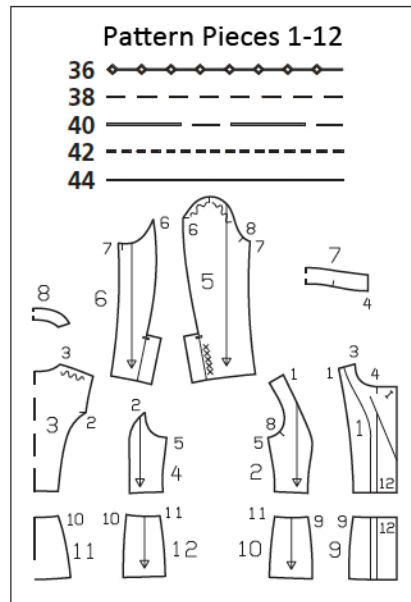
Shoulder pads.

Recommended fabrics: Lightweight jacket fabrics with some body.

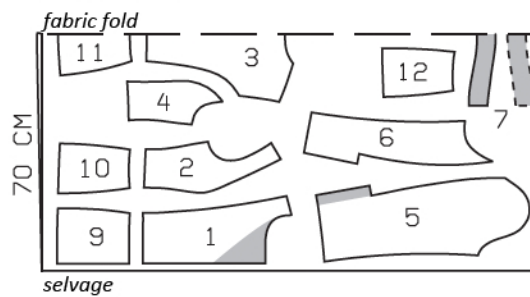
### Preparations

Print the pattern out on letter or A4 sized paper. It is **very important** to not scale or fit any of the pages, you must print the document in **actual size**. Your pattern will print on multiple pages, which you will then tile together. Arrange the sheets on a large, hard and flat surface matching up the numbers and letters (i.e. 6A to 6A). Cut or fold one of the sides and match the edge to it's corresponding side. Then, tape down in place so paper is secure.

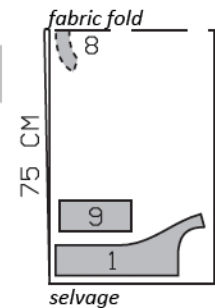
Trace the pattern pieces from the pattern sheet following the lines and markings for the correct size and the correct style (102). This pattern also includes pattern pieces, lines and markings for style 101, 103 & 104 that should be ignored. Trace the facings from pieces 1 and 9 as separate pattern pieces, also tracing the buttonhole.



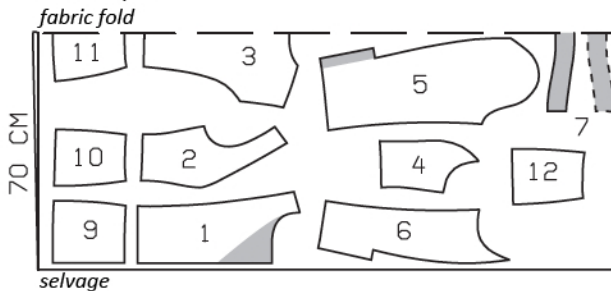
Lurex, 140cm wide  
Sizes 36-40



Duchesse, 150cm wide  
Sizes 36-44



Size 42, 44



Cut from a double layer of fabric, right side facing in.

The buttonhole on piece 1 is marked for size 36. for the other sizes, remark the buttonhole according to the size lines. The button markings on piece 5 are for size 36. For the other sizes, move the markings according to the size lines.

**burda style magazine patterns do not have seam allowance included.**

Seam and hem allowance to be added:

Seams and edges 1.5 cm (5/8 in), hem and sleeve hems 4 cm (1 5/8 ins), lining 1.5 cm (5/8 in).

## Cutting Out

### Novelty fabric:

- 1 centre front 2x
- 2 side front 2x
- 3 centre back, on a fold 1x
- 4 side back 2x
- 5 upper sleeve 2x
- 6 under sleeve 2x
- 7 collar, on a fold 2x
- 9 centre front peplum piece 2x
- 10 side front peplum piece 2x
- 11 centre back peplum piece,  
on a fold 1x
- 12 side back peplum piece 2x

### Duchesse:

- 1 front facing – upper piece 2x
- 9 front facing – lower piece 2x
- 8 back facing, on a fold 1x

Lining: pieces 1 and 9 minus width of facing; piece 3 minus neck facing and with an ease pleat of approx. 2 cm (3/4 in) at centre back; pieces 5 and 6 without vent allowances; and also pieces 2, 4, 10, 11, and 12.

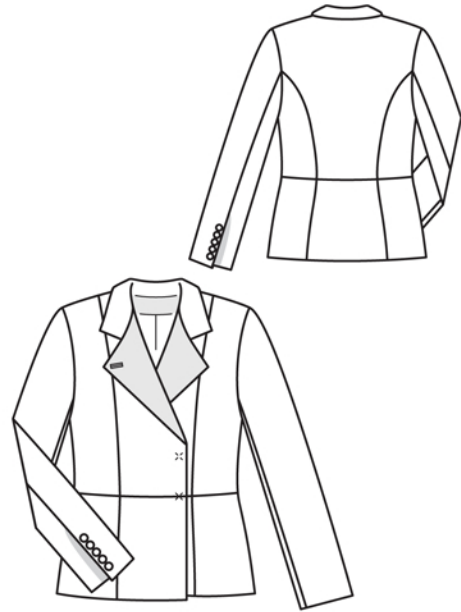
Interfacing: See shaded area on pattern layout. Also interface hem allowances. Iron Vilene Bias Tape/ stay tape to wrong side of armhole edges.

## Sewing

Stitch front and back section seams, side seams, and shoulder seams of upper jacket. Stitch section seams and side seams of peplum. Press seam allowances open. Stitch peplum to upper jacket. Press seam allowances open.

Stitch shoulder seams of facing. Stitch lower facing pieces in place (seam number 12). Press seam allowances open.

Work buttonhole for large button in right front facing. Finished buttonhole should be 2 mm (a scant 1/8 in) longer than diameter of button. For the binding, cut a strip of fabric on the bias – approx. 3 cm (1 1/4 ins) longer than finished buttonhole and 4 cm (1 5/8 ins) wide. Pin fabric strip over marked buttonhole, right sides facing. Work from wrong fabric side to stitch a rectangle, 6 – 8 mm (approx. 1/4 in wide) from all sides of marked buttonhole. Slash between lines of stitching and clip diagonally into corners.



Pull fabric strip to inside. Press seam allowances open. At ends of buttonhole, smooth fabric strip and baste in place, not basting wider than the rectangular opening for the buttonhole. Turn both long edges of fabric strip into opening, to make the binding, and fold so that fold edges of binding meet exactly in centre of buttonhole. Baste bindings together with long, diagonal stitches. Press. Work from right fabric side to stitch exactly along seam with small back stitches by hand or stitch by machine, thereby catching binding. Remove basting. Stitch small triangles at buttonhole ends to binding. Trim edges of binding to approx. 7 mm (1/4 in) from buttonhole edges.

Notched collar: Pin facing to coat, right sides together. Build a little extra fullness into corners of lapels. Stitch facing in place, along front edges and edges of lapels, up to seam marks. Leave facing lying right sides together with coat for now. Stitch collar pieces together along outer edges, building a little extra fullness into top collar, beginning and ending stitching on narrow edges, exactly at seam line on attachment edge. Turn collar right side out. Lay collar between coat and facing. Stitch under collar to neck edge of coat and stitch top collar to facing. Press seam allowances of collar attachment seams open. Turn facing to inside. Pin collar attachment seams together exactly. Turn back facing up and stitch seam allowances together, close to collar attachment seam. Turn facing down.

Mark ends of buttonhole with straight pins. Working from back side, cut buttonhole open then clip diagonally up and down, approx. 5 mm (3/16 in) long, at the ends. Turn cut edges under and sew to binding, with small stitches by hand.

At hem edge, unfold facings. Press hem allowance to inside, then turn down again.

Two-piece sleeve with sleeve vent: Stitch front sleeve seams (seam number 7). Press seam allowances open. On each upper sleeve, turn vent facing and hem allowance to outside and stitch corner at an angle (mitred corner). Trim allowances of mitring seam to 5 mm (3/16 in) wide and press

## Sewing Continued...

open. On each under sleeve, stitch hem allowance to long edge of underlap, right sides together. Clip seam allowance of underlap close to last stitch. Turn hem allowances and vent facings to inside. Press edges of hem and vents. Stitch back sleeve seams up to slit marks. Clip seam allowances into corners and press open. Lay vent facing of upper sleeve on vent underlap and stitch inside edges together, from upper edges to clip. Sew sleeve hem allowances in place by hand. Sew buttons to sleeves, catching underlaps.

Set in sleeves, easing sleeve caps. Sew shoulder pads in place.

**Sew lining:** On back lining piece, stitch ease pleat at top and bottom, each approx. 5 cm (2 ins) long, and baste in between. Press pleat to one side. Set in sleeve linings.

**Line coat, hem:** Stitch lining right sides together with inside facing edge. Lay lining inside coat, with wrong sides together, pulling linings into sleeves. Turn hem allowance to inside and sew in place by hand. Turn lining edge under along hem edge, and press fold lightly. Slide upward in a shallow curve and pin to hem allowance. Sew facings and lining in place. Lay extra length of lining down and press lightly. Turn edges of sleeve linings under and sew to hem allowances. Lay extra length of lining down and press.

**Cover snap fastener halves with lining fabric.** Sew two upper snap halves to inside of right front edge, with bottom snap at peplum attachment seam and second snap 8.5 cm (3 3/8 ins) above this seam. Space snaps 2 cm (3/4 in) from front edge. When sewing snaps in place, take even stitches and exit needle on right side of fabric. Lay right front on left front, matching centre fronts. Sew lower snap halves to left front, to match upper snap halves. Also fasten lapel fold of left front edge to right facing, with a snap. Sew large button (lapel buttonhole) to left front.